

1. Insulation — Any UL Class A, B or C Ceiling System (CFRS) or Plaster/Roof Coating (PFR/RC) acceptable for use over non-fire rated gypsum wallboard. Flash rating shall be 30 minutes. Insulation shall be placed on the exterior side of the wall. Nails spaced 24" on center. Insulation shall be placed on the exterior side of the wall. Nails spaced 24" on center.
2. Insulation — Placed on parallel stud wood framing, spaced a maximum of 24" on center. Insulation shall be placed on the exterior side of the wall. Nails spaced 24" on center. Insulation shall be placed on the exterior side of the wall. Nails spaced 24" on center.

**5 DETAIL: UL# P522**  
SCALE: N.T.S.

partition bearing the UL Classification Marking as its Surface Burning Characteristics and Fire Resistance, having a non-density of 20 pcf. As an option, the insulation may be left in the concealed space, draped over the ceiling channel gypsum wallboard ceiling membrane when incident channels and gypsum wallboard sheathing is installed as specified in Items 2 and 7. The finished rating may only be listed when the insulation is removed to the ceiling.

3. Loose Fill Material — As an alternate to Item 2 — Any thickness of loose fill material bearing the UL Classification Marking for Surface Burning Characteristics, having a non-density of 20 pcf, fitted in the concealed space, draped over the ceiling channel gypsum wallboard ceiling membrane when incident channels and gypsum wallboard sheathing is installed as specified in Items 2 and 7. The finished rating may only be listed when the insulation is removed to the ceiling.

4. Air Space — Any UL Class A or B Ceiling System (CFRS) or Plaster/Roof Coating (PFR/RC) acceptable for use over non-fire rated gypsum wallboard. Flash rating shall be 30 minutes. Insulation shall be placed on the exterior side of the wall. Nails spaced 24" on center.

5. Gypsum Board — One layer of non-fire rated gypsum wallboard installed in accordance with the instructions provided by the manufacturer. Gypsum Board shall be installed in accordance with the instructions provided by the manufacturer. Gypsum Board shall be installed in accordance with the instructions provided by the manufacturer. Gypsum Board shall be installed in accordance with the instructions provided by the manufacturer.

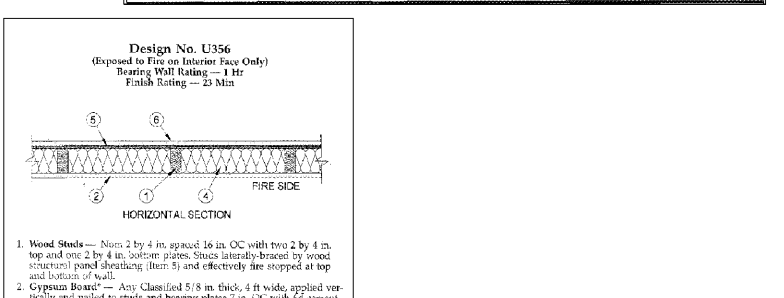
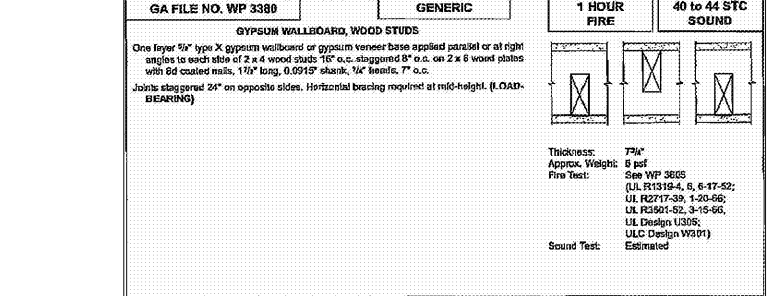
6. Resilient Channels — Installed in accordance with the manufacturer's instructions. Resilient Channels shall be installed in accordance with the manufacturer's instructions. Resilient Channels shall be installed in accordance with the manufacturer's instructions. Resilient Channels shall be installed in accordance with the manufacturer's instructions.

7. Ceiling Channels — Non-fire rated gypsum wallboard installed in accordance with the manufacturer's instructions. Ceiling Channels shall be installed in accordance with the manufacturer's instructions. Ceiling Channels shall be installed in accordance with the manufacturer's instructions. Ceiling Channels shall be installed in accordance with the manufacturer's instructions.

8. Flashing Systems — Non-fire rated gypsum wallboard installed in accordance with the manufacturer's instructions. Flashing Systems shall be installed in accordance with the manufacturer's instructions. Flashing Systems shall be installed in accordance with the manufacturer's instructions. Flashing Systems shall be installed in accordance with the manufacturer's instructions.

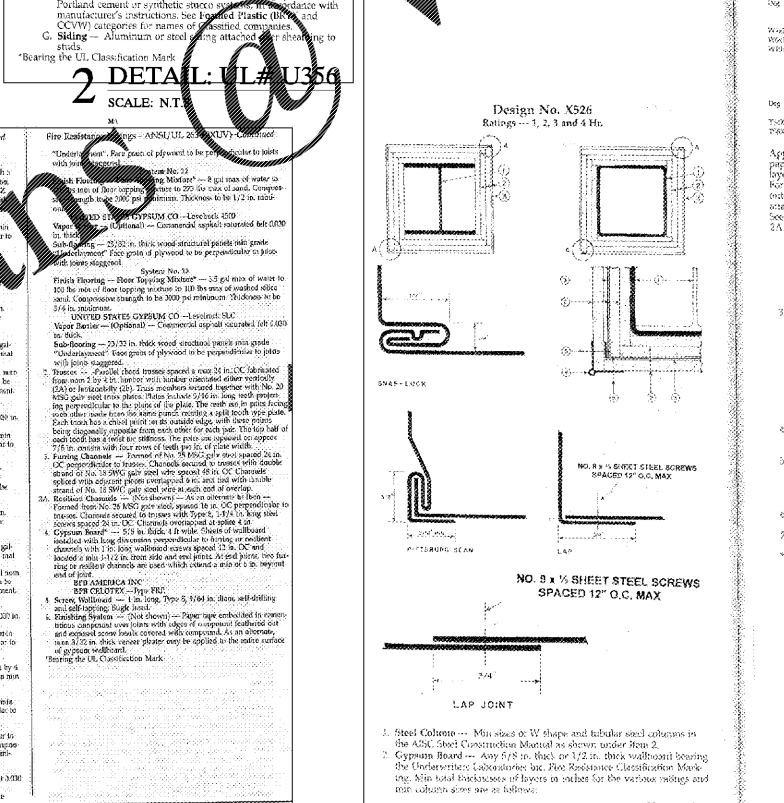
9. Gypsum Board — One layer of non-fire rated gypsum wallboard installed in accordance with the manufacturer's instructions. Gypsum Board shall be installed in accordance with the manufacturer's instructions. Gypsum Board shall be installed in accordance with the manufacturer's instructions. Gypsum Board shall be installed in accordance with the manufacturer's instructions.

10. Gypsum Board — One layer of non-fire rated gypsum wallboard installed in accordance with the manufacturer's instructions. Gypsum Board shall be installed in accordance with the manufacturer's instructions. Gypsum Board shall be installed in accordance with the manufacturer's instructions. Gypsum Board shall be installed in accordance with the manufacturer's instructions.

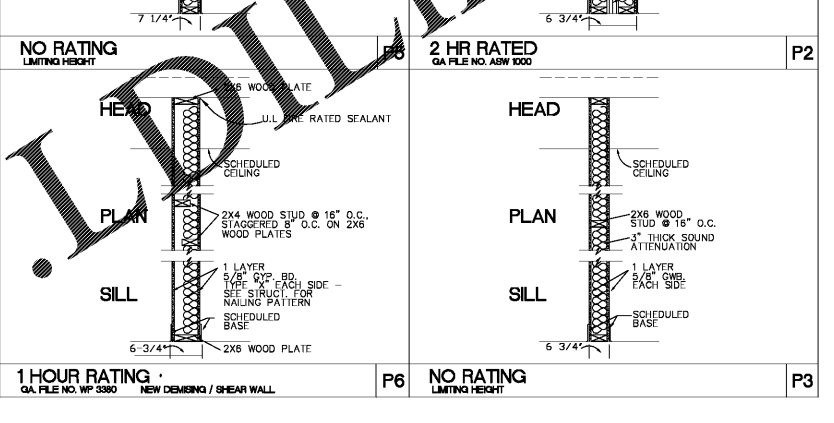
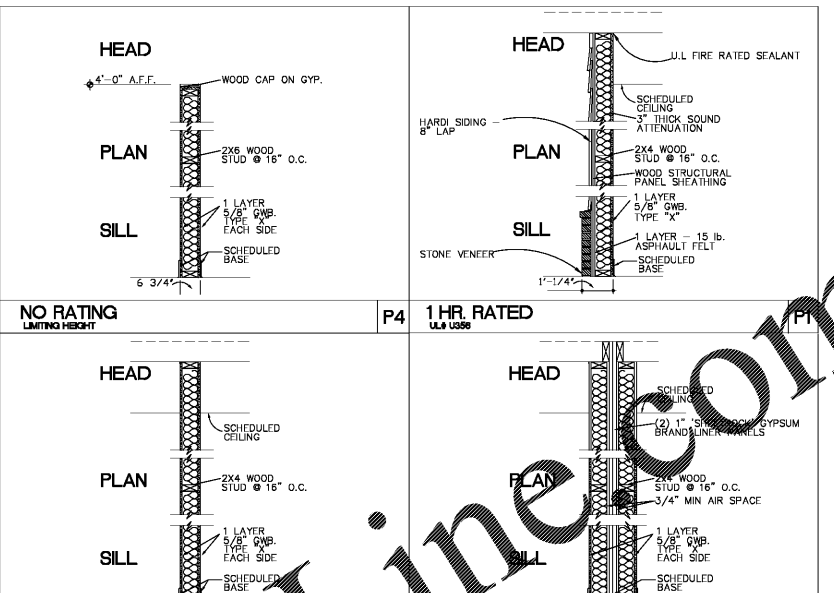


1. Wood Studs — Non-fire rated gypsum wallboard installed in accordance with the manufacturer's instructions. Wood Studs shall be installed in accordance with the manufacturer's instructions. Wood Studs shall be installed in accordance with the manufacturer's instructions. Wood Studs shall be installed in accordance with the manufacturer's instructions.
2. Gypsum Board — One layer of non-fire rated gypsum wallboard installed in accordance with the manufacturer's instructions. Gypsum Board shall be installed in accordance with the manufacturer's instructions. Gypsum Board shall be installed in accordance with the manufacturer's instructions. Gypsum Board shall be installed in accordance with the manufacturer's instructions.
3. Joints and Nailheads — (See Item 2) — Gypsum Board shall be installed in accordance with the manufacturer's instructions. Joints and Nailheads shall be installed in accordance with the manufacturer's instructions. Joints and Nailheads shall be installed in accordance with the manufacturer's instructions. Joints and Nailheads shall be installed in accordance with the manufacturer's instructions.
4. Exterior Insulation and Finish System (EIFS) — Non-fire rated gypsum wallboard installed in accordance with the manufacturer's instructions. EIFS shall be installed in accordance with the manufacturer's instructions. EIFS shall be installed in accordance with the manufacturer's instructions. EIFS shall be installed in accordance with the manufacturer's instructions.
5. Gypsum Board — One layer of non-fire rated gypsum wallboard installed in accordance with the manufacturer's instructions. Gypsum Board shall be installed in accordance with the manufacturer's instructions. Gypsum Board shall be installed in accordance with the manufacturer's instructions. Gypsum Board shall be installed in accordance with the manufacturer's instructions.
6. Exterior Insulation and Finish System (EIFS) — Non-fire rated gypsum wallboard installed in accordance with the manufacturer's instructions. EIFS shall be installed in accordance with the manufacturer's instructions. EIFS shall be installed in accordance with the manufacturer's instructions. EIFS shall be installed in accordance with the manufacturer's instructions.

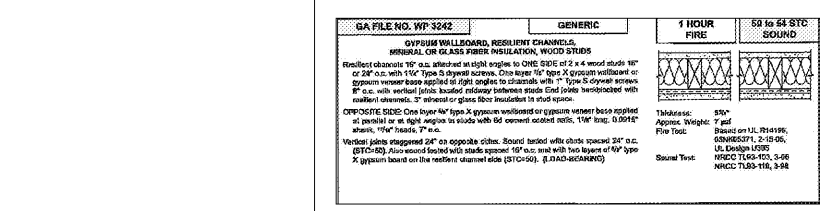
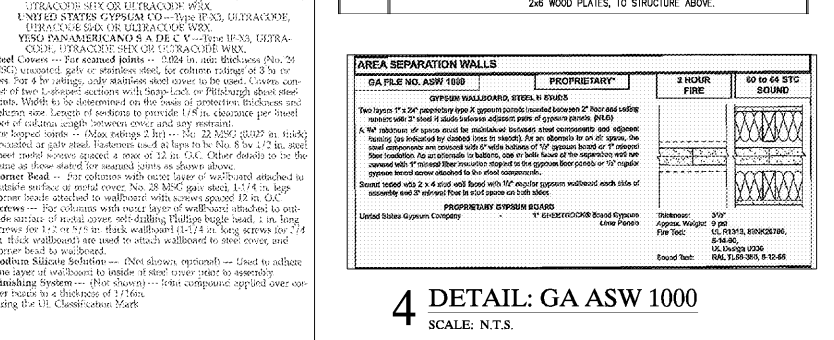
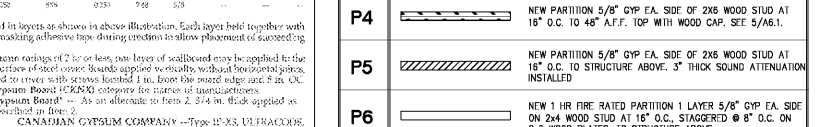
**2 DETAIL: UL# U356**  
SCALE: N.T.S.



**3 DETAIL: UL# X526**  
SCALE: N.T.S.



NO RATING LIMITING HEIGHT	P4 1 HR. RATED	P1
NO RATING LIMITING HEIGHT	1 HR. RATED	NO RATING LIMITING HEIGHT
NO RATING LIMITING HEIGHT	2 HR. RATED	P2
NO RATING LIMITING HEIGHT	NO RATING LIMITING HEIGHT	P3
NO RATING LIMITING HEIGHT	NO RATING LIMITING HEIGHT	P4
NO RATING LIMITING HEIGHT	NO RATING LIMITING HEIGHT	P5
NO RATING LIMITING HEIGHT	NO RATING LIMITING HEIGHT	P6



**7 DETAIL: GA WP 3242**  
SCALE: N.T.S.

**Pate Design Group, Inc.**  
Architecture / Interiors  
4168 Abbotts Bridge Road  
Duluth, Georgia 30097  
(p) 770.814.0885  
(f) 770.814.0888  
Kirby@patedesigngroup.com

**G-1 AND G-2**  
**WISTERIA RIDGE**  
**Will-O-War LLC**  
75 North Main Street  
Watkinsville, GA 30677

**Issue & Revisions:**

No.	Date	Description

**AREA SEPARATION WALLS**

GA FILE NO. ASW 1000	PROPRIETARY	2 HOUR FIRE	60 to 64 STC SOUND

**4 DETAIL: GA ASW 1000**  
SCALE: N.T.S.

**GA FILE NO. WP 3242**  
GENERIC  
1 HOUR FIRE  
60 to 64 STC SOUND

**GA FILE NO. WP 3242**  
GENERIC  
1 HOUR FIRE  
60 to 64 STC SOUND

**GA FILE NO. WP 3242**  
GENERIC  
1 HOUR FIRE  
60 to 64 STC SOUND

**7 DETAIL: GA WP 3242**  
SCALE: N.T.S.

**A6.1**

THIS DRAWING IS THE PROPERTY OF PATE DESIGN GROUP, INC. AND IS TO BE USED ONLY FOR THE PROJECT AND SITE SPECIFICALLY IDENTIFIED HEREIN AND IS NOT TO BE USED IN ANY OTHER PROJECT. IT IS TO BE RETURNED UPON REQUEST.