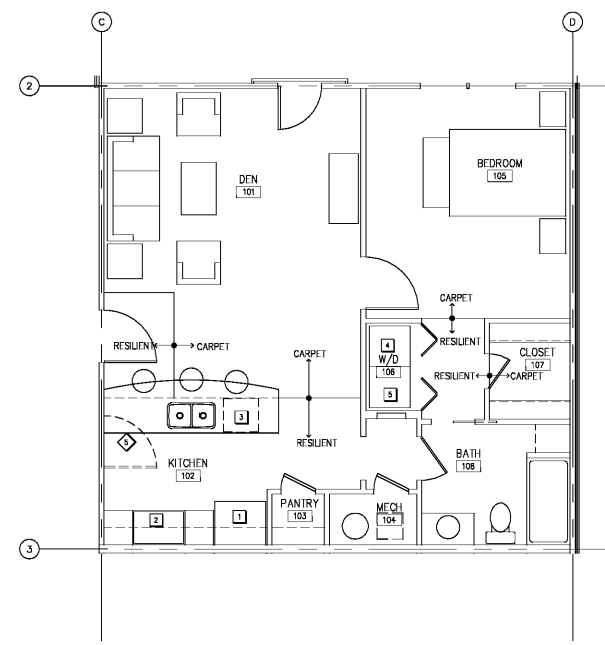
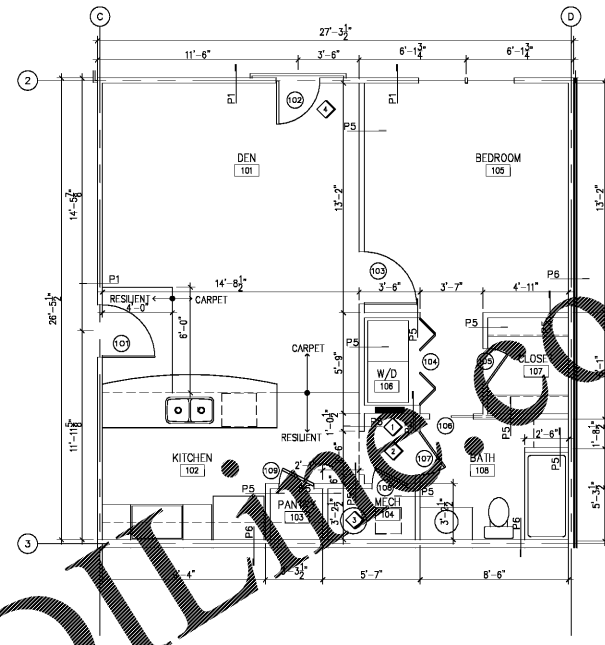




Pate Design Group, Inc.
 Architecture / Interiors
 4168 Abbotts Bridge Road
 Duluth, Georgia 30097
 (p) 770.814.0885
 (f) 770.814.0888
 Kirby@patedesigngroup.com



2 FURNITURE PLAN: 1 BR Unit
 SCALE: 1/4"=1'-0"



1 FLOOR PLAN: 1 BR Unit
 SCALE: 1/4"=1'-0"

CONSTRUCTION NOTES:

- ◆ ELECTRICAL PANEL COORDINATE WITH ELECTRICAL DWGS.
- ◆ GYP. SOFFIT ABOVE @ 8'-0" A.F.F.
- ◆ WATER HEATER AND A.H.U. COORDINATE WITH MECHANICAL/PLUMBING DWGS.
- ◆ JULIETTE DOOR TO BE EXCHANGED WITH TYPE 'A' WINDOW IN GRADE-LEVEL UNITS.
- ◆ ALTERNATE DOOR LOCATION - COORDINATE WITH OVERALL FLOOR PLANS

APPLIANCE SCHEDULE:

- 1 GENERAL ELECTRIC, G18480, 18 CUB.FT. TOP-FREEZER REFRIGERATOR WITH ICEMAKER, 'CLEANSTEEL' FINISH
- 2 GENERAL ELECTRIC, M30800, 'SPACEMAKER' 27" DROP-IN ELECTRIC RANGE, FINISH SELECTED BY OWNER
- 3 GENERAL ELECTRIC, G5M1800A, 18" BUILT-IN DISHWASHER, FINISH SELECTED BY OWNER
- 4 (OPTIONAL) GENERAL ELECTRIC, D6KR4630D, 6.0 CUB.FT. CAPACITY ELECTRIC DRYER
- 5 (OPTIONAL) GENERAL ELECTRIC, W6SR20800, 3.2 CUB.FT. CAPACITY WASHER

GENERAL NOTES:

- 1) GENERAL CONTRACTOR (G.C.) SHALL SURVEY JOB SITE PRIOR TO COMMENCING WORK AND SHALL VERIFY ALL DIMENSIONS AND NOTE ALL CONDITIONS WHICH WILL AFFECT OR BE AFFECTED BY WORK ON THIS PROJECT; AND SHALL CORRECT OR DISCREPANCIES SHALL BE REPORTED IMMEDIATELY TO THE ARCHITECT.
- 2) ALL WORK SHALL CONFORM TO THE REQUIREMENTS OF THE APPLICABLE CODES, LAWS, RULES AND REGULATIONS OF ALL CONSTITUTED PUBLIC AUTHORITIES HAVING JURISDICTION.
- 3) CONTRACTOR SHALL BE RESPONSIBLE FOR A COMPLETE BUILDING WITH INTERIOR SPACES FINISHED TO A RESIDENTIAL STANDARD.
- 4) CONTRACTOR IS TO NOTIFY OWNER AND GOVERNING AUTHORITIES PRIOR TO DISRUPTION OF UTILITY SERVICES, INCLUDING BUT NOT LIMITED TO WATER, ELECTRICITY AND GAS. NOTICES SHALL BE SUBMITTED IN WRITING TO BE RECEIVED MINIMUM 24 HOURS IN ADVANCE TO UTILITY OUTAGE.
- 5) OWNER IS TO BE CONTACTED FOR SCHEDULING AND COORDINATING WITH CIVIL-RELATED WORK.
- 6) ALL INTERIOR FINISHES ARE TO BE AS NOTED OTHERWISE.
- 7) SIGNS ARE NOT APPROVED WITHIN THE SCOPE OF THIS BUILDING PERMIT. A SEPARATE SIGN LOCATION PERMIT IS REQUIRED FOR EACH SIGN.
- 8) CONTRACTOR SHALL PERMANENTLY IDENTIFY ALL RAISED WALLS AND SHUT ENCLOSURES BY INSTALLING A METAL SIGN STATING "1 HR. FIRE RATED SMOKE BARRIER - PROTECT ALL OPENINGS". IDENTIFICATIONS SHALL BE SPACED NO MORE THAN 12" ON CENTER. 2" LETTER SIZE SHALL BE ON A CONTRASTING BACKGROUND (SEC 7035 OF THE 2002 GEORGIA STATE AMENDMENTS).
- 9) INSULATION SHALL HAVE A FLAME SPREAD INDEX OF NOT MORE THAN 25 AND SMOKE-DEVELOPED INDEX OF NOT MORE THAN 450 AS DETERMINED BY ASTM E-84.
- 10) DRYWALL TO BE FINISHED TO USG LEVEL 4 UNLESS NOTED OTHERWISE.
- 11) SEE SHEET A6.1 FOR PARTITION DETAILS AND NOTES.
- 12) SEE SHEET A7.1 FOR DOOR AND WINDOW DETAILS AND SCHEDULES.
- 13) SEE SHEETS A5.1 AND A5.2 FOR TYPICAL UNIT PLANS, REFLECTED CEILING PLANS, AND SCHEDULES.
- PI INDICATES PARTITION TYPE. SEE A6.1 FOR DETAILS.
- 19 INDICATES DOOR NUMBERS. SEE SCHEDULE AND DETAILS ON SHEET A7.1

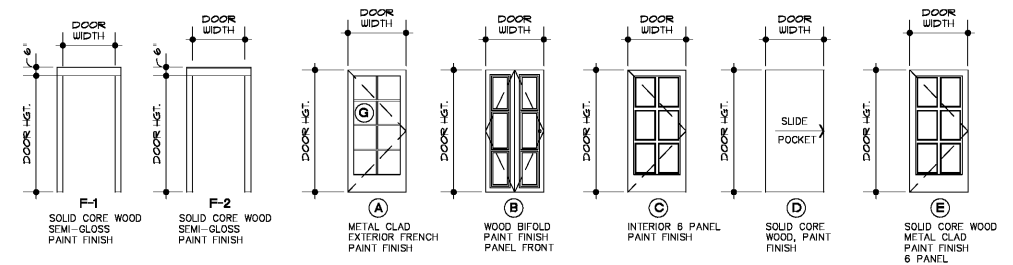
SCHEDULE OF INTERIOR FINISHES - TYPICAL UNIT PLAN

ROOM NUMBER	SPACE	FLOOR	BASE	WALLS				CEILING		DOOR	FRAME	REMARKS
				NORTH	EAST	SOUTH	WEST	MATERIAL	HEIGHT			
101	DEN	C1	PT	PT	PT	PT	PT	GYP	9'-0"	WD/PT	HM/PT	
102	KITCHEN	VINYL	PT	PT	PT	PT	PT	GYP	9'-0"	WD/PT	HM/PT	
103	PANTRY	VINYL	PT	PT	PT	PT	PT	GYP	9'-0"	WD/PT	HM/PT	
104	MECHANICAL	VINYL	WD/PT	PT	PT	PT	PT	GYP	8'-0"	WD/PT	HM/PT	
105	BEDROOM	C1	PT	PT	PT	PT	PT	GYP	9'-0"	WD/PT	HM/PT	
106	WASHER/DRYER	VINYL	WD/PT	PT	PT	PT	PT	GYP	9'-0"	WD/PT	HM/PT	
107	CLOSET	C1	PT	PT	PT	PT	PT	GYP	8'-0"	WD/PT	HM/PT	
108	BATH	VINYL	WD/PT	PT	PT	PT	PT	GYP	9'-0"	WD/PT	HM/PT	

LEGEND		NOTES	
TBD = TO BE DETERMINED	VCT = VINYL COMPOSITE TILE	1.) VERIFY COLOR SELECTION WITH OWNER PRIOR TO PURCHASE/ORDER OF MATERIALS.	
VCB = VINYL COVE BASE	C1 = CARPET 1	2.) ARCHITECT TO APPROVE SUBMITTALS OF ALL FINISH MATERIALS PRIOR TO ORDER.	
VWC = VINYL WALL COVERING	AL/GL = ALUMINUM / GLAZING	3.) ALL FINISH MATERIALS TO BE INSTALLED IN ACCORDANCE WITH MANUFACTURER'S PRINTED INSTRUCTIONS.	
HM = HOLLOW METAL	HDWD = HARDWOOD FLOORING	4.) PROVIDE PROPER TRANSITION STRIPS BETWEEN ALL FLOORING MATERIALS. ARCHITECT TO APPROVE.	
PT = PAINT	WD/PT = WOOD / PAINT	5.) PAINT TO BE BENJAMIN MOORE SCRUBBABLE FLAT.	
GWB = GYPSUM BOARD	VINYL = RESILIENT VINYL FLOORING	6.) FINISH SCHEDULE FOR TYPICAL UNIT PLAN. APPLY TO ALL UNITS.	
ACT = ACCOUSTICAL CEILING TILE			

DOOR SCHEDULE - TYPICAL UNIT PLAN

MARK	ROOM NAME	ROOM NO	DOOR and WINDOW TYPES			FRAME TYPES			DETAILS			SILL DETAIL	HDWR SET	GLAZ. TYPE	REMARKS	
			TYPE	MAT'L	LABEL	NO. REQUIRED/ SIZE	TYPE	MAT'L	LABEL	HEAD	JAMB					
	KITCHEN	102	E	HM	20 MIN				3'-0" x 6'-8" x 1-3/4"	F-2	HM	20 MIN	H-2	J-2	S-2	ENTRY/PEEPHOLE/LOOK/DB
	DEN	101	A	WD					PR 3'-0" x 6'-8" x 1-3/4"	F-2	HM		H-2	J-2	S-2	EXT SLIDER
	BEDROOM	105	C	WD					3'-0" x 6'-8" x 1-3/4"	F-1	HM		H-1	J-1	S-1	PRIVACY LOCK
	WASHER/DRYER	106	B	WD					PR 2'-0" x 6'-8" x 1-3/4"	F-1	HM		H-1	J-1	S-1	BIFOLD DOOR
	CLOSET	107	C	WD					2'-10" x 6'-8" x 1-3/4"	F-1	HM		H-1	J-1	S-1	
	BATH	108	D	WD					2'-10" x 6'-8" x 1-3/4"	F-1	HM		H-1	J-1	S-1	POCKET DR/PRIVACY LOCK
	BATH	108	C	WD					2'-10" x 6'-8" x 1-3/4"	F-1	HM		H-1	J-1	S-1	PRIVACY LOCK
	MECHANICAL	104	C	WD					2'-6" x 6'-8" x 1-3/4"	F-1	HM		H-1	J-1	S-1	
	PANTRY	103	C	WD					2'-0" x 6'-8" x 1-3/4"	F-1	HM		H-1	J-1	S-1	



DOOR NOTES:

- 1.) ALL INTERIOR TENANT DOORS TO BE PAINT GRADE.
- 2.) ALL DOORS TO BE PREHUNG WOOD FRAME.
- 3.) DOOR SCHEDULE FOR TYPICAL UNIT. APPLY TO ALL UNITS.
- 4.) ALL EXTERIOR DOORS TO HAVE 4" CASING W/ 6" HEAD.

ⓐ CLEAR GLASS, FULLY TEMPERED IN ACCORDANCE WITH ANSI Z97.1

Order Plans @

G-1 AND G-2
WISTERIA RIDGE
 Will-O-War LLC
 75 North Main Street
 Watkinsville, GA 30677

Issue & Revisions:

No.	Date	Description
1	04.01.19	CLARIFICATION

ENLARGED PLANS - 1 BR UNIT

Drawn **MWB**
 Checked **KEP**
 Contract No. 07-03
 Scale AS NOTED

A5.2

RELEASED FOR CONSTRUCTION

THIS DRAWING IS THE PROPERTY OF PATE DESIGN GROUP AND IS NOT TO BE COPIED IN WHOLE OR IN PART. IT IS TO BE USED FOR THE PROJECT AND SITE SPECIFICALLY IDENTIFIED HEREIN AND IS NOT TO BE USED IN ANY OTHER PROJECT. IT IS TO BE RETURNED UPON REQUEST.