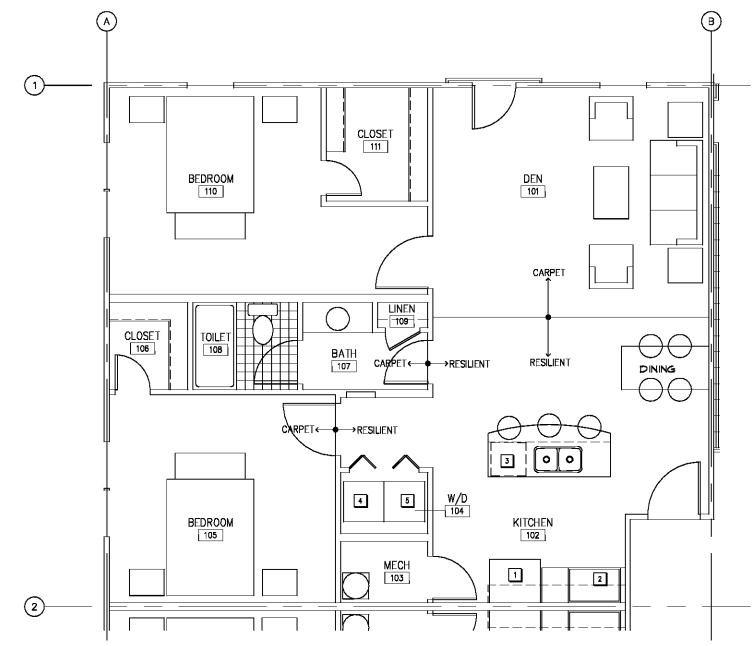
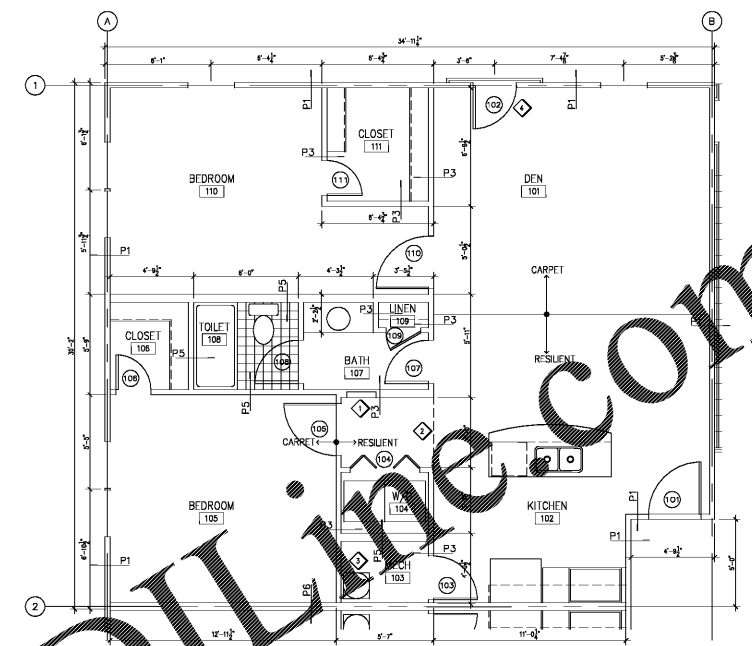




Pate Design Group, Inc.
 Architecture / Interiors
 4168 Abbotts Bridge Road
 Duluth, Georgia 30097
 (p) 770.814.0885
 (f) 770.814.0888
 Kirby@patedesigngroup.com



2 FURNITURE PLAN: 2 BR Unit
 SCALE: 1/4"=1'-0"
 N



FLOOR PLAN: 2 BR Unit
 SCALE: 1/4"=1'-0"
 N

- CONSTRUCTION NOTES:**
- ◇ ELECTRICAL PANEL COORDINATE WITH ELECTRICAL DWGS.
 - ◇ GYP. SOFFIT ABOVE @ 8'-0" A.F.F.
 - ◇ WATER HEATER AND A.H.U. COORDINATE WITH MECHANICAL/PLUMBING DWGS.
 - ◇ JULIETTE DOOR TO BE EXCHANGED WITH TYPE 'B' WINDOW IN GRADE-LEVEL UNITS.

- APPLIANCE SCHEDULE:**
- 1 GENERAL ELECTRIC, GILIBRUP, 18 CU.F.T. TOP-FREEZER REFRIGERATOR WITH ICE/MAKER, 'QUANSTEEL' FINISH
 - 2 GENERAL ELECTRIC, OSW8800, 'SPACEMAKER' 27" DROP-IN ELECTRIC RANGE, FINISH SELECTED BY OWNER
 - 3 GENERAL ELECTRIC, OSW1800A, 18" BUILT-IN DISHWASHER, FINISH SELECTED BY OWNER
 - 4 (OPTIONAL) GENERAL ELECTRIC, OBR463ED, 6.0 CU.F.T. CAPACITY ELECTRIC DRYER
 - 5 (OPTIONAL) GENERAL ELECTRIC, WDR2060D, 3.2 CU.F.T. CAPACITY WASHER

- GENERAL NOTES:**
- 1) GENERAL CONTRACTOR (G.C.) SHALL SURVEY JOB SITE PRIOR TO COMMENCING WORK AND SHALL VERIFY DIMENSIONS AND NOTE ALL CONDITIONS WHICH WILL AFFECT OR BE AFFECTED BY WORK ON THIS PROJECT. ANY DISCREPANCIES SHALL BE REPORTED IMMEDIATELY TO THE ARCHITECT.
 - 2) ALL WORK SHALL CONFORM TO THE REQUIREMENTS OF THE APPLICABLE CODES, LAWS, RULES AND REGULATIONS OF ALL CONSTITUTED PUBLIC AUTHORITIES HAVING JURISDICTION.
 - 3) CONTRACTOR SHALL BE RESPONSIBLE FOR A COMPLETE BUILDING WITH ALL ROOM SPACES FINISHED TO A RESIDENTIAL STANDARD.
 - 4) CONTRACTOR IS TO NOTIFY OWNER AND ALL NECESSARY AUTHORITIES PRIOR TO INTERRUPTION OF UTILITY SERVICES, INCLUDING BUT NOT LIMITED TO WATER, ELECTRICITY AND GAS. NOTIFICATION IS TO BE A MINIMUM 24 HOURS IN ADVANCE TO UTILITY OUTAGE.
 - 5) OWNER IS TO BE CONTACTED FOR SCOPE AND SEQUENCE OF WORK IN COORDINATING WITH CIVIL-RELATED WORK.
 - 6) ALL INTERIOR DIMENSIONS ARE TO FACE UNLESS NOTED OTHERWISE.
 - 7) SIGNS ARE NOT APPROVED WITH THE SIGNING OF THIS BUILDING PERMIT. A SEPARATE SIGN LOCATION PERMIT IS REQUIRED FOR EACH SIGN.
 - 8) CONTRACTOR SHALL PERMANENTLY IDENTIFY ALL RATED WALLS AND SHAFT ENCLOSURES BY INSTALLING A METAL SIGN STATING "FIRE AND SMOKE RESISTANT - PROTECT ALL OPENINGS". IDENTIFICATIONS SHALL BE SPACED NO MORE THAN 12" ON CENTER. 2" MIN. LETTER SIZE SHALL BE ON A CONTRASTING BACKGROUND (SEC 7035 OF THE 2002 GEORGIA STATE ADMINISTRATIVE CODE).
 - 9) INSULATION SHALL HAVE A FLAME SPREAD INDEX OF NOT MORE THAN 25 AND SMOKE-DEVELOPED INDEX OF NOT MORE THAN 450 AS DETERMINED BY ASMT E-84.
 - 10) DRYWALL TO BE FINISHED TO USG LEVEL 4 UNLESS NOTED OTHERWISE.
 - 11) SEE SHEET A6.1 FOR PARTITION DETAILS AND NOTES.
 - 12) SEE SHEET A7.1 FOR DOOR AND WINDOW DETAILS AND SCHEDULES.
 - 13) SEE SHEETS A5.1 AND A5.2 FOR TYPICAL UNIT PLANS, REFLECTED CEILING PLANS, AND SCHEDULES.
 - P1 INDICATES PARTITION TYPE. SEE A6.1 FOR DETAILS.
 - 14 INDICATES DOOR NUMBERS. SEE SCHEDULE AND DETAILS ON SHEET A7.1

SCHEDULE OF INTERIOR FINISHES - TYPICAL UNIT PLAN

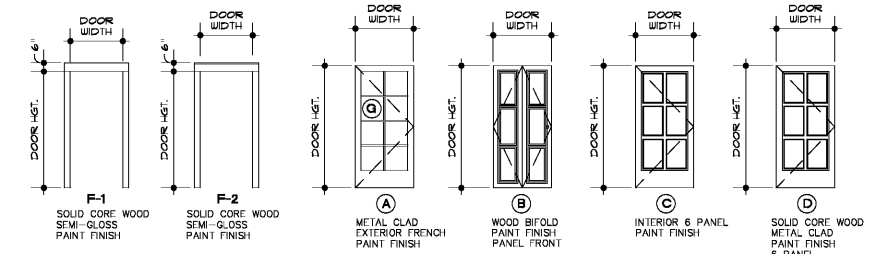
ROOM NUMBER	SPACE	FLOOR	BASE	WALLS				CEILING	DOOR	FRAME	REMARKS
				NORTH	EAST	SOUTH	WEST				
101	DEN	PT	PT	P1	P1	P1	P1	GYP	9'-0"	WD/PT	HM/PT
102	KITCHEN	PT	PT	P1	P1	P1	P1	GYP	9'-0"	WD/PT	HM/PT
103	MECHANICAL	VIN	WD/PT	P1	P1	P1	P1	GYP	8'-0"	WD/PT	HM/PT
104	WASHER/DRYER	VINYL	WC/PT	P1	P1	P1	P1	GYP	8'-0"	WD/PT	HM/PT
105	BEDROOM	C1	WD/PT	P1	P1	P1	P1	GYP	9'-0"	WD/PT	HM/PT
106	CLOSET	C1	WD/PT	P1	P1	P1	P1	GYP	8'-0"	WD/PT	HM/PT
107	BATH	C1	WD/PT	P1	P1	P1	P1	GYP	8'-0"	WD/PT	HM/PT
108	TOILET	C.T.	WD/PT	P1	P1	P1	P1	GYP	8'-0"	WD/PT	HM/PT
109	LINEN	C1	WD/PT	P1	P1	P1	P1	GYP	8'-0"	WD/PT	HM/PT
110	BEDROOM	C1	WD/PT	P1	P1	P1	P1	GYP	9'-0"	WD/PT	HM/PT
111	CLOSET	C1	WD/PT	P1	P1	P1	P1	GYP	9'-0"	WD/PT	HM/PT

- LEGEND**
- BD = TO BE DETERMINED
 - VCB = VINYL COVE BASE
 - VWC = VINYL WALL COVERING
 - HM = HOLLOW METAL
 - PT = PAINT
 - GWB = GYPSUM BOARD
 - ACT = ACCOUSTICAL CEILING TILE
 - VCT = VINYL COMPOSITE TILE
 - C1 = CARPET 1
 - AL/GL = ALUMINUM / GLAZING
 - HWWD = HARDWOOD FLOORING
 - WD/PT = WOOD / PAINT
 - C.T = CERAMIC TILE

- NOTES**
- 1) VERIFY COLOR SELECTION WITH OWNER PRIOR TO PURCHASE/ORDER OF MATERIALS.
 - 2) ARCHITECT TO APPROVE SUBMITTALS OF ALL FINISH MATERIALS PRIOR TO ORDER.
 - 3) ALL FINISH MATERIALS TO BE INSTALLED IN ACCORDANCE WITH MANUFACTURER'S PRINTED INSTRUCTIONS.
 - 4) PROVIDE PROPER TRANSITION STRIPS BETWEEN ALL FLOORING MATERIALS. ARCHITECT TO APPROVE.
 - 5) PAINT TO BE BENJAMIN MOORE SCRUBBABLE FLAT.
 - 6) FINISH SCHEDULE FOR TYPICAL UNIT PLAN. APPLY TO ALL UNITS.

DOOR SCHEDULE - TYPICAL UNIT PLAN

MARK	ROOM NAME	ROOM NO	DOOR and WINDOW TYPES			FRAME TYPES			DETAILS			REMARKS			
			TYPE	MAT'L	LABEL	NO. REQUIRED/ SIZE	TYPE	MAT'L	LABEL	HEAD	JAMB		SILL DETAIL	HWDR SET	GLAZ. TYPE
101	KITCHEN	102	D	WD	20 MIN.	3'-0" x 6'-8" x 1-3/4"	F-2	WD	20 MIN.	H-2	J-2	S-2	---	---	ENTRY/PEEPHOLE/LOCK/DB
102	DEN	101	A	WD	---	2'-6" x 6'-8" x 1-3/4"	F-2	WD	---	H-2	J-2	S-2	---	---	EXT. GRADE FRENCH
103	MECHANICAL	103	C	WD	---	2'-0" x 6'-8" x 1-3/4"	F-1	WD	---	H-1	J-1	S-1	---	---	---
104	WASHER/DRYER	104	B	WD	---	PR 2'-0" x 6'-8" x 1-3/4"	F-1	WD	---	H-1	J-1	S-1	---	---	BIFOLD DOOR
105	BEDROOM	105	C	WD	---	3'-0" x 6'-8" x 1-3/4"	F-1	WD	---	H-1	J-1	S-1	---	---	PRIVACY LOCK
106	CLOSET	106	C	WD	---	2'-10" x 6'-8" x 1-3/4"	F-1	WD	---	H-1	J-1	S-1	---	---	---
107	BATH	107	C	WD	---	2'-10" x 6'-8" x 1-3/4"	F-1	WD	---	H-1	J-1	S-1	---	---	PRIVACY LOCK
108	TOILET	108	C	WD	---	2'-10" x 6'-8" x 1-3/4"	F-1	WD	---	H-1	J-1	S-1	---	---	PRIVACY LOCK
109	LINEN	109	C	WD	---	2'-0" x 6'-8" x 1-3/4"	F-1	WD	---	H-1	J-1	S-1	---	---	---
110	BEDROOM	110	C	WD	---	3'-0" x 6'-8" x 1-3/4"	F-1	WD	---	H-1	J-1	S-1	---	---	PRIVACY LOCK
111	CLOSET	111	C	WD	---	2'-10" x 6'-8" x 1-3/4"	F-1	WD	---	H-1	J-1	S-1	---	---	---



- DOOR NOTES:**
- 1) ALL INTERIOR TENANT DOORS TO BE PAINT GRADE.
 - 2) ALL DOORS TO BE PREHUNG WOOD FRAME.
 - 3) DOOR SCHEDULE FOR TYPICAL UNIT. APPLY TO ALL UNITS.
 - 4) ALL EXTERIOR DOORS TO HAVE 4" CASING W/ 6" HEAD.
- ⓐ CLEAR GLASS, FULLY TEMPERED IN ACCORDANCE WITH ANSI Z97.1

Order Plans @

Issue & Revisions:

No.	Date	Description
1	04.01.19	CLARIFICATION

ENLARGED PLANS - 2 BR UNIT

Drawn: **MWB**
 Checked: **KEP**
 Contract No. 07-03
 Scale: AS NOTED

040119 of sheets
A5.1

RELEASED FOR CONSTRUCTION

THIS DRAWING IS THE PROPERTY OF PATE DESIGN GROUP AND IS NOT TO BE COPIED IN WHOLE OR IN PART. IT IS TO BE USED FOR THE PROJECT AND SITE SPECIFICALLY IDENTIFIED HEREIN AND IS NOT TO BE USED IN ANY OTHER PROJECT. IT IS TO BE RETURNED UPON REQUEST.