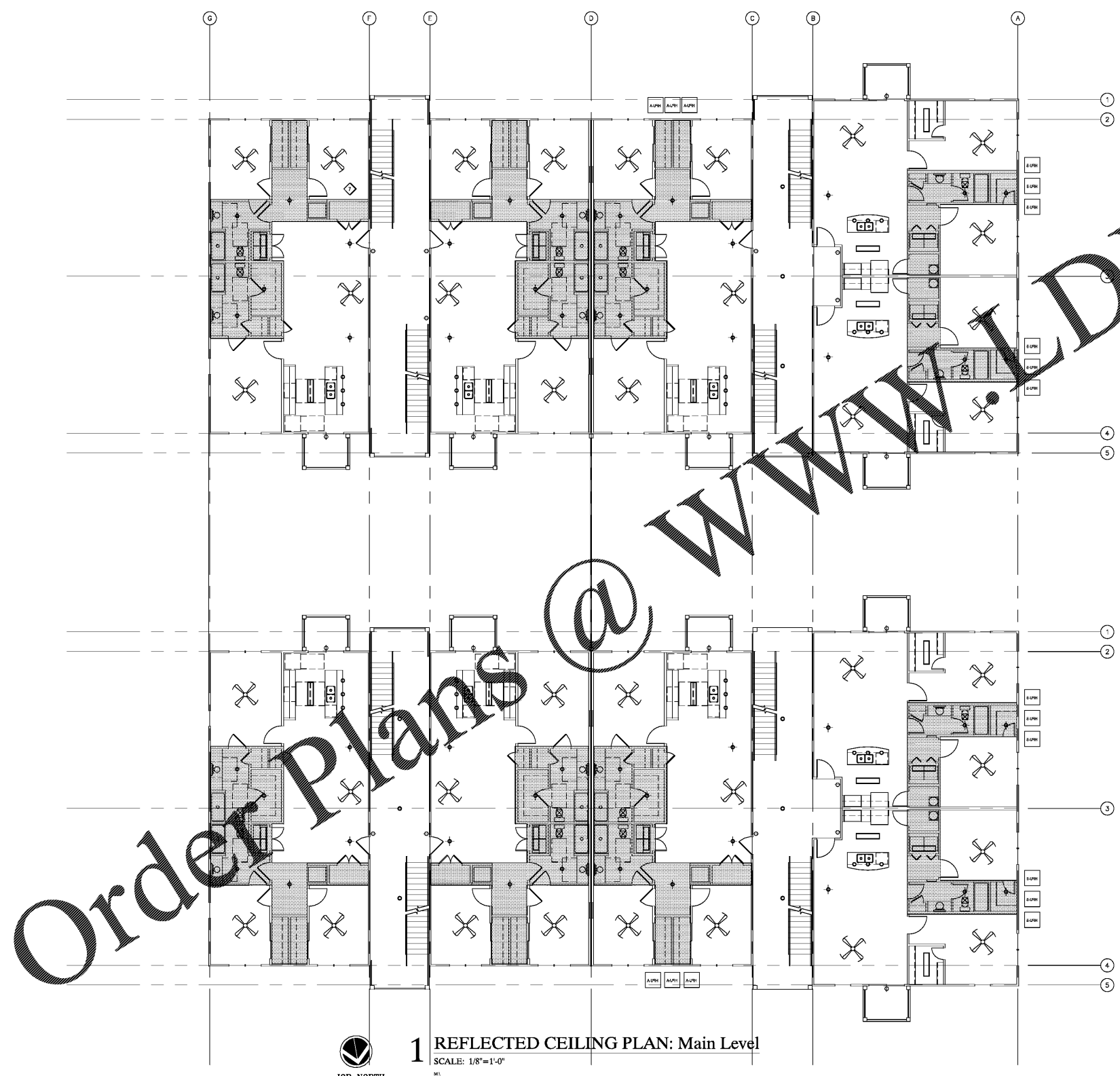




Pate Design Group, Inc.  
 Architecture / Interiors  
 4168 Abbotts Bridge Road  
 Duluth, Georgia 30097  
 (p) 770.814.0885  
 (f) 770.814.0886  
 Kirby@patedesigngroup.com



**LIGHTING FIXTURE LEGEND**

	SURFACE MOUNT FANLIGHT FIXTURE SEE ELECTRICAL DRAWINGS
	TABLE LAMP
	SURFACE MOUNT 4 BULB VAINITY LIGHT SEE ELECTRICAL DRAWINGS
	LOW-MOUNT PENDANT FIXTURE SEE ELECTRICAL DRAWINGS
	SURFACE MOUNT GLOBE FIXTURE SEE ELECTRICAL DRAWINGS
	6" RECESSED DOWNLIGHT FIXTURE SEE ELECTRICAL DRAWINGS
	WALL MOUNT SCONCE FIXTURE SEE ELECTRICAL DRAWINGS
	1'x4' SURFACE MOUNT FLOURESCENT FIXTURE SEE ELECTRICAL DRAWINGS
	EXTERIOR GRADE WALL MOUNTED FIXTURE SEE ELECTRICAL DRAWINGS
	4' SURFACE MOUNT FLOURESCENT STRIP FIXTURE - SEE ELECTRICAL DRAWINGS
	2'x2' RECESSED FLOURESCENT FIXTURE - ACRYLIC LENS SEE ELECTRICAL DRAWINGS
	2'x4' SURFACE MOUNT FLOURESCENT FIXTURE - W/ ACRYLIC LENS - SEE ELECTRICAL DRAWINGS
	EXHAUST FAN - SEE MECHANICAL DRAWINGS
	AREA OF 8'-0" AFF. GYP. CEILING

**CONSTRUCTION NOTES:**

- ◆ DOWNLIGHTS TO BE SWITCHED SEPARATELY AND ON DIMMERS.
- ◆ NO EQUALS OR EQUIVALENTS ACCEPTED.
- ◆ ALL FLOURESCENT LAMPS TO BE 3500K LAMPS.
- ◆ ALL INCANDESCENT LAMPS TO BE FROSTED.
- ◆ DOWNLIGHTS TO BE PLACED ON CENTERLINE OF SOFFIT U.G.N.
- ◆ GYP. CEILING TO BE INSTALLED ON RESILIENT CHANNELS ON BOTTOM CHORD OF ROOF TRUSS.

- RCF NOTES:
1. ALL GWB CEILINGS AT 9' AFF UND
  2. INSTALL GWB CLOS IN ACCORDANCE W UL DETAILS FOR FLOOR/CLG ASSEMBLY
  3. COMPLY WITH GYP ASSOC BEST PRACTICES FOR GWB CLOS AND EXP/CONTROL JOINTS
  4. INCLUDE ALL REQUIRED ACCESS PANELS
  5. SHADED CEILINGS TO BE 8' AFF

Order Plans @ WWW.DIline.com

**1 REFLECTED CEILING PLAN: Main Level**  
 SCALE: 1/8"=1'-0"  
 JOB NORTH


**G-1 AND G-2**  
**WISTERIA RIDGE**  
 Will-O-War LLC  
 75 North Main Street  
 Watkinsville, GA 30677

**Issue & Revisions:**

No.	Date	Description
1	04.01.19	CLARIFICATION

**REFLECTED CEILING PLAN MAIN LEVEL**

Drawn  
 MWB  
 Checked  
 KEP  
 Contract No.  
 07-03  
 Scale  
 AS NOTED



THIS DRAWING IS THE PROPERTY OF PATE DESIGN GROUP AND IS NOT TO BE COPIED IN WHOLE OR IN PART. IT IS TO BE USED FOR THE PROJECT AND SITE SPECIFICALLY IDENTIFIED HEREIN AND IS NOT TO BE USED IN ANY OTHER PROJECT. IT IS TO BE RETURNED UPON REQUEST.

RELEASED FOR CONSTRUCTION