



Pate Design Group, Inc.
Architecture / Interiors

4168 Abbots Bridge Road
Duluth, Georgia 30097

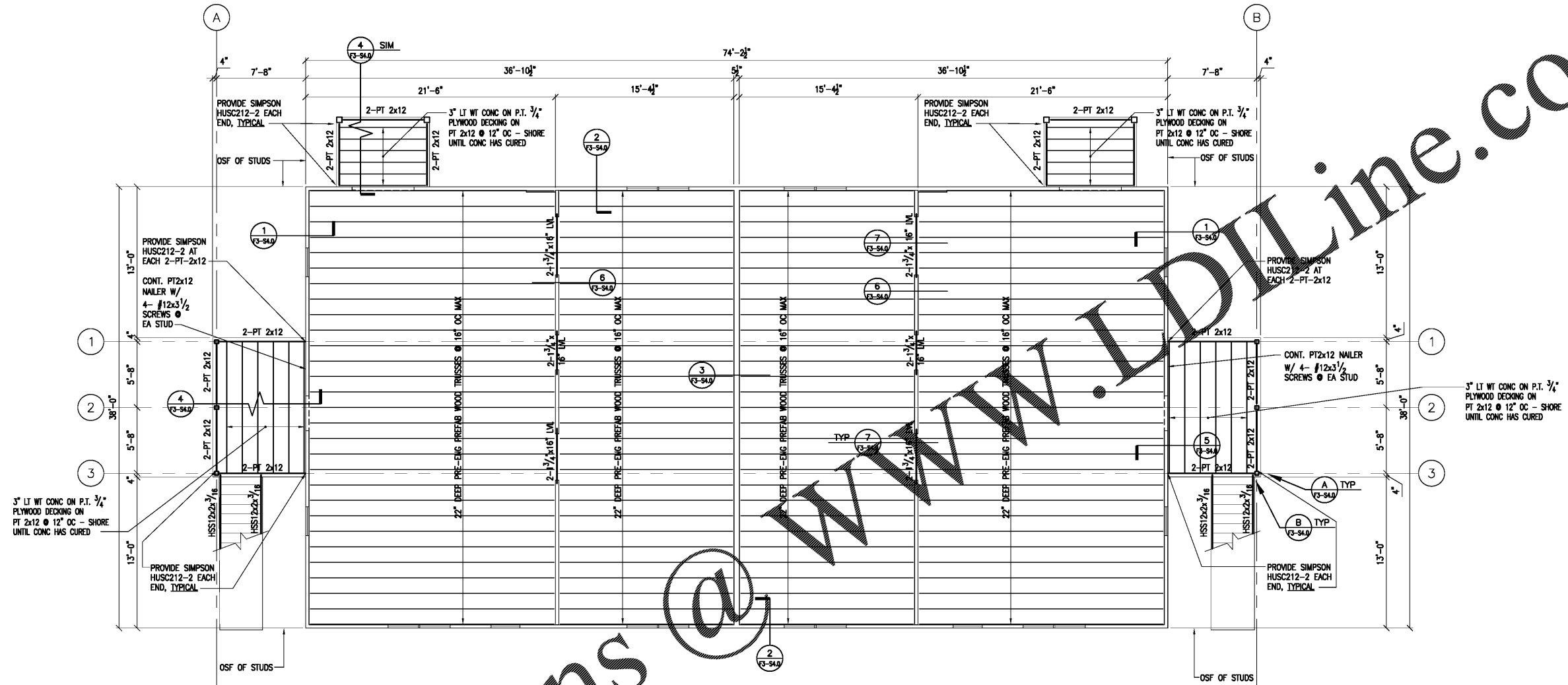
(p) 770.814.0885
(f) 770.814.0886

Kirby@patedesigngroup.com

F-3 UNIT
WISTERIA RIDGE
Will-O-War LLC
75 North Main Street
Watkinsville, GA 30677

FLOOR CONSTRUCTION
3/4" GYPCRETE (SEE ARCH) ON
3/4" T & G APA RATED PLYWOOD
DECK, EXPOSURE 1, WITH PANEL
IDENTIFICATION INDEX OF 48/24
OVER PRE-ENGINEERED PREFAB-
RICATED WOOD TRUSSES AT 16"
O.C. UNLESS NOTED OTHERWISE.
PROVIDE CONSTRUCTION ADHESIVE
BETWEEN DECK AND TRUSSES
AND PROVIDE #8 SCREW OR 10d
NAILS @ 6" ON CENTER, TYPICAL.

NOTE: TRUSS SPACING SHALL BE MAX 24" OC
AND SHALL BE DESIGNED AND ENGINEERED BY
THE TRUSS MANUFACTURERS ENGINEER TO THE
LOAD CRITERIA DESCRIBED ON SHEET F3-S1.0



Order Plans @ WWW.LDOLine.com

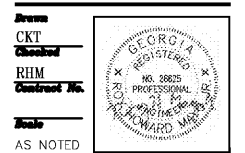
SECOND FLOOR FRAMING PLAN
1/4" = 1'-0"

Issue & Revisions:

No.	Date	Description
1	04.19.18	CLARIFICATION

SECOND FLOOR
FRAMING PLAN

AUBURN STRUCTURAL DESIGN, INC.
ROY H. MAYO, JR., P.E.
2008 JANABROOKE LN
AUBURN, AL 36830
(334) 826-8040
engineer@auststructure.com/
www.auststructure.com



F3-S2.1

040119 of sheets

THIS DRAWING IS THE PROPERTY OF PATE DESIGN GROUP AND IS NOT TO BE COPIED OR REPRODUCED IN ANY MANNER WITHOUT THE WRITTEN CONSENT OF PATE DESIGN GROUP. IT IS TO BE USED ONLY FOR THE PROJECT AND SITE SPECIFICALLY IDENTIFIED HEREIN AND IS NOT TO BE USED IN ANY OTHER PROJECT. IT IS TO BE RETURNED UPON REQUEST.

RELEASED FOR CONSTRUCTION