



Pate Design Group, Inc.  
Architecture / Interiors

4158 Abbotts Bridge Road  
Duluth, Georgia 30097

(p) 770.814.0885  
(f) 770.814.0888

Kirby@patedesigngroup.com

**F-3 UNIT**  
**WISTERIA RIDGE**  
**Will-O-War LLC**  
75 North Main Street  
Watkinsville, GA 30677

Issue & Revisions:

No.	Date	Description
1	04/01/19	CLARIFICATION

**LEVEL TWO**  
**REFLECTED**  
**CEILING PLAN**

Drawn  
MWB  
Checked  
KEP  
Contract No.  
Scale  
AS NOTED



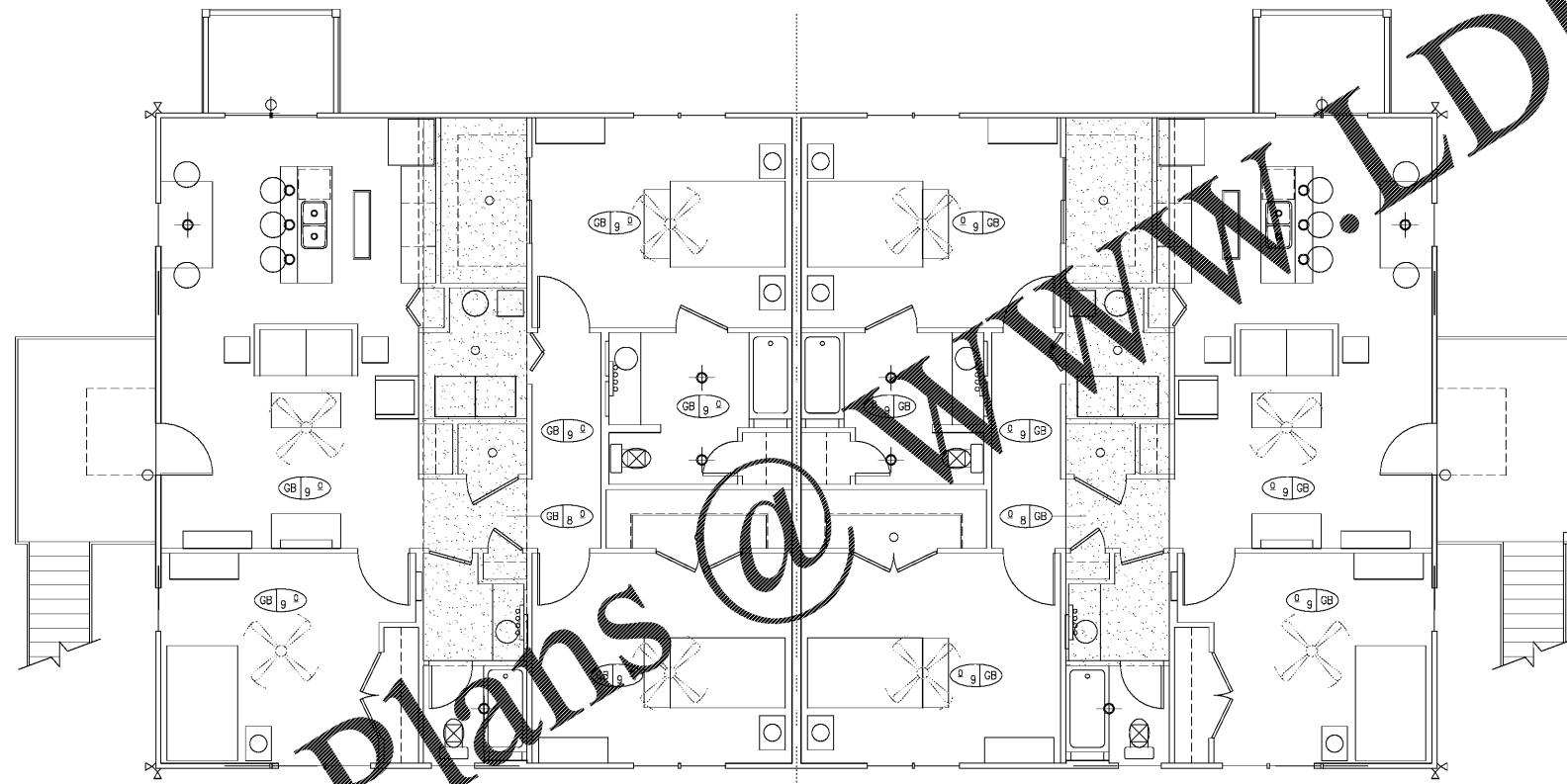
A2.2  
of sheets

040119

THIS DRAWING IS THE PROPERTY OF PATE DESIGN GROUP AND IS NOT TO BE COPIED OR REPRODUCED IN ANY MANNER. IT IS TO BE USED FOR THE PROJECT AND SITE SPECIFICALLY IDENTIFIED HEREIN AND IS NOT TO BE USED IN ANY OTHER PROJECT. IT IS TO BE RETURNED UPON REQUEST.

RELEASED FOR CONSTRUCTION

Order Plans @ WWW.LDILine.com



**1 REFLECTED CEILING PLAN: Level Two**  
SCALE: 1/4"=1'-0"

**LIGHTING FIXTURE LEGEND**

	SURFACE MOUNT FANLIGHT FIXTURE SEE ELECTRICAL DRAWINGS
	TABLE LAMP
	SURFACE MOUNT 4 BULB VANITY LIGHT SEE ELECTRICAL DRAWINGS
	LOW-MOUNT PENDANT FIXTURE SEE ELECTRICAL DRAWINGS
	SURFACE MOUNT GLOBE FIXTURE SEE ELECTRICAL DRAWINGS
	SMALL GLASS PENDANT FIXTURE SEE ELECTRICAL DRAWINGS
	PHOTO-CONTROL HIGH PRESSURE SODIUM FIXTURE SEE ELECTRICAL DRAWINGS
	1'x4' SURFACE MOUNT FLOURESCENT FIXTURE SEE ELECTRICAL DRAWINGS
	EXTERIOR GRADE WALL MOUNTED FIXTURE SEE ELECTRICAL DRAWINGS
	4' SURFACE MOUNT FLOURESCENT STRIP FIXTURE - SEE ELECTRICAL DRAWINGS
	2'x4' SURFACE MOUNT FLOURESCENT FIXTURE SEE ELECTRICAL DRAWINGS
	EXHAUST FAN - SEE MECHANICAL DRAWINGS
	AREA OF 8'-0" AFF. GYP. CEILING
	2'x4' SURFACE MOUNT FLOURESCENT FIXTURE W/ CLOUD WRAP SEE ELECTRICAL DRAWINGS
	2'x4' SURFACE MOUNT FLOURESCENT FIXTURE W/ VANDAL RESISTANCE SEE ELECTRICAL DRAWINGS

**CONSTRUCTION NOTES:**

1. DOWNLIGHTS TO BE SWITCHED SEPARATELY AND ON DIMMERS.
2. NO EQUALS OR EQUIVALENTS ACCEPTED.
3. ALL FLOURESCENT LAMPS TO BE 3500K LAMPS.
4. ALL INCANDESCENT LAMPS TO BE FROSTED.
5. DOWNLIGHTS TO BE PLACED ON CENTERLINE OF SOFFIT U.O.N.
6. GYP. CEILING TO BE INSTALLED ON RESILIENT CHANNELS ON BOTTOM CHORD OF ROOF TRUSS.

**ROP NOTES:**

1. ALL GWB CEILINGS AT 9' AFF LINO
2. INSTALL GWB CLGS IN ACCORDANCE W UL DETAILS FOR FLOOR/CLG ASSEMBLY
3. COMPLY WITH GYP ASSOC BEST PRACTICES FOR GWB CLGS AND EXP/CONTROL JOINTS
4. INCLUDE ALL REQUIRED ACCESS PANELS