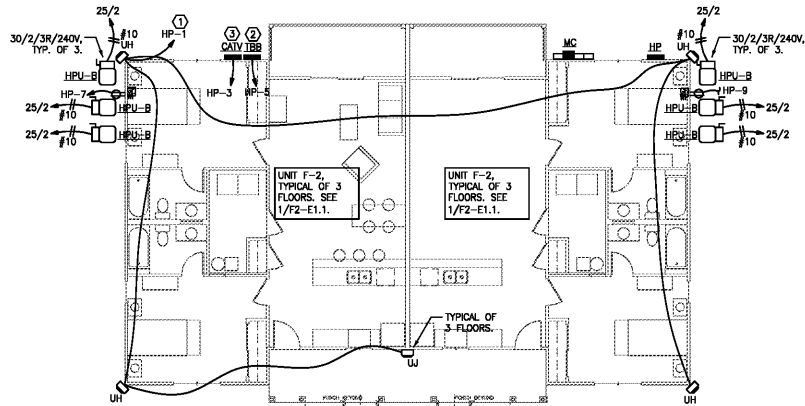


**GENERAL UNIT NOTES:**

- A. PROVIDE AUXILIARY CONTACT IN SMOKE DETECTORS TO ACHIEVE SIMULTANEOUS SYNCHRONOUS OPERATION OF ALL DETECTORS IN THE UNIT UPON ACTIVATION OF ANY ONE DETECTOR IN THE UNIT.
- B. PROVIDE AND INSTALL ELECTRICAL DEVICES IN ALL UNITS AS INDICATED ON THESE TYPICAL UNIT PLANS. CONNECT ALL DEVICES AS INDICATED ON THESE PLANS, WIRING SCHEDULES, PANEL SCHEDULES, AND PER THE NEC.
- C. VERIFY INSTALLATION REQUIREMENTS OF ALL MECHANICAL EQUIPMENT WITH MECHANICAL CONTRACTOR. ADJUST CIRCUIT BREAKER, CONDUCTOR, RACEWAY, AND DISCONNECT SIZES AS REQUIRED BY EQUIPMENT NAMEPLATE.
- D. COORDINATE LOCATION OF TELEPHONE J-BOXES AND CATV SPLITTER BOXES WITH THE RESPECTIVE UTILITIES PRIOR TO BID AND INSTALLATION.
- E. ELECTRICAL OUTLET BOXES SHALL NOT BE INSTALLED BACK TO BACK WITHIN THE SAME STUD SPACE.
- F. BRANCH CIRCUIT CONDUCTORS SHALL BE COPPER, #14 AWG MINIMUM FOR 15A CIRCUITS, #12 AWG MINIMUM FOR 20A CIRCUITS, OR AS NOTED ON THE PLANS OR SCHEDULES.
- G. PROVIDE WHITE DECOR TYPE FINISH FOR ALL RECEPTACLES, SWITCHES, TELEPHONE JACKS, ETC.
- H. VERIFY HEIGHT AND LOCATION OF RECEPTACLES MOUNTED ABOVE COUNTER IN KITCHEN. COORDINATE INSTALLATION WITH CABINETRY. RECEPTACLES TO BE INSTALLED PER NEC REQUIREMENTS.
- I. VERIFY INSTALLATION REQUIREMENTS OF EQUIPMENT AND DEVICES PRIOR TO ROUGH-IN. COORDINATE INSTALLATION WITH GENERAL CONTRACTOR.
- J. ADJACENT DEVICES SHALL BE GANGED TOGETHER UNDER A COMMON COVERPLATE.
- K. COORDINATE THE LOCATION AND INSTALLATION OF TELEPHONE AND CATV CABLES AND DEVICES WITH THE RESPECTIVE UTILITIES PRIOR TO ROUGH-IN.
- L. PROVIDE TAMPER-RESISTANT RECEPTACLES FOR ALL NONLOCKING-TYPE 125-VOLT, 15A AND 20A RECEPTACLES IN DWELLING UNIT AREAS.
- M. ALL NON-SWITCHED GENERAL RECEPTACLES, SMALL APPLIANCE RECEPTACLES, AND REFRIGERATION RECEPTACLES IN THE KITCHEN, PANTRY, BREAKFAST ROOM, DINING ROOM, OR SIMILAR AREA SHALL BE CONNECTED TO ONE OF THE TWO 20A KITCHEN RECEPTACLE BRANCH CIRCUITS AS INDICATED ON THE LOADCENTER SCHEDULE.

**RISER DIAGRAM NOTES:**

1. COORDINATE METERING REQUIREMENTS WITH UTILITY COMPANY PRIOR TO ORDERING METER CENTERS. VERIFY WITH UTILITY THAT METERS ARE COMPATIBLE WITH THE METER CENTERS THAT ARE BEING PROVIDED.
2. SERIES RATE LOAD CENTERS AND PANELS WITH METER CENTERS.
3. METER CENTERS AND PANELS LOCATED OUTDOORS SHALL BE NEMA 3R.
4. WHERE A BUILDING IS SUPPLIED BY MORE THAN ONE SERVICE, PROVIDE PERMANENT PLACARDS AT EACH SERVICE DISCONNECT LOCATION INDICATING THE QUANTITY AND LOCATION OF ALL SERVICE DISCONNECT LOCATIONS PER NEC 230.2(3).
5. WHERE A SINGLE PHASE SERVICE ENTRANCE FEEDER IS PROVIDED AND INSTALLED BY THE UTILITY COMPANY, COORDINATE RACEWAY REQUIREMENTS WITH THE UTILITY COMPANY. PROVIDE CREDIT BACK TO OWNER FOR SERVICE FEEDERS INCLUDED IN BID THAT ARE INSTALLED BY THE UTILITY COMPANY.



**2 BUILDING ELECTRICAL PLAN**  
F2-E1.1 SCALE: 1/8" = 1' - 0"

**PANELBOARD SCHEDULE - HP**

MARKS	NO.	TYPE	VOLTAGE	PHASE	WIRE	MARKETING SURFACE	ENCLOSURE	NEUMA
1	201	POLE	240/120V	3	3			
2	201	POLE	240/120V	3	3			
3	201	POLE	240/120V	3	3			
4	201	POLE	240/120V	3	3			
5	201	POLE	240/120V	3	3			
6	201	POLE	240/120V	3	3			
7	201	POLE	240/120V	3	3			
8	201	POLE	240/120V	3	3			
9	201	POLE	240/120V	3	3			
10	201	POLE	240/120V	3	3			
11	201	POLE	240/120V	3	3			
12	201	POLE	240/120V	3	3			
13	201	POLE	240/120V	3	3			
14	201	POLE	240/120V	3	3			
15	201	POLE	240/120V	3	3			
16	201	POLE	240/120V	3	3			
17	201	POLE	240/120V	3	3			
18	201	POLE	240/120V	3	3			
19	201	POLE	240/120V	3	3			
20	201	POLE	240/120V	3	3			
21	201	POLE	240/120V	3	3			
22	201	POLE	240/120V	3	3			
23	201	POLE	240/120V	3	3			
24	201	POLE	240/120V	3	3			
25	201	POLE	240/120V	3	3			
26	201	POLE	240/120V	3	3			
27	201	POLE	240/120V	3	3			
28	201	POLE	240/120V	3	3			
29	201	POLE	240/120V	3	3			
30	201	POLE	240/120V	3	3			
31	201	POLE	240/120V	3	3			
32	201	POLE	240/120V	3	3			
33	201	POLE	240/120V	3	3			
34	201	POLE	240/120V	3	3			
35	201	POLE	240/120V	3	3			
36	201	POLE	240/120V	3	3			
37	201	POLE	240/120V	3	3			
38	201	POLE	240/120V	3	3			
39	201	POLE	240/120V	3	3			
40	201	POLE	240/120V	3	3			
41	201	POLE	240/120V	3	3			
42	201	POLE	240/120V	3	3			
43	201	POLE	240/120V	3	3			
44	201	POLE	240/120V	3	3			
45	201	POLE	240/120V	3	3			
46	201	POLE	240/120V	3	3			
47	201	POLE	240/120V	3	3			
48	201	POLE	240/120V	3	3			
49	201	POLE	240/120V	3	3			
50	201	POLE	240/120V	3	3			
51	201	POLE	240/120V	3	3			
52	201	POLE	240/120V	3	3			
53	201	POLE	240/120V	3	3			
54	201	POLE	240/120V	3	3			
55	201	POLE	240/120V	3	3			
56	201	POLE	240/120V	3	3			
57	201	POLE	240/120V	3	3			
58	201	POLE	240/120V	3	3			
59	201	POLE	240/120V	3	3			
60	201	POLE	240/120V	3	3			
61	201	POLE	240/120V	3	3			
62	201	POLE	240/120V	3	3			
63	201	POLE	240/120V	3	3			
64	201	POLE	240/120V	3	3			
65	201	POLE	240/120V	3	3			
66	201	POLE	240/120V	3	3			
67	201	POLE	240/120V	3	3			
68	201	POLE	240/120V	3	3			
69	201	POLE	240/120V	3	3			
70	201	POLE	240/120V	3	3			
71	201	POLE	240/120V	3	3			
72	201	POLE	240/120V	3	3			
73	201	POLE	240/120V	3	3			
74	201	POLE	240/120V	3	3			
75	201	POLE	240/120V	3	3			
76	201	POLE	240/120V	3	3			
77	201	POLE	240/120V	3	3			
78	201	POLE	240/120V	3	3			
79	201	POLE	240/120V	3	3			
80	201	POLE	240/120V	3	3			
81	201	POLE	240/120V	3	3			
82	201	POLE	240/120V	3	3			
83	201	POLE	240/120V	3	3			
84	201	POLE	240/120V	3	3			
85	201	POLE	240/120V	3	3			
86	201	POLE	240/120V	3	3			
87	201	POLE	240/120V	3	3			
88	201	POLE	240/120V	3	3			
89	201	POLE	240/120V	3	3			
90	201	POLE	240/120V	3	3			
91	201	POLE	240/120V	3	3			
92	201	POLE	240/120V	3	3			
93	201	POLE	240/120V	3	3			
94	201	POLE	240/120V	3	3			
95	201	POLE	240/120V	3	3			
96	201	POLE	240/120V	3	3			
97	201	POLE	240/120V	3	3			
98	201	POLE	240/120V	3	3			
99	201	POLE	240/120V	3	3			
100	201	POLE	240/120V	3	3			

**LOADCENTER SCHEDULE - F2**

MARKS	NO.	TYPE	VOLTAGE	PHASE	WIRE	MARKETING SURFACE	ENCLOSURE	NEUMA
1	201	POLE	240/120V	3	3			
2	201	POLE	240/120V	3	3			
3	201	POLE	240/120V	3	3			
4	201	POLE	240/120V	3	3			
5	201	POLE	240/120V	3	3			
6	201	POLE	240/120V	3	3			
7	201	POLE	240/120V	3	3			
8	201	POLE	240/120V	3	3			
9	201	POLE	240/120V	3	3			
10	201	POLE	240/120V	3	3			
11	201	POLE	240/120V	3	3			
12	201	POLE	240/120V	3	3			
13	201	POLE	240/120V	3	3			
14	201	POLE	240/120V	3	3			
15	201	POLE	240/120V	3	3			
16	201	POLE	240/120V	3	3			
17	201	POLE	240/120V	3	3			
18	201	POLE	240/120V	3	3			
19	201	POLE	240/120V	3	3			
20	201	POLE	240/120V	3	3			
21	201	POLE	240/120V	3	3			
22	201	POLE	240/120V	3	3			
23	201	POLE	240/120V	3	3			
24	201	POLE	240/120V	3	3			
25	201	POLE	240/120V	3	3			
26	201	POLE	240/120V	3	3			
27	201	POLE	240/120V	3	3			
28	201	POLE	240/120V	3	3			
29	201	POLE	240/120V	3	3			
30	201	POLE	240/120V	3	3			
31	201	POLE	240/120V	3	3			
32	201	POLE	240/120V	3	3			
33	201	POLE	240/120V	3	3			
34	201	POLE	240/120V	3	3			
35	201	POLE	240/120V	3	3			
36	201	POLE	240/120V	3	3			
37	201	POLE	240/120V	3	3			
38	201	POLE	240/120V	3	3			
39	201	POLE	240/120V	3	3			
40	201	POLE	240/120V	3	3			
41	201	POLE	240/120V	3	3			
42	201	POLE	240/120V	3	3			
43	201	POLE	240/120V	3	3			
44	201	POLE	240/120V	3	3			
45	201	POLE	240/120V	3	3			
46	201	POLE	240/120V	3				