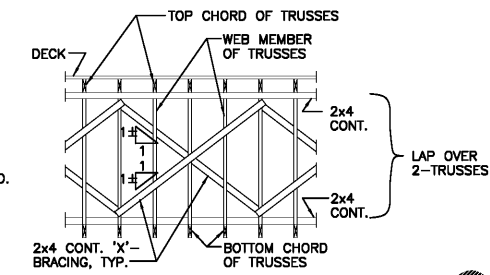


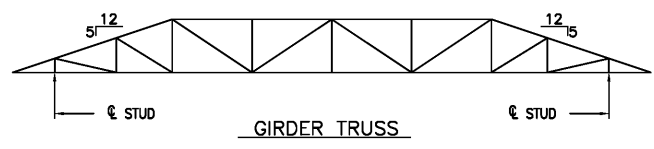
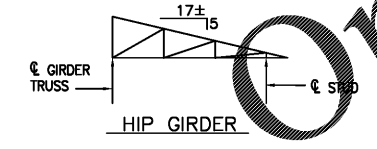
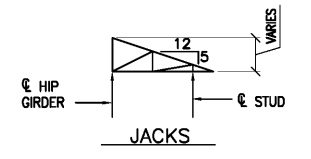
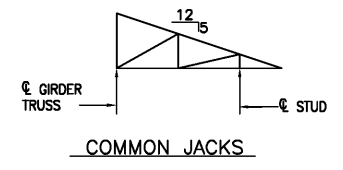
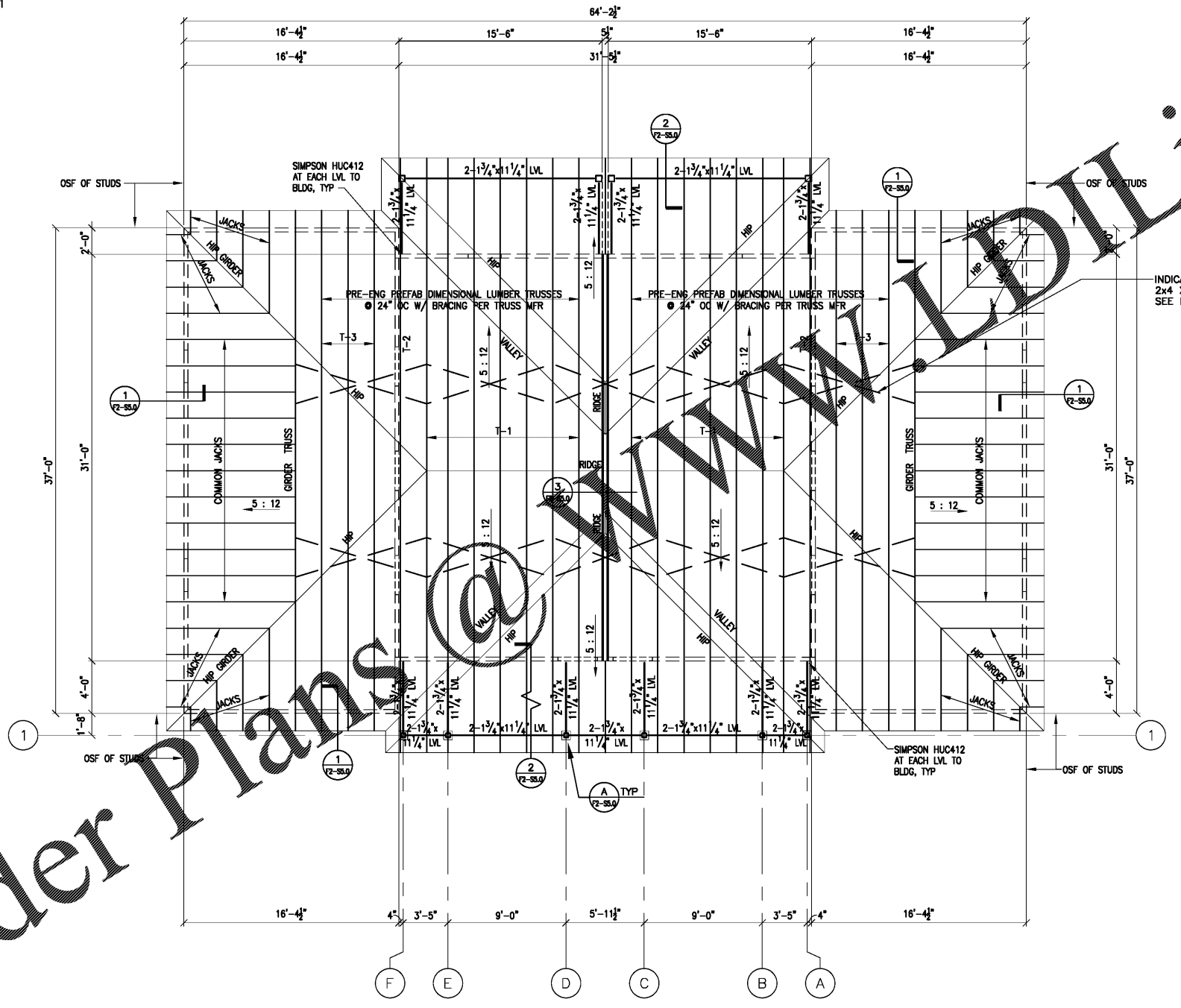
- NOTES:**
1. TOP & BOTTOM CHORDS OF TRUSSES SHALL BE 2x6 MIN.
 2. PROVIDE PANEL POINTS IN TRUSSES @ 8'-0" O.C. MAX. & PANEL POINTS IN HIP JACKS & GIRDER TRUSSES @ 6'-0" O.C. MAX.
 3. COORDINATE ALL TRUSS DIAGRAMS W/ ARCH. DRAWINGS.
 4. COORDINATE TRUSS PANEL POINTS WITH MECHANICAL DUCT WORK. SEE MECHANICAL DRAWINGS.
 5. DESIGN SPECIAL TRUSSES WHERE MECHANICAL DUCT WORK REQUIRES SEPARATION OF TRUSSES (34" O.C. MAX.)
 6. PROVIDE 2x6 BLOCKING @ 24" O.C. MAX. BETWEEN TOP & BOTTOM CHORD OF TRUSSES WHERE TRUSSES ARE SEPARATED.
 7. THE GENERAL CONTRACTOR SHALL BE RESPONSIBLE FOR COORDINATION ALL TRUSS PROFILES AND DIMENSIONS WITH ARCHITECTURAL, MECHANICAL, AND OTHER DRAWINGS.
 8. PROVIDE CONTINUOUS 2x6 BLOCKING AT ALL HIP, RIDGES, VALLEYS, CHANGES IN DECK DIRECTION, AND ALL OTHER UNSUPPORTED DECK EDGE CONDITIONS BETWEEN TRUSSES OR OTHER FRAMING WITH 2-16d EACH END, TYPICAL.



TYPICAL 'X'-BRACING DETAIL

NOTE: BRACING SHOWN THUS SHALL BE INSTALLED IN ADDITION TO THE BRACING REQUIRED BY THE TRUSS DESIGN ENGINEER AND TRUSS DRAWINGS, TYPICAL.

ROOF CONSTRUCTION
 5/8" TYP. BLACK ASP. RATED PLYWOOD DECK, NUMBER 1, WITH PANEL IDENTIFICATION INDEX OF 40/20 OVER PRE-ENGINEERED PREFABRICATED DIMENSIONAL LUMBER TRUSSES & JACKS @ 24" O.C. MAXIMUM, OR CLOSER SPACING IF/AS REQUIRED BY TRUSS DESIGN ENGINEER.



NOTE: MAXIMUM DEFLECTIONS FOR ALL TRUSSES SHALL BE: DEAD PLUS LIVE-----L/240 LIVE LOAD ONLY-----L/360

ROOF FRAMING PLAN
 1/4" = 1'-0"



Pate Design Group, Inc.
 Architecture / Interiors
 4168 Abbots Bridge Road
 Duluth, Georgia 30097
 (p) 770.814.0885
 (f) 770.814.0886
 Kirby@patedesigngroup.com

F-2 UNIT
 WISTERIA RIDGE
 Will-O-War LLC
 75 North Main Street
 Watkinsonville, GA 30677

Issue & Revisions:

No.	Date	Description
1	04-11-19	CLARIFICATION

ROOF FRAMING PLAN

AUBURN STRUCTURAL DESIGN, INC.
 ROY H. MAYO, JR., P.E.
 2008 JANABROOKE LN
 AUBURN, AL 36830
 (334) 825-8040
 engineer@aststructure.com
 www.aststructure.com

AS NOTED

F2-S2.2

RELEASED FOR CONSTRUCTION