

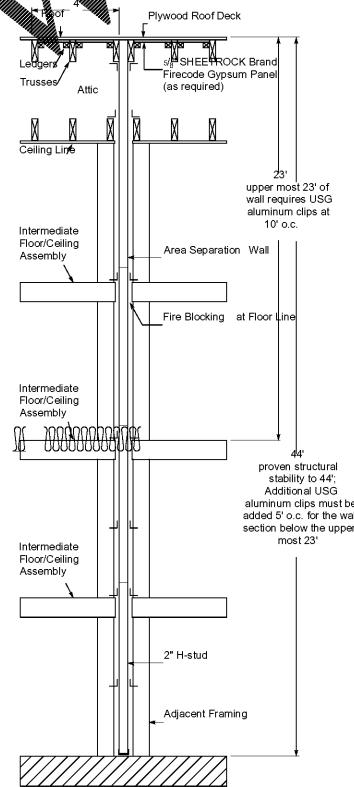
Order Plans @ WWW.IDIline.com

4 DETAIL: 2 HR WALL Clip Spacing
SCALE: 3/4" = 1'-0"

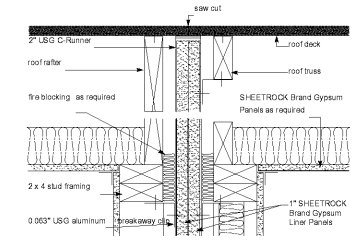
N A M E O F
 D E S I G N E R
 T I T L E
 A D D R E S S
 C I T Y
 S T A T E
 Z I P
 P H O N E
 F A X
 E M A I L
 W E B

5 GYP. ASSOC. G. ASW 900
SCALE: N.T.S.

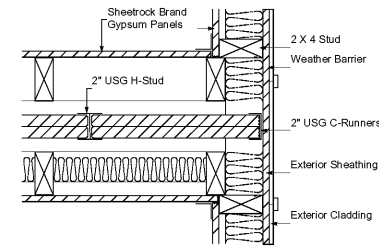
GA FILE NO. ASW 900	PROPRIETARY*	2 HOUR FIRE	60 to 84 STD SOUND
<p>AREA SEPARATION WALLS</p> <p>GYP. ASSOC. G. ASW 900</p> <p>Two layers 1" x 4" proprietary gyp. & gypsum panels bonded between 2" floor and ceiling runners with 2" stud. It must balance separate panel of gypsum panels. (P.A.S.)</p> <p>4" x 4" minimum air space must be maintained between wall components and adjacent framing (as indicated by dotted lines in sketch). An air channel to air air space, the steel components are covered with 7" wide layers of 1" gypsum board or 1" mineral fiber insulation. An air channel to ceiling, one or both faces of the gypsum wall are covered with 1" mineral fiber insulation. The gypsum board panels are 10' regular gypsum board panels attached to the steel components.</p> <p>Sealed with 2 x 4 stud base with 10' regular gypsum on each side of assembly and 2" airspace there is stud space on both sides.</p> <p>PROPRIETARY GYPSUM BOARD United States Gypsum Company</p> <p>PROPRIETARY GYPSUM BOARD 1" SHEETROCK Brand Gypsum Liner Panels</p>			
<p>Table: Approx. Weight: 12.5 lbs/ft² Fire Test: UL-10C, E-812 U.L.C. No. Q200 Survey Test: RAL, T-2000, E-12-00</p>			



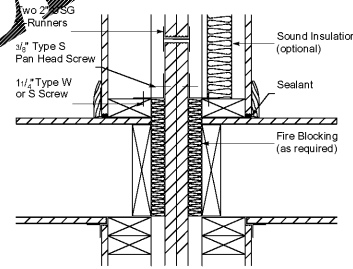
1 DETAIL: 2 HR WALL Intersection @ Roof
SCALE: 3/4" = 1'-0"



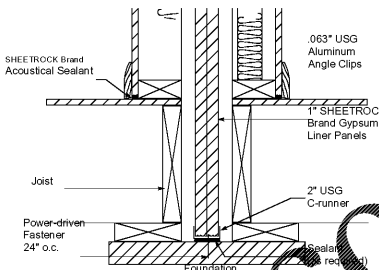
2 DETAIL: 2 HR WALL Exterior Intersection
SCALE: 3/4" = 1'-0"



3 DETAIL: 2 HR WALL @ Intermediate Floor
SCALE: 3/4" = 1'-0"



4 DETAIL: 2 HR WALL @ Foundation
SCALE: 3/4" = 1'-0"



Issue & Revisions:

No.	Date	Description
1	04.01.19	CLARIFICATION

PARTITION TYPES/DETAILS

Drawn: MWB
 Checked: KEP
 Contract No.: 07-03
 Scale: AS NOTED



030519
 040119
A6.2
 of sheets



Pate Design Group, Inc.
 Architecture / Interiors
 4168 Abbotts Bridge Road
 Duluth, Georgia 30097
 (p) 770.814.0885
 (f) 770.814.0886
 Kirby@patedesigngroup.com

F-2 UNIT
 WISTERIA RIDGE
 Will-O-War LLC
 75 North Main Street
 Watkinsville, GA 30677

THIS DRAWING IS THE PROPERTY OF PATE DESIGN GROUP AND IS NOT TO BE COPIED IN WHOLE OR IN PART. IT IS TO BE USED FOR THE PROJECT AND SITE SPECIFICALLY IDENTIFIED HEREIN AND IS NOT TO BE USED IN ANY OTHER PROJECT. IT IS TO BE RETURNED UPON REQUEST.

RELEASED FOR CONSTRUCTION