



Pate Design Group, Inc.
Architecture / Interiors

4168 Abbots Bridge Road
Duluth, Georgia 30097

(p) 770.814.0885
(f) 770.814.0886

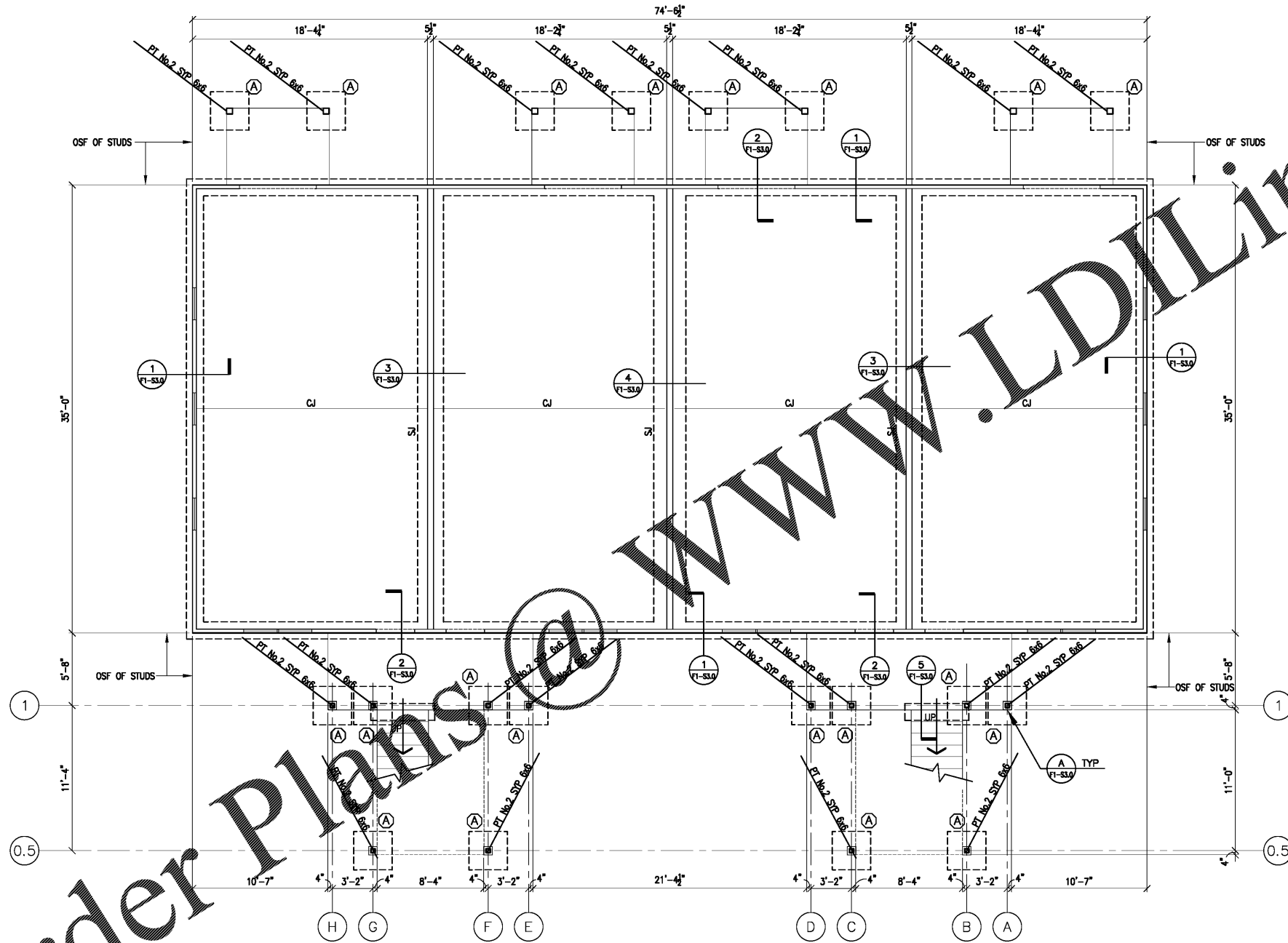
kirby@patedesigngroup.com

FLOOR CONSTRUCTION
4" CONCRETE SLAB W/ 6x6-W1.4x
W1.4 W.W.R. OVER VAPOR BARRIER
OVER 4" POROUS FILL
FINISH FLOOR ELEVATION = 0'-0"
TOP OF INT. FTG EL. = -2'-0" BELOW FF
TOP OF EXT. FTG EL. = -2'-0" BELOW FF
TOP OF PIER EL. = -0'-8" BELOW FF
STEP FOOTING AS REQUIRED TO MAINTAIN
DEPTHS PER GEOTECHNICAL REPORT PER
SITE PLAN FINISH GRADES, BUT NOT LESS
THAN 12" COVER BELOW GRADE, TYP.

NOTE: CONTRACTOR SHALL
VERIFY ALL DIMENSIONS AND
COORDINATE BUILDING
FINISHES AND LOCATIONS WITH
ARCHITECTURAL DRAWINGS.

NOTE: USE SECTION 1a/F1-S3.0
WHERE FINISH GRADE ABUTTING THE
BUILDING IS LOWER THAN 8 INCHES
BELOW FINISH FLOOR.
CONTRACTOR SHALL CONFIRM
LOCATION OF ALL UTILITIES BEFORE
BEGINNING CONSTRUCTION.

1. PROVIDE FOOTING STEPS AS REQUIRED
BY FINISHED GRADES. SEE F1-S1.0 FOR
TYPICAL DETAIL.
2. SLOPE SLABS TO DRAINS AND DEPRESS
AS REQUIRED - SEE ARCH.
3. SEE F1-S1.0 FOR SJ & JI DETAILS.
4. PROVIDE BLOCKOUT SLAB AS
REQUIRED. COORDINATE WITH ARCH DWGS
FOR EXACT SIZE, LOCATION, ETC.



FOUNDATION + FLOOR PLAN
1/4" = 1'-0"

FOOTING SCHEDULE			
MARK	SIZE	DEPTH	REINFORCEMENT
(A)	3'-0" x 3'-0"	12"	4-#5 EA. WAY T&B W/ STD. 180° HOOK EA. END

AUBURN STRUCTURAL
DESIGN, INC.
ROY H. MAYO, JR., P.E.
2008 JANABROOKE LN
AUBURN, AL 36820
(334) 826-8040
engineer@auststructure.com
www.auststructure.com

Issue & Revisions:

No.	Date	Description
1	04/19	CLARIFICATION

**FOUNDATION &
FLOOR PLAN**

Drawn
CKT
Checked
RHM
Contract No.
Scale
AS NOTED

F1-S2.0

THIS DRAWING IS THE PROPERTY OF PATE DESIGN GROUP AND IS
NOT TO BE COPIED OR REPRODUCED IN ANY MANNER. IT IS TO BE USED FOR THE
PROJECT AND SITE SPECIFICALLY IDENTIFIED HEREIN AND IS NOT TO BE
USED IN ANY OTHER PROJECT. IT IS TO BE RETURNED UPON REQUEST.

Order Plans @

WWW.LDILLING.COM

F-1 UNIT
WISTERIA RIDGE
Will-O-War LLC
75 North Main Street
Watkinsville, GA 30677

RELEASED FOR CONSTRUCTION