



Pate Design Group, Inc.
Architecture / Interiors

4168 Abbotts Bridge Road
Duluth, Georgia 30097

(p) 770.814.0885
(f) 770.814.0888

Kirby@patedesigngroup.com

F-1 UNIT
WISTERIA RIDGE
Will-O-War LLC
75 North Main Street
Watkinsville, GA 30677

Issue & Revisions:

No.	Date	Description
--	02/14/07	PRELIMINARY SET
--		
--		
--		
--		
--		
--		
--		
--		
--		

**PARTITION
TYPES/DETAILS**

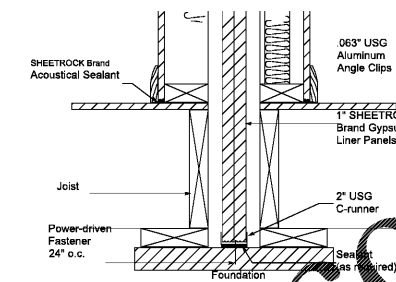
Drawn
MWB
Checked
KEP
Contract No.
AS NOTED



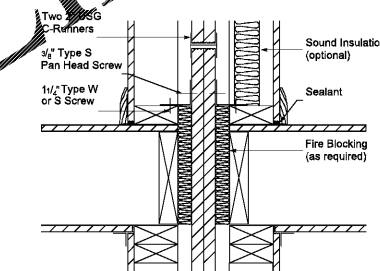
A6.2
of sheets

THIS DRAWING IS THE PROPERTY OF PATE DESIGN GROUP AND IS NOT TO BE COPIED IN WHOLE OR IN PART. IT IS TO BE USED FOR THE PROJECT AND SITE SPECIFICALLY DENOTED HEREIN AND IS NOT TO BE USED IN ANY OTHER PROJECT. IT IS TO BE RETURNED UPON REQUEST.

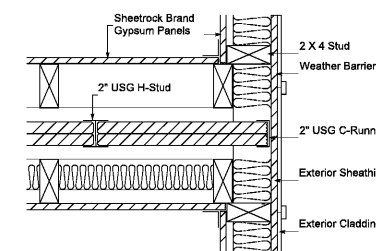
RELEASED FOR CONSTRUCTION



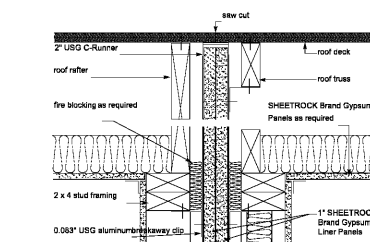
4 DETAIL: 2 HR WALL @ Foundation
SCALE: 3/4" = 1'-0"



3 DETAIL: 2 HR WALL @ Intermediate Floor
SCALE: 3/4" = 1'-0"



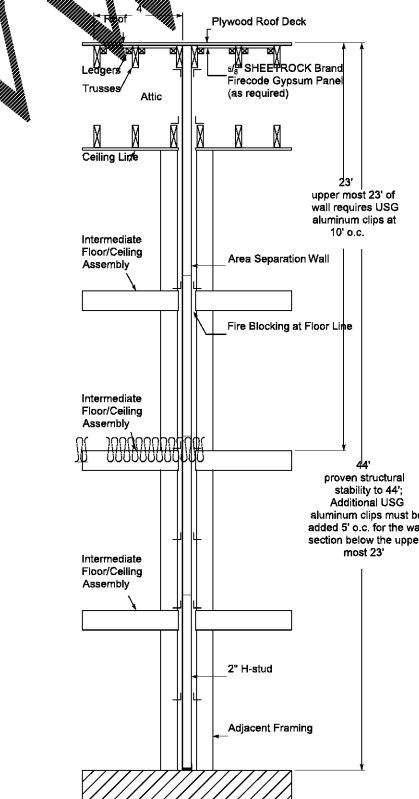
2 DETAIL: 2 HR WALL Exterior Intersection
SCALE: 3/4" = 1'-0"



1 DETAIL: 2 HR WALL Intersection @ Roof
SCALE: 3/4" = 1'-0"

GA FILE NO. ASW 1919	PROPRIETARY*	2 HOUR FIRE	60 to 64 STC SOUND
GYPSEUM WALLBOARD, SPEC. 30 STOPS			
Two types 1" x 24" paper-type X gypsum panels, installed between 2" face and ceiling assembly shall be close fit along vertical edges of gypsum panels. SHALL			
A 1/2" gypsum or space must be installed between steel members and adjacent framing (as indicated by dotted line to wall). An air space is not an option, the steel members are recessed into 1/2" wide rabbet of 1/2" gypsum board or 1/4" tapered steel member. An air space is not allowed. One or both sides of the separation and see cross-section for required fire resistance required to the gypsum liner panels or 1/4" regular gypsum board below studied to the steel members.			
Sound tested with 1/2" x 4" stud with space with 1/4" regular gypsum wallboard, each 1/4" of assembly and 1/2" mineral fiber in stud space on both sides.			
United States Gypsum Company	PROPRIETARY GYPSEUM BOARD	1" SHEETROCK Brand Gypsum Liner Panels	1" SHEETROCK Brand Gypsum Liner Panels
		Approved: M.W. Beckwith, P.E., E.I.	Approved: M.W. Beckwith, P.E., E.I.
		Drawn: M.W. Beckwith	Drawn: M.W. Beckwith
		Checked: M.W. Beckwith	Checked: M.W. Beckwith
		Date: 12/23/06	Date: 12/23/06
		Scale: 1/4" = 1'-0"	Scale: 1/4" = 1'-0"

5 GYP. ASSOC. GA ASW 1900
SCALE: N.T.S.



4 DETAIL: 2 HR WALL Clip Spacing
SCALE: 3/4" = 1'-0"

Order Plans @ WWW.EJDLines.com