

Aug 01, 2019  
 FIRM NUMBER = C-2130

ARCHITECT



**THE WILSON GROUP**

P O BOX 5510  
 CHARLOTTE, NC 28209  
 (704) 351-9747

PROJECT MANAGER / CIVIL ENGINEER

**TALBERT & BRIGHT**

4810 SHELLEY DRIVE  
 WILMINGTON, NC 28405  
 (910) 753-5250

STRUCTURAL ENGINEER

**STEWART**

101 N. TRYON ST., SUITE 1400  
 CHARLOTTE, NC 28202  
 (704) 906-3523

MECHANICAL, ELECTRICAL, PLUMBING &  
 FIRE PROTECTION ENGINEER

**SABER ENGINEERING**

2923 S. TRYON ST., SUITE 280  
 CHARLOTTE, NC 28203  
 (704) 373-0088

REVISIONS

NO.	DATE	DESCRIPTION

DATE AUGUST 2, 2019

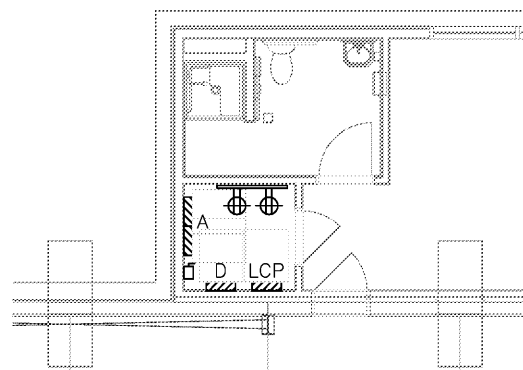
PROJECT NUMBER 9217-000

SHEET TITLE

**POWER PLAN**

SHEET NUMBER

**E2**



**2 ENLARGED ELECTRICAL ROOM**  
 1/4" = 1'-0"

APPROXIMATE LOCATION OF NEW UTILITY TRANSFORMER FOR BUILDING ELEC SERVICE. SEE CIVIL FOR EXACT LOCATION.

PROVIDE 100A/3P/1FN DISCONNECT AND HUBBLE PIN/SLEEVE RECEPTACLE FOR FUTURE GPU. COORDINATE EXACT LOCATION AND RECEPTACLE CONFIGURATION WITH OWNER.

INDOOR UNIT IS POWERED FROM OUTDOOR UNIT.

SEE GROUND RING NOTE 2 (TYP)

SEE GROUND RING NOTES 5 & 6 (TYP)

PROVIDE POWER/CONTROL WIRING TO PUMP PUMP PER MANUFACTURERS REQUIREMENTS. PROVIDE CONDUIT SEALS AS REQUIRED. CLASS 1 DIV 1 AREA EXTENDS UP FROM ANY VENT OR UNSEALED OPENING INTO PUMP. SEE CIVIL FOR EXACT LOCATION.

PROVIDE POWER FOR OIL SEPARATOR ALARM PANEL. COORDINATE EXACT LOCATION WITH CIVIL. COORDINATE FINAL CONNECTION REQUIREMENTS WITH PLUMBING CONTRACTOR.

- AIRCRAFT GROUND/GROUND RING NOTES:**
- COORDINATE WITH CIVIL DRAWINGS PRIOR TO BEGINNING WORK.
  - 3/4" DIAMETER X 10'-0" SECTIONAL COPPER CLAD GROUND RODS. PROVIDE WITH APPROPRIATE LISTED COUPLING TO ACHIEVE A DEPTH OF 12'-0" OR POINT OF REFUSAL. CONNECTION TO BE MADE USING CADWELD OR COMPRESSION COUPLING IF APPROVED BY OWNER.
  - THE EARTH SHALL BE COMPACTED AND MADE TIGHT AGAINST ALL GROUND RODS, GROUND WIRING, CONDUCTORS, ETC.
  - CUTTING AND PATCHING OF ASPHALT AND CONCRETE, AND LANDSCAPE REPAIR SHALL BE INCLUDED. COORDINATE WITH THE OWNER, CIVIL AND GENERAL CONTRACTOR AS REQUIRED. ALL MATERIAL SHALL BE OF SIMILAR STRENGTH, COLOR, ETC.
  - THE GROUND RING SHALL BE #3/0 BARE TINNED COPPER CONDUCTOR BURIED A MINIMUM OF 30" BELOW FINISHED GRADE.
  - THE GROUND RING SHALL REMAIN A MINIMUM OF 30" FROM THE STRUCTURE.
  - BOND ALL AIRCRAFT GROUND RECEPTACLES TO THE GROUND RING UTILIZING #2 BARE TINNED COPPER BETWEEN RECEPTACLES AND TO BUILDING COLUMN GROUND RING CONNECTION POINT. SEE ARCHITECTURAL PLANS FOR THE DOWN AND GROUND POINTS.
  - AIRCRAFT GROUNDING RECEPTACLE. SEE ARCHITECTURAL PLANS FOR EXACT LOCATIONS. SEE SYMBOL LEGEND FOR SPECIFICATION.
  - PROVIDE CADWELD CONNECTION TO COLUMN ABOVE FINISH FLOOR. CONNECT 3/0 BARE TINNED COPPER CONDUCTOR OUT TO GROUND RING.

- NEC 513 NOTES:**
- THE AREA BELOW 18" ABOVE FINISHED FLOOR (AFF) IS A CLASS 1, DIVISION 2 AREA. ANY CONDUIT PASSING THROUGH THIS AREA MUST HAVE SEALS IN ACCORDANCE WITH 501.15 OR 505.16 AS APPLICABLE. ALL DEVICES / PANELS TO BE INSTALLED A MINIMUM OF 24" ABOVE FINISHED FLOOR.
  - THE AREA WITHIN 5 FEET HORIZONTALLY FROM AIRCRAFT TOWER PLANTS OR AIRCRAFT FUEL TANKS IS CLASSIFIED AS A CLASS 1, DIVISION 2 LOCATION THAT EXTENDS UPWARD FROM THE FLOOR TO LEVEL 5 FEET ABOVE THE UPPER SURFACE OF THE BEAMS AND OF ENGINE ENCLOSURES. ALL ELECTRICAL DEVICES ARE TO BE INSTALLED OUTSIDE OF THIS AREA. SEE ARCHITECTURAL PLANS FOR DEVICES ANTICIPATED AIRCRAFT SIZES.
  - DOORS TO OFFICE AND SHOP ARE TO HAVE AUTOMATIC BOTTOM SEALS SUCH THAT THESE AREAS SUITABLY CUT-OFF FROM THE HANGAR AREAS.

PROVIDE 100A/3P/1FN DISCONNECT AND HUBBLE PIN/SLEEVE RECEPTACLE FOR FUTURE GPU. COORDINATE EXACT LOCATION AND RECEPTACLE CONFIGURATION WITH OWNER.

**1 POWER PLAN**  
 1/8" = 1'-0"

