

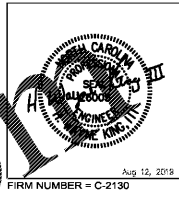
TENANT GAS DEMAND	
DESCRIPTION	MBH
UH-1	100
UH-2	100
TOTAL MBH	200

PIPE SIZING BASED ON A 150 FT DEVELOPED LENGTH WITH A MINIMUM OF 8.0 INCH W.C. INITIAL SUPPLY PRESSURE, PER TABLE 402.4(3), 2018 NORTH CAROLINA FUEL GAS CODE

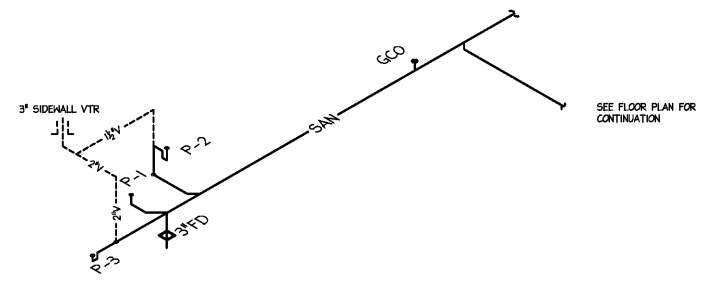
- GAS PIPING NOTES**
1. WORK TO INCLUDE PIPING FROM GAS METER TO ALL GAS FIRED EQUIPMENT. FINAL CONNECTION TO ROOFTOP UNITS BY MECHANICAL CONTRACTOR. MECHANICAL CONTRACTOR TO PROVIDE SHUT-OFF VALVE, DIRT TRAP, AND PRESSURE REGULATOR AT EACH PIECE OF EQUIPMENT.
 2. ALL WORK SHALL BE IN ACCORDANCE WITH ALL APPLICABLE LOCAL CODE REQUIREMENTS AND THE PROVISIONS OF NFPA-58.
 3. THE CONTRACTOR SHALL SUPPLY ALL PERMITS AND LICENSES REQUIRED FOR THE WORK AND FOR ALL INSPECTIONS REQUIRED.
 4. PIPE 3" AND SMALLER SHALL BE SCHEDULE 40 STEEL WITH THREADED MALLEABLE FITTINGS.
 5. VALVES SHALL BE GAS COCKS MANUFACTURED BY NIBCO.
 6. ALL GAS PIPING LOCATED UNDER THE FLOOR SLABS SHALL BE INSTALLED IN CONDUIT OR AS REQUIRED BY CODE.
 7. ALL PIPING EXPOSED TO THE OUTDOORS OR RUN IN UNCONDITIONED SPACES SHALL BE PAINTED WITH TWO COATS OF ENAMEL.



2923 South Tryon Street, Suite 280
Charlotte, North Carolina 28203
tel 704.373.0088



NEW CORPORATE HANGAR
4005 AIRPORT ROAD
SOUTHPORT, NC 28461

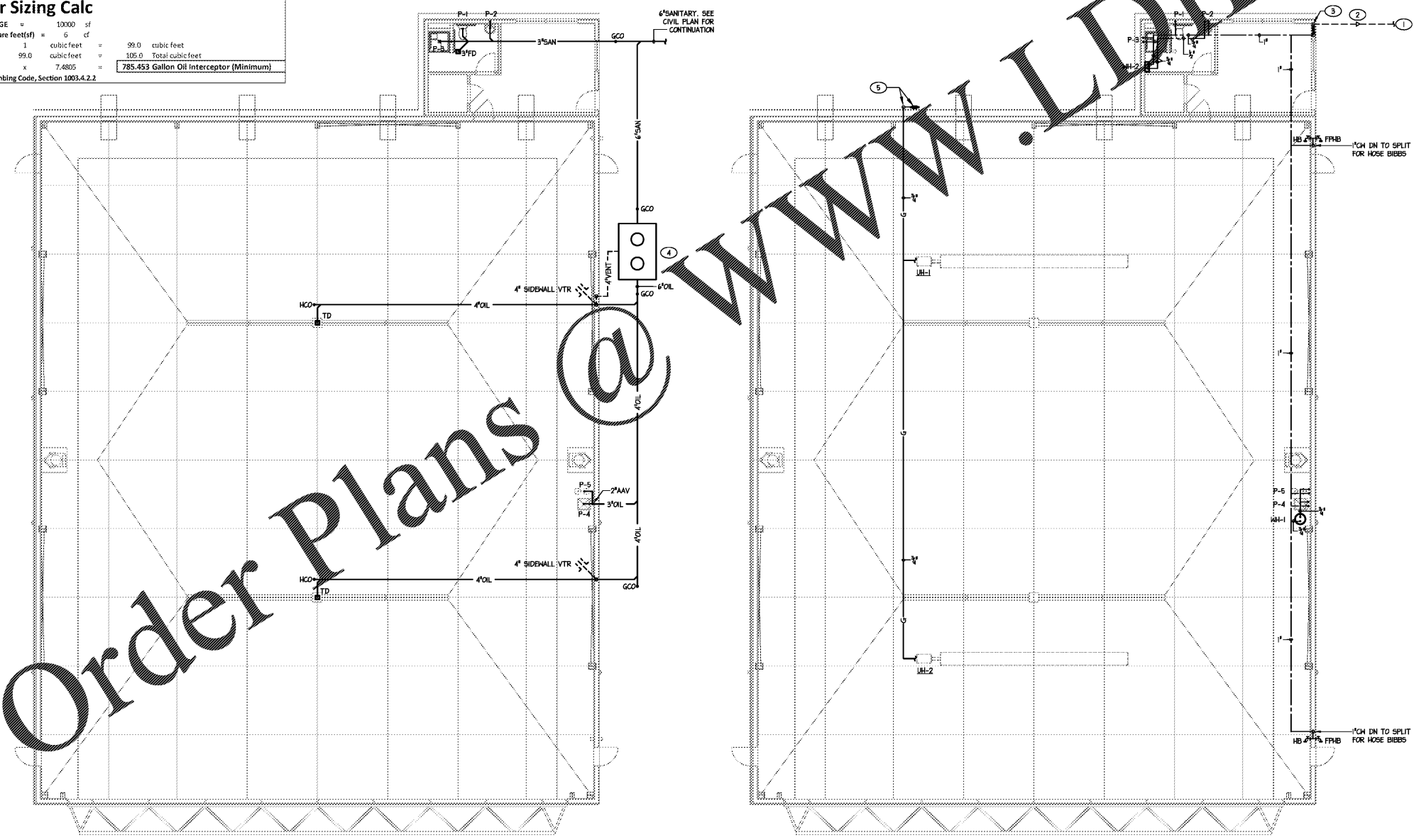


3 WASTE/VENT ISOMETRIC
NO SCALE

Oil Interceptor Sizing Calc

TOTAL SQUARE FOOTAGE OF GARAGE = 10000 sf
 6 cubic feet(cu) for the first 100 square feet(sf) = 6 cu
 9900 square feet X 1 cubic feet = 99.0 cubic feet
 6 cubic feet + 99.0 cubic feet = 105.0 Total cubic feet
 105.0 Total cubic feet x 7.4805 = **785.453 Gallon Oil Interceptor (Minimum)**

* Calculation per International Plumbing Code, Section 1003.4.2.2



1 PLUMBING WASTE/VENT PLAN
1/8" = 1'-0"

2 PLUMBING SUPPLY/GAS PLAN
1/8" = 1'-0"

- INDEXED NOTES - THIS SHEET**
1. DOMESTIC CH. SEE CIVIL PLANS FOR CONTINUATION. LOAD REQUIREMENT AT FACE OF BUILDING = 25 GPM @ 45 PSI
 2. PROVIDE TRANSITION FITTING (IF NEEDED) TO MEET CIVIL CONNECTION SIZE
 3. 1/2" DOMESTIC SUPPLY TO BUILDING WITH SHUT-OFF VALVE INSTALLED PER SECTION 604.1 PER 2018 NCCF, ACCESSIBLE WITHOUT THE NEED FOR A LADDER OR TOOL.
 4. STRIEM 05-1000 OIL SEPARATOR. COORDINATE EXACT LOCATION WITH CIVIL. H-20 RATED INSTALLATION & ACCESS COVER.
 5. COORDINATE WITH LOCAL UTILITY COMPANY FOR NEW BUILDING GAS METER. ROUTE 1/2" GAS PIPING UP EXTERIOR HALL TO BE ROUTED TO UNIT HEATERS.

ARCHITECT

THE WILSON GROUP
P O BOX 5510
CHARLOTTE, NC 28209
(704) 331-9747

PROJECT MANAGER | CIVIL ENGINEER
TALBERT & BRIGHT
4810 SHELLEY DRIVE
WILMINGTON, NC 28405
(910) 753-9390

STRUCTURAL ENGINEER
STEWART
101 N. TRYON ST., SUITE 1400
CHARLOTTE, NC 28202
(704) 909-3623

MECHANICAL, ELECTRICAL, PLUMBING & FIRE PROTECTION ENGINEER
SABER ENGINEERING
2923 S. TRYON ST., SUITE 280
CHARLOTTE, NC 28203
(704) 373-0088

REVISIONS

NO.	DATE	DESCRIPTION

DATE: AUGUST 2, 2019
PROJECT NUMBER: 9217-000

SHEET TITLE
PLUMBING HANGAR PLAN

SHEET NUMBER
P2

WE: 1023_P02.dwg, Revised By: andrew
Aug 13, 2019 - 10:50am