



THE WILSON GROUP  
- ARCHITECTS -

PO Box 5510 Charlotte, NC 28299  
704-331-9747 • www.twgarchitects.com

PROJECT MANAGER / CIVIL ENGINEER  
**TALBERT & BRIGHT**

4810 SHELLEY DRIVE  
WILMINGTON, NC 28405  
(910) 763-5350  
FIRM NO. : C-0713

STRUCTURAL ENGINEER  
**STEWART**

101 N. TRYON ST., SUITE 1400  
CHARLOTTE, NC 28202  
(704) 334-7925  
FIRM NO. : C-1051

FIRE PROTECTION, PLUMBING, MECHANICAL,  
& ELECTRICAL ENGINEER

**SABER ENGINEERING**

2923 S TRYON ST #200  
CHARLOTTE, NC 28203  
(704) 373-0068

WATER & SEWER ENGINEER

**McGILL ASSOCIATES**

712 S VILLAGE ROAD SW, SUITE 103  
SHALLOTTE, NC 28470  
(910) 765-5072

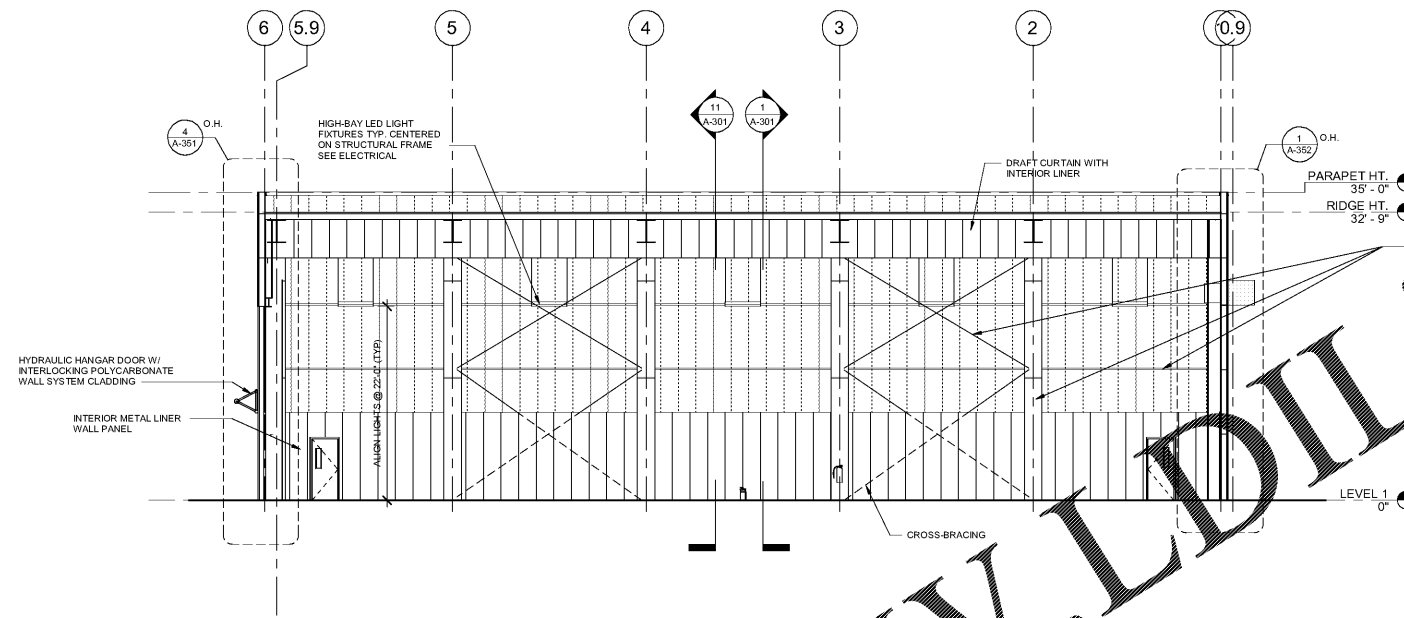
COPYRIGHT © 2019  
THE WILSON GROUP ARCHITECTS  
ALL RIGHTS RESERVED  
PRINTED OR ELECTRONIC DRAWINGS AND  
DOCUMENTATION MAY NOT BE REPRODUCED  
IN ANY FORM WITHOUT WRITTEN PERMISSION  
FROM THE WILSON GROUP ARCHITECTS

REVISIONS

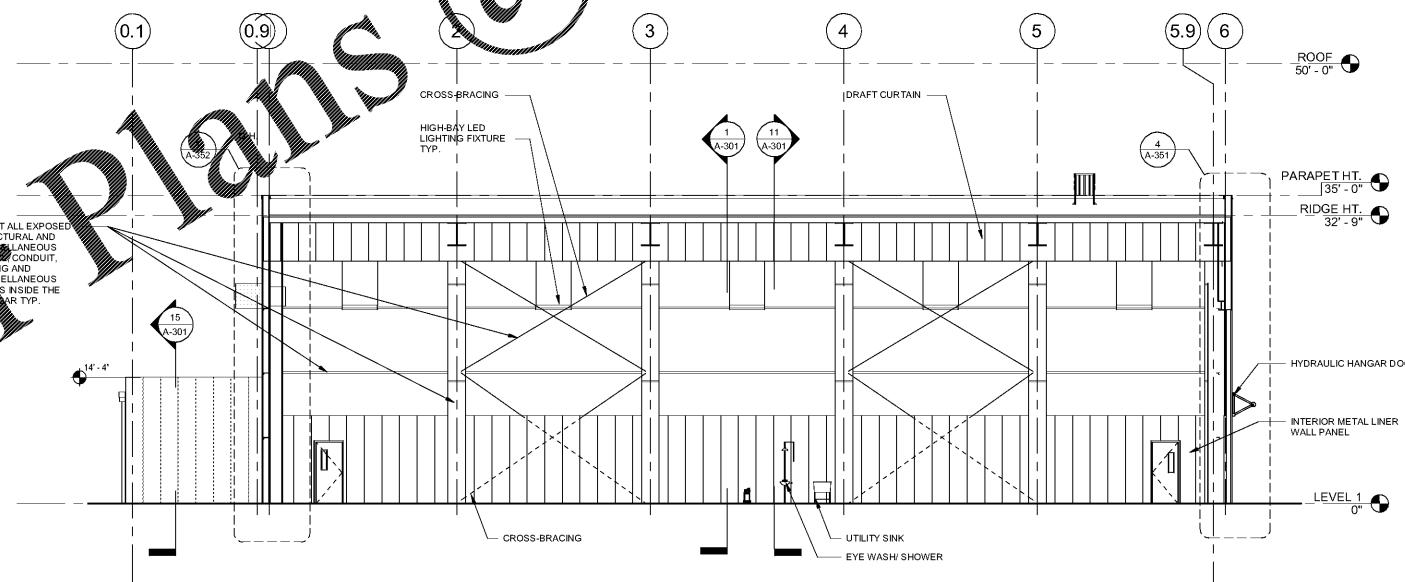
DATE 8/2/2019  
PROJECT NUMBER 9217-000

SHEET TITLE  
**ARCHITECTURAL  
BUILDING  
SECTIONS**

SHEET NUMBER  
**A-302**



11 ARCHITECTURAL BUILDING SECTION  
1/8" = 1'-0"



2 ARCHITECTURAL BUILDING SECTION  
1/8" = 1'-0"

Order Plans @ www.LDILine.com