



THE WILSON GROUP
ARCHITECTS

PO Box 5510 Charlotte, NC 28299
704-331-9747 • www.twgarchitects.com

PROJECT MANAGER / CIVIL ENGINEER
TALBERT & BRIGHT

4810 SHELLEY DRIVE
WILMINGTON, NC 28405
(910) 763-5350
FIRM NO.: C-0713

STRUCTURAL ENGINEER
STEWART

101 N. TRYON ST., SUITE 1400
CHARLOTTE, NC 28202
(704) 254-7925
FIRM NO.: C-1051

FIRE PROTECTION, PLUMBING, MECHANICAL,
& ELECTRICAL ENGINEER
SABER ENGINEERING

2923 S TRYON ST #200
CHARLOTTE, NC 28203
(704) 373-0068

WATER & SEWER ENGINEER
MCGILL ASSOCIATES
712 S VILLAGE ROAD SW, SUITE 103
SHALLOTTE, NC 28470
(910) 766-9072

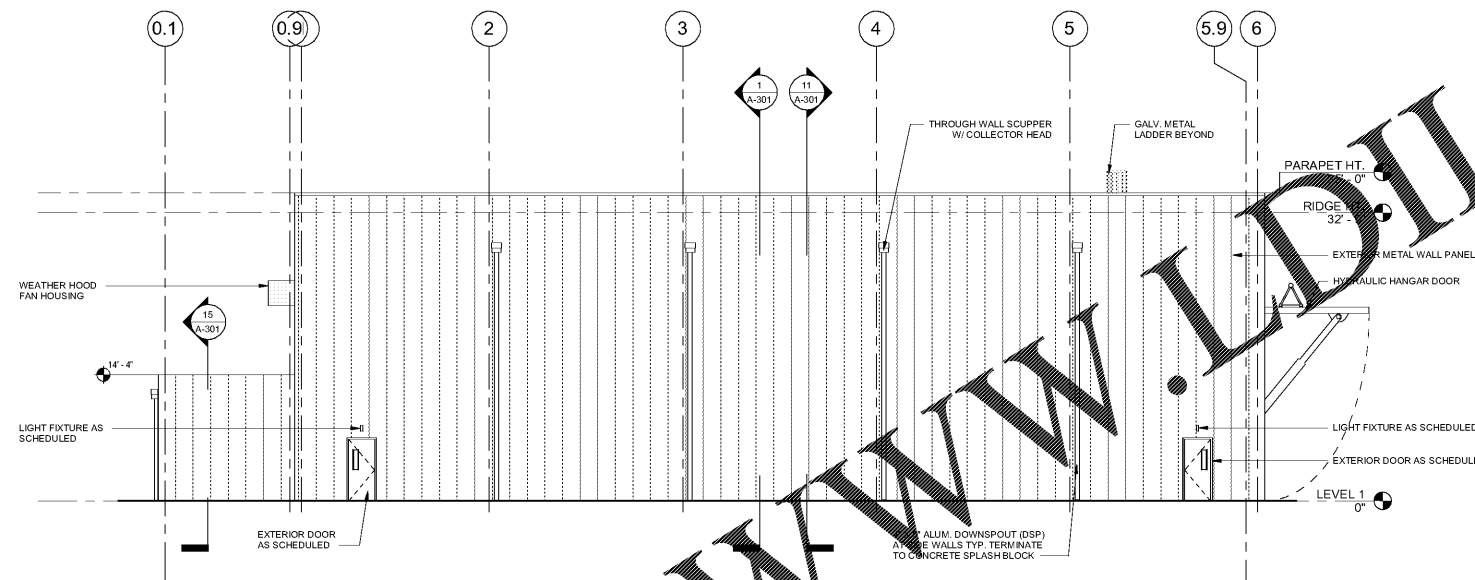
COPYRIGHT © 2019
THE WILSON GROUP ARCHITECTS
ALL RIGHTS RESERVED
PRINTED OR ELECTRONIC DRAWINGS AND
DOCUMENTATION MAY NOT BE REPRODUCED
IN ANY FORM WITHOUT WRITTEN PERMISSION
FROM THE WILSON GROUP ARCHITECTS

REVISIONS

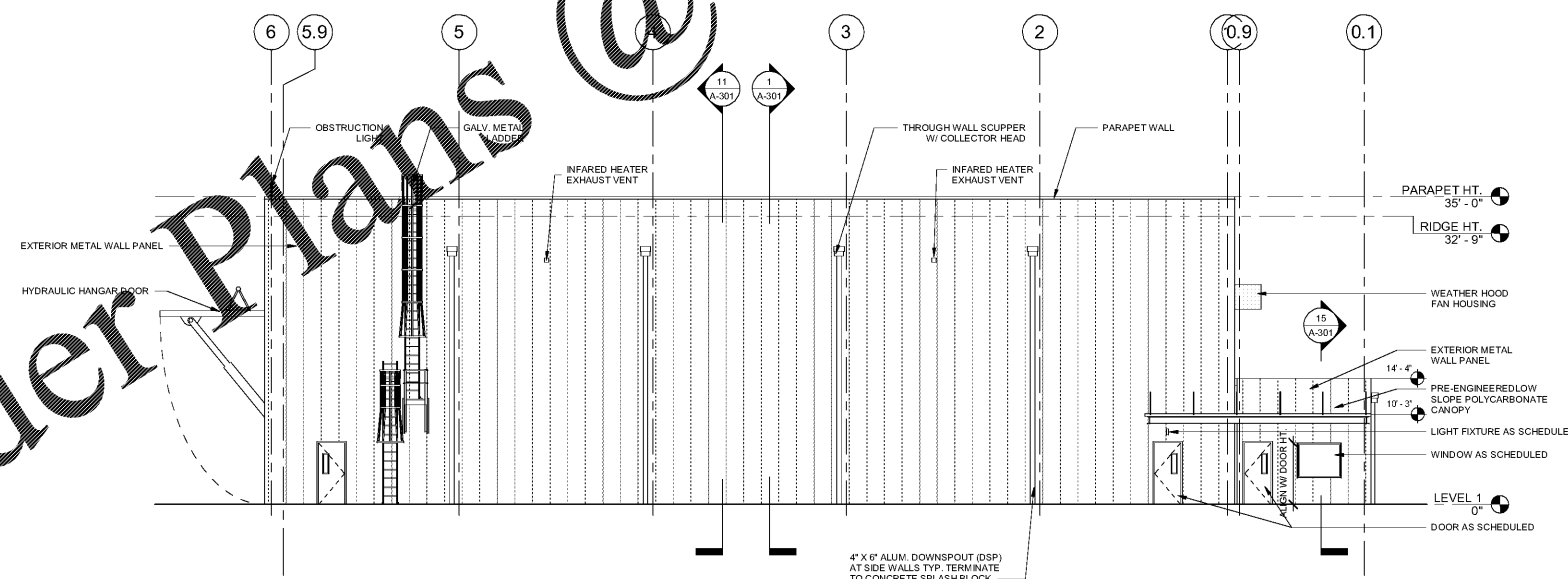
DATE 8/2/2019
PROJECT NUMBER 9217-000

SHEET TITLE
ARCHITECTURAL
ELEVATIONS

SHEET NUMBER
A-202



2 LEFT (SOUTHWEST) ELEVATION
1/8" = 1'-0"



1 RIGHT (NORTHEAST) ELEVATION
1/8" = 1'-0"