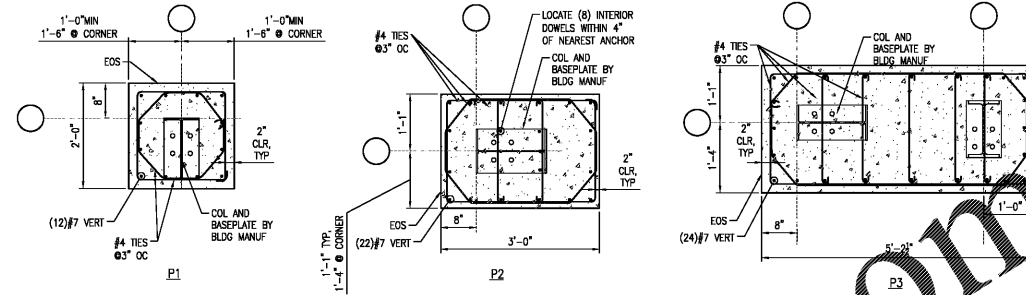
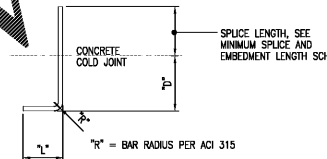


Order Plans @ WWW.WDILine.com



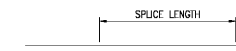
1 PEDESTAL PLAN NTS
S3.01 NOTES:
 1. COORDINATE PEDESTAL EXTENTS WITH METAL BUILDING SYSTEM MANUFACTURER. ADD ONE VERTICAL BAR EACH FACE FOR EACH 6" OR PARTIAL PEDESTAL EXTENSION.

BAR SIZE	LEG DIM, "L"	EMBEDMENT, "D"		
		f'c = 3,000 PSI	f'c = 4,000 PSI	f'c = 5,000 PSI
#3	6"	6"	6"	6"
#4	8"	8"	7"	6"
#5	10"	10"	9"	9"
#6	1'-0"	1'-0"	10"	9"
#7	1'-2"	1'-2"	1'-0"	11"
#8	1'-4"	1'-4"	1'-0"	1'-0"
#9	1'-6"	1'-6"	1'-3"	1'-2"
#10	1'-10"	1'-8"	1'-5"	1'-3"
#11	2'-0"	1'-10"	1'-7"	1'-5"



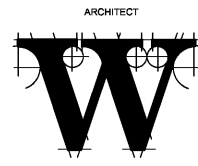
5 SCHEDULE NTS
S3.01 NOTES:
 1. SIDE COVER ON BARS MUST BE GREATER THAN 2 1/2". END COVER ON 90° HOOKED BARS MUST BE GREATER THAN 2".
 2. VALUES SHOWN ARE FOR NORMAL WEIGHT CONCRETE. FOR LIGHT WEIGHT CONCRETE, INCREASE THE "D" VALUES BY 30%.
 3. FOR EPOXY-COATED BARS, INCREASE THE "D" VALUES BY 20%.

BAR SIZE	CONCRETE REINFORCING SPLICES			
	f'c = 3,000 PSI	f'c = 4,000 PSI	f'c = 4,500 PSI	f'c = 5,000 PSI
#3	1'-10"	1'-7"	1'-6"	1'-5"
#4	2'-4"	2'-1"	2'-0"	1'-10"
#5	3'-0"	2'-7"	2'-6"	2'-4"
#6	3'-7"	3'-1"	2'-11"	2'-9"
#7	5'-2"	4'-6"	4'-3"	4'-1"
#8	5'-11"	5'-2"	4'-11"	4'-8"
#9	6'-6"	5'-10"	5'-6"	5'-3"
#10	7'-8"	6'-6"	6'-2"	5'-10"
#11	8'-4"	7'-3"	6'-11"	6'-6"



3 DETAIL NTS
S3.01 CONCRETE REINFORCING SPLICE SCHEDULE

NEW CORPORATE HANGAR
 4005 AIRPORT ROAD
 SOUTHPORT, NC 28461



THE WILSON GROUP
 P O BOX 5510
 CHARLOTTE, NC 28299
 (704) 331-6747

PROJECT MANAGER / CIVIL ENGINEER
TALBERT & BRIGHT
 4810 SHELLEY DRIVE
 WILMINGTON, NC 28405
 (910) 763-5350

STRUCTURAL ENGINEER
STEWART
 101 N. TRYON ST., SUITE 1400
 CHARLOTTE, NC 28202
 (704) 909-3823

MECHANICAL, ELECTRICAL, PLUMBING & FIRE PROTECTION ENGINEER
SABER ENGINEERING
 2823 S. TRYON ST., SUITE 280
 CHARLOTTE, NC 28203
 (704) 373-0066

REVISIONS

DATE AUGUST 8, 2019
 PROJECT NUMBER 9217-000

SHEET TITLE
FOUNDATION SECTIONS AND DETAILS

SHEET NUMBER
S3.01