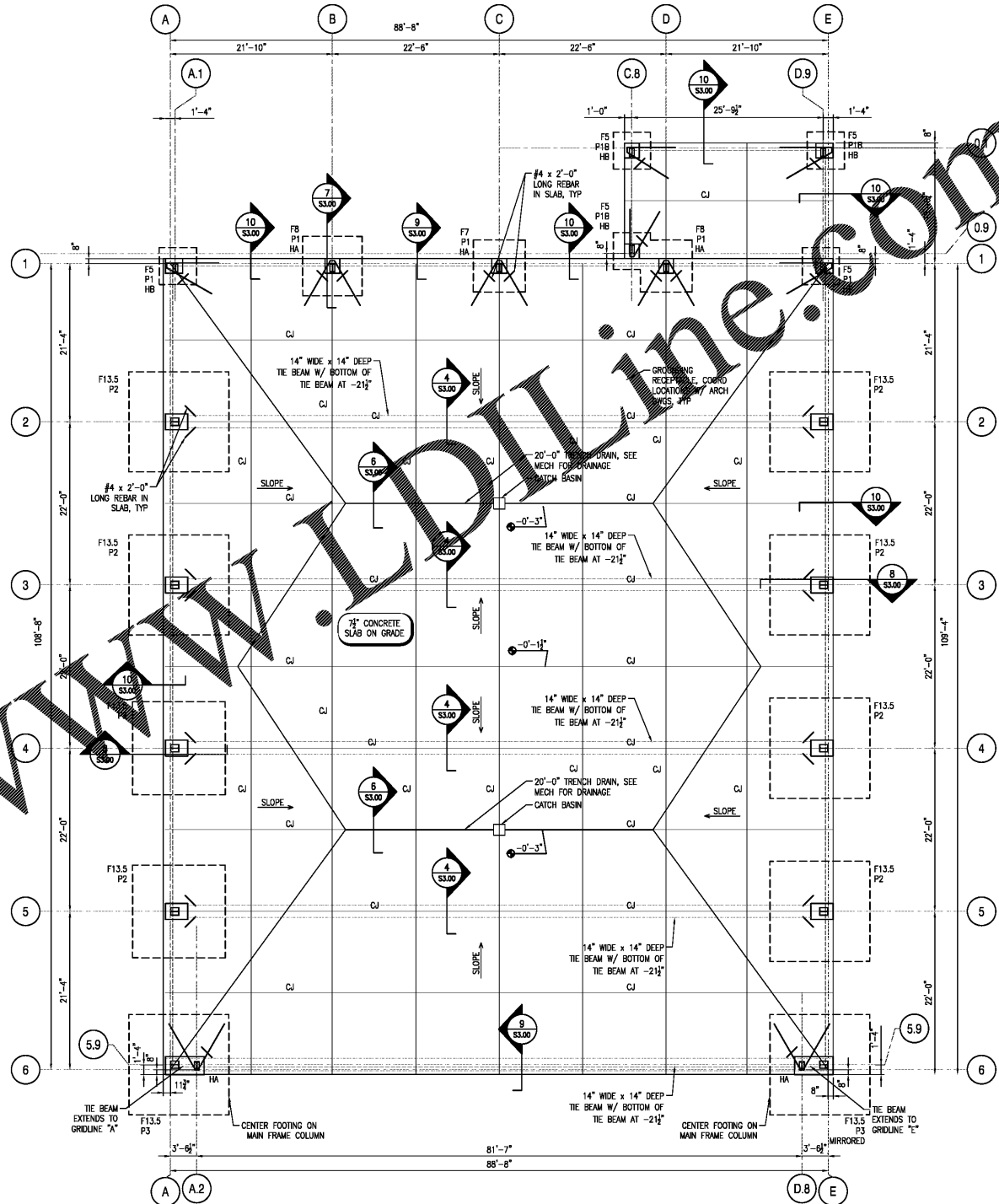


Order Plans @ www.dline.com

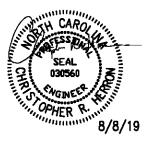


1 FOUNDATION PLAN
 1/8"=1'-0"
S1.00

NOTES:

- FOR GENERAL NOTES AND ABBREVIATIONS, SEE S0.01.
- SEE SHEET FOR FINISH FLOOR ELEVATION. ALL ELEVATIONS MEASURED FROM REFERENCE ELEVATION.
- TOP OF FOOTING ELEVATION 2'-0" BELOW FFE, UNO.
- #4# INDICATES FOOTING TYPE, SEE 2/S3.00.
- #4# INDICATES CONCRETE PEDESTAL, TOP OF PEDESTAL AT FFE UNO, TYP SEE S3.00 & S3.01.
- FOR TYPICAL SLAB CONSTRUCTION DETAILS, SEE 3/S3.00.
- #4# INDICATES HARPING ROD TYPE, SEE 3/S3.00.
- SEE ARCH AND ELECTRICAL DRAWINGS FOR 4" PVC CONDUIT STUB UPS CAST IN SLAB.
- FOOTING SIZES ARE BASED ON ASSUMED REACTIONS. FINAL FOOTING SIZES WILL BE PROVIDED BASED ON THE SUBMITTED PEAB SHOP DRAWINGS. CONTRACTOR TO PROVIDE A UNIT PRICE AT BID FOR A BLENDED COST PER CUBIC YARD OF CONCRETE FOOTING ADDED OR REDUCED. BLENDED RATE TO INCLUDE ALL COSTS ASSOCIATED WITH THE CHANGE IN FOOTING SIZE INCLUDING CONCRETE, REINFORCING, AND EXCAVATIONS.

NEW CORPORATE HANGAR
 4005 AIRPORT ROAD
 SOUTHPORT, NC 28461



ARCHITECT

THE WILSON GROUP
 P O BOX 5510
 CHARLOTTE, NC 28239
 (704) 331-8747

PROJECT MANAGER / CIVIL ENGINEER
TALBERT & BRIGHT
 4810 SHELLEY DRIVE
 WILMINGTON, NC 28405
 (910) 763-5350

STRUCTURAL ENGINEER
STEWART
 101 N. TRYON ST., SUITE 1400
 CHARLOTTE, NC 28202
 (704) 909-3823

MECHANICAL, ELECTRICAL, PLUMBING & FIRE PROTECTION ENGINEER
SABER ENGINEERING
 2823 S. TRYON ST., SUITE 280
 CHARLOTTE, NC 28203
 (704) 372-0068

REVISIONS

NO.	DATE	DESCRIPTION

DATE: AUGUST 8, 2019
 PROJECT NUMBER: 9217-000

SHEET TITLE:
FOUNDATION PLAN

SHEET NUMBER:
S1.00