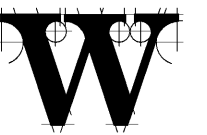




NEW CORPORATE HANGAR
 XXXX AIRPORT ROAD
 SOUTHPORT, NC 28461

FINAL DRAWINGS
 ISSUED FOR
 BIDDING

ARCHITECT



THE WILSON GROUP

P O BOX 5510
 CHARLOTTE, NC 28299
 (704) 331-9747

PROJECT MANAGER / CIVIL ENGINEER
TALBERT & BRIGHT

4810 SHELLEY DRIVE
 WILMINGTON, NC 28405
 (910) 763-5350

STRUCTURAL ENGINEER

STEWART

101 N. TRYON ST., SUITE 1400
 CHARLOTTE, NC 28202
 (704) 969-3523

MECHANICAL, ELECTRICAL, PLUMBING &
 FIRE PROTECTION ENGINEER

SABER ENGINEERING

2923 S. TRYON ST., SUITE 280
 CHARLOTTE, NC 28203
 (704) 373-0068

WATER & SEWER ENGINEER

MCGILL ASSOCIATES

712 VILLAGE ROAD SW, SUITE 103
 SHALLOTTE, NC 28470
 (910) 755-5872



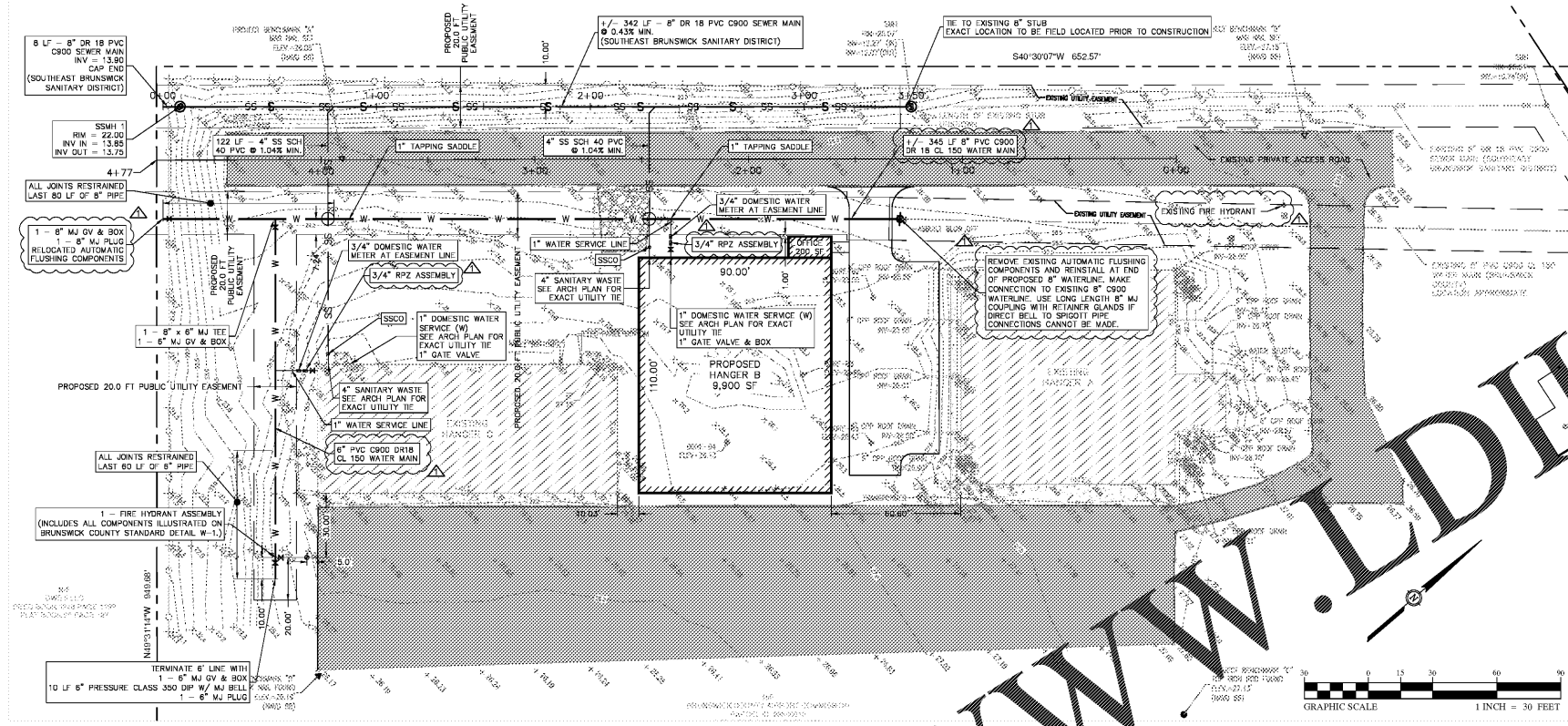
REVISIONS

- 1 REVISIONS PER BC ENGINEERING 6/21/29 COMMENTS.

DATE: JUNE 7, 2019
 PROJECT NUMBER: 9217-000

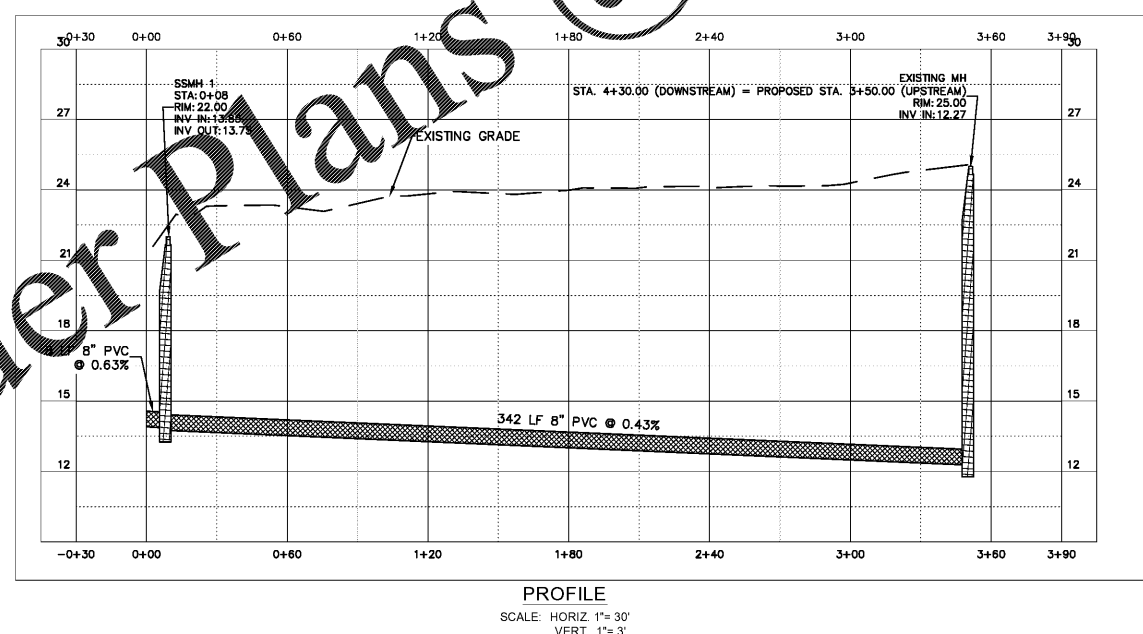
SHEET TITLE
**UTILITY PLAN &
 PROFILE SHEET**

SHEET NUMBER
WS-301



LEGEND - PROPOSED FEATURES

| LABEL | DESCRIPTION | SYMBOL |
|-------|-------------------|--------|
| W | WATER LINE | — W — |
| FS | FIRE SERVICE | — FS — |
| HYD | FIRE HYDRANT | ⊗ |
| WV | WATER VALVE | M |
| WM | WATER METER | ↑ |
| AVR | AIR RELEASE VALVE | • |
| RED | REDUCER | ↓ |
| FM | FORCE MAIN | — FM — |
| SSMH | SEWER MANHOLE | ⊙ |
| SSOD | SEWER CLEANOUT | ↑ |
| GS | GRAVITY SEWER | — GS — |
| | EASEMENT | --- |



Order Plans @

WWW.LDILine.com