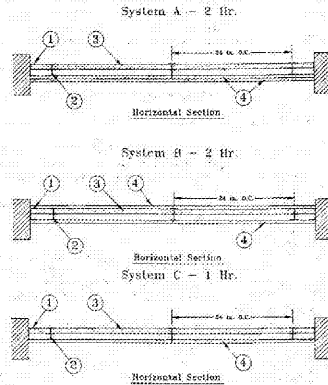


Order Plans @

BW-S-0001

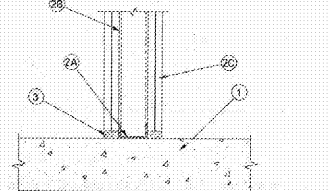
Design No. V433  
Nonbearing Wall Rating-1 or 2 Hr.



- Steel Framing Members (Floor, Side and Ceiling Runners)\*** — "T"-shaped runner, min 2-1/2 in. deep with unequal legs of 1 in. and min 2-3/16 in. fabricated from min 25 M50 galv steel. Runners positioned with soot leg toward finished side of wall. Runners attached to structural supports with steel fasteners located not greater than 2 in. from ends and not greater than 24 in. OC. Runners may be supplied with securement tabs for gypsum liner panels (refer to Item 3).  
DIETRICH INDUSTRIES INC. — Type 2-1/2 in. J-Track-25, 2-1/2 in. J-Track-20, 4 in. J-Track-25, 4 in. J-Track-20, 6 in. J-Track-25, or 6 in. J-Track-20.  
PHILLIPS MFG CO. — Type 2-1/2 in. J-Track-25, 2-1/2 in. J-Track-20, 4 in. J-Track-25, 4 in. J-Track-20, 6 in. J-Track-25, or 6 in. J-Track-20.
- Steel Framing Members (Steel Studs)\*** — "T"-shaped studs fabricated from min 25 M50 galv steel, min 2-1/2 in. deep, 1-1/2 in. wide. Studs contain 3/4 in. wide by 2-1/4 in. high holding tabs spaced 2-3/4 in. OC. Cut to lengths 5/8 in. less than floor-to-ceiling height and spaced 24 in.  
DIETRICH INDUSTRIES INC. — Type 2-1/2 in. I-Stud-25, 2-1/2 in. I-Stud-20, 4 in. I-Stud-25, 4 in. I-Stud-20, 6 in. I-Stud-25, 6 in. I-Stud-20, or 6 in. I-Stud-18.  
PHILLIPS MFG CO. — Type 2-1/2 in. I-Stud-25, 2-1/2 in. I-Stud-20, 4 in. I-Stud-25, 4 in. I-Stud-20, 6 in. I-Stud-25, 6 in. I-Stud-20, or 6 in. I-Stud-18.
- Gypsum Board\*** — Gypsum liner panels, nom 1/2 in. thick, 24 in. wide. Panels cut max. 4 in. less in length than face to ceiling height. Vertical edges inserted in holding tabs of "T"-shaped runners. Free edge of end panels attached to long leg of "T"-runners with 1 in. long Type 5 self-drilling, self-tapping bugle head steel screws spaced 24 in. OC. Face layer installed vertically to steel studs with 1-5/8 in. long Type 5 self-drilling, self-tapping bugle head steel screws spaced 24 in. OC. Face layer installed horizontally to steel studs with 1-5/8 in. long Type 5 self-drilling, self-tapping bugle head steel screws spaced 24 in. OC, staggered 12 in. from base layer screws. Additionally, Type G screws to be installed at the center of each stud cavity, 1-1/2 in. from both sides of the horizontal joint. For the 1/2 in. thick and 5/8 in. thick boards, the Type G screw length shall be 1-1/4 in. and 1-1/2 in. long, respectively.  
BFB AMERICA INC. — 1/2 in. thick ProRoc Type C, 5/8 in. thick ProRoc Type C, or 5/8 in. thick ProRoc Type X.  
BFB CANADA INC. — 5/8 in. thick ProRoc Type X or ProRoc Type Abuse-Resistant.  
For use with Type FSW liner panels - Gypsum panels, 1/2 in. thick, 4 ft wide wallboard applied vertically in two layers. Base layer attached to studs with 1 in. long Type 5 self-drilling, self-tapping bugle head steel screws spaced 24 in. OC. Face layer attached to studs and channel track with 1-5/8 in. long Type 5 self-drilling, self-tapping bugle head steel screws spaced 12 in. along the edges and in the field of the boards, staggered from screw in inner layer. Joints between inner and outer layers staggered. Outer layer joints covered with paper tape and joint compound.  
BFB AMERICA INC. — ProRoc Type C.  
CANADIAN GYPSUM COMPANY — Type C or IP-X2.  
NATIONAL GYPSUM CO. — Types PSK-C, PSW-C, PSW-C, FSW-C, FSW-C.  
UNITED STATES GYPSUM CO. — Type C or IP-X2.  
USG MEXICO S A DE C V — Type C or IP-X2.  
For use with Type SLX liner panels - Gypsum panels, nom 1/2 in. thick, 4 ft wide, applied vertically in two layers. Base layer attached to studs with 1 in. long Type 5 self-drilling, self-tapping bugle head steel screws spaced 24 in. OC. Face layer attached to studs with 1-5/8 in. long Type 5 self-drilling, self-tapping bugle head steel screws spaced 12 in. along the edges and in the field of the boards, staggered from screw in inner layer. Joints between inner and outer layers staggered.  
CANADIAN GYPSUM COMPANY — Type C or IP-X2 or IP-X2.  
UNITED STATES GYPSUM CO. — Type C, IP-X2 or IP-X2.  
USG MEXICO S A DE C V — 1/2 in. Types C, IP-X2 or WRC, 5/8 in. Types AR, C, FRX-C, IP-X1, IP-X2, SCX, SDX, WRC, WRC.  
For use with Type SLX liner panels - Gypsum panels, 1/2 in. thick, 4 ft wide, applied in two layers. Base layer attached at right angles to studs and side "T" runners with 1 in. long Type 5 self-tapping bugle head steel screws starting at 2 in. from the floor and ceiling runners and spaced a maximum 24 in. OC along the vertical edges and in the field of the boards. Face layer oriented parallel to studs and side "T" runners and attached with 1-5/8 in. long Type 5 self-tapping steel screws, starting at 3 in. from the floor and ceiling runners and spaced a maximum 12 in. OC along the vertical edges and in the field of the boards. Face layer joints covered with paper tape and two coats of joint compound. Exposed screw heads covered with two coats of joint compound.  
AMERICAN GYPSUM CO. — Types AG-C, AG-C.  
TEMPLE-INLAND FOREST PRODUCTS CORP. — Type TP-8.

W-L-1001

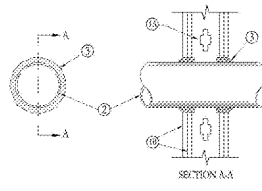
System No. BW-S-0001  
Assembly Rating — 1 and 2 Hr (See Item 2)  
I Rating at Ambient — Less than 1 CFM/Lin Ft  
I Rating at 400° F — Less than 1 CFM/Lin Ft  
Joint Width — 3/8 in. Max



- Floor Assembly** — Min 4-1/2 in. thick reinforced lightweight or normal weight (100-150 pcf) structural concrete. Floor may also be constructed of any 6 in. thick UL Classified hollow-core Precast Concrete Units\*.  
See Precast Concrete Units category in the Fire Resistance Directory for names of manufacturers.
- Wall Assembly** — The 1 or 2 hr fire-rated gypsum board/steel stud wall assembly shall be constructed of the materials and in the manner specified in the individual U400 or V400 Series Wall or Partition Design in the UL Fire Resistance Directory. In addition, the wall may incorporate a head-of-wall joint system constructed as specified in the HW Series Joint Systems in the UL Fire Resistance Directory. The wall shall include the following construction features:  
A. **Steel Floor Runner** — Floor runners of wall assembly shall consist of min No. 25 gauge galv steel channels sized to accommodate steel studs (Item 2B). Floor runners to be provided with min 3-1/4 in. flanges. Runners secured with steel fasteners spaced 12 in. OC.  
B. **Studs** — Steel studs to be min 1-1/2 in. wide. Studs cut 1/2 to 3/4 in. less in length than height with bottom nesting in, resting on and fastened to floor runners with short rod steel screws. Stud spacing not to exceed 24 in. OC.  
C. **Gypsum Board\*** — Gypsum board installed to a min total thickness of 5/8 or 1-1/4 in. on each side of wall for a 1 or 2 hr rated wall, respectively. Wall to be constructed as specified in the individual U400 or V400 Series Design in the UL Fire Resistance Directory, except that a max 3/4 in. gap shall be maintained between the bottom of gypsum board and top of concrete floor. The hourly fire rating of the joint system is equal to the hourly fire rating of the wall.  
D. **Fill, Void or Cavity Material\*** Sealant — Max separation between top of floor and bottom of gypsum board to 3/4 in. For 1 and 2 hr rated wall assemblies, min 5/8 in. or 1-1/4 in. thickness of fill material, respectively installed on each side of the wall between the bottom of the gypsum board and the top of the concrete floor, flush with each surface of the wall.  
HULTI CONSTRUCTION CHEMICALS, DIV OF HULTI INC. — CP601S Elastomeric Firestop Sealant, CP606 Flexible Firestop Sealant or PS-ONE Sealant.  
\*Bearing the UL Classification Mark.

BW-S-0001

System No. BW-S-0001  
I Rating at Ambient — Less than 1 CFM/Lin Ft  
I Rating at 400° F — Less than 1 CFM/Lin Ft  
Joint Width — 3/8 in. Max



- Floor Assembly** — Min 4-1/2 in. thick reinforced lightweight or normal weight (100-150 pcf) structural concrete. Floor may also be constructed of any 6 in. thick UL Classified hollow-core Precast Concrete Units\*.  
See Precast Concrete Units category in the Fire Resistance Directory for names of manufacturers.
- Wall Assembly** — The 1 or 2 hr fire-rated gypsum board/steel stud wall assembly shall be constructed of the materials and in the manner specified in the individual U400 or V400 Series Wall or Partition Design in the UL Fire Resistance Directory. In addition, the wall may incorporate a head-of-wall joint system constructed as specified in the HW Series Joint Systems in the UL Fire Resistance Directory. The wall shall include the following construction features:  
A. **Steel Floor Runner** — Floor runners of wall assembly shall consist of min No. 25 gauge galv steel channels sized to accommodate steel studs (Item 2B). Floor runners to be provided with min 3-1/4 in. flanges. Runners secured with steel fasteners spaced 12 in. OC.  
B. **Studs** — Steel studs to be min 1-1/2 in. wide. Studs cut 1/2 to 3/4 in. less in length than height with bottom nesting in, resting on and fastened to floor runners with short rod steel screws. Stud spacing not to exceed 24 in. OC.  
C. **Gypsum Board\*** — Gypsum board installed to a min total thickness of 5/8 or 1-1/4 in. on each side of wall for a 1 or 2 hr rated wall, respectively. Wall to be constructed as specified in the individual U400 or V400 Series Design in the UL Fire Resistance Directory, except that a max 3/4 in. gap shall be maintained between the bottom of gypsum board and top of concrete floor. The hourly fire rating of the joint system is equal to the hourly fire rating of the wall.  
D. **Fill, Void or Cavity Material\*** Sealant — Max separation between top of floor and bottom of gypsum board to 3/4 in. For 1 and 2 hr rated wall assemblies, min 5/8 in. or 1-1/4 in. thickness of fill material, respectively installed on each side of the wall between the bottom of the gypsum board and the top of the concrete floor, flush with each surface of the wall.  
HULTI CONSTRUCTION CHEMICALS, DIV OF HULTI INC. — CP601S Elastomeric Firestop Sealant, CP606 Flexible Firestop Sealant or PS-ONE Sealant.  
\*Bearing the UL Classification Mark.



NEW CORPORATE HANGAR  
4005 AIRPORT ROAD  
SOUTHPORT, NC 28461



PROJECT MANAGER / CIVIL ENGINEER  
**TALBERT & BRIGHT**  
4810 SHELLEY DRIVE  
WILMINGTON, NC 28405  
(910) 763-5350  
FRM NO. - C-0713

STRUCTURAL ENGINEER  
**STEWART**  
101 N. TRYON ST., SUITE 1400  
CHARLOTTE, NC 28202  
(704) 254-7925  
FRM NO. - C-1051

FIRE PROTECTION, PLUMBING, MECHANICAL, & ELECTRICAL ENGINEER  
**SABER ENGINEERING**  
2923 S TRYON ST #200  
CHARLOTTE, NC 28203  
(704) 373-0068

WATER & SEWER ENGINEER  
**McGILL ASSOCIATES**  
712 S HILLGATE ROAD SW, SUITE 103  
SHALLOTTE, NC 28470  
(910) 768-5072

COPYRIGHT © 2019  
THE WILSON GROUP ARCHITECTS  
ALL RIGHTS RESERVED  
PRINTED OR ELECTRONIC DRAWINGS AND DOCUMENTATION MAY NOT BE REPRODUCED IN ANY FORM WITHOUT WRITTEN PERMISSION FROM THE WILSON GROUP ARCHITECTS

REVISIONS

DATE 8/2/2019  
PROJECT NUMBER 9217-000  
SHEET TITLE UL ASSEMBLIES

SHEET NUMBER  
**G-006**