

ELECTRICAL LEGEND	
SYM	DESCRIPTION
\$	20 AMP, 125V, SINGLE POLE SWITCH, MOUNT 48" AFF TO TOP OF PLATE
\$F	CEILING FAN CONTROL, MOUNT 48" AFF TO TOP OF PLATE
\$M	IN-WALL SWITCH SENSOR, DUAL TECHNOLOGY (PIR AND ULTRASONIC), COVER PLATE, PROGRAM AS OCCUPANCY, MOUNT 48" AFF TO TOP OF PLATE
\$MD	IN-WALL SENSOR WITH DIMMING - SINGLE-POLE/MULTI-LOCATION SWITCH WITH OCCUPANCY/VACANCY SENSOR (PROGRAM AS OCCUPANCY), MOUNT 48" AFF TO TOP OF PLATE
\$D	SLIDE DIMMER SWITCH WITH ON/OFF, 0-10 DIMMING
⊖	DUPLEX RECEPTACLE, 20 AMP, 125V, 3 WIRE, MOUNT 18" AFF UNLESS NOTED OTHERWISE
⊖	DUPLEX RECEPTACLE SAME AS ABOVE EXCEPT MOUNTED 42" AFF OR 6" ABOVE BACK SPLASH
⊖	DOUBLE DUPLEX RECEPTACLE, 20 AMP, 125V, 3 WIRE, MOUNT 18" AFF UNLESS NOTED OTHERWISE
⊖ GF	DUPLEX GROUND FAULT RECEPTACLE, 20 AMP, 120V, MOUNT 18" AFF UNLESS NOTED OTHERWISE
US	UNSWITCHED LIGHT FIXTURE
AFF	ABOVE FINISHED FLOOR
WP	CLEAR WEATHER PROOF VERTICAL RAINLIGHT WHILE IN USE RECEPTACLE COVER
⊙	CEILING MOUNTED OCCUPANCY SENSOR, 1000 SQUARE FEET COVERAGE
⊞	1 POWER PACK
Z O X	2 X 4 LIGHT FIXTURE
Z X	2 X 2 LIGHT FIXTURE
Z X	4 FOOT STRIP LIGHT FIXTURE
Z X	2 FOOT STRIP LIGHT FIXTURE
Z X	TWO HEAD FLOODLIGHT
Z X	JUNCTION BOX IN CEILING FOR INSTALLATION OF CEILING MOUNTED LIGHT FIXTURE
Z O X	LIGHT FIXTURE ANNOTATION - Z INDICATES FIXTURE TYPE, X INDICATES CIRCUIT NUMBER
⊞	COMBINATION EXIT SIGN/BATTERY LIGHT
⊞	REMOTE HEAD
⊞	EMERGENCY BATTERY LIGHT
⊞	CEILING FAN PROVIDED BY OWNER, E.C. TO INSTALL JUNCTION BOX FOR CEILING FAN IN CEILING
⊞	PENDANT LIGHT FIXTURE PROVIDED BY OWNER, E.C. TO INSTALL JUNCTION BOX FOR PENDANT IN CEILING
—	ELECTRICAL RACEWAY
—	HOMERUN TO PANEL BOARD
—	LOW VOLTAGE LIGHTING CONTROL CABLING
—	PANELBOARD - SEE SCHEDULE FOR TYPE & A.I.C RATINGS
⊞	PHOTOELECTRIC CELL
⊞	EXHAUST FAN PROVIDED BY MECHANICAL CONTRACTOR
∇	COMMUNICATIONS OUTLET - E.C. SHALL INSTALL BOX AND CONDUIT, RUN 1" C W/ PULL CORD AND BUSHING FROM TELEPHONE SERVICE ENTRANCE TO OUTLET, WIRING BY OTHERS.
⊞	JUNCTION BOX
⊞	HEAVY DUTY FUSED SAFETY SWITCH, SEE NOTES AS REQUIRED, USE NEMA 1 ENCLOSURES FOR FOR INDOOR APPLICATIONS AND NEMA 3R FOR OUTDOOR APPLICATIONS

+ COLOR OF SWITCHES, RECEPTACLES AND COVER PLATES TO BE SELECTED BY THE ARCHITECT.  
TYPE OF COVER PLATE (STAINLESS STEEL, PLASTIC, NYLON) TO BE SELECTED BY THE ARCHITECT.

**2 ELECTRICAL LEGEND**  
E0.1 SCALE: NONE

LIGHTING FIXTURE SYMBOL 'A'	LIGHTING FIXTURE SYMBOL 'B'	LIGHTING FIXTURE SYMBOL 'C'	LIGHTING FIXTURE SYMBOL 'D'	LIGHTING FIXTURE SYMBOL 'D1'
LIGHTING FIXTURE SYMBOL 'G'	LIGHTING FIXTURE SYMBOL 'H'	LIGHTING FIXTURE SYMBOL 'I'	LIGHTING FIXTURE SYMBOL 'J'	

LIGHTING FIXTURE SCHEDULE										
SYM	MFR	CATALOG #	LAMP		BALLAST		VOLT-AMPS	VOLTAGE	MTD HEIGHT	DESCRIPTION
			NO.	TYPE	NO.	TYPE				
A	METALUX ACUTY CREE	22FP3235C SURFACE MOUNT KIT-- FPSURF22	1	LED 3417 LUMENS 3500K, 80 CRI	-	-	29.4	UNIVERSAL 120V/277V	SURFACE MTD TO GYPSUM BOARD CEILING W/SURFACE KIT	2'X2' LED FLAT PANEL LIGHT FIXTURE, 3417 LUMENS, STANDARD 0-10V DIMMING DRIVER (10% TO 100% DIMMING) PROVIDE SURFACE MOUNTING KIT FOR GYPSUM BOARD CEILINGS
B	METALUX ACUTY CREE	24FP4735C SURFACE MOUNT KIT-- FPSURF24	1	LED 4990 LUMENS 3500K, 80 CRI	-	-	40.4	UNIVERSAL 120V/277V	SURFACE MTD TO GYPSUM BOARD CEILING W/SURFACE KIT	2'X4' LED FLAT PANEL LIGHT FIXTURE, 4990 LUMENS, STANDARD 0-10V DIMMING DRIVER (10% TO 100% DIMMING) PROVIDE SURFACE MOUNTING KIT FOR GYPSUM BOARD CEILINGS
C	CEILING MOUNTED HISTORICAL TYPE LIGHT FIXTURE SELECTED BY OWNER. E.C. WILL INSTALL JUNCTION BOX FLUSH IN CEILING.									
D	METALUX ACUTY CREE	2BCLD-LD4-16SL-F-UNV-L835-CD1	1	LED 1600 LUMENS 3500K, 85 CRI	-	-	19.0	UNIVERSAL 120V/277V	SURFACE MTD TO WALL ABOVE MIRROR	2 FT LED WALL BRACKET LIGHT FIXTURE, WHITE END PLATES, FROST ACRYLIC OPAL WHITE LENS, STANDARD 0-10V DIMMING DRIVER (10% TO 100% DIMMING)
D1	METALUX ACUTY CREE	4BCLD-LD4-32SL-F-UNV-L835-CD1	1	LED 3200 LUMENS 3500K, 85 CRI	-	-	32	UNIVERSAL 120V/277V	SURFACE MTD TO WALL ABOVE DOOR FRAME OR MOUNTED 8'-0" AFF	4 FT LED WALL BRACKET LIGHT FIXTURE, WHITE END PLATES, FROST ACRYLIC OPAL WHITE LENS, STANDARD 0-10V DIMMING DRIVER (10% TO 100% DIMMING)
G	ANP LIGHTING ARCHITECT APPROVED EQUALS ONLY	A814 M016LD N W 40K RTC 120 E8 XX	1	LED 4000 LUMENS 4000K, 80 CRI	1	REMOTE DRIVER HOUSING	16	120	SURFACE MTD TO EXTERIOR WALL - HEIGHT BY ARCHITECT	RLM ANGLE SHADE WITH GOOSENECK MOUNT, LED, 16 WATTS SHEPHERD HOOK MOUNTING ARM, FINISH SELECTION BY ARCHITECT, UL LISTED WET LOCATION
⊞		REFER TO SPECS AS A PERFORMANCE SPEC	1	LED LAMP HEADS	-	-	1.5	120/277 DUAL	MOUNTED TO WALL 7'-8" AFF OR ABOVE DOOR FRAME	EMERGENCY BATTERY LIGHT, (2) LED LAMPS, HIGH IMPACT IMPACT THERMOPLASTIC HOUSING, FINISH WHITE
⊞		REFER TO SPECS AS A PERFORMANCE SPEC	2	LED LAMP HEADS	-	-	2.2	120/277 DUAL VOLTAGE	MOUNT TO CEILING OR WALL ABOVE DOOR FRAME	LED EXIT SIGN/BATTERY LIGHT, 25 FT EGRESS COVERAGE, RED LETTERS, WHITE THERMOPLASTIC HOUSING, SNAP-IN CHEVRON DIRECTIONAL INDICATORS, SELF DIAGNOSTICS, REMOTE CAPACITY, MAINTENANCE-FREE SEALED NICKEL CADMIUM BATTERY
⊞		REFER TO SPECS AS A PERFORMANCE SPEC	1	LED 90 LUMENS	-	-	1.25	120/277 DUAL VOLTAGE	MOUNT TO EXTERIOR WALL ABOVE DOOR FRAME	LED REMOTE HEAD, ALUMINUM HOUSING WITH BLACK FINISH, UL LISTED WET LOCATION. NOTE: REMOTE HEAD WILL BE OFF DURING NORMAL OPERATION AND WILL BE ACTIVATED BY POWER FAILURE.

**EQUAL LIGHT MANUFACTURER NOTE**

THE LIGHTING FIXTURES INDICATED WITHIN THIS FIXTURE SCHEDULE ONLY INDICATE THE MINIMAL QUALITY STANDARDS THAT ARE REQUIRED FOR THE FIXTURES THAT ARE TO BE INSTALLED WITHIN THIS FACILITY. ALL MANUFACTURERS THAT PROVIDE A FIXTURE EQUAL TO THE DESIGN BASIS FIXTURES ARE QUALIFIED TO SUBMIT THE PRODUCT FOR EVALUATION. A POINT X POINT EVALUATION IS REQUIRED TO PROVE THE EQUAL PERFORMANCE.  
ALL LIGHTING FIXTURES INDICATED ON THE LIGHT FIXTURE SCHEDULE (WITH THE EXCEPTION OF TYPES R, T, U AND THE COLD WEATHER (BT) SIGN) MATCH THE SPECIFIED LIGHT FIXTURES INSTALLED IN PHASE 1. LIGHT FIXTURES TYPE R, T, U AND THE EXIT SIGN (BT) AND EQUIVALENT FIXTURE IN PHASE 1. SELECTION OF LIGHT FIXTURES THAT MATCH THOSE INSTALLED IN PHASE 1 WILL MAINTAIN A UNIFORM LOOK THROUGH OUT THE PROJECT.

**1 LIGHT FIXTURE SCHEDULE**  
E0.1 SCALE: NONE

**ELECTRICAL SYSTEM AND EQUIPMENT**  
METHOD OF COMPLIANCE

Energy Code:  PRESCRIPTIVE  PERFORMANCE  
ASHRAE 90.1:  PRESCRIPTIVE  PERFORMANCE

**LIGHTING SCHEDULE**

lamp type required in fixture See Lighting Schedule On Dwg. E0.1  
number of lamps in fixture \_\_\_\_\_  
ballast type used in the fixture \_\_\_\_\_  
number of ballast in fixture \_\_\_\_\_  
total wattage per fixture \_\_\_\_\_  
total interior wattage specified vs allowed SEE EXCEPTION BELOW  
(whole building or space by space)  
total exterior wattage specified vs allowed SEE EXCEPTION BELOW

**ADDITIONAL PRESCRIPTIVE COMPLIANCE**

- C406.2 More Efficient HVAC Equipment Performance
- C406.3 Reduced Lighting Power Density
- C406.4 Enhanced Digital Lighting Controls
- C406.5 On-Site Renewable Energy
- C406.6 Dedicated Outdoor Air System
- C406.7 Reduced Energy Use in Service Water Heating

**DESIGNER STATEMENT:**

To the best of my knowledge and belief, the design of this building complies with the thermal envelope requirements of the North Carolina State Building Code, 2018 Energy Conservation Code.

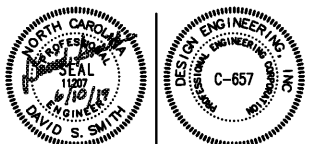
NAME: DAVID S. SMITH  
TITLE: ELECTRICAL ENGINEER

EXCEPTION TO ENERGY CODE - CERTIFIED HISTORIC BUILDINGS ARE EXEMPT FROM ENERGY CODE PER NCSBC ENERGY CODE 101.4.2

**3 ENERGY CODE**  
E0.1 SCALE: NONE

	2198 East Holly Grove Road P.O. Box 1256 Lexington, N.C. 27289 Design Engineering, Inc. 336/224-0100 336/224-0099 (fax)
--	---

**HISTORIC  
SPENCER  
SHOPS  
YARD OFFICE**



MCS DRAWN BY DSS CHECKED BY APRIL, 2018 DATE	SHEET NO. <b>E0.1</b> OF 4
---	----------------------------------