

PHILLIPS

KEYPLAN

CONSULTANT



PROFICIENT ENGINEERING
6991 Peachtree Industrial Blvd Building 700
Peachtree Corners, Georgia 30092
404.333.9759
PROJECT # 110288

SEAL



ISSUE & REVISION RECORD

#	DATE	DESCRIPTION
1	06.10.2019	30% DESIGN REVIEW SET
2	08.15.2019	80% REVIEW SET
3	08.23.2019	PERMIT SET

This document is © Phillips Partnership, PC and is considered an Instrument of Service and is solely for use with respect to the project as indicated herein. All rights reserved. This document may not be reproduced without the prior written consent of Phillips Partnership, PC.

PROJECT

Fairfield
BY MARRIOTT
INN & SUITES
DAWSONVILLE, GEORGIA

PROTOTYPE VERSION 2016
REV 7.12.21.16

4 STORY, 92 UNITS
w/ INDOOR POOL

FAIRFIELD
DAWSON FOREST ROAD
DAWSONVILLE, GA
30534

CLIENT

RIMROCK COMPANIES
10000 RIVERSIDE AVE
SUITE 32201
JACKSONVILLE, FL 32204

PHILLIPS JOB NUMBER 1972101

ISSUE DATE 08/23/2019

DRAWN BY/CHECKED BY SA MR

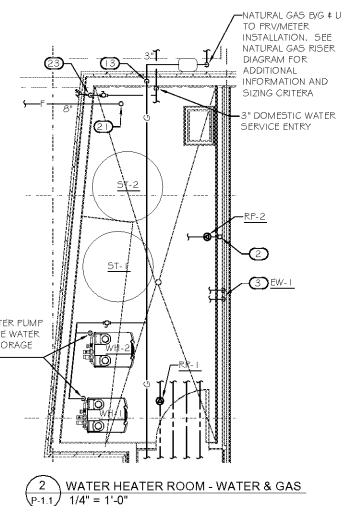
DRAWING TITLE
FLOOR PLAN LEVEL 1 -
WATER & GAS

SHEET NUMBER

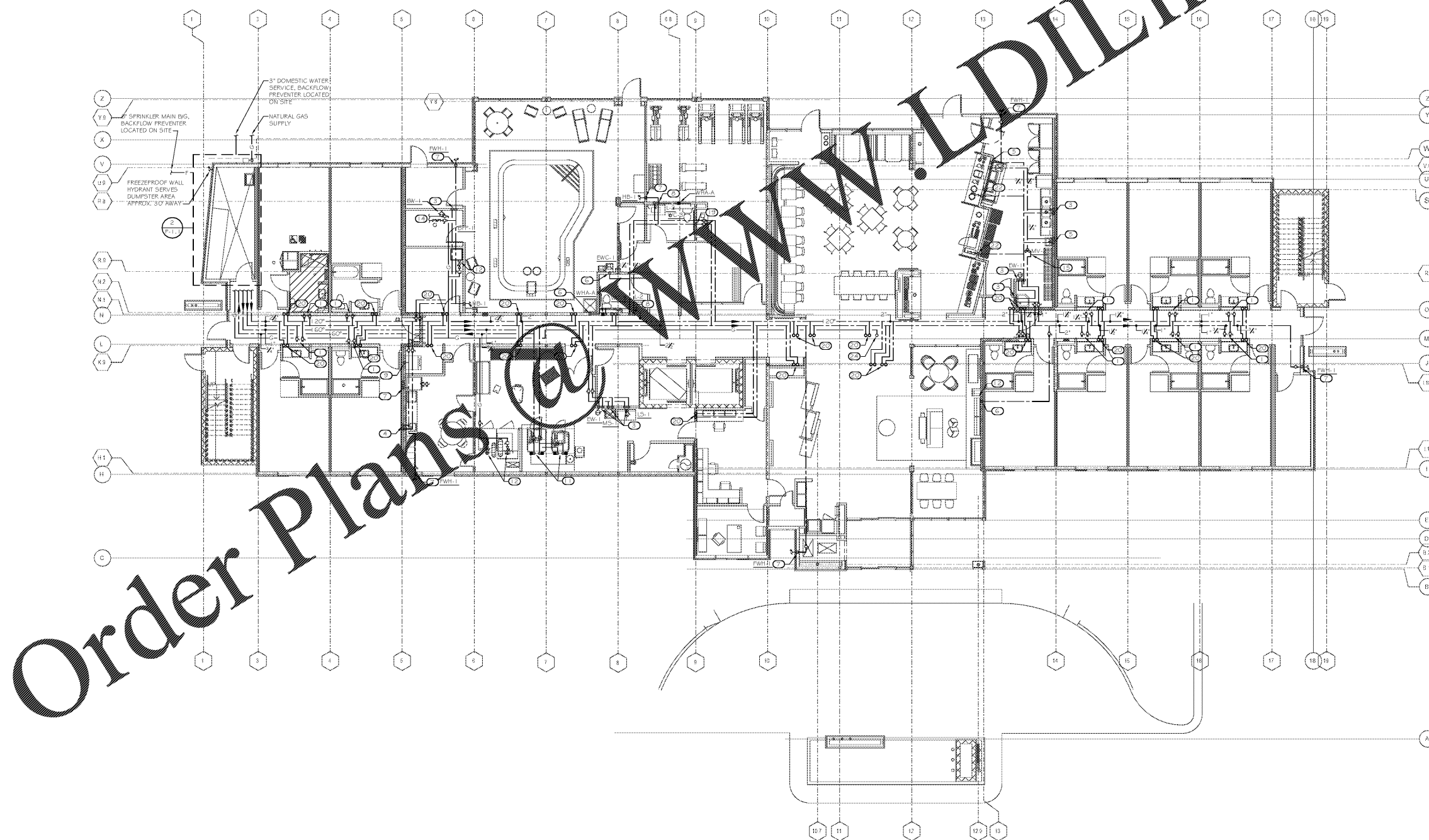
P-1.1

5901 PEACHTREE DUNWOODY RD.
BUILDING A, SUITE 450
ATLANTA, GEORGIA 30328

PHILLIPS PART 1.COM 770-398-1816



- KEYNOTES
- 1 1/2" CW & 1/2" HW VALVED & TO MANIFOLD SYSTEM MFS-1, MOUNTED ABOVE CEILING ON CORRIDOR WALL.
 - 2 1/2" HWR UP
 - 3 1/2" CW & 1/2" HW DN
 - 4 1/2" CW & 1" 1/4" HW DN. PROVIDE 1/2" 1/4" HW LINE TO DISHWASHER. TEMPER HW TO 110°.
 - 5 1/2" CW DN
 - 6 1/2" CW DN
 - 7 1/2" CW DN
 - 8 1/2" CW DN
 - 9 1/2" CW DN
 - 10 1/2" CW DN. PROVIDE BACKFLOW PREVENTER BFP-2 AT FINAL CONNECTION.
 - 11 PROVIDE SHUTOFF VALVE AT ACCESSIBLE LOCATION ABOVE CEILING.
 - 12 1/2" CW & 1/2" HW DN TO WASHER WITH WHA-B ON EACH DROP.
 - 13 NATURAL GAS DN WITH SHUTOFF VALVE, DIRT LEG, PRESSURE REDUCING VALVE & UNION.
 - 14 NATURAL GAS UP
 - 15 NATURAL GAS 1/2" MAKEUP WATER SUPPLY WITH BACKFLOW PREVENTER BELOW CEILING TO POOL EQUIPMENT. SEE MECHANICAL WITH EQUIPMENT TO BE INSTALLED. SEE FOOTNOTES FOR ADDITIONAL INFORMATION.
 - 16 1/2" 1/4" CW INLET, 1/2" 1/4" CW OUTLET TO MIXING VALVE.
 - 17 1/2" CW DN TO HYDRATION STATION. PROVIDE SHUTOFF VALVE WITH EQUIPMENT TO BE INSTALLED. PROVIDE 1/2" 1/4" CW WATER BFP-2 AT FINAL CONNECTION.
 - 18 1/2" CW & 1/2" HW UP
 - 19 8" FIRE SERVICE ENTRANCE RIG.
 - 20 1/2" CW TO BEVERAGE EQUIPMENT. PROVIDE BACKFLOW PREVENTER BFP-2 AT FINAL CONNECTION.
 - 21 1/2" CW DN TO FLOOR
 - 22 NATURAL GAS UP



Order Plans

WWW.DILINE.COM