

PHILLIPS

KEYPLAN

CONSULTANT



PROFICIENT
ENGINEERING
6991 Peachtree Industrial Blvd Building 700
Peachtree Corners, Georgia 30092
404.330.9789
PROJECT # 110288

SEAL



ISSUE & REVISION RECORD

#	DATE	DESCRIPTION
1	06.10.2019	30% DESIGN REVIEW SET
2	08.15.2019	90% REVIEW SET
3	08.23.2019	PERMIT SET

This document is © Phillips Partnership, PC and is considered an instrument of service and is solely for use with respect to the project as indicated herein. All rights reserved. This document may not be reproduced without the prior written consent of Phillips Partnership, PC.

PROJECT

**Fairfield
BY MARRIOTT
INN & SUITES**

DAWSONVILLE, GEORGIA

PROTOTYPE VERSION 2016
REV 7.12.21.16

4 STORY, 92 UNITS
w/ INDOOR POOL

**FAIRFIELD
DAWSON FOREST ROAD
DAWSONVILLE, GA
30534**

CLIENT

RIMROCK COMPANIES
10000 RIVERSIDE AVE
SUITE 32201
JACKSONVILLE, FL 32204

PHILLIPS JOB NUMBER 1972101

ISSUE DATE 08/23/2019

DRAWN BY/CHECKED BY SA MR

DRAWING TITLE
**UNDERGROUND
FLOOR PLAN**

SHEET NUMBER

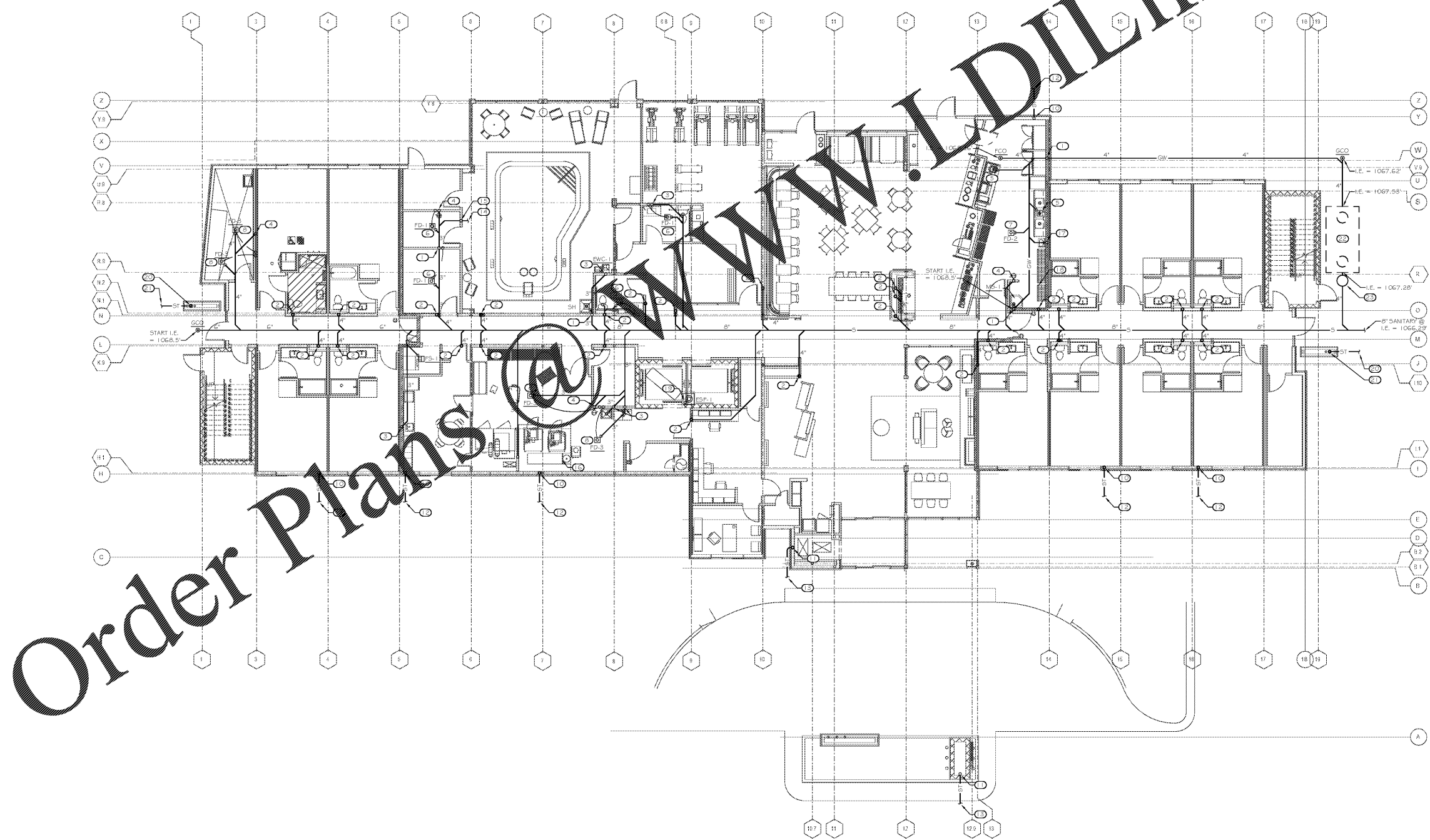
P-1.0U

5901 PEACHTREE DUNWOODY RD.
BUILDING A, SUITE 450
ATLANTA, GEORGIA 30328

PHILLIPS PART.COM 770-398-1816

KEYNOTES

- 1 2" V UP
- 2 4" S UP
- 3 3" S UP
- 4 2" S UP
- 5 3" FLOOR SINK FS-1
- 6 3" FLOOR DRAIN FD-1 WITH 1/2" TP LINE BIF 4 UP
- 7 3" FLOOR DRAIN FD-2
- 8 3" FLOOR DRAIN FD-3 WITH 1/2" TP LINE BIF 4 UP
- 9 3" F-TRAP AT BASE OF FIXTURE
- 10 4" ST UP
- 11 6" ST UP
- 12 4" ST B/G, SEE CIVIL DWG FOR CONT
- 13 6" ST B/G, SEE CIVIL DWG FOR CONT
- 14 6" S B/P TO POOL EQUIPMENT SUMP, FIELD COORDINATE WITH PPOOL EQUIPMENT DESIGN
- 15 3" V UP
- 16 SEE P-1.0 FOR ABOVE FLOOR DRAIN TROUGH
- 17 3" GW UP
- 18 3" GW B/P TO GREASE INTERCEPTOR G-1, 12" DIA IN SUIT, ROUTE 1/2" VENT FROM FLOW CONTROL TO ROOF
- 19 2" PD UP FROM ELEVATOR SUMP PUMP
- 20 3" ST UP
- 21 4" ST B/G, SEE CIVIL DWG FOR CONT
- 22 4" GW B/G TO 100 GALLON PRESSURIZED GREASE INTERCEPTOR, FIELD COORDINATE EXIST LOCATION.
- 23 TESTING MANIFOLD



1 UNDERGROUND FLOOR PLAN
1/8" = 1'-0"