

PHILLIPS

KEYPLAN

CONSULTANT



PROFICIENT ENGINEERING
6591 Peachtree Industrial Blvd Building 700
Peachtree Corners, Georgia 30092
404.333.9725
PROJECT # 119288

SEAL



ISSUE & REVISION RECORD

#	DATE	DESCRIPTION
1	08.10.2019	30% DESIGN REVIEW SET
2	08.15.2019	90% REVIEW SET
3	08.23.2019	PERMIT SET

This document is ©Phillips Partnership, P.C. and is considered an Instrument of Service and is solely for use with respect to the project as indicated herein. All rights reserved. This document may not be reproduced without the prior written consent of Phillips Partnership, P.C.

PROJECT

Fairfield BY MARRIOTT INN & SUITES
DAWSONVILLE, GEORGIA

PROTOTYPE VERSION 2016
REV 7 12-21-18

4 STORY, 92 UNITS
w/ INDOOR POOL

FAIRFIELD
DAWSON FOREST ROAD
DAWSONVILLE, GA
30534

CLIENT

RIMROCK COMPANIES
10000 RIVERSIDE AVE
SUITE 22201
JACKSONVILLE, FL 32204

PHILLIPS JOB NUMBER 1072101

ISSUE DATE 08/23/2019

DRAWN BY/CHECKED BY ATRK

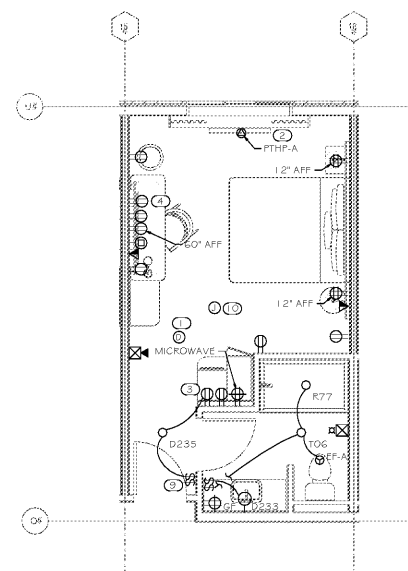
DRAWING TITLE UNIT PLANS

SHEET NUMBER

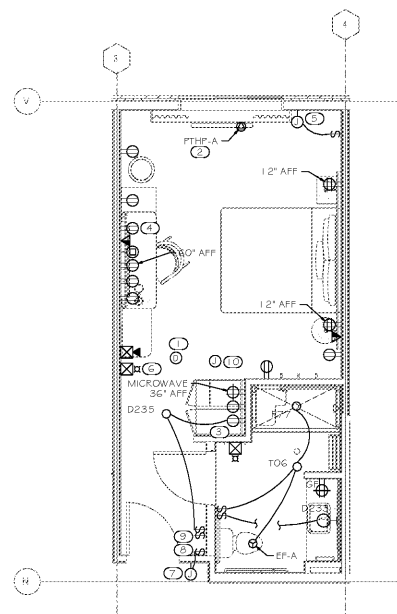
E-3.1

5901 PEACHTREE DUNWOODY RD.
BUILDING A, SUITE 450
ATLANTA, GEORGIA 30328

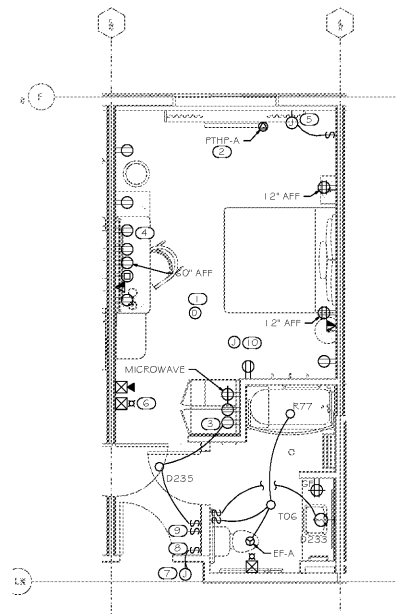
PHILLIPS PART.COM 770-394-1616



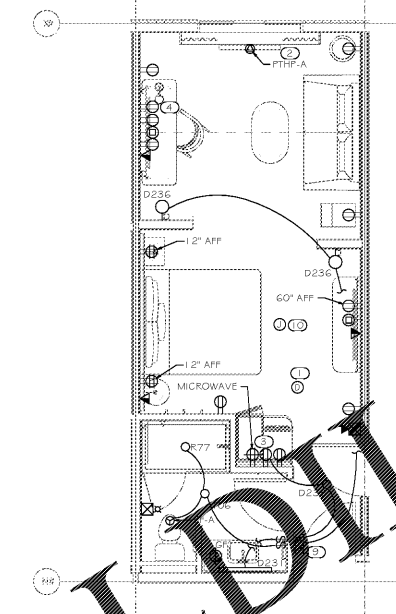
1 FLOOR PLAN - UNIT A
E-3.1 1/4" = 1'-0"



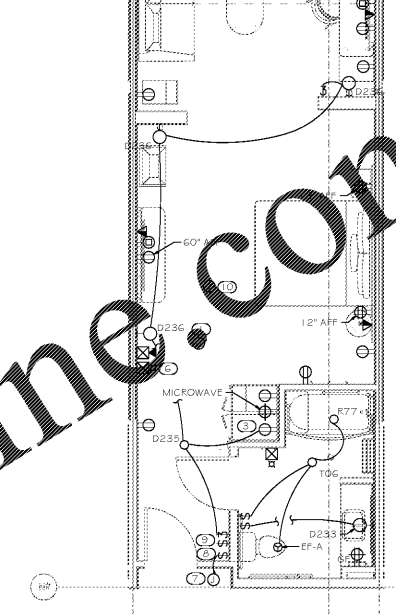
2 FLOOR PLAN - UNIT A1A
E-3.1 1/4" = 1'-0"



3 FLOOR PLAN - UNIT A1B
E-3.1 1/4" = 1'-0"



4 FLOOR PLAN - UNIT A2
E-3.1 1/4" = 1'-0"



5 FLOOR PLAN - UNIT A2A
E-3.1 1/4" = 1'-0"

KEYNOTES

- 1 TYPICAL UNIT SINGLE STATION SMOKE DETECTOR WITH AUDIBLE BASE AND BATTERY BACK-UP. CONNECT IN TANDUM WHERE MORE THAN ONE IN SAME UNIT. PROVIDE VISUAL ANNUNCIATION FOR HEARING IMPAIRED ROOMS.
- 2 SEE HVAC DRAWINGS FOR ADDITIONAL INFORMATION. RECEPTACLE FOR FTHP TO BE BELOW FTHP. PROVIDE 15A/2P BREAKER, 2# 12, #1/2", NEMA 6-15R FOR FTHP-A. PROVIDE 20A/2P BREAKER, 2# 12, #1/2", NEMA 6-20R FOR FTHP-B. COORDINATE EXACT NEMA RECEPTACLE WITH EQUIPMENT INSTALLER.
- 3 SWITCHED OUTLET FOR CABINET LIGHTS. CABINET LIGHTS PROVIDED BY FURNITURE VENDOR. WARDROBE INCLUDES PLUG-IN LIGHT UNDER SHELF.
- 4 DUPLEX RECEPTACLE w/ (2) USB PORTS @ 34" AFF.
- 5 PROVIDE POWER FOR MOTORIZED ROLLING SHADE. COORDINATE EXACT LOCATION AND REQUIREMENTS WITH MANUFACTURER PRIOR TO ROUGH-IN.
- 6 DOORBELL (STROBE), PROVIDE AT HEARING IMPAIRED ROOM ONLY.
- 7 PROVIDE A DOORBELL (HORN/STROBE) IN EACH ROOM WITH AN ACCESSIBLE SHUT-OFF SWITCH LOCATED ADJACENT TO THERMOSTAT. EXACT LOCATION TO BE COORDINATED WITH ARCHITECT.
- 8 DOORBELL DISCONNECT SWITCH TO BE INSTALLED @ 48" AFF.
- 9 MASTER SWITCH. COORDINATE EXACT REQUIREMENTS WITH OWNER. TYPICAL.
- 10 POWER FOR ZONE TERMINAL REGISTER. SEE MECHANICAL DRAWINGS FOR ADDITIONAL REQUIREMENTS.

GENERAL NOTES

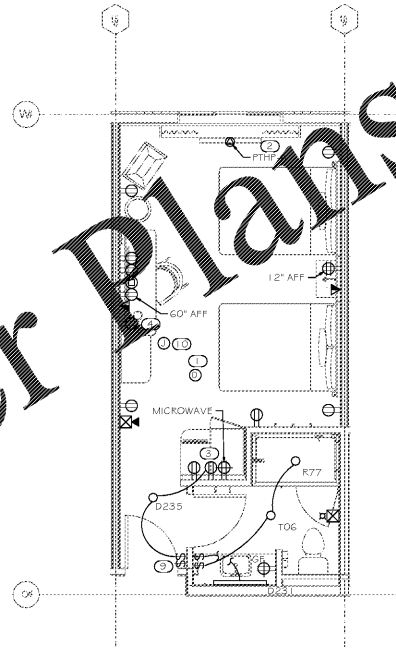
PER THE REQUIREMENT OF NEC ARTICLE 210.8(A) AND 210.8(B) ARC-Fault Protection (AFP) IS REQUIRED IN ALL 120-VOLT, SINGLE-PHASE BRANCHED CIRCUITS THAT SUPPLY OUTLETS IN DWELLING UNIT BEDROOMS, BATHING AREAS, KITCHENS AND LAUNDRY AREAS. THIS INCLUDES RECEPTACLE OUTLETS, LIGHTING OUTLETS, CEILING FAN OUTLETS AND SMOKE DETECTORS.

REFER TO ARCHITECTURAL DRAWINGS FOR EXACT LOCATIONS OF ALL CEILING MOUNTED DEVICES.

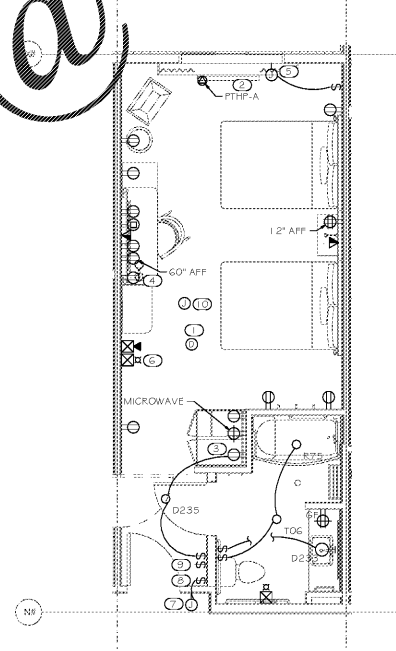
ALL RECEPTACLES SHALL BE GROUNDING TYPE AS REQUIRED BY ARTICLE 250-146 AND SHALL BE TAMPER-RESISTANT UNLESS OTHERWISE ALLOWED BY ARTICLE 406.12.

ALL WALL OUTLETS SHALL NOT OCCUR IN SAME WALL CAVITY OF ADJACENT GUESTROOMS.

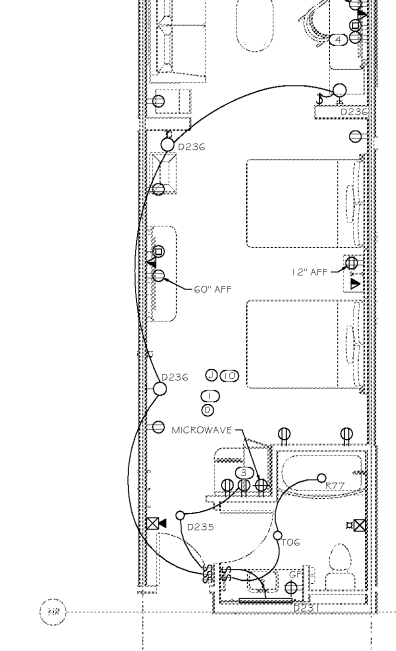
PROVIDE ADA APPROVED DOORBELL SYSTEM FOR ALL HEARING IMPAIRED ROOMS.



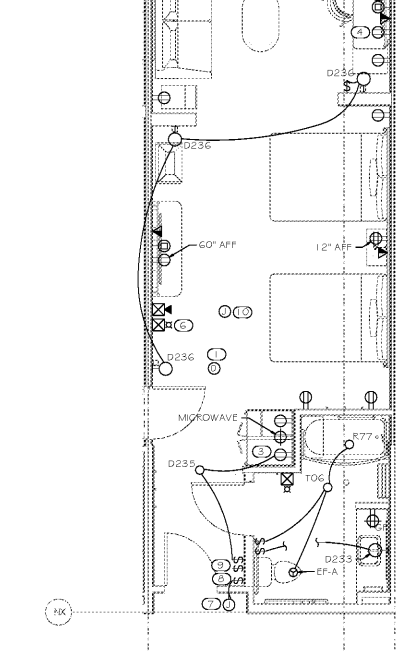
6 FLOOR PLAN - UNIT B
E-3.1 1/4" = 1'-0"



7 FLOOR PLAN - UNIT B1A
E-3.1 1/4" = 1'-0"



8 FLOOR PLAN - UNIT B2
E-3.1 1/4" = 1'-0"



9 FLOOR PLAN - UNIT B2A
E-3.1 1/4" = 1'-0"

Order Plans @ www.LDLine.com