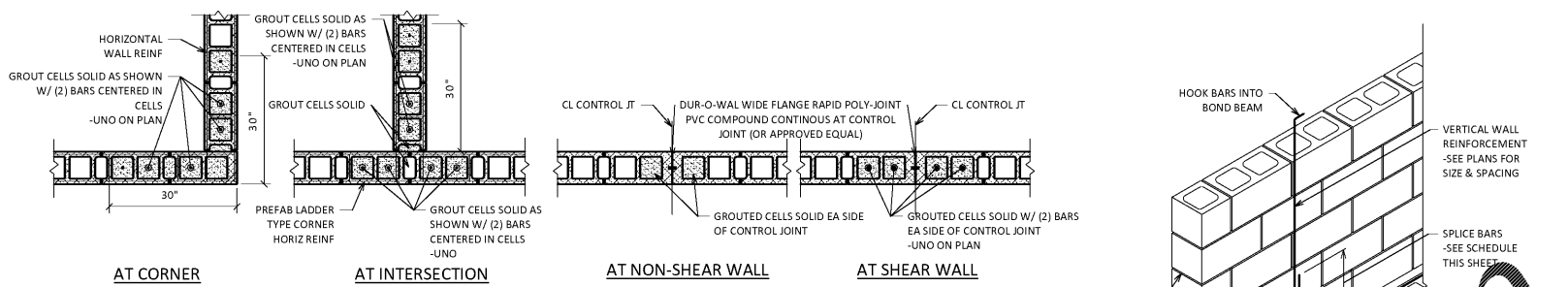


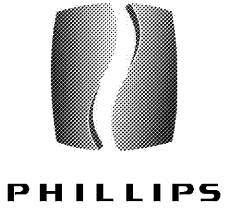
MASONRY WALL LINTEL SCHEDULE						
OPENING WIDTH		STEEL LINTELS		MASONRY LINTELS		
MIN.	MAX.	8" WALL***	12" WALL***	LINTEL DEPTH AND REINFORCING**	8" WALL	12" WALL
-	2'-0"	(2) 14x4x1/4	(2) 16x4x5/16 (SLV)	7 5/8"	(2) #5 BOT	(2) #5 BOT
2'-1"	3'-6"	(2) 14x4x1/4	(2) 16x4x5/16 (SLV)	7 5/8"	(2) #5 BOT	(2) #5 BOT
3'-7"	5'-0"	(2) 14x4x1/4	(2) 16x4x5/16 (SLV)	15 5/8"	(2) #5 BOT	(2) #5 BOT
5'-1"	6'-6"	(2) 14x4x1/4	(2) 16x4x5/16 (SLV)	15 5/8"	(2) #5 BOT	(2) #5 BOT
6'-7"	8'-0"	(2) 14x4x1/4	(2) 16x4x5/16 (SLV)	15 5/8"	(2) #5 BOT	(2) #5 BOT
8'-1"	10'-0"	(2) 16x4x5/16 (LLV)	(2) 16x6x5/16	23 5/8"	(2) #5 BOT	(2) #5 BOT
10'-1"	12'-0"	(2) 16x4x5/16 (LLV)	(2) 16x6x5/16	23 5/8"	(2) #5 BOT	(2) #5 BOT
12'-1"	14'-0"	(2) 17x4x3/8 (LLV)	(2) 18x6x1/2 (LLV)	23 5/8"	(2) #8 BOT	(2) #8 BOT
14'-1"	16'-0"	(2) 18x4x3/16 (LLV)	(2) 18x6x1/2 (LLV)	23 5/8"	(2) #8 BOT	(2) #8 BOT

MASONRY LINTEL SCHEDULE	
CLEAR SPAN	LINTEL
< 6'-0"	L 4 x 4x 3/8
6'-1" - 10'-0"	L 6 x 4x 3/8 (LLV)
10'-1" - 12'-0"	L 7 x 4x 3/8 (LLV)

NOTE: BEAR LINTEL 6" MIN ON EACH SIDE OF OPENING



- NOTES:**
- CORNER/TEE INTERSECTION REINFORCEMENT SHALL BE LAPPED WITH THE TYPICAL LADDER TYPE HORIZONTAL REINFORCEMENT AND EXTEND A MINIMUM OF 30" MINIMUM IN EACH DIRECTION AT THE INTERSECTION.
  - SEE GENERAL NOTES FOR SPACING OF TYPICAL HORIZONTAL REINFORCEMENT.
- NOTES:**
- SEE GENERAL NOTES FOR SPACING GUIDELINES FOR CONTROL JOINTS IN INTERIOR/EXTERIOR CMU WALLS.
  - SEE ARCH FOR EXACT LOCATIONS OF CONTROL JOINTS.
  - DISCONTINUE HORIZONTAL REINFORCEMENT AT CONTROL JOINT LOCATIONS.



**PHILLIPS**

KEYPLAN:

CONSULTANT

**DEL VALLE + MCNEIL, LLC**  
Structural Engineers  
www.dvmstructural.com  
404.369.0058  
Project No. 19-201027  
GA COA #: PEF007235

ISSUE & REVISION RECORD

#	DATE	DESCRIPTION

PROJECT

**Fairfield**  
**BY MARRIOTT**  
**INN & SUITES**

**DAWSONVILLE, GEORGIA**

PROTOTYPE VERSION 2016  
REV 7.12-21-18

4 STORY, 92 UNITS  
w/ INDOOR POOL

**FAIRFIELD**  
**DAWSON FOREST ROAD**  
**DAWSONVILLE, GA**  
**30534**

CLIENT

**RIMROCK COMPANIES**  
10000 RIVERSIDE AVE  
SUITE 20201  
JACKSONVILLE, FL 32204

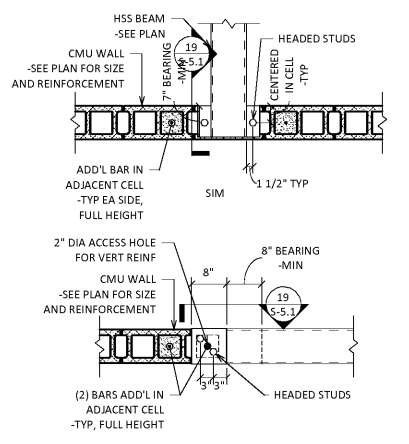
PHILLIPS JOB NUMBER: 1972101  
ISSUE DATE: 08/23/2019  
DRAWN BY/CHECKED BY: GHWT/DV  
DRAWING TITLE: TYPICAL MASONRY DETAILS

SHEET NUMBER

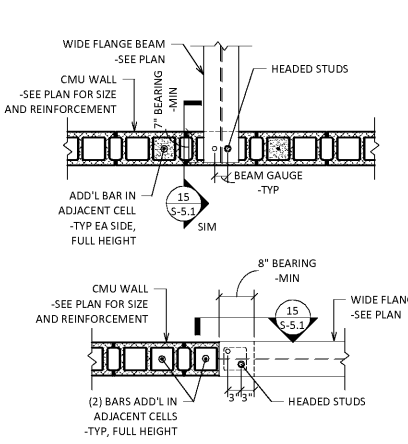
**S-5.1**

5901 PEACHTREE DUNWOODY RD.  
BUILDING A, SUITE 450  
ATLANTA, GEORGIA 30328  
PHILLIPSPART.COM 770.384.1616

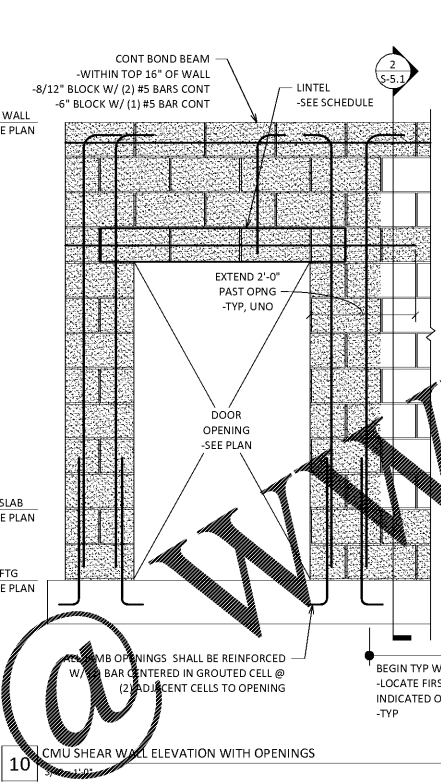
17 NON-LOAD BEARING MASONRY LINTEL SCHEDULE  
3/4" = 1'-0" TYPICAL DETAIL



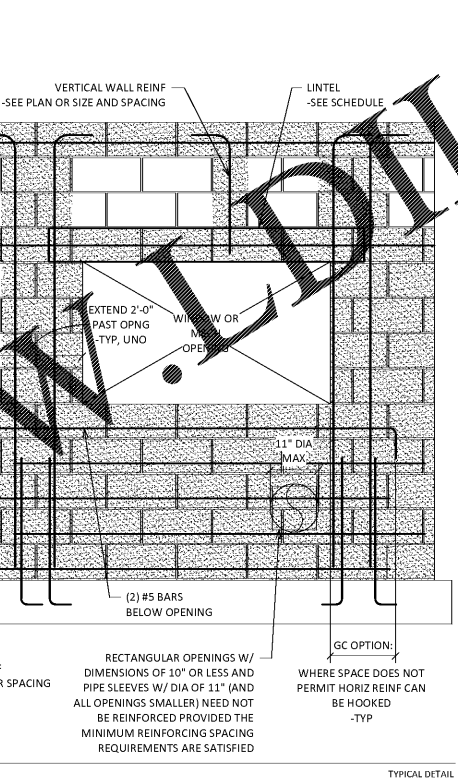
13 MASONRY VENEER LINTEL SCHEDULE  
3/4" = 1'-0" TYPICAL DETAIL



9 CMU WALL CORNER/TEE INTERSECTIONS  
3/4" = 1'-0" TYPICAL DETAIL



5 CMU CONTROL JOINTS  
3/4" = 1'-0" TYPICAL DETAIL



**REINFORCING LAP LENGTH SCHEDULE\***

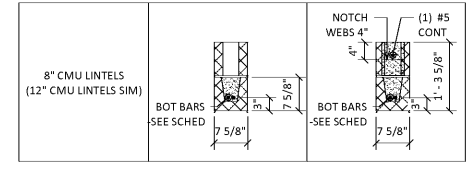
BAR SIZE	LAP LENGTH
#4	21"
#5	32" (6" CMU) 26" (8" / 12" CMU)
#6	40"

**LOW LIFT GROUTING PROCEDURE**

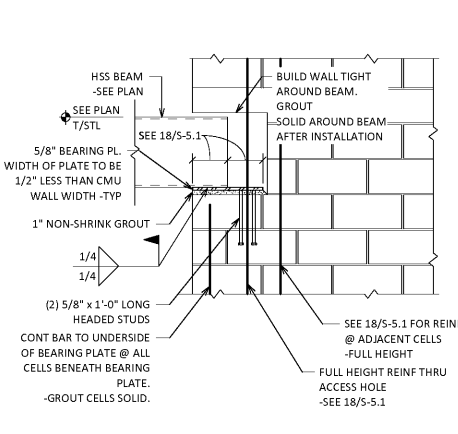
- CONSTRUCT WALL TO HEIGHT OF 5'-0". ALLOW MORTAR TO SET SUFFICIENTLY TO WITHSTAND GROUT PRESSURE.
- INSPECT UNITS FOR ALIGNMENT. CLEAN OUT CELLS TO BE FILLED.
- FILL CELLS TO 1 1/2" BELOW TOP COURSE.
- DELAY 3 TO 5 MINUTES PRIOR TO CONSOLIDATING TO ALLOW WATER TO BE ABSORBED BY MASONRY.

\* LAP LENGTHS APPLY TO 8" OR 12" CMU WITH REINFORCING CENTERED IN CELL (UNO).

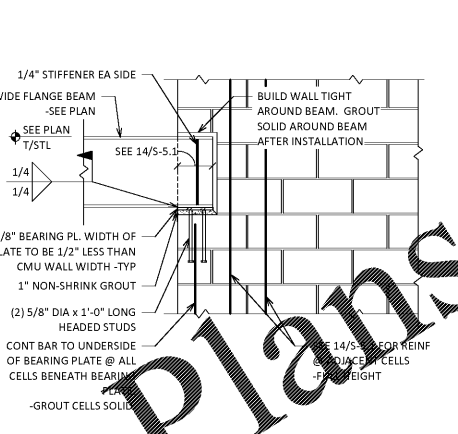
2 DETAIL OF LOW-LIFT REINFORCED MASONRY CONSTRUCTION  
3/4" = 1'-0" TYPICAL DETAIL



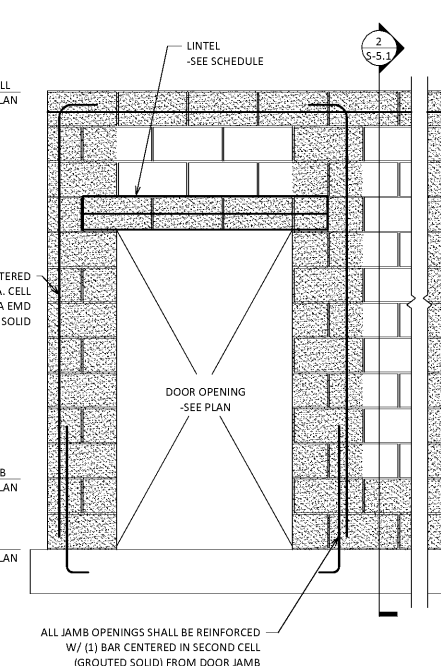
18 HSS BEAM ON CMU WALL  
3/4" = 1'-0" TYPICAL DETAIL



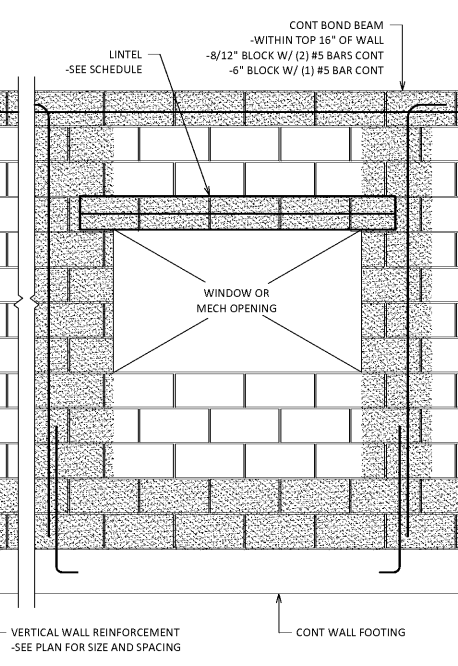
14 WIDE FLANGE BEAM ON CMU WALL  
3/4" = 1'-0" TYPICAL DETAIL



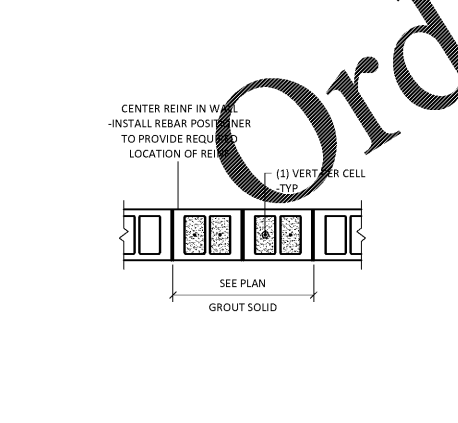
10 CMU SHEAR WALL ELEVATION WITH OPENINGS  
3/4" = 1'-0" TYPICAL DETAIL



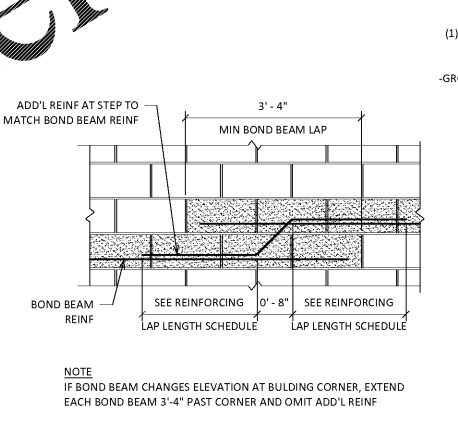
3 MASONRY LINTEL REINFORCING CONFIGURATIONS  
3/4" = 1'-0" TYPICAL DETAIL



19 ELEVATION AT HSS BEAM ON CMU WALL  
3/4" = 1'-0" TYPICAL DETAIL



15 ELEVATION AT WIDE FLANGE BEAM ON CMU WALL  
3/4" = 1'-0" TYPICAL DETAIL



12 CMU NON-SHEAR WALL ELEVATION WITH OPENINGS  
3/4" = 1'-0" TYPICAL DETAIL



4 CMU SHEAR WALL ELEVATION  
3/4" = 1'-0" TYPICAL DETAIL



Order Plans

20 CMU PILASTER DETAIL  
3/4" = 1'-0" TYPICAL DETAIL



16 STEPPED BOND BEAM DETAIL  
3/4" = 1'-0" TYPICAL DETAIL



12 CMU NON-SHEAR WALL ELEVATION WITH OPENINGS  
3/4" = 1'-0" TYPICAL DETAIL



4 CMU SHEAR WALL ELEVATION  
3/4" = 1'-0" TYPICAL DETAIL

