

PHILLIPS

KEYPLAN

CONSULTANT



DEL VALLE + MCNEIL, LLC
Structural Engineers
www.dvmstructural.com
404.369.0058
Project No. 19-201027
GA COA #: PEF007235

SEAL

ISSUE & REVISION RECORD

DATE DESCRIPTION

This document is the property of Phillips Partnership, P.C. and is considered an instrument of service and is loaned for use with respect to the project as indicated below. All rights reserved. This document may not be reproduced without the prior written consent of Phillips Partnership, P.C.

PROJECT

Fairfield
BY MARRIOTT
INN & SUITES

DAWSONVILLE, GEORGIA

PROTOTYPE VERSION 2016
REV 7/12-01-16

4 STORY, 92 UNITS
w/ INDOOR POOL

FAIRFIELD
DAWSON FOREST ROAD
DAWSONVILLE, GA
30534

CLIENT

RIMROCK COMPANIES
10000 RIVERSIDE AVE
SUITE 3201
JACKSONVILLE, FL 32204

PHILLIPS JOB NUMBER 1972101

ISSUE DATE 08/23/2019

DRAWN BY/CHECKED BY GHWT/IDV

DRAWING TITLE

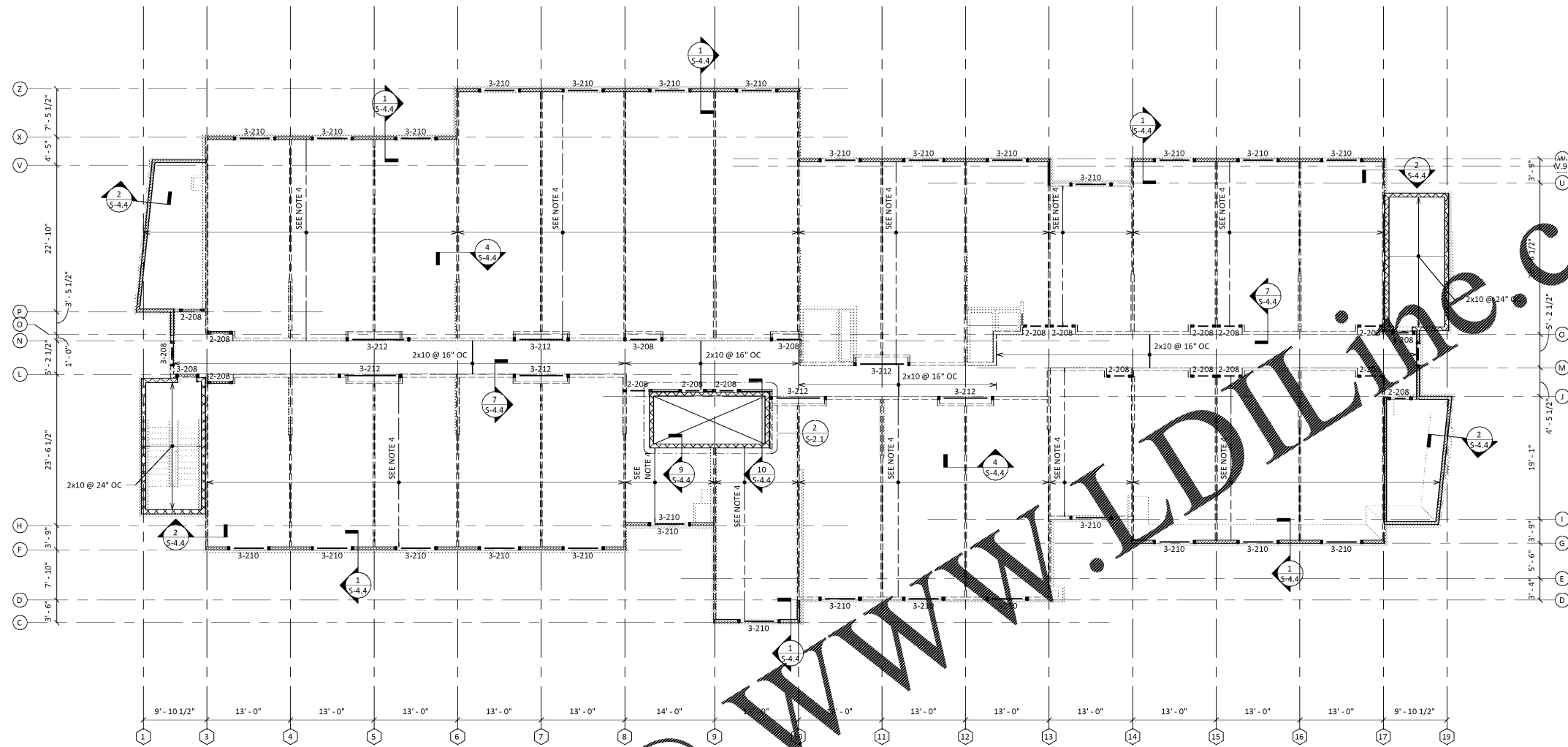
ROOF FRAMING PLAN

SHEET NUMBER

S-2.1

5901 PEACHTREE DUNWOODY RD.
BUILDING A, SUITE 450
ATLANTA, GEORGIA 30328

PHILLIPSPART.COM 770.394.1616



ROOF FRAMING NOTES

- 1. TRUSS LAYOUT AND PROFILES BY TRUSS MANUFACTURER.
2. ALL EXTERIOR WALLS ARE LOAD BEARING.
3. SEE S-0.5 FOR ALL FRAMING SCHEDULES.
4. ROOF FRAMING TO 24" MIN PRE-MANUFACTURED TRUSSES @ 24" OC. TRUSS SPACING IS NOMINAL ONLY, MANUFACTURER TO PROVIDE TRUSS LAYOUT. TRUSS TOP CHORD TO BE SLOPED AS INDICATED BY ARCH. DRAWINGS. TRUSSES SHALL BE DESIGNED TO ACCOMMODATE CONCENTRATED LOADS DUE TO THE MECHANICAL EQUIPMENT.
5. COORDINATE LOCATION, WEIGHT, AND SIZE OF ALL MECHANICAL ROOF TOP UNITS WITH MECHANICAL ARCHITECTURAL DRAWINGS. TRUSSES SHALL BE DESIGNED TO ACCOMMODATE CONCENTRATED LOADS DUE TO THE MECHANICAL EQUIPMENT.
6. DOUBLE UP LIFT TRUSSES AT RTU LOCATIONS, BEAR TRUSSES ON A (3) 2X STUD PACK THAT EXTENDS TO GROUND.
7. ALL 2x & DOUBLE 2x HANGERS TO BE SIMPSON TYPE JB, UNO (SIMPSON TYPE LB AT WELD ON CONNECTIONS). ALL OPEN WEB FLOOR TRUSS CONNECTIONS TO BE BY MANUFACTURER. SEE "WOOD UPLIFT LOAD RESISTING SYSTEM" NOTES ON S-0.2 FOR TRUSS UPLIFT TIES.
8. BEAMS HAVE FULL BEARING ON BEARING STUDS AND POSTS CALLED OUT.
9. ROOF TRUSS MANUFACTURER SHALL COORDINATE ALL ROOF PENETRATION LOCATIONS AND SIZES (INCLUDING ROOF DRAINS) WITH ARCHITECTURAL, MECHANICAL, AND PLUMBING DRAWINGS.
10. INDICATES WOOD COLUMN OR STUD PACK. 'X' INDICATES MIN NUMBER OF STUDS IN STUD PACK.
11. INDICATES 5/8" APA CDX PLY WOOD OR OSB ROOF SHEATHING, 32/16 (EXPOSURE 1), SUPPORTED ON PRE-MANUFACTURED WOOD TRUSSES (BY SPECIALTY ENGINEER). SEE GENERAL NOTES FOR FASTENING REQUIREMENTS.
12. INDICATES LOCATION OF LOAD BEARING/ SHEAR WALL BELOW. SEE S-0.5 FOR WALL SCHEDULES.

DEAD LOADS

- ROOFING MATERIAL: 5 PSF
SELFWEIGHT (TRUSS): 6 PSF
MISC.: 4 PSF
TOP CHORD DEAD LOAD: 15 PSF

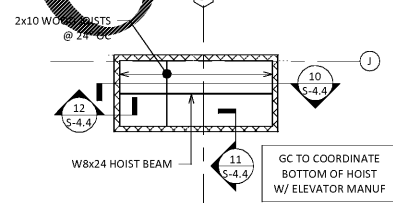
BOTTOM CHORD DEAD LEAD: 10 PSF

LIVE LOADS: 20 PSF

ALLOWABLE NET UPLIFT: 3 PSF

ALLOWABLE NET UPLIFT WITHIN 7.5 FT OF PERIMETER: 8 PSF

1 ROOF FRAMING PLAN
1/8" = 1'-0"



2 ELEVATOR ROOF FRAMING PLAN
1/8" = 1'-0"

Order Plans @

