

PHILLIPS

KEYPLAN _____

CONSULTANT _____

SEAL _____

ISSUE & REVISION RECORD _____

#	DATE	DESCRIPTION

This document is © Phillips Partnership, P.C. and is considered an instrument of service and is solely for use with regard to the project as indicated below. All rights reserved. This document may not be reproduced without the prior written consent of Phillips Partnership, P.C.

PROJECT _____

Fairfield
BY MARRIOTT
INN & SUITES

DAWSONVILLE, GEORGIA

PROTOTYPE VERSION 2016
REV 7 12-21-16

4 STORY, 92 UNITS
w/ INDOOR POOL

FAIRFIELD
DAWSON FOREST ROAD
DAWSONVILLE, GA
30534

CLIENT _____

RIMROCK COMPANIES
10000 RIVERSIDE AVE
SUITE 3201
JACKSONVILLE, FL 32204

PHILLIPS' JOB NUMBER: 1972101

ISSUE DATE: 08/23/2019

DRAWN BY/CHECKED BY: _____
Author / Checker

DRAWING TITLE

'B1a' ACCESSIBLE
QUEEN/QUEEN (TUB)
GUESTROOM PLANS

SHEET NUMBER

A-6.12

5901 PEACHTREE DUNWOODY RD.
BUILDING A, SUITE 450
ATLANTA, GEORGIA 30328

PHILLIPSPART.COM 770.394.1616

REFERENCE NOTES

- A. REFER TO DESIGN STANDARDS 'GUESTROOMS' CHAPTER FOR MAIN REQUIREMENTS RELATED TO THIS SHEET. ARCHITECT IS RESPONSIBLE FOR DESIGNING PROJECT IN ACCORDANCE WITH THE ENTIRE DESIGN STANDARDS.
- B. REFER TO INTERIOR DESIGN SPECIFICATION MANUAL - VISUAL DECOR MAP TO PROPERLY SELECT INTERIOR FINISHES, ARTWORK AND OPTIONAL ITEMS FOR ALL GUESTROOM TYPES.
- C. REFER TO SITC DIAGRAMS FOR ACOUSTIC REQUIREMENTS FOR PARTITIONS BETWEEN GUESTROOMS AND AT PUBLIC SPACE ADJACENCIES.

GENERAL NOTES

- 1. DIMENSIONS ARE TO FACE OF PARTITION UNLESS NOTED OTHERWISE. HOLD MINIMUM CLEAR DIMENSIONS.

CRITERIA NOTES

CRITERIA NOTES ARE SHOWN CATEGORIZED BY DISCIPLINE AND SHOULD BE INTERPRETED TO APPLY TO MORE THAN ONE DISCIPLINE. FOR EFFICIENCY, NOTES ARE ONLY SHOWN ON ONE DISCIPLINE. CONSULT THESE SHEETS FOR FAMILIARIZE THEMSELVES WITH ALL CRITERIA NOTES.

ARCHITECTURE:

- A1 LOCATE OPERABLE SHADERS OPPOSITE STUDENT CONTACT ON SEE WALL PROFILE DETAIL ON SHEET 100.
- A2 CORNER AND DRAPEY FINISHES. ELECTRICAL ADJUSTMENT TO ACCESSIBLE GUESTROOMS.
- E1 LOCATE MANUFACTURER TRACKS. COORDINATE LOCATION WITH MANUFACTURER'S INSTALLATION REQUIREMENTS. WHEN CEILING HEIGHT IS HIGHER THAN 9'-0", MANUFACTURER'S INSTALLATION DETAIL ON SHEET 100. EXTENDED PARTITIONS ABOVE BACK AND SIDES OF GUESTROOMS TO BE FINISHED.
- E2 INDICATE OUTLET LOCATION WITHIN WALL CONSTRUCTION TO AVOID OUTLETS OCCURRING IN SAME CAVITY WITHIN PARTITION. HATCHED AREA INDICATES SPACE WHERE OUTLETS SHOULD OCCUR. SEE ALSO DETAIL ON SITC DIAGRAM SHEET 090.
- E3 17" X 17" CUT-OUT AT SIDE OF CABINET FOR ACCESS TO REFRIGERATOR OUTLET.
- E4 WALL MOUNTED STOP LOCATION WHEN CONNECTING DOOR OPENS NEAR FURNITURE. SEE DETAIL ON 550 FOR ADDITIONAL INFORMATION.
- E5 INDICATE BLOCKING IN WALL FOR ALL CASEWORK, FIXTURES, GRAB BARS AND ACCESSORIES. COORDINATE LOCATION WITH MANUFACTURER'S INSTALLATION REQUIREMENTS.

INTERIOR DESIGN:

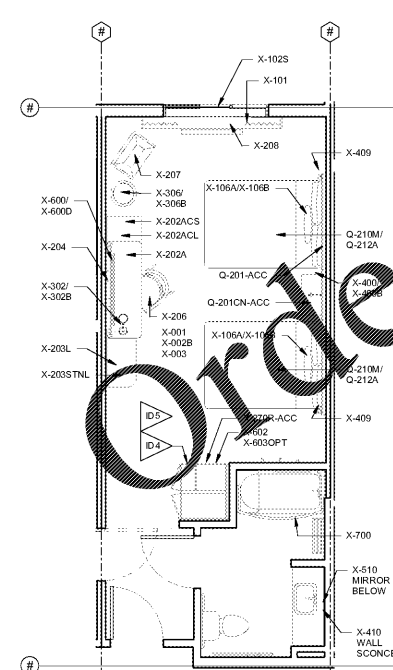
- ID1 ALL EXTERIOR CORNERS SHALL HAVE FULL HEIGHT CORNER CHAIRS PER FINISH INDEX.
- ID2 CENTER ARTWORK ON SOFA.
- ID3 WHERE REQUIRED FOR ACCESSIBILITY, PROVIDE MOUNTED SHADERS. REFER TO DRAWING MANUAL AND ID SITC MANUAL FOR ADDITIONAL INFORMATION AND POWER REQUIREMENTS.
- ID4 IRON AND IRONING BOARD STORAGE ACCESSORY TO BE LOCATED INSIDE WARDROBE.
- ID5 FOR ACCESSIBLE GUESTROOM TYPES WITH A TUB OR 60" ROLL IN SHOWER, THE ORIENTATION OF THE WARDROBE UNIT IS ROTATED AND REFERRED. TAKE ADDITIONAL PRECAUTION TO ENSURE THE CORRECT UNIT IS SPECIFIED AND THE OUTLETS ARE CORRECTLY ORIENTED.
- ID6 TEXTURED WALL COATING IS THE REQUIRED FINISH FOR EXTERIOR GUESTROOM WALLS TO ELIMINATE MOLD AND MILDWE.
- ID7 SEE DETAIL 1056 FOR RECED HEIGHT RELATIONSHIP BETWEEN DRAPEY OVERHANG AT WINDOW SILL AND HEIGHT OF WOOD LEDGE OVER PTAC UNIT.
- ID8 REFER TO INTERIOR DESIGN SPECIFICATION MANUAL WINDOW TREATMENT SPECIFICATIONS AND ELEVATIONS FOR ROLLER SHADE INFORMATION.
- ID9 REFER TO INTERIOR DESIGN SPECIFICATION MANUAL FOR READING LIGHT, A-406 & HEADBOARD LIGHTS. COORDINATE HEIGHT WITH PANEL AS REQUIRED.

ENGINEERING:

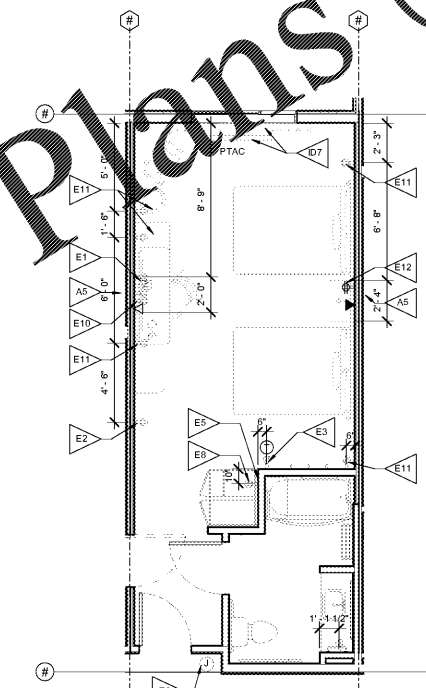
- E11 OUTLETS FOR TV, CABLE AND POWER FOR TV MOUNTED IN OPENING OF WALL MOUNTED TV PANEL. COORDINATE HEIGHT WITH PANEL AS REQUIRED.
- E12 CONVENIENCE OUTLET LOCATION WHEN ROOM HAS A COMMUNICATING DOOR TO ADJACENT ADA ROOM.
- E13 THERMOSTAT. ALIGN WITH OUTLET BELOW WHERE OCCURS. SEE ELEVATION FOR ADDITIONAL INFORMATION. ALIGN DEVICES VERTICALLY AT PROXIMITY OF WALL.
- E14 SWITCHED OUTLET FOR CABINET LIGHTS. CABINET LIGHTS PROVIDED BY FURNITURE VENDOR. WARDROBE INCLUDES PLUG-IN LIGHT UNDER SHELF. ADDITIONAL PLUG-IN OVER-CABINET LIGHT IS OPTIONAL. REFER TO ID SPEC MANUAL.
- E15 DUPLEX OUTLET FOR MICROWAVE AND POWER STRIP.
- E16 DOORBELL SWITCH, LIGHT AND DISCONNECT SWITCH TO BE PROVIDED AT HEADBOARD AND ACCESSIBLE GUESTROOMS. SEE DETAIL SHEET 521.
- E17 CENTER FIXTURE AT SHOWERHEAD.
- E18 REFRIGERATOR OUTLET.
- E19 EXPANDED FANLIGHT LOCATION. TO BE SWITCHED WITH MAIN ROOM LIGHT. WHEN CONTIGUOUS VENTING IS USED, INSTALL FIXTURE TYPE DRBX-406.
- E20 WALL OUTLET ABOVE AND CENTERED ON DESK AS POSSIBLE. OUTLET SPEC: LEGRAND RADANT, (2) TMB US50VCO, RWP20W, 2 GANG WALL PLATE.
- E21 PROVIDE WALL OUTLETS FOR DESK & FLOOR LAMP. COFFEE MAKER, READING LIGHTS, AND CONVENIENCE.
- E22 RECEPTACLE AT HEADBOARD FOR LIGHTS AND PHONE. LOCATE: HIND AND RICHMOND AND CENTERED ON WALL OR CENTER PANELS AT 1'-0" AFF (MAX).

ELECTRICAL LEGEND

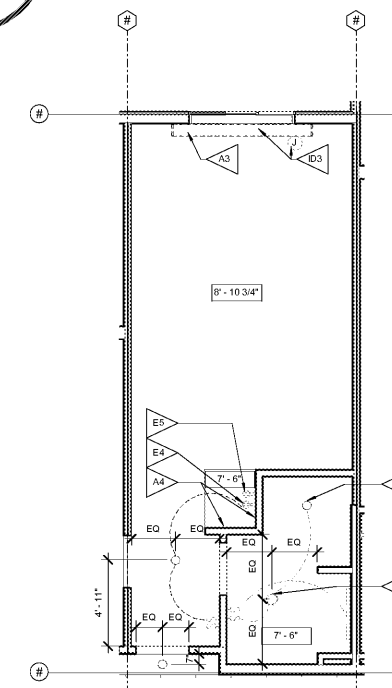
- WALL MTD LT FIXTURE
- CEILING LT FIXTURE
- LIGHT SWITCH
- MASTER SWITCH
- DUPLEX RECEPTACLE
- GROUNDING FAULT INTERRUPTER
- DUPLEX RECEPTACLE
- DUPLEX DUPLEX RECEPTACLE
- THERMOSTAT
- TELEPHONE OUTLET
- DATA
- TV OUTLET
- JUNCTION BOX
- TRACEWAY & WIRING



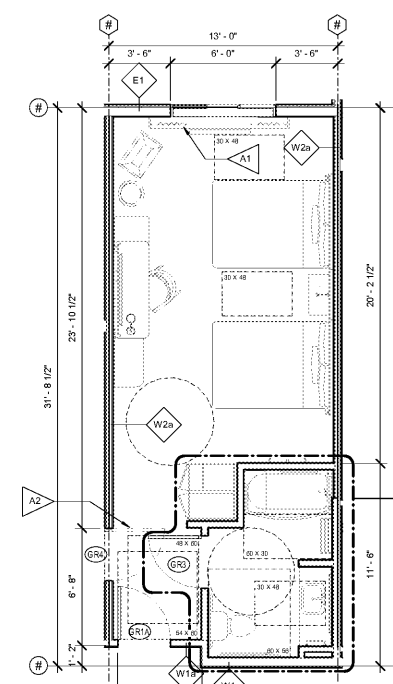
4 'B1a' ACCESSIBLE QUEEN/QUEEN FURNITURE PLAN
1/4" = 1'-0"



3 'B1a' ACCESSIBLE QUEEN/QUEEN ELECTRICAL PLAN
1/4" = 1'-0"



2 'B1a' ACCESSIBLE QUEEN/QUEEN (TUB) RCP
1/4" = 1'-0"



1 'B1a' ACCESSIBLE QUEEN/QUEEN FLOOR PLAN
1/4" = 1'-0"

Order Plans @ WWW.LDILine.com