

PHILLIPS

KEYPLAN

CONSULTANT

SEAL

ISSUE & REVISION RECORD

# DATE DESCRIPTION

This document is the property of Phillips Partnership, P.C. and is considered an instrument of service and is sold for use with respect to the project as indicated below. All rights reserved. This document may not be reproduced without the prior written consent of Phillips Partnership, P.C.

PROJECT

Fairfield  
BY MARRIOTT  
INN & SUITES

DAWSONVILLE, GEORGIA

PROTOTYPE VERSION 2016

REV 7/12-21-18

4 STORY, 92 UNITS

w/ INDOOR POOL

FAIRFIELD  
DAWSON FOREST ROAD  
DAWSONVILLE, GA  
30534

CLIENT

RIMROCK COMPANIES  
10000 RIVERSIDE AVE  
SUITE 3201  
JACKSONVILLE, FL 32204

PHILLIPS JOB NUMBER 1972101

ISSUE DATE 08/23/2019

DRAWN BY/CHECKED BY ZS / JU

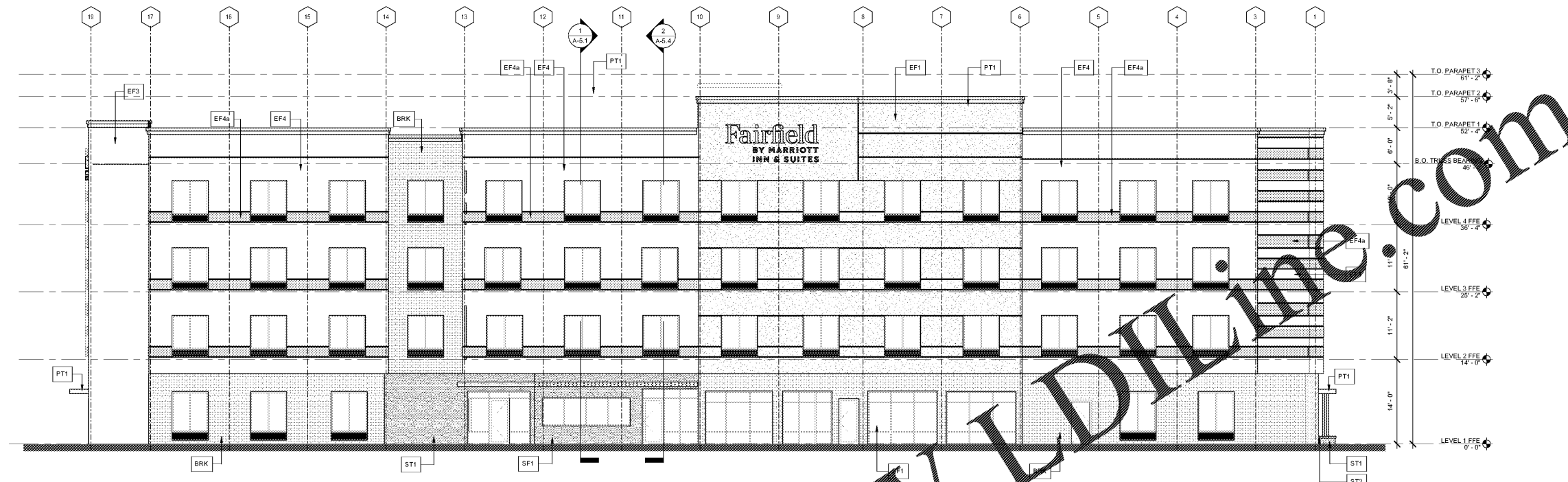
DRAWING TITLE EXTERIOR ELEVATIONS

SHEET NUMBER

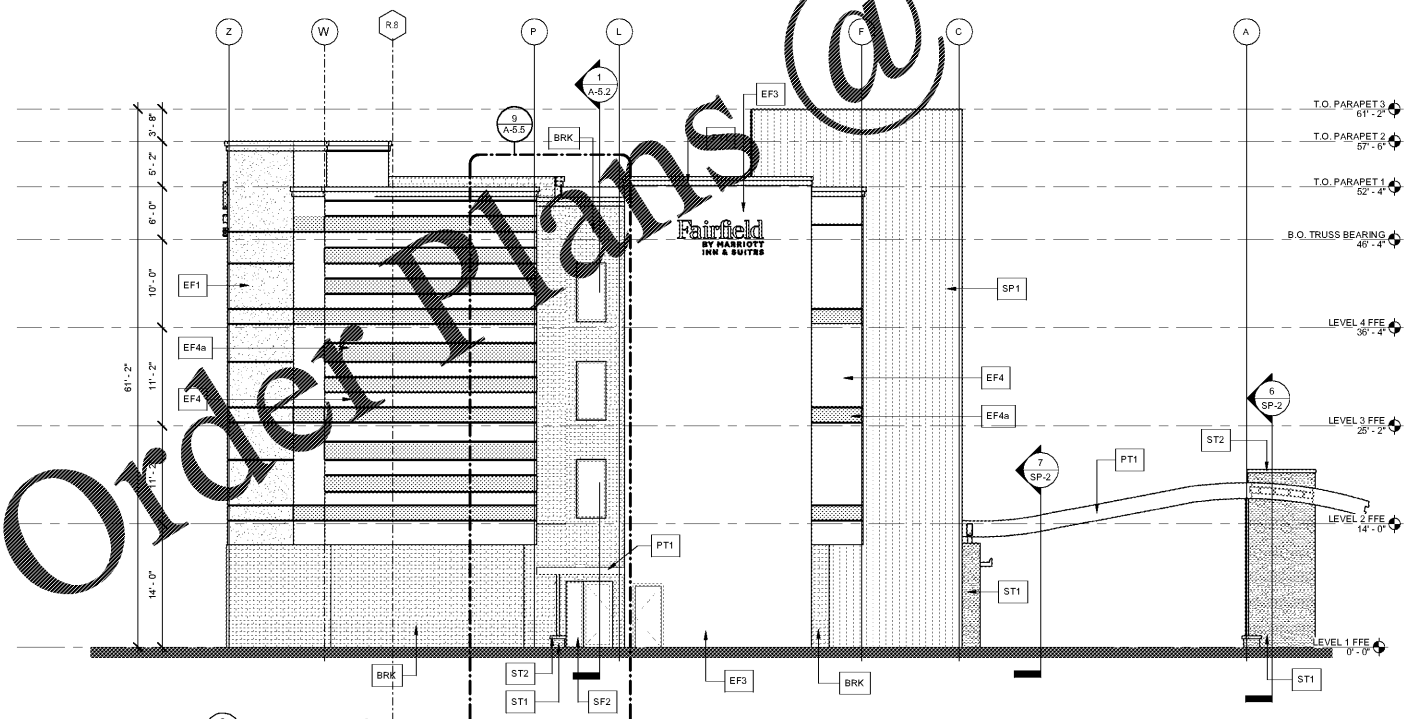
A-4.2

5901 PEACHTREE DUNWOODY RD.  
BUILDING A, SUITE 450  
ATLANTA, GEORGIA 30328

PHILLIPSPART.COM 776-394-1616



1 REAR ELEVATION  
1/8" = 1'-0"



2 LEFT SIDE ELEVATION  
1/8" = 1'-0"

EXTERIOR FINISH SCHEDULE

GRAPHIC	KEY	LOCATION	FINISH
	EF1	ENTRY BAY	MATERIAL: STUCCO SYSTEM COLOR: MATCH DRYVIT #827A "TWILIGHT GRAY" TEXTURE: MATCH DRYVIT "FINESSE" HYDROPHOBIC WATER REPELLENT
	BRK1	BASE	MATERIAL: THIN BRICK MANUF: COLUMBUS BRICK COMPANY REFERENCE: WAKEFIELD MODULAR
	EF3	STAIR TOWER	MATERIAL: STUCCO SYSTEM COLOR: BENJAMIN MOORE "CHARLOTTE SLATE AC-24" TEXTURE: MATCH DRYVIT "SANDPEBBLE"
	EF4	MAIN BODY	MATERIAL: STUCCO SYSTEM COLOR: BENJAMIN MOORE "DOWELL BUFF HC-38" TEXTURE: MATCH DRYVIT "SANDPEBBLE FINE"
	EF4a	ACCENT TEXTURE	MATERIAL: STUCCO SYSTEM COLOR: BENJAMIN MOORE "WILMINGTON TAN HC-34" TEXTURE: MATCH DRYVIT "SANDPEBBLE"
	ST1	EXTERIOR WALL	MATERIAL: MANUFACTURED STONE MASONRY MANUF: HORIZON STONE COLOR: FINE HURST BLEND PATTERN: HANDCRAFTED
	ST2	COPING	MATERIAL: CAST STONE MASONRY MANUF: HORIZON STONE COLOR: TO MATCH ADJACENT WALL COLOR, AS APPROVED BY MARRIOTT REPRESENTATIVE
	SP1		MATERIAL: FIBER-CEMENT SIDING PANELS MANUF: NICHHA COLOR: CEDAR STYLE: VINTAGE WOOD
	PT1	ROOF SHADE CANOPY	MATERIAL: ALUMINUM MANUF: 3-COAT LIQUID FLUOROPOLYMER FINISH COLOR: TO MATCH BONE WHITE (PVDF) - PPG #JUC4350 (DURANAR)
		PORTE COCHERE	MATERIAL: LINEAR METAL CEILING COLOR: WHITE
		ALUMINUM WINDOWS, ALUMINUM STOREFRONT & AUTOMATIC ENTRANCE DOORS	MANUF: CONTROL COLOR POWDER COAT FRAMES: MINFR. STANDARD COLOR THAT MATCHES CLEAR COLOR: TBD GLASS: CLEAR
		METAL COPINGS	COLOR: MATCH ALUMINUM WINDOW COLOR, AS APPROVED BY MARRIOTT REP.
		STEEL DOORS AND FRAMES	COLOR: PAINT TO MATCH ADJACENT SURFACE, AS APPROVED BY MARRIOTT REP.