

Design No. U356

July 15, 2019

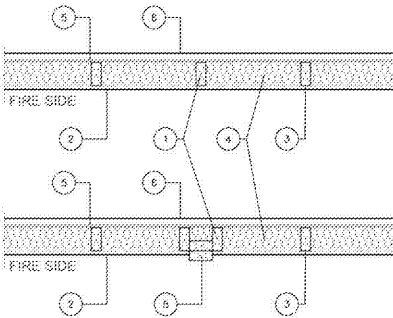
Bearing Wall Rating - 1 Hr Rating Exposed to Fire on Interior Face Only

Bearing Wall Rating - 1 Hr Rating Exposed to Fire on Exterior Face (See Item 66)

Finish Rating - 2 1/2 Hr Non 20 (See Item 2C)

This design was evaluated using a load design method other than the Limit States Design Method (i.e., Working Stress Design Method). Jurisdictions employing the Limit States Design Method, such as Canada, a load restricted factor shall be used - See Guide U302 or U307.

* Indicates such products shall bear the UL or cUL Certification Mark for jurisdictions employing the UL or cUL Certification (such as Canada), respectively.



1. Wood Studs - Nom 2 by 4 in. spaced 16 in. OC with two by 2 by 4 in. top and one 2 by 4 in. bottom panels. Studs secured to floor structural system (concrete, steel, etc.) with minimum depth of 1 1/2 in. to comply with the embedded cavity in accordance with the application instructions supplied with the product. See Finish, Sprayed (S2-A2).

2. Gypsum Board - As an alternate to Item 2 - 5/8 in. thick, Gypsum Board, with finished, square, or tapered edges, applied either horizontally or vertically. Gypsum panels fastened to framing with 1-1/4 in. long Type W coarse thread steel screws spaced a max 16 in. OC with the last screw 1 in. from edge of board. When used in walls other than 48 in. gypsum boards are to be installed horizontally.

3. Joint and Fastener Heads - (Not Shown) - Gypsum board joints covered with tape and joint compound. Fastener heads covered with joint compound.

4. Batts and Blankets - Mineral fiber or glass fiber insulation, 2-1/2 in. thick, ensure fit to seal cavity between studs and plates. Mineral fiber system to be unfaced or to have a minimum density of 1.1 lb/ft. Glass fiber insulation to be faced with aluminum foil or foil barrier and to have a minimum density of 1.9 lb/ft. (Normal installation only).

5. Wall and Partition Facings and Accessories - (As an alternate to Items 2 through 27) - Nominal 5/8 in. thick, 4 ft wide panels, applied vertically and secured as described in Item 4.

6. Non-Bearing Wall Partition Intersection - (Optional) - Two horizontal 2 by 4 in. stud or nominal 2 by 4 in. stud, spaced 16 in. OC, vertically. Intersection to be secured to floor structural system (concrete, steel, etc.) with minimum depth of 1 1/2 in. to comply with the embedded cavity in accordance with the application instructions supplied with the product. See Finish, Sprayed (S2-A2).

21. Gypsum Board* - (As an alternate to Item 2) - 5/8 in. thick gypsum panels, with finished, square, or tapered edges, applied either horizontally or vertically. Gypsum panels fastened to framing with 1-1/4 in. long Type W coarse thread gypsum panel screws spaced a max 16 in. OC with the last screw 1 in. from edge of board. When used in walls other than 48 in. gypsum boards are to be installed horizontally.

22. Gypsum Board* - (As an alternate to Item 2) - 5/8 in. thick gypsum panels, with finished, square, or tapered edges, applied either horizontally or vertically. Gypsum panels fastened to framing with 1-1/4 in. long Type W coarse thread steel screws spaced a max 16 in. OC with the last screw 1 in. from edge of board. When used in walls other than 48 in. gypsum boards are to be installed horizontally.

23. Fiber, Sprayed* - As an alternate to Items 2 and 4 - Spray applied cellulose fiber. The fiber is applied with water to completely fill the enclosed cavity in accordance with the application instructions supplied with the product. Nominal dry density of 4.50 lb/ft³.

24. Fiber, Sprayed* - As an alternate to Items 2 and 4 - Spray applied cellulose fiber. The fiber is applied with water to completely fill the enclosed cavity in accordance with the application instructions supplied with the product. The minimum dry density shall be 4.50 lb/ft³.

25. Wood Structural Panel Sheathing - Nom 7/16 in. thick, 4 ft wide wood structural panels, with grade 100 or 150 sheathing. Installed over studs and plates. Horizontal joints between panels to be staggered. Vertical joints between panels to be staggered. Vertical joints between panels to be staggered. Vertical joints between panels to be staggered.

26. Exterior Facings - Installed in accordance with the manufacturer's installation instructions. One of the following exterior facings is to be applied over the sheathing.

27. Steel Framing Members* - (Optional, Not Shown) - Framing channels and Steel Framing Members as described below.

28. Steel Framing Members* - (Optional, Not Shown) - Framing channels and Steel Framing Members as described below.

29. Steel Framing Members* - (Optional, Not Shown) - Framing channels and Steel Framing Members as described below.

30. Steel Framing Members* - (Optional, Not Shown) - Framing channels and Steel Framing Members as described below.

31. Steel Framing Members* - (Optional, Not Shown) - Framing channels and Steel Framing Members as described below.

32. Wall and Partition Facings and Accessories* - (As an alternate to Items 2 through 27) - Nominal 5/8 in. thick, 4 ft wide panels, applied vertically and secured as described in Item 4.

Design No. U301

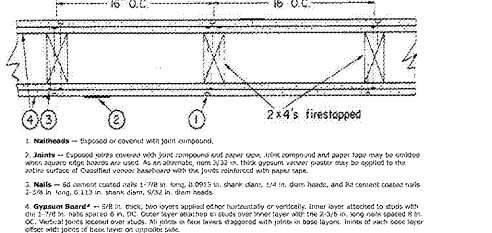
November 15, 2019

Bearing Wall Rating - 2 Hr

Finish Rating - 66 Min.

This design was evaluated using a load design method other than the Limit States Design Method (i.e., Working Stress Design Method). Jurisdictions employing the Limit States Design Method, such as Canada, a load restricted factor shall be used - See Guide U302 or U307.

* Indicates such products shall bear the UL or cUL Certification Mark for jurisdictions employing the UL or cUL Certification (such as Canada), respectively.



1. Wood Studs - Nom 2 by 4 in. spaced 16 in. OC with two by 2 by 4 in. top and one 2 by 4 in. bottom panels. Studs secured to floor structural system (concrete, steel, etc.) with minimum depth of 1 1/2 in. to comply with the embedded cavity in accordance with the application instructions supplied with the product. See Finish, Sprayed (S2-A2).

2. Gypsum Board - As an alternate to Item 2 - 5/8 in. thick gypsum panels, with finished, square, or tapered edges, applied either horizontally or vertically. Gypsum panels fastened to framing with 1-1/4 in. long Type W coarse thread steel screws spaced a max 16 in. OC with the last screw 1 in. from edge of board. When used in walls other than 48 in. gypsum boards are to be installed horizontally.

3. Joint and Fastener Heads - (Not Shown) - Gypsum board joints covered with tape and joint compound. Fastener heads covered with joint compound.

4. Batts and Blankets - Mineral fiber or glass fiber insulation, 2-1/2 in. thick, ensure fit to seal cavity between studs and plates. Mineral fiber system to be unfaced or to have a minimum density of 1.1 lb/ft. Glass fiber insulation to be faced with aluminum foil or foil barrier and to have a minimum density of 1.9 lb/ft. (Normal installation only).

5. Wall and Partition Facings and Accessories - (As an alternate to Items 2 through 27) - Nominal 5/8 in. thick, 4 ft wide panels, applied vertically and secured as described in Item 4.

6. Non-Bearing Wall Partition Intersection - (Optional) - Two horizontal 2 by 4 in. stud or nominal 2 by 4 in. stud, spaced 16 in. OC, vertically. Intersection to be secured to floor structural system (concrete, steel, etc.) with minimum depth of 1 1/2 in. to comply with the embedded cavity in accordance with the application instructions supplied with the product. See Finish, Sprayed (S2-A2).

7. Steel Framing Members* - (Optional, Not Shown) - Framing channels and Steel Framing Members as described below.

8. Steel Framing Members* - (Optional, Not Shown) - Framing channels and Steel Framing Members as described below.

9. Steel Framing Members* - (Optional, Not Shown) - Framing channels and Steel Framing Members as described below.

10. Wall and Partition Facings and Accessories* - (As an alternate to Items 2 through 27) - Nominal 5/8 in. thick, 4 ft wide panels, applied vertically and secured as described in Item 4.

40. Wall and Partition Facings and Accessories* - (As an alternate to Items 4 through 49) - Nominal 5/8 in. thick, 4 ft wide panels, applied vertically and secured as described in Item 4.

41. Gypsum Board* - (As an alternate to Item 4) - 5/8 in. thick, two layers applied either horizontally or vertically. Inner layer attached to studs and staggered one layer from the other. Outer layer attached to studs over inner layer with 1-7/8 in. long Type W coarse thread steel screws spaced a max 16 in. OC with the last screw 1 in. from edge of board. When used in walls other than 48 in. gypsum boards are to be installed horizontally.

42. Gypsum Board* - (As an alternate to Item 4) - 5/8 in. thick, two layers applied either horizontally or vertically. Inner layer attached to studs and staggered one layer from the other. Outer layer attached to studs over inner layer with 1-7/8 in. long Type W coarse thread steel screws spaced a max 16 in. OC with the last screw 1 in. from edge of board. When used in walls other than 48 in. gypsum boards are to be installed horizontally.

43. Fiber, Sprayed* - As an alternate to Items 4 and 41 - Spray applied cellulose fiber. The fiber is applied with water to completely fill the enclosed cavity in accordance with the application instructions supplied with the product. Nominal dry density of 4.50 lb/ft³.

44. Fiber, Sprayed* - As an alternate to Items 4 and 41 - Spray applied cellulose fiber. The fiber is applied with water to completely fill the enclosed cavity in accordance with the application instructions supplied with the product. The minimum dry density shall be 4.50 lb/ft³.

45. Wood Structural Panel Sheathing - Nom 7/16 in. thick, 4 ft wide wood structural panels, with grade 100 or 150 sheathing. Installed over studs and plates. Horizontal joints between panels to be staggered. Vertical joints between panels to be staggered. Vertical joints between panels to be staggered.

46. Exterior Facings - Installed in accordance with the manufacturer's installation instructions. One of the following exterior facings is to be applied over the sheathing.

47. Steel Framing Members* - (Optional, Not Shown) - Framing channels and Steel Framing Members as described below.

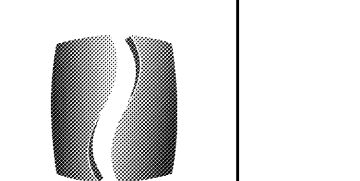
48. Steel Framing Members* - (Optional, Not Shown) - Framing channels and Steel Framing Members as described below.

49. Steel Framing Members* - (Optional, Not Shown) - Framing channels and Steel Framing Members as described below.

50. Wall and Partition Facings and Accessories* - (As an alternate to Items 4 through 49) - Nominal 5/8 in. thick, 4 ft wide panels, applied vertically and secured as described in Item 4.

51. Gypsum Board* - (As an alternate to Item 4) - 5/8 in. thick, two layers applied either horizontally or vertically. Inner layer attached to studs and staggered one layer from the other. Outer layer attached to studs over inner layer with 1-7/8 in. long Type W coarse thread steel screws spaced a max 16 in. OC with the last screw 1 in. from edge of board. When used in walls other than 48 in. gypsum boards are to be installed horizontally.

52. Wall and Partition Facings and Accessories* - (As an alternate to Items 4 through 49) - Nominal 5/8 in. thick, 4 ft wide panels, applied vertically and secured as described in Item 4.



KEYPLAN

CONSULTANT

SEAL

ISSUE & REVISION RECORD

Table with 3 columns: #, DATE, DESCRIPTION. Contains multiple rows for issue and revision tracking.

PROTOTYPE VERSION 2016 REV 12-21-18

40 STY 92' UNITS in WOOD/FR

FAIRFIELD BY MARRIOTT INN & SUITES

PROTOTYPE VERSION 2016 REV 12-21-18

40 STY 92' UNITS in WOOD/FR

FAIRFIELD DAWSON FOREST ROAD DAWSONVILLE, GA 30534

CLIENT

RIMROCK COMPANIES 10000 RIVERSIDE AVE SUITE 2201 JACKSONVILLE, FL 32204

PHILLIPS JOB NUMBER 1972101 ISSUE DATE 08/23/2019 DRAWN BY/CHECKED BY 2S/JU DRAWING TITLE FIRE RATED ASSEMBLIES-VERTICAL I SHEET NUMBER

A-0.1

5901 PEACHTREE DUNWOODY RD. BUILDING A, SUITE 450 ATLANTA, GEORGIA 30328 PHILLIPSPART.COM 770.384.1616

