

DAWSON COUNTY LANDSCAPE COMPLIANCE

HOTEL SITE AREA: 2.86 ACRES
 LIMITS OF DISTURBANCE FOR THIS PERMIT: 2.52
 NO EXISTING TREES - PAD READY SITE

PARKING LOT:
 1, 2" CAL. CANOPY TREE/7 SPACES
 EA. SPACE SHALL BE WITHIN 50 LF OF A TREE TRUNK
 MIN 1/3 MUST BE CANOPY TREE

PARKING SPACES REQUIRED: 102
 PARKING SPACES PROVIDED: 108 W/6 ADA SPACES
 108/7 = 15.42 OR 15 TREES

PARKING LOT 400 GUIDELINES:
 EACH ISLAND SHALL CONTAIN 1 CANOPY OR 2 UNDERSTORY
 PLANTING ISLANDS SHALL BE A MIN. OF 4' WIDE

TREE DENSITY:
 2.52 AC OR 109,771.2 SF - 11,461 SF (ESMT.) =
 98,310.2 SF OR 2.26 AC
 2.26 AC x 20 UNITS PER ACRE = 45.2 TDUs REQUIRED
 45.4 TDU PROVIDED
 MIN. 50% OVERSTORY/CANOPY

NO GENUS SHALL EXCEED 33% OF TOTAL TREES

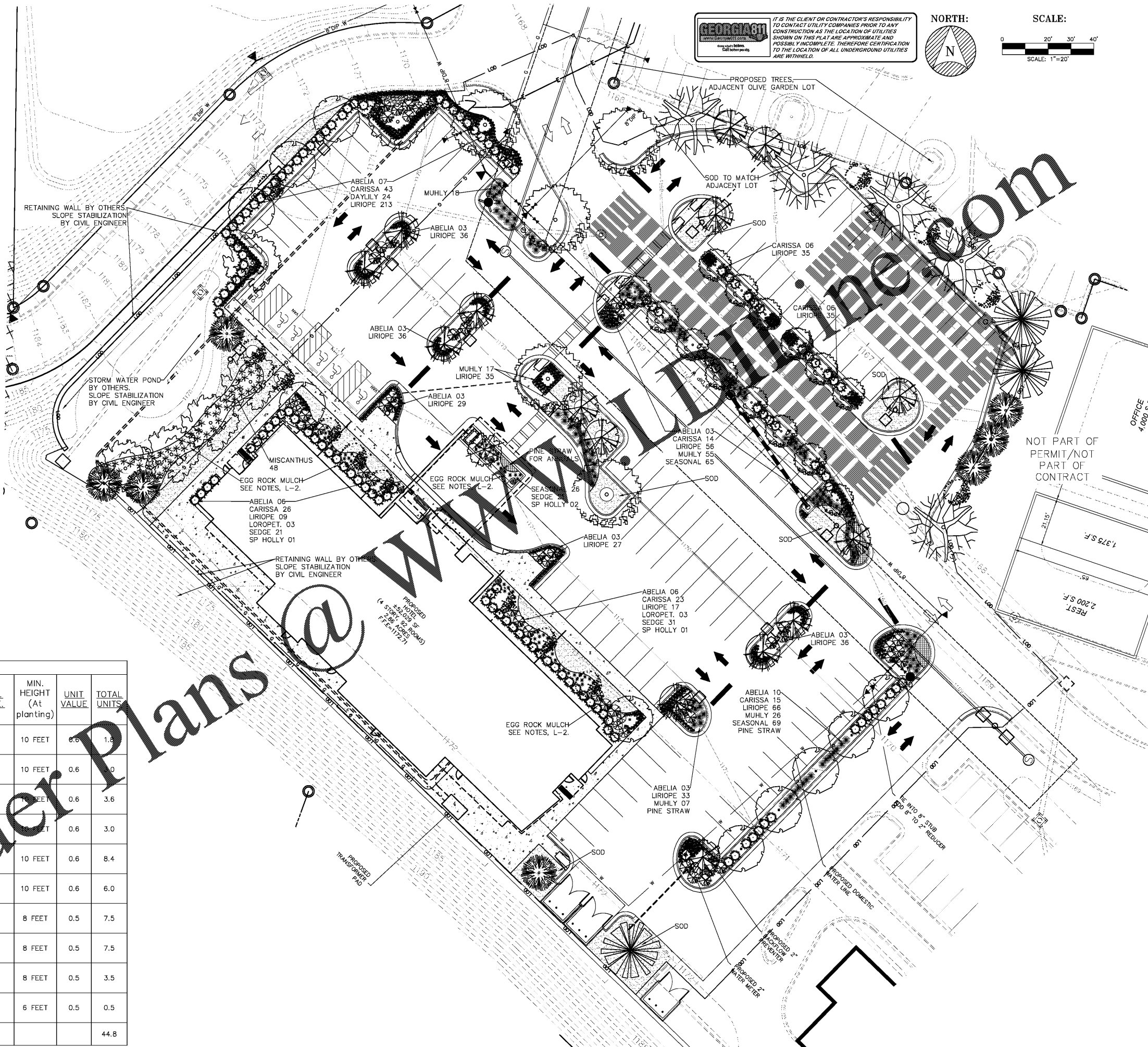
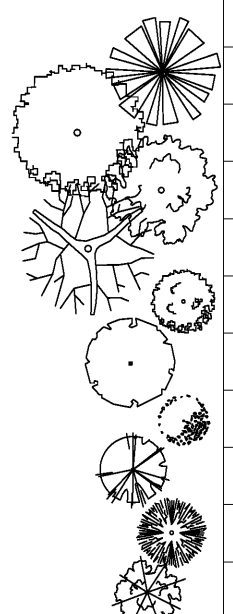
AUTOMATIC IRRIGATION, See notes

SHRUBS

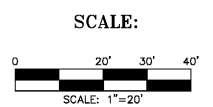
- 133 DWARF CARISSA HOLLY ILEX cornuta 'Carissa' 3 GAL.
- 123 PINK MUHLY GRASS MUHLENBERGIA capillaris 3 GAL.
- 04 SKY PENCIL HOLLY ILEX crenata 'Sky Pencil' 3 GAL.
- 50 EDWARD GOUCHER ABELIA ABELIA x 'Edward Goucher' 3 GAL.
- 06 DARUMA LOROPETALUM LOROPETALUM chinense 3 GAL.
- 48 ADAGIO MISCANTHUS MISCANTHUS sinensis 1 GAL.
- 24 STELLA D'ORA DAYLILY HEMEROCALLIS x 1 GAL.
- 73 EVERCOLOR EVERILLO SEDGE CAREX oshimensis 1 GAL.
- 663 SILVERY SUNPROOF LIRIOPE LIRIOPE muscari 1 QT.
- 160 SEASONAL/ANNUALS SEASONAL COLOR 4" POT

TREE SCHEDULE

QTY	COMMON NAME - BOTANICAL NAME	MIN. SIZE	MIN. HEIGHT (At planting)	UNIT VALUE	TOTAL UNITS
3	SOUTHERN MAGNOLIA - MAGNOLIA grandiflora OVERSTORY EVERGREEN - NATIVE		10 FEET	0.6	1.8
5	GREEN VASE ZELKOVA - ZELKOVA serrata 'Green Vase' OVERSTORY	3"	10 FEET	0.6	3.0
6	RED MAPLE 'OCTOBER GLORY' - ACER rubrum v. 'October Glory' OVERSTORY - NATIVE	3"	10 FEET	0.6	3.6
5	SHUMARD OAK - QUERCUS shumardii OVERSTORY - NATIVE		10 FEET	0.6	3.0
14	MUSASHINO COLUMNAR ZELKOVA - ZELKOVA serrata 'Musashino'; OVERSTORY		10 FEET	0.6	8.4
10	UPRIGHT EUROPEAN HORNBEAM - CARPINUS betulus 'stricta'; OVERSTORY	3"	10 FEET	0.6	6.0
15	REDBUD 'AVONDALE' - CERCIS chinensis 'Avondale'; UNDERSTORY	2"	8 FEET	0.5	7.5
15	OKAME CHERRY - PRUNUS x 'Okame' UNDERSTORY; STANDARD TRUNK	2"	8 FEET	0.5	7.5
7	BURKII EASTERN RED CEDAR - JUNIPERUS virginiana 'Burkii'; UNDERSTORY; NATIVE		8 FEET	0.5	3.5
1	HEFNERS RED SELECT JAPANESE MAPLE - ACER palmatum 'Hefner's Red Select'	2"	6 FEET	0.5	0.5
73	TOTAL TREES				44.8

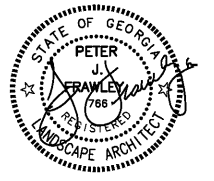


IT IS THE CLIENT OR CONTRACTOR'S RESPONSIBILITY TO CONTACT UTILITY COMPANIES PRIOR TO ANY CONSTRUCTION AS THE LOCATION OF UTILITIES SHOWN ON THIS PLAN ARE APPROXIMATE AND POSSIBLY INCOMPLETE. THEREFORE CERTIFICATION TO THE LOCATION OF ALL UNDERGROUND UTILITIES ARE WITHHELD.



REVISIONS:

DATE	#
-	-
-	-
-	-
-	-
-	-
-	-
-	-
-	-
-	-



FRAWLEY ASSOCIATES, ILLC.
 LANDSCAPE ARCHITECTS
 675 SEMINOLE AVE (SUITE 101)
 ATLANTA, GA 30307 (404) 874-5091

FAIRFIELD INN
 DAWSON FOREST RD AND GA HWY 400
 DAWSONVILLE, GEORGIA

LANDSCAPE PLAN

SCALE: AS SHOWN
 DATE: 08/02/19
 PROJECT: FA-19256
 SHEET
L-1
 SHEET 1 OF 2