

2/21/2019 10:48:56 AM P:\COMMERCIAL\2018 PROJECT IN-BOX\2018-207 Elisha Winn Restrooms2. Drawing Info.c Revit2018-207 Elisha Winn M19.rvt
 © Copyright 2014 by Croft & Associates, PC. All rights reserved. This document is property of Croft & Associates, PC. It is to be used only for the specific project referred to or identified herein and is not to be used on other projects, in whole or in part, except by the express written agreement of Croft & Associates, PC.

1 2 3 4 5 6 7 8 9 10 11 12 13 14 15 16 17 18 19

FAN SCHEDULE

Mark	Manufacturer (or Approved Equal)	Model	Type	Drive	VFD	Service	MAX Airflow (CFM)	EXT. SPD (inH2O)	Power	Volts	Ph	Weight (lbs)	Notes
EF-1	GREENHECK	SQ-90-VG	INLINE	DIRECT	YES	RESTROOMS/UTILITY	350	0.375	1/10 HP	208	1	49	1,2

GENERAL NOTES:
 A) All fans shall be UL-listed, and sound levels and performance ratings shall be AMCA-Certified.
 B) Weights shown are for fan only.
NOTES:
 1) Fan shall run continuously.
 2) Provide speed controller.

ELECTRIC UNIT HEATER SCHEDULE

MARK	DESCRIPTION	SERVICE	MANUFACTURER (OR APPROVED EQUAL)	MODEL	NOMINAL OUTPUT (KW)	VOLTS	PH	MOUNT TYPE	MOUNT HEIGHT	WEIGHT	NOTES
UH-1	CEILING SURFACE MOUNTED UNIT HEATER	MEN 7	REZNOR	ECS-7	7.50	208	1	RECESSED	CEILING	34	1
UH-2	CEILING SURFACE MOUNTED UNIT HEATER	WOMEN 9	REZNOR	ECS-7	7.50	208	1	RECESSED	CEILING	34	1
UH-3	COMMERCIAL-DUTY UNIT HEATER	UTILITY 8	MARKEL	F2F5105N	5.00	208	1	WALL	8'	25	1, 2

GENERAL NOTES:
 A) Furnish and install factory mounting kit for the installation type indicated for each unit heater.
NOTES:
 1) Provide integrated factory-provided tamper-proof thermostat. Set to 60°F
 2) Provide mounting bracket.
FOOTNOTES:
 i) Mounting heights specified are as measured from finished floor or grade to bottom of unit heater

DIFFUSER AND AIR TERMINAL SCHEDULE

Mark	Description	Service	Face Size (IN)	Neck Size (IN)	Manufacturer (or Approved Equal)	Model	AIRFLOW CHARACTERISTICS					Notes	
							Max Airflow (CFM)	Pressure @ Max Airflow (in.Wg.)	Throw (ft)				N.C. Rating @ Max Airflow
									150 fpm	100 fpm	50 fpm		
S1	ARCHITECTURAL DIFFUSER - SQUARE	SUPPLY	12X12	8	TITUS	OMNI	157	0.194	4	6	12	21	1
E1	PERFORATED FACE DIFFUSER - SQUARE	EXHAUST	12X12	6	TITUS	PAR	157	0.113	-	-	-	25	1
ATG	STEEL AIR TRANSFER GRILLE	-	12X18	-	TITUS	33R	-	-	-	-	-	-	-

GENERAL NOTES:
 Diffusers shall have factory finish. Coordinate finish with architect.
 Coordinate air terminal and diffuser locations with architectural ceiling plans and electrical lighting plan.
 Duct runouts to air terminals and diffusers shall be the same nominal size as the diffuser neck, unless otherwise noted.
 Air terminals and diffusers shall not have a Noise Criterion (NC) rating greater than scheduled at the airflow indicated on the floorplans.
 Static pressure drop through any air terminal or diffuser shall not be greater than scheduled at the airflow indicated on the floorplans.
 Noise Criterion (N.C.) ratings shall be AMCA-Certified.
EQUIPMENT NOTES:
 1) Include factory-installed molded diffuser-top insulation blanket (minimum R-6 insulation value).

- GENERAL NOTES - NEW CONSTRUCTION:**
- THESE DRAWINGS ARE SCHEMATIC, AND ARE NOT REPRESENTATIVE OF ALL POTENTIAL CONDITIONS. CONTRACTOR IS RESPONSIBLE FOR COORDINATION WITH ALL OTHER DISCIPLINES TO ENSURE PROPER INSTALLATION OF ALL SYSTEMS AND EQUIPMENT.
 - CONTRACTOR SHALL MAINTAIN A VALID LICENSE TO PERFORM MECHANICAL WORK IN THE STATE OF GEORGIA. REFER TO ARCHITECTURAL CEILING PLAN FOR EXACT LOCATION OF ALL CEILING-MOUNTED EQUIPMENT AND AIR DISTRIBUTION DEVICES.
 - COORDINATE VOLTAGE AND PHASE OF EACH PIECE OF EQUIPMENT WITH THE ELECTRICAL CONTRACTOR PRIOR TO PURCHASE.
 - CONTRACTOR SHALL MAINTAIN MINIMUM 10'-0" CLEARANCE BETWEEN ALL EXHAUST / VENT OUTLETS AND OUTSIDE AIR INTAKES. COORDINATE WITH PLUMBING AND ROOFING CONTRACTORS PRIOR TO INSTALLATION AND ROOFING. REFER TO MANUFACTURER'S INSTALLATION CLEARANCE REQUIREMENTS FOR ALL HVAC EQUIPMENT. CONTRACTOR SHALL COORDINATE REQUIRED CLEARANCES WITH ALL TRADES PRIOR TO BEGINNING WORK.

HVAC LEGEND-SYMBOL

AMB	ITEM	AIR DEVICE TAG
A	ACCESS DOOR	DEVICE TYPE MARK
B.E	ABOVE FINISHED FLOOR	NECK SIZE (IN.)
B.F	BOTTOM ELEVATION	###
F.C	FLEXIBLE CONNECTION	XXX
N.T.S.	NOT TO SCALE	
O.A.	OUTSIDE AIR	
R.A.	RETURN AIR	
TYP.	TYPICAL	AIRFLOW (CFM)
	FLEXIBLE CONNECTION	
	RETURN AIR DIFFUSER	
	SUPPLY AIR DIFFUSER	
	FLEXIBLE DUCTWORK	
	KEYED NOTE TAG	



Croft & Associates
 3400 Blue Springs Road, Suite 200
 Kennesaw, Georgia 30144
 770.529.7714 (p) 770.529.7716 (f)
 www.croftandassociates.com

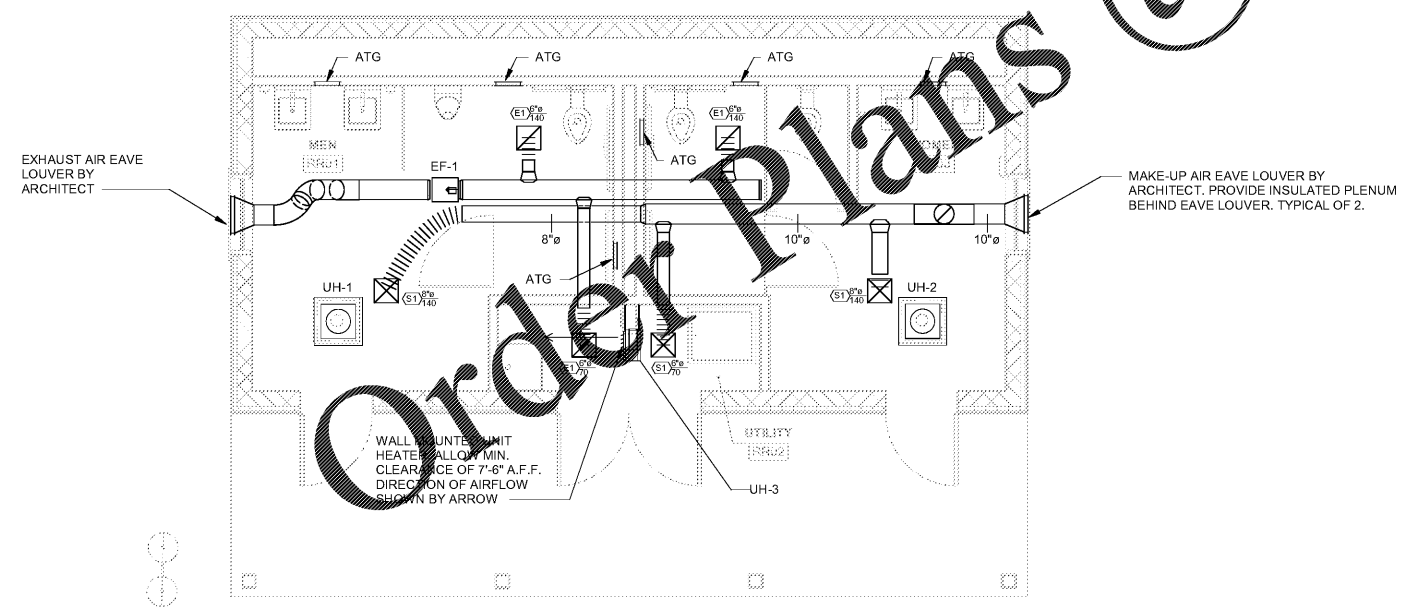
OWNER
 GWINNETT COUNTY
 DACULA, GEORGIA 30019

ELISHA WINN HOUSE
 RESTROOM BUILDING
 IMPROVEMENTS

B	2019-02-12	PERMIT SET
A	2018-11-13	
No.	Date	Description
ISSUANCE		

PROJECT NUMBER
2018-207
 DRAWN: AJB CHECKED: VLM
 SHEET TITLE
MECHANICAL PLAN

SHEET NO.
M-101



A2 M-101 MECHANICAL PLAN
 1/4" = 1'-0"
 0 1 5 FT

www.LDILine.com @