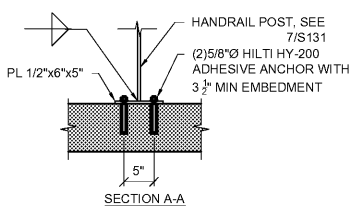
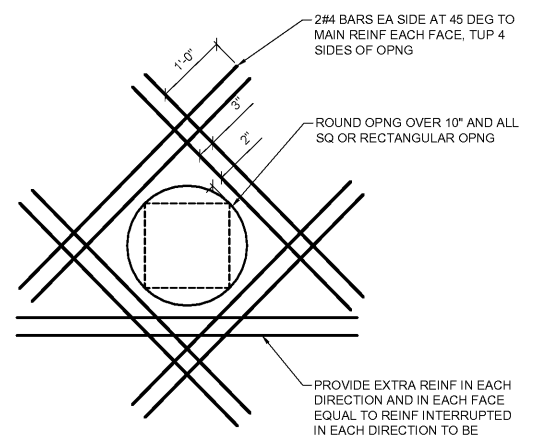


HEIGHT	BASE						REINFORCING BARS					
	W	A	B	C	D		DOWELS	M	N	TEMP	P	L
12'-0"	10'-9"	1'-3"	1'-0"	8'-6"	2'-0"		#7@12"	#7@12"	#6@12"	#4@12"	#6@12"	16#5
10'-0"	7'-6"	1'-0"	1'-0"	5'-6"	1'-8"		#6@12"	#6@12"	#4@12"	#6@12"		10#5
8'-0"	6'-0"	1'-0"	1'-0"	4'-0"	1'-4"		#5@12"	#5@12"	#4@12"	#5@12"		10#5
6'-0"	4'-0"	1'-0"	1'-0"	2'-0"	1'-4"		#4@12"	#4@12"	#4@12"	#4@12"		8#5
4'-0"	3'-0"	1'-0"	1'-0"	1'-0"	1'-0"		#4@12"	#4@12"	#4@12"	#4@12"		6#5



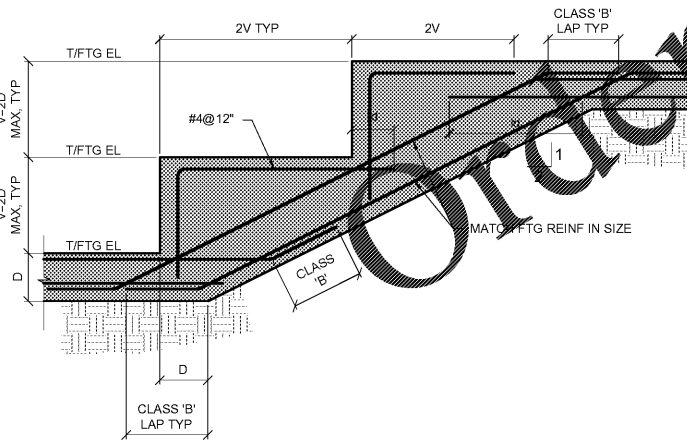
- NOTES:
- FOR INFORMATION NOT SHOWN, SEE ARCH AND CIVIL.
  - SEE CIVIL FOR INTEGRAL COLOR ADDITIVE INFORMATION.
  - REFERENCE 11/S131 FOR REINFORCEMENT AT WALL OPENINGS.
  - SEE ARCH FOR ALL HANRAIL DIMENSIONS AND HARDWARE.
  - SEE 7/S132 FOR SPLICE TABLES.
  - SEE 2/S132 FOR WALL JOINTS.
  - PROVIDE POST AT ALL WALL ENDS, CORNERS, AND EQUALLY SPACED MAX 4'-0" O.C. ALONG LENGTH OF RAMP.

**12** SURFACE MOUNTED HANRAIL AT RAMP TRANSITION  
3/4" = 1'-0"

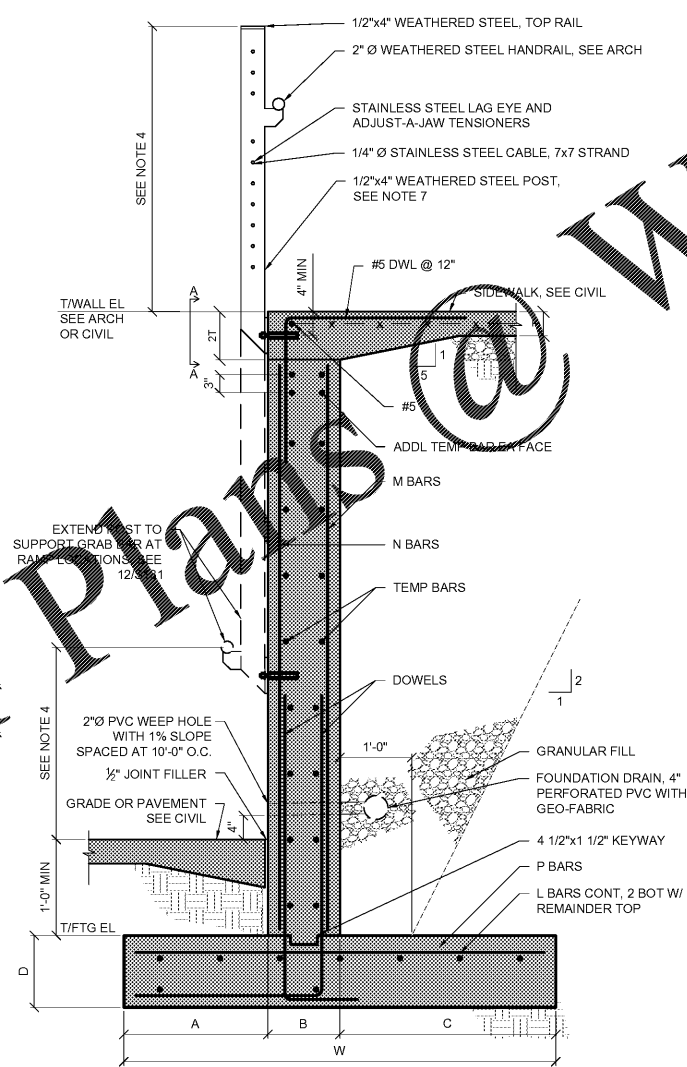
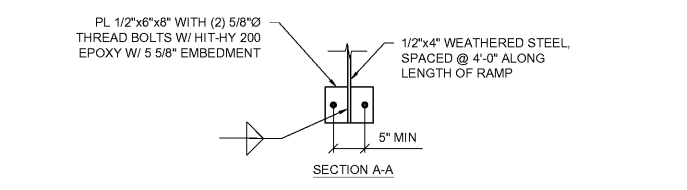


NOTE: ALL OPNG TO BE SPACED A MIN OF 3 TIMES THE DIA FOR ROUND OPNG AND 3 TIMES THE HORIZ OR VERT DIMENSION OF SQ OR RECTANGULAR OPNG.

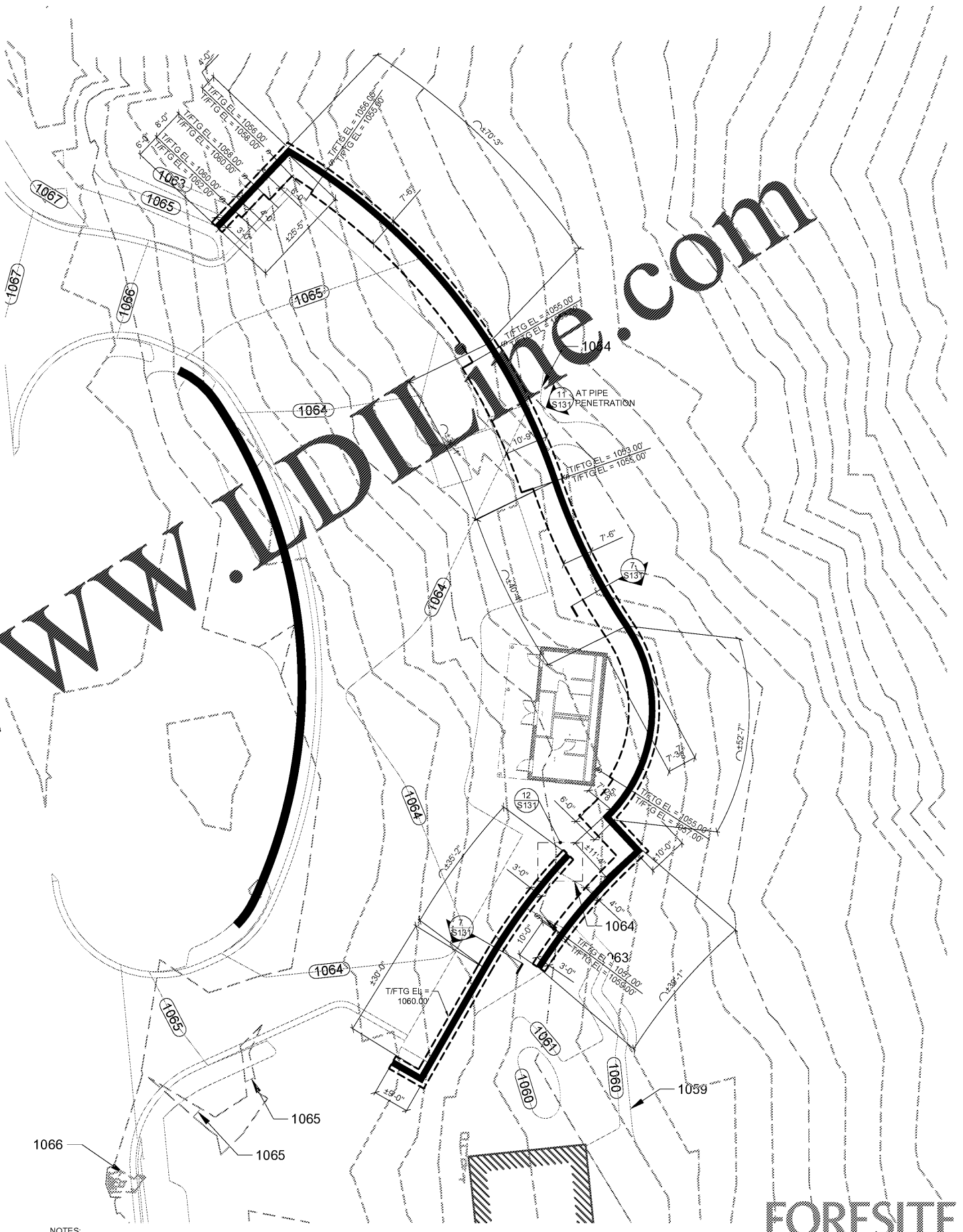
**11** TYPICAL CONCRETE WALL AT OPENING (AREA <= 8 SF)  
3/4" = 1'-0"



**10** TYPICAL STEPPED FOOTING TOP AND BOTTOM REINFORCING  
3/4" = 1'-0"



**7** TYPICAL RETAINING WALL  
3/4" = 1'-0"



**4** RETAINING WALL FOUNDATION PLAN  
1/16" = 1'-0"

**LORD AECK SARGENT**  
© 2018 Lord Aeck Sargent  
LordAeckSargent.com  
Unless otherwise agreed to in writing, this document is the sole property of Lord Aeck Sargent and is to be returned upon demand. The information herein is confidential and may not be used or divulged without the written permission of Lord Aeck Sargent.

REVISION

REGISTERED PROFESSIONAL ENGINEER  
MARIE WEAVER

SHEET TITLE: RETAINING WALL FOUNDATION PLAN  
SCALE: AS SHOWN

JOB NAME: GWINNETT COUNTY  
LOCATION: ELISHA WINN HOUSE  
908 DACULA RD DACULA, GEORGIA 30019

ISSUE DATE: 2/12/2019  
JOB NO: 10958-00  
DWG NO:

ForeSITE group  
ForeSite Group, Inc. | www.fg-inc.net  
3740 Davinci Court, Suite 100 | 770.368.1399  
Peachtree Corners, GA 30092 | 770.368.1944

**S131**