

GENERAL NOTES:

THE SITE PLAN WAS DIGITALLY PROVIDED BY FORESITE GROUP, INC., ELISHA WINN HOUSE SITE IMPROVEMENTS DATED AUGUST 10, 2018, SEALED FEBRUARY 12, 2019.

THIS ON-SITE SEWAGE MANAGEMENT SYSTEM LAYOUT WAS PREPARED AT THE INSTRUCTION OF AND FOR THE USE OF FORESITE GROUP, INC.; CERTIFICATION IS NOT EXTENDED TO OTHERS. ANY MODIFICATION OR DEVIATION FROM THIS PLAN WITHOUT WRITTEN APPROVAL FROM MONARCH ENGINEERING AND CONSULTING, INC. VOIDS THE CERTIFICATION OF THIS DRAWING.

UTILITIES MAY EXIST IN LOCATIONS NOT SHOWN. CALL THE UTILITY PROTECTION CENTER (811) 3 DAYS BEFORE EXCAVATION.

ON-SITE SEWAGE MANAGEMENT NOTES:

THE RECOMMENDED TRENCH DEPTH AND ESTIMATED PERCOLATION RATE USED TO LAYOUT AND SIZE THE ON-SITE SEWAGE MANAGEMENT SYSTEM IS FROM THE LEVEL 3 SOIL SURVEY REPORT PREPARED BY GEORGIA SOIL MAPPING, INC. DATED DECEMBER 20, 2018.

THE ABSORPTION FIELD MUST BE STAKED BY A PROFESSIONAL SURVEYOR PRIOR TO INSTALLING THE ON-SITE SEWAGE MANAGEMENT SYSTEM TO ENSURE PROPER SETBACKS ARE MAINTAINED.

THE PROPOSED ABSORPTION FIELD AREA MUST BE PROTECTED AT ALL TIMES, PARTICULARLY DURING CONSTRUCTION ACTIVITIES. ONLY TRACK TYPE EQUIPMENT SHOULD BE ALLOWED ON THE ABSORPTION FIELD AREA TO AVOID RUTTING THE SITE AND POSSIBLY DAMAGING THE ABSORPTION FIELD.

NO GRADING IS PROPOSED IN THE ABSORPTION FIELD AREAS.

ALL STORMWATER RUNOFF MUST BE DIVERTED AWAY FROM ON-SITE SEWAGE MANAGEMENT SYSTEM.

PROPER INSTALLATION AND MAINTENANCE OF THE ON-SITE SEWAGE MANAGEMENT SYSTEM IS ESSENTIAL TO ACHIEVE THE DESIRED TREATMENT OF THE EFFLUENT AND ENSURE LONGEVITY OF THE ABSORPTION FIELD.

SEPTIC TANK SPECIFICATIONS:

SEPTIC TANK SIZE: 1,500 GALLONS

EFFLUENT FILTER: 1/32" FILTRATION; ZABEL A300-BX26-VC OR EQUIVALENT

ABSORPTION FIELD SPECIFICATIONS:

SOIL SERIES AND SLOPE: MADISON & HARD LABOR II, 2-15%

PERCOLATION RATES: MADISON - 45 MIN/IN, HARD LABOR II - 90 MIN/IN

DESIGN WASTEWATER FLOW: 5 GPD/PERSON * 150 PEOPLE = 750 GPD

MINIMUM CONVENTIONAL ABSORPTION LINE LENGTH: (9.489/5 * 750 GPD) / 3 FT = 475 L.F.

MINIMUM CHAMBER ABSORPTION LINE LENGTH: 475 L.F. * 0.65 = 309 L.F. (90 MIN/IN PERCOLATION RATE)

ABSORPTION LINE DEPTH: 24 INCHES

PRIMARY ABSORPTION LINE LENGTH: 312 L.F. (CHAMBER, TYP.)

REPAIR ABSORPTION LINE LENGTH: 340 L.F. (CONVENTIONAL; 45 MIN/IN PERCOLATION RATE)

ABSORPTION LINE WIDTH: 36 INCHES

THE ABSORPTION FIELD MUST BE INSTALLED DURING DRY WEATHER CONDITIONS TO AVOID SMEARING THE TRENCH SURFACES AND/OR DAMAGING THE SOIL STRUCTURE, WHICH COULD RESULT IN POOR PERFORMANCE OF THE ABSORPTION FIELD.

ONCE THE ABSORPTION LINES ARE INSTALLED, THE DISTURBED AREA(S) MUST BE IMMEDIATELY STABILIZED WITH APPROPRIATE EROSION AND SEDIMENT CONTROL BMPs TO MINIMIZE SOIL EROSION AND PREVENT DAMAGE TO THE ABSORPTION FIELD.

PROPERTY INFORMATION:

LAND LOT 1, 2ND DISTRICT, ZONE R-100
GWINNETT COUNTY, GEORGIA

PARCEL NO.: R2001 158

908 DACULA ROAD
DACULA, GEORGIA 30019

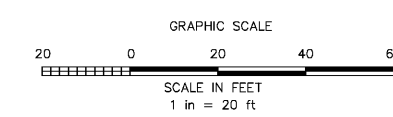
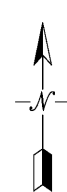
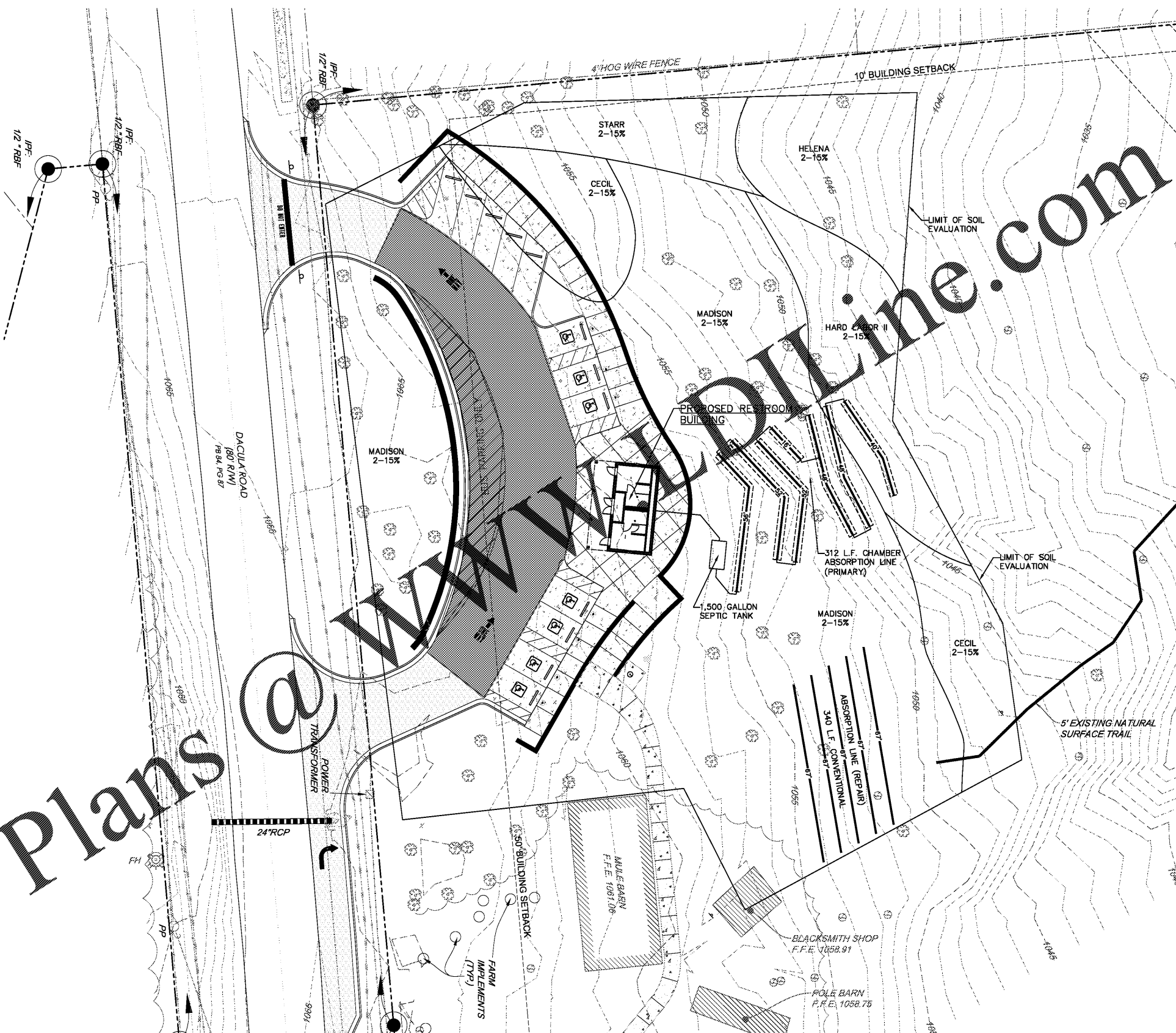
OWNER/DEVELOPER:

REX SCHUDER
(770) 822-8864
GWINNETT COUNTY
75 LANGLEY DRIVE
LAWRENCEVILLE, GEORGIA 30046

CIVIL ENGINEER:

JASON T. COPENHAVER, PE
(770) 368-1399
FORESITE GROUP, INC.
3740 DAVINCI COURT
SUITE 100
PEACHTREE CORNERS, GEORGIA 30092

Order Plans @ WantedPlans@WantedPlans.com



ON-SITE SEWAGE MANAGEMENT SYSTEM LAYOUT
ELISHA WINN HOUSE
908 DACULA ROAD, DACULA, GWINNETT COUNTY, GEORGIA

PROJECT NO.: 1852-1
SHEET 1 OF 1
DATE: 03/04/2019
DRAWN BY: TMM
FILE: \\1852\ForeSite_Elisha Winn_OSSMS

SOURCE: Site Grading Plan Provided by Foresite Group, Inc., Dated 8/10/18, Sealed 2/12/19.

DATE: _____ REVISIONS: _____

Monarch
Engineering and Consulting, Inc.
2865 WOODLAND HILLS DRIVE
CUMMING, GEORGIA 30040
PHONE (678) 947-1261