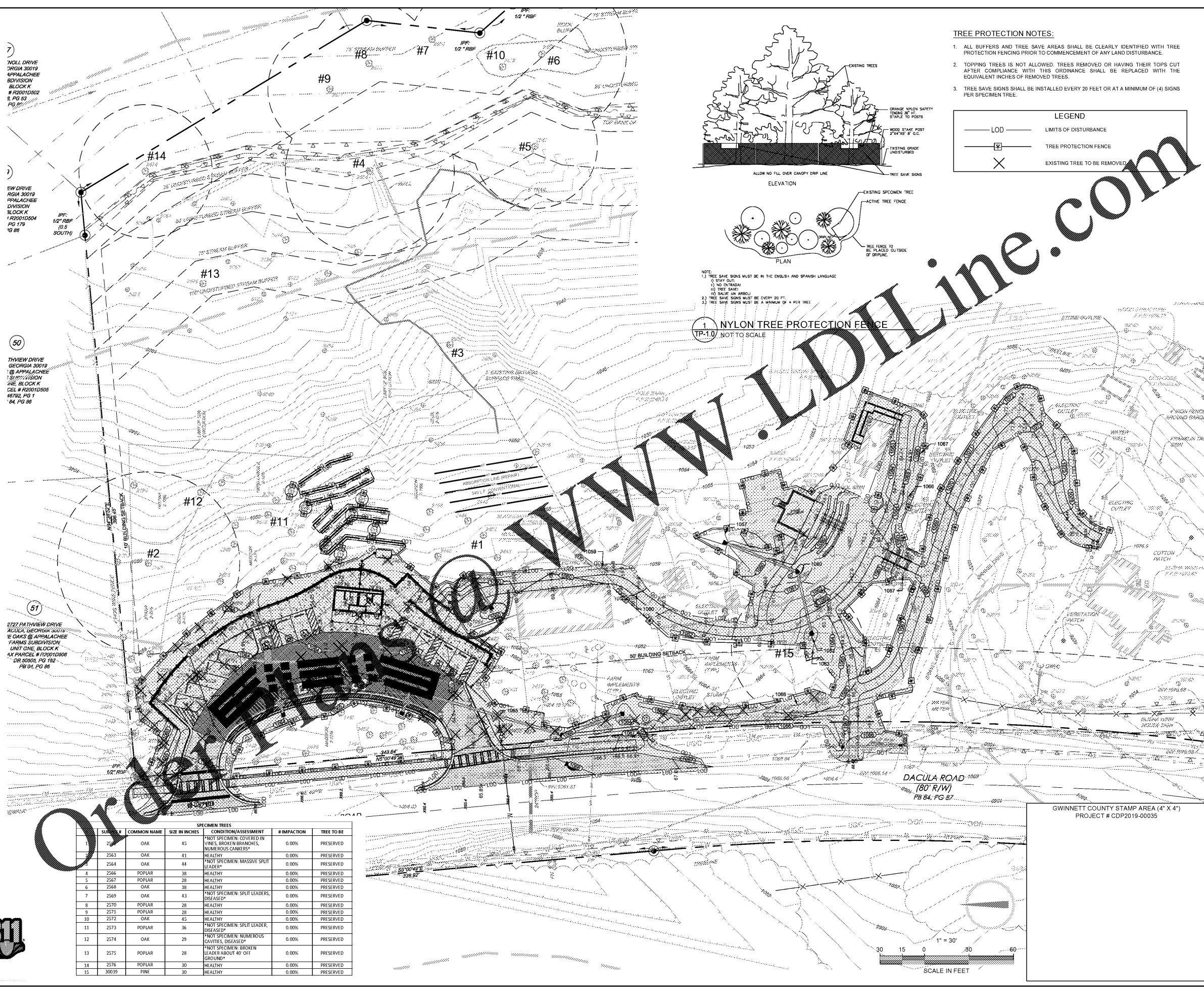
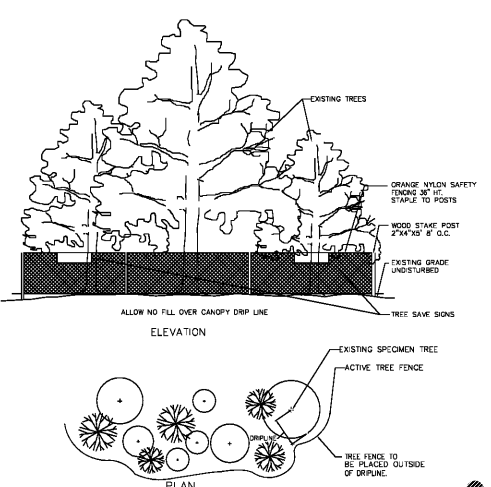
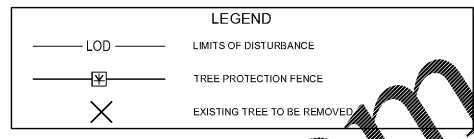


REMAINING TREES				
SIZE IN INCHES	QTY	TDU	TOTAL	
3	0	0.75	0	
4	6	0.90	5.4	
5	1	1.05	1.05	
6	4	1.35	5.4	
7	2	1.50	3	
8	13	1.65	21.45	
9	8	1.80	14.4	
10	13	1.95	25.35	
11	13	2.10	27.3	
12	16	2.40	38.4	
13	12	2.70	32.4	
14	8	3.30	26.4	
15	9	3.60	32.4	
16	8	4.20	33.6	
17	13	4.80	62.4	
18	6	5.40	32.4	
19	5	6.00	30	
20	2	6.60	13.2	
21	5	7.20	36	
22	3	7.80	23.4	
23	3	8.70	26.1	
24	6	9.30	55.8	
25	4	10.20	40.8	
26	4	11.10	44.4	
27	3	12.00	36	
28	6	12.90	77.4	
29	3	13.80	41.4	
30	2	14.70	29.4	
31	0	15.60	0	
32	0	16.80	0	
33	0	17.70	0	
34	0	18.90	0	
35	0	20.10	0	
36	1	21.30	21.3	
37	0	22.50	0	
38	2	23.70	47.4	
39	0	24.90	0	
40	0	26.10	0	
41	1	27.60	27.6	
42	0	28.80	0	
43	1	30.30	30.3	
44	1	31.80	31.8	
45	2	33.00	66	
TOTAL			815.25	

REMOVED TREES				
SIZE IN INCHES	QTY	TDU	TOTAL	
3	0	0.75	0	
4	0	0.90	0	
5	0	1.05	0	
6	0	1.35	0	
7	0	1.50	0	
8	4	1.65	6.6	
9	2	1.80	3.6	
10	5	1.95	9.75	
11	5	2.10	10.5	
12	2	2.40	4.8	
13	2	2.70	5.4	
14	10	3.30	33	
15	0	3.60	0	
16	7	4.20	29.4	
17	3	4.80	14.4	
18	2	5.40	10.8	
19	1	6.00	6	
20	0	6.60	0	
21	0	7.20	0	
22	1	7.80	7.8	
23	0	8.70	0	
24	1	9.30	9.3	
25	1	10.20	10.2	
26	0	11.10	0	
27	0	12.00	0	
28	0	12.90	0	
29	1	13.80	13.8	
30	0	14.70	0	
31	0	15.60	0	
32	0	16.80	0	
33	0	17.70	0	
34	0	18.90	0	
35	0	20.10	0	
36	0	21.30	0	
37	0	22.50	0	
38	0	23.70	0	
39	0	24.90	0	
40	0	26.10	0	
41	0	27.60	0	
42	0	28.80	0	
43	0	30.30	0	
44	0	31.80	0	
45	0	33.00	0	
TOTAL			175.35	



- TREE PROTECTION NOTES:**
- ALL BUFFERS AND TREE SAVE AREAS SHALL BE CLEARLY IDENTIFIED WITH TREE PROTECTION FENCING PRIOR TO COMMENCEMENT OF ANY LAND DISTURBANCE.
 - TOPPING TREES IS NOT ALLOWED. TREES REMOVED OR HAVING THEIR TOPS CUT AFTER COMPLIANCE WITH THIS ORDINANCE SHALL BE REPLACED WITH THE EQUIVALENT INCHES OF REMOVED TREES.
 - TREE SAVE SIGNS SHALL BE INSTALLED EVERY 20 FEET OR AT A MINIMUM OF (4) SIGNS PER SPECIMEN TREE.



NOTE:
 1) TREE SAVE SIGNS MUST BE IN THE ENGLISH AND SPANISH LANGUAGE.
 2) STAY OUT!
 3) NO INTRUSION!
 4) TREE SAFE!
 5) MAKE AN ARROW!
 6) TREE SAFE!
 7) TREE SAFE!
 8) TREE SAFE!
 9) TREE SAFE!
 10) TREE SAFE!
 11) TREE SAFE!
 12) TREE SAFE!
 13) TREE SAFE!
 14) TREE SAFE!
 15) TREE SAFE!

1 NYLON TREE PROTECTION FENCE
 TP-10 NOT TO SCALE

7) NOLL DRIVE
 GEORGIA 30019
 APPALACHEE
 DIVISION
 BLOCK K
 # P2001D502
 9, PG 83
 PG 85

8) EW DRIVE
 GEORGIA 30019
 APPALACHEE
 DIVISION
 BLOCK K
 # P2001D504
 PG 178
 PG 86

9) THVIEW DRIVE
 GEORGIA 30019
 APPALACHEE
 DIVISION
 BLOCK K
 CEL # P2001D505
 #192, PG 1
 #4, PG 86

10) 5727 PATHVIEW DRIVE
 Dacula, GEORGIA 30019
 E OAKS @ APPALACHEE
 FARMS SUBDIVISION
 UNIT ONE, BLOCK K
 AX PARCEL # P2001D506
 DR 50505, PG 182
 PB 84, PG 88

SPECIMEN #	COMMON NAME	SIZE IN INCHES	CONDITION/ASSESSMENT	# IMPACT	TREE TO BE
2	OAK	45	"NOT SPECIMEN: COVERED IN VINES, BROKEN BRANCHES, NUMEROUS CANKERS"	0.00%	PRESERVED
2563	OAK	41	HEALTHY	0.00%	PRESERVED
2564	OAK	44	"NOT SPECIMEN: MASSIVE SPLIT LEADER"	0.00%	PRESERVED
2566	POPLAR	38	HEALTHY	0.00%	PRESERVED
2567	POPLAR	28	HEALTHY	0.00%	PRESERVED
2568	OAK	38	HEALTHY	0.00%	PRESERVED
2569	OAK	43	"NOT SPECIMEN: SPLIT LEADERS, DISEASED"	0.00%	PRESERVED
2570	POPLAR	28	HEALTHY	0.00%	PRESERVED
2571	POPLAR	28	HEALTHY	0.00%	PRESERVED
2572	OAK	45	HEALTHY	0.00%	PRESERVED
2573	POPLAR	36	"NOT SPECIMEN: SPLIT LEADER, DISEASED"	0.00%	PRESERVED
2574	OAK	29	"NOT SPECIMEN: NUMEROUS CAVITIES, DISEASED"	0.00%	PRESERVED
2575	POPLAR	28	"NOT SPECIMEN: BROKEN LEADER ABOUT 40' OFF GROUND"	0.00%	PRESERVED
2576	POPLAR	30	HEALTHY	0.00%	PRESERVED
30039	PINE	30	HEALTHY	0.00%	PRESERVED

ENGINEER:
FORESITE group
 Foresite Group, Inc. w | www.fg-inc.net
 3740 Davinci Ct. o | 770.368.1399
 Suite 100 f | 770.368.1944
 Peachtree Corners, GA 30092

DEVELOPER:
GWINNETT COUNTY - GEORGIA
 ESTABLISHED 1838
 75 LANGLEY DR.
 LAWRENCEVILLE, GEORGIA 30046
 770-822-8864
 CONTACT: MR. REX SCHUDER

PROJECT:
ELISHA WINN HOUSE
 SITE IMPROVEMENTS
 908 DACULA RD
 DACULA, GA 30019
 LL # 1, DISTRICT 2, ZONE R-100

SEAL:

 4/08/19

REVISIONS	DATE
GWINNETT CO. RESUBMITTAL	03/20/2019

PROJECT MANAGER: AWP
 DRAWING BY: SSH
 JURISDICTION: GWINNETT COUNTY
 DATE: 08/10/2018
 SCALE: 1" = 30'
 TITLE: TREE PROTECTION PLAN

TREE PROTECTION PLAN
 SHEET NUMBER: TP-1
 COMMENTS: RELEASED FOR CONSTRUCTION
 JOB/FILE NUMBER: 223.082

GEORGIA811
 Utilities Protection Center, Inc.
 Know what's below.
 Call before you dig.

© 2023 LD LINE, INC. ALL RIGHTS RESERVED. THIS PROTECTION PLAN IS A SERVICE OF LD LINE, INC. BY ANTHONY HALL, SENIOR ENGINEER.