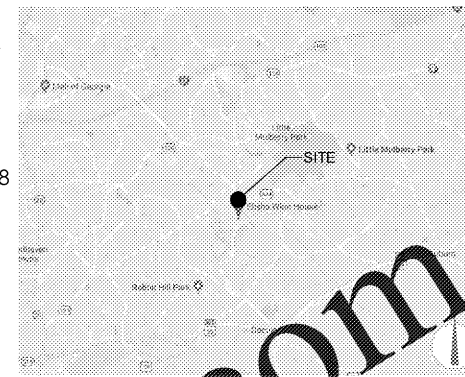


ELISHA WINN HOUSE, SITE IMPROVEMENTS

908 DACULA RD
DACULA, GA 30019
LL # 1, DISTRICT 2, ZONE R-100, PARCEL #: R2001 158
ZONED: R-100

OWNER / DEVELOPER
GWINNETT COUNTY
75 LANGLEY DRIVE
LAWRENCEVILLE, GA 30046
770-822-8864
CONTACT: MR. REX SCHUDER

PROJECT MANAGER
FORESITE GROUP, INC.
3740 DAVINCI CT., SUITE #100
PEACHTREE CORNERS, GA 30092
770-368-1399
CONTACT: MR. ANTHONY PAPPAS



VICINITY MAP
NOT TO SCALE

ENGINEER
FORESITE group
Foresite Group, Inc. | www.fg-inc.net
3740 Davinci Ct. | 770.368.1399
Suite 100 | 770.368.1944
Peachtree Corners, GA 30092

DEVELOPER
GWINNETT COUNTY - GEORGIA
ESTABLISHED 1828
75 LANGLEY DR.
LAWRENCEVILLE, GEORGIA 30046
770-822-8864
CONTACT: MR. REX SCHUDER

PROJECT:
ELISHA WINN HOUSE
SITE IMPROVEMENTS
908 DACULA RD
DACULA, GA 30019
LL # 1, DISTRICT 2, ZONE R-100

SEAL:
Jonathan H. Ballard
JONATHAN H. BALLARD
LANDSCAPE ARCHITECT
GWINNETT COUNTY, GEORGIA
4/08/19

REVISIONS DATE
GWINNETT CO. RESUBMITAL 03/20/2019

PROJECT MANAGER: AWP
DRAWING BY: KCN
JURISDICTION: GWINNETT COUNTY
DATE: 08/10/2018
SCALE: 1" = 30'
TITLE:

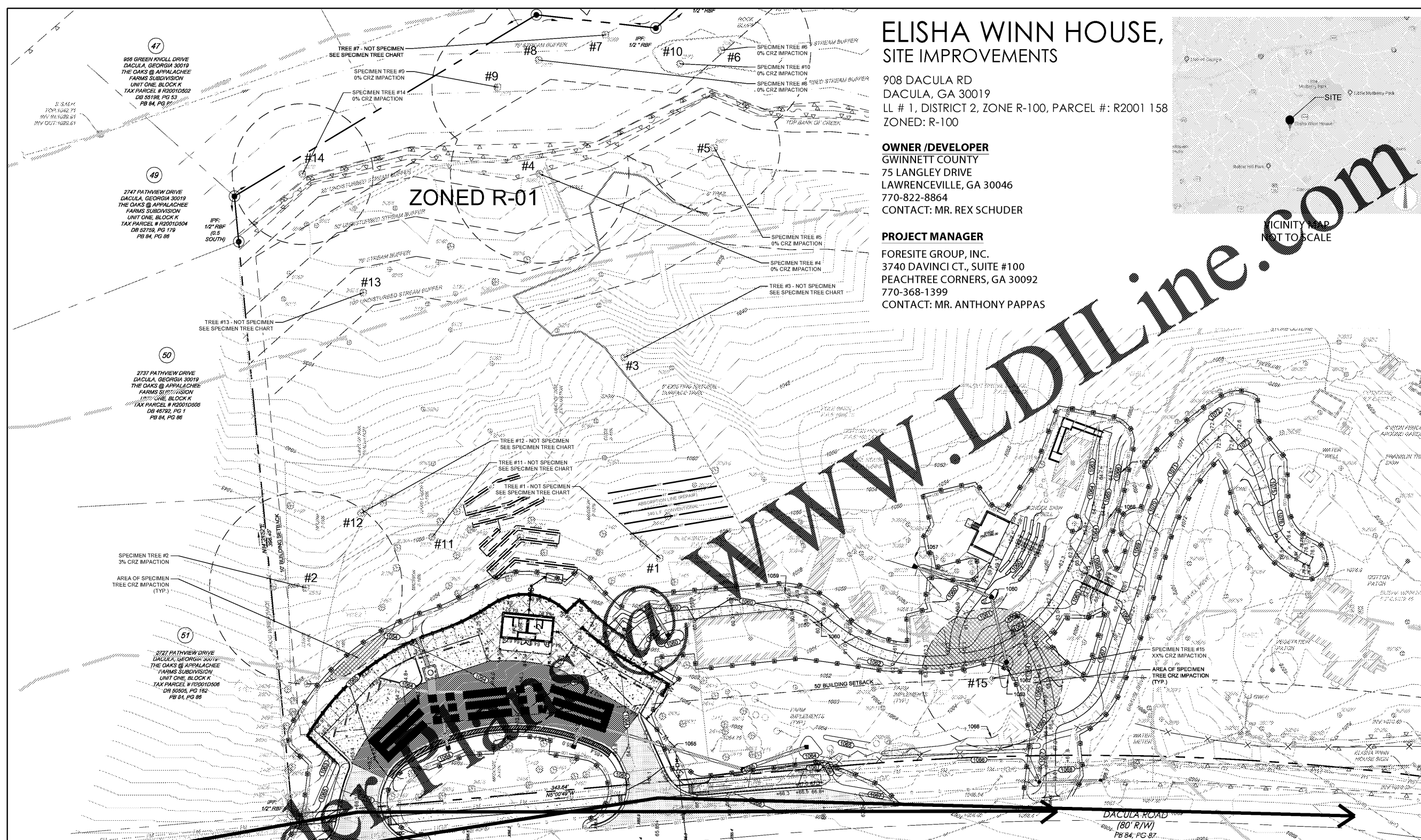
SPECIMEN TREE CONCEPT PLAN

SHEET NUMBER:

L-0.1

COMMENTS: RELEASED FOR CONSTRUCTION

JOB/FILE NUMBER: 223.082

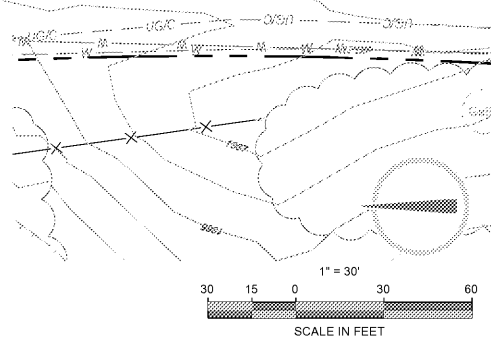


#	TRUNK DBH INCHES	SPECIES	CONDITION/ASSESSMENT	# IMPACTION	TREE TO BE
1	25	OAK	*NOT SPECIMEN: COVERED IN VINES, BROKEN BRANCHES, NUMEROUS CANKERS*	0.00%	PRESERVED
2	25	OAK	HEALTHY	0.00%	PRESERVED
3	25	OAK	*NOT SPECIMEN: MASSIVE SPLIT LEADER*	0.00%	PRESERVED
4	25	POPLAR	HEALTHY	0.00%	PRESERVED
5	25	OAK	HEALTHY	0.00%	PRESERVED
6	25	OAK	HEALTHY	0.00%	PRESERVED
7	25	OAK	*NOT SPECIMEN: SPLIT LEADERS, DISEASED*	0.00%	PRESERVED
8	25	POPLAR	HEALTHY	0.00%	PRESERVED
9	25	POPLAR	HEALTHY	0.00%	PRESERVED
10	25	OAK	HEALTHY	0.00%	PRESERVED
11	25	POPLAR	*NOT SPECIMEN: SPLIT LEADER,	0.00%	PRESERVED
12	25	OAK	*NOT SPECIMEN: NUMEROUS CAVITIES, DISEASED*	0.00%	PRESERVED
13	25	POPLAR	*NOT SPECIMEN: BROKEN LEADER ABOUT 40' OFF GROUND*	0.00%	PRESERVED
14	25	POPLAR	HEALTHY	0.00%	PRESERVED
15	30	PINE	HEALTHY	0.00%	PRESERVED

GENERAL NOTES:

- CRITICAL ROOT ZONES ARE SHOWN AT A RADIUS OF 1.5 TIMES THE DBH OF EACH SPECIMEN TREE.
- TREES DETERMINED NOT TO BE A SPECIMEN TREE PER THE GWINNETT COUNTY INSPECTOR'S REPORT DO NOT SHOW CRZs. (SEE REPORT)
- NO IMPACTION GREATER THAN 30% IS PROPOSED IN THE CRZ OF SPECIMEN TREES.
- THIS PLAN IS CONCEPTUAL IN NATURE AND DOES NOT CONSTITUTE APPROVAL FOR CONSTRUCTION OR DEVELOPMENT. ADDITIONAL REGULATIONS SHALL APPLY PRIOR TO PERMIT ISSUANCE.
- THINNING IS ALLOWED AND MAY INCLUDE MANUAL REMOVAL OF NON-SPECIMEN TREES WITHIN THE CRITICAL ROOT ZONE OR DRILL LINE OF THE SPECIMEN TREE IN THE LANDSCAPE INSTALLATION PHASE OF DEVELOPMENT ONLY. THINNING INCLUDES MANUAL REMOVAL (NO MOTORIZED/WHEELED OR TRACK VEHICLES ALLOWED WITHIN THE CRITICAL ROOT ZONE OF THE SPECIMEN TREE).
- A COMMERCIAL APPLICATOR LICENSE AND A PESTICIDE CONTRACTOR LICENSE ARE REQUIRED BY THE CONTRACTOR IF THE USE OF HERBICIDES ARE NECESSARY FOR NOXIOUS PLANT MATERIAL REMOVAL.

- NON-VEGETATIVE MATERIAL TO BE REMOVED MANUALLY.
- THINNING AND CLEARING OF ANY VEGETATIVE MATERIAL IN THE CRITICAL ROOT ZONE SHALL BE DONE IN THE LANDSCAPE INSTALLATION PHASE OF DEVELOPMENT.
- ALL BUFFERS AND TREE SAVE AREAS SHALL BE CLEARLY IDENTIFIED WITH TREE PROTECTION FENCING PRIOR TO COMMENCEMENT OF ANY LAND DISTURBANCE.
- TOPPING TREES IS NOT ALLOWED. TREES REMOVED OR HAVING THEIR TOPS CUT AFTER COMPLIANCE WITH THIS ORDINANCE SHALL BE REPLACED WITH THE EQUIVALENT INCHES OF REMOVED TREES.



GWINNETT COUNTY STAMP AREA (4" X 4")
PROJECT # CDP2019-00035



FORESITE GROUP, INC. 3740 DAVINCI CT., SUITE 100, PEACHTREE CORNERS, GA 30092
 GWINNETT COUNTY, GEORGIA
 770-368-1399 | www.fg-inc.net