

#	SURVEY #	COMMON NAME	SIZE IN INCHES	CONDITION/ASSESSMENT
1	2562	OAK	45	*NOT SPECIMEN: COVERED IN VINES, BROKEN BRANCHES, NUMEROUS CANKERS*
2	2563	OAK	41	HEALTHY
3	2564	OAK	44	*NOT SPECIMEN: MASSIVE SPLIT LEADER*
4	2566	POPLAR	38	HEALTHY
5	2567	POPLAR	28	HEALTHY
6	2568	OAK	38	HEALTHY
7	2569	OAK	43	*NOT SPECIMEN: SPLIT LEADERS, DISEASED*
8	2570	POPLAR	28	HEALTHY
9	2571	POPLAR	28	HEALTHY
10	2572	OAK	45	HEALTHY
11	2573	POPLAR	36	*NOT SPECIMEN: SPLIT LEADER, DISEASED*
12	2574	OAK	29	*NOT SPECIMEN: NUMEROUS CANKERS, DISEASED*
13	2575	POPLAR	28	*NOT SPECIMEN: BROKEN LEADER ABOUT 40' OFF GROUND*
14	2576	POPLAR	30	HEALTHY
15	30039	PINE	30	HEALTHY

GENERAL NOTES:

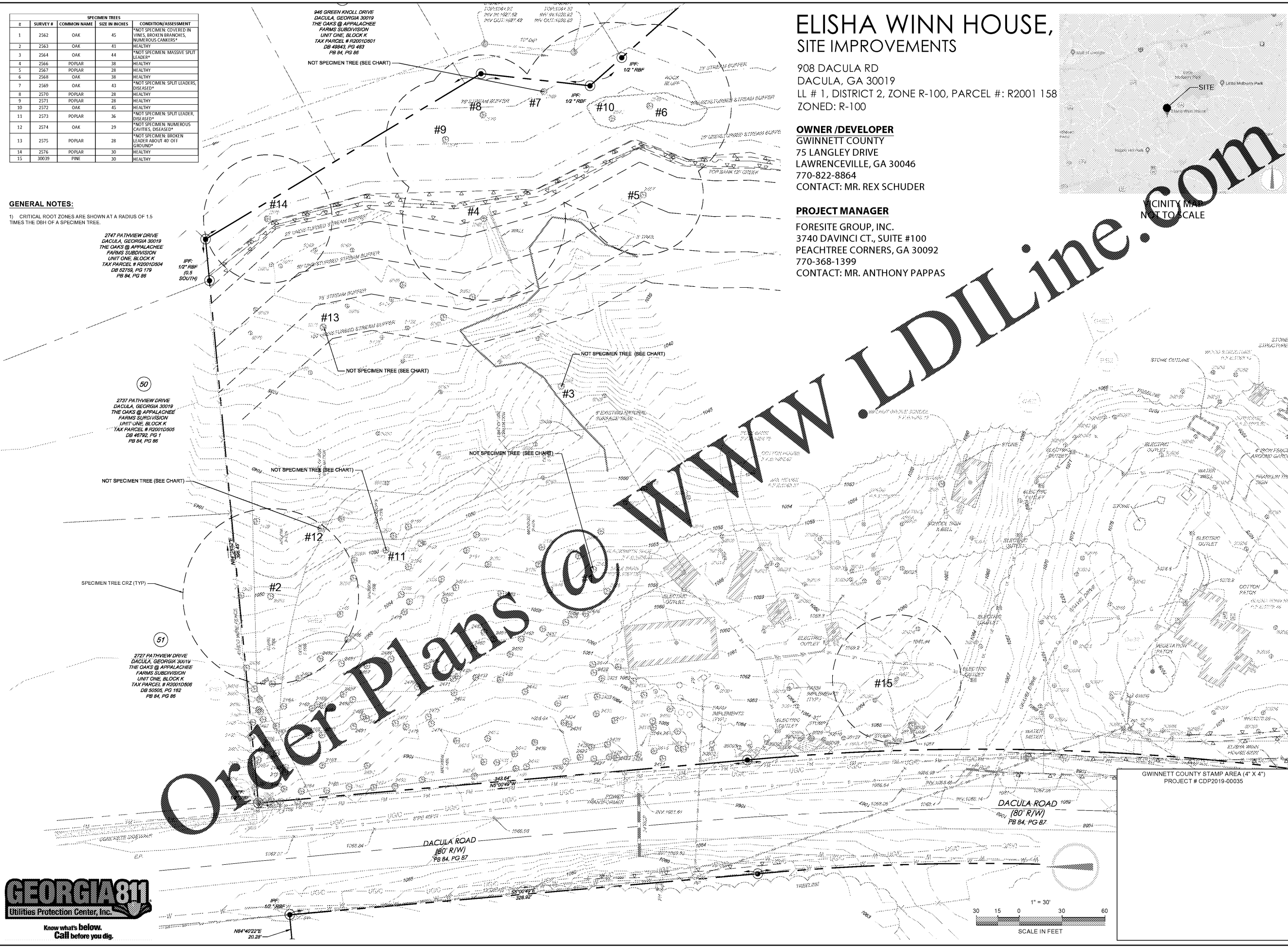
1) CRITICAL ROOT ZONES ARE SHOWN AT A RADIUS OF 1.5 TIMES THE DBH OF A SPECIMEN TREE.

2747 PATHVIEW DRIVE
DACULA, GEORGIA 30019
THE OAKS @ APPALACHEE
FARMS SUBDIVISION
UNIT ONE, BLOCK K
TAX PARCEL # R2001D204
DB 52159, PG 179
PB 84, PG 88

2737 PATHVIEW DRIVE
DACULA, GEORGIA 30019
THE OAKS @ APPALACHEE
FARMS SUBDIVISION
UNIT ONE, BLOCK K
TAX PARCEL # R2001D505
DB 48792, PG 1
PB 84, PG 86

2727 PATHVIEW DRIVE
DACULA, GEORGIA 30019
THE OAKS @ APPALACHEE
FARMS SUBDIVISION
UNIT ONE, BLOCK K
TAX PARCEL # R2001D506
DB 50505, PG 162
PB 84, PG 86

946 GREEN KNOLL DRIVE
DACULA, GEORGIA 30019
THE OAKS @ APPALACHEE
FARMS SUBDIVISION
UNIT ONE, BLOCK K
TAX PARCEL # R2001D501
DB 49843, PG 483
PB 84, PG 86

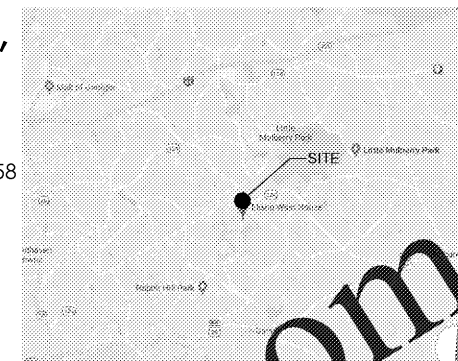


ELISHA WINN HOUSE, SITE IMPROVEMENTS

908 DACULA RD
DACULA, GA 30019
LL # 1, DISTRICT 2, ZONE R-100, PARCEL #: R2001 158
ZONED: R-100

OWNER /DEVELOPER
GWINNETT COUNTY
75 LANGLEY DRIVE
LAWRENCEVILLE, GA 30046
770-822-8864
CONTACT: MR. REX SCHUDER

PROJECT MANAGER
FORESITE GROUP, INC.
3740 DAVINCI CT., SUITE #100
PEACHTREE CORNERS, GA 30092
770-368-1399
CONTACT: MR. ANTHONY PAPPAS



VICINITY MAP
NOT TO SCALE

ENGINEER
FORESITE
group
Foresite Group, Inc. w | www.fg-inc.net
3740 Davinci Ct. o | 770.368.1399
Suite 100 f | 770.368.1944
Peachtree Corners, GA 30092

DEVELOPER

75 LANGLEY DR.
LAWRENCEVILLE, GEORGIA 30046
770-822-8864
CONTACT: MR. REX SCHUDER

ELISHA WINN HOUSE
SITE IMPROVEMENTS
908 DACULA RD
DACULA, GA 30019
LL # 1, DISTRICT 2, ZONE R-100

SEAL

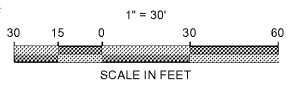
4/08/19

REVISIONS	DATE
GWINNETT CO. RESUBMITTAL	03/20/2019

PROJECT MANAGER:	AWP
DRAWING BY:	KCN
JURISDICTION:	GWINNETT COUNTY
DATE:	08/10/2018
SCALE:	1" = 30'
TITLE:	

SPECIMEN TREE SURVEY
SHEET NUMBER:
L-0.0
COMMENTS: RELEASED FOR CONSTRUCTION
JOB/FILE NUMBER: 223.082

GEORGIA811
Utilities Protection Center, Inc.
Know what's below.
Call before you dig.



GWINNETT COUNTY STAMP AREA (4" X 4")
PROJECT # CDP2019-00035
DACULA ROAD
(80' R/W)
PB 84, PG 87