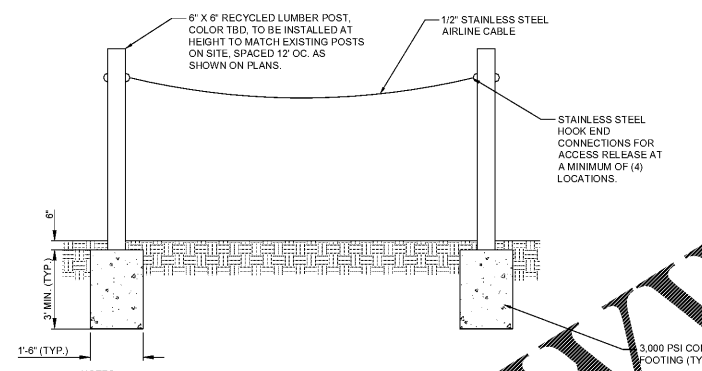
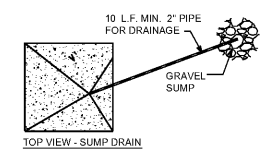
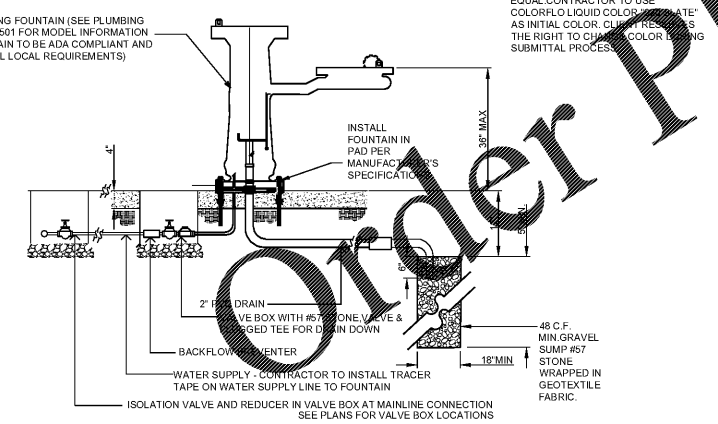
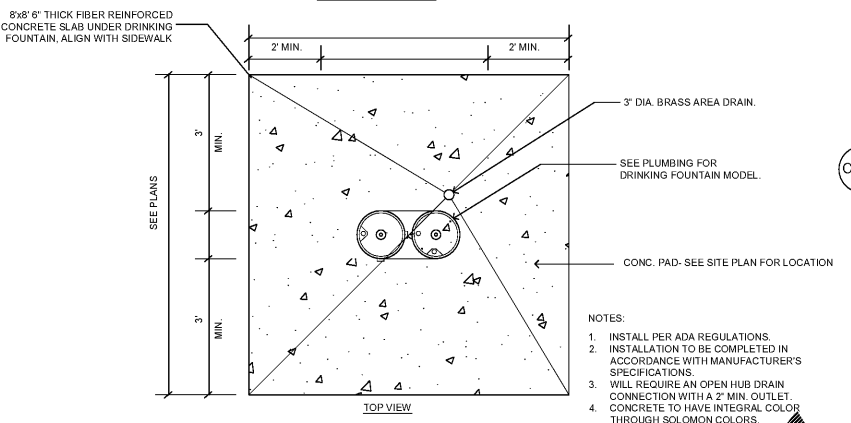


C-6.1 BRIDGED CONCRETE TRAIL OVER TREE ROOTS  
NOT TO SCALE

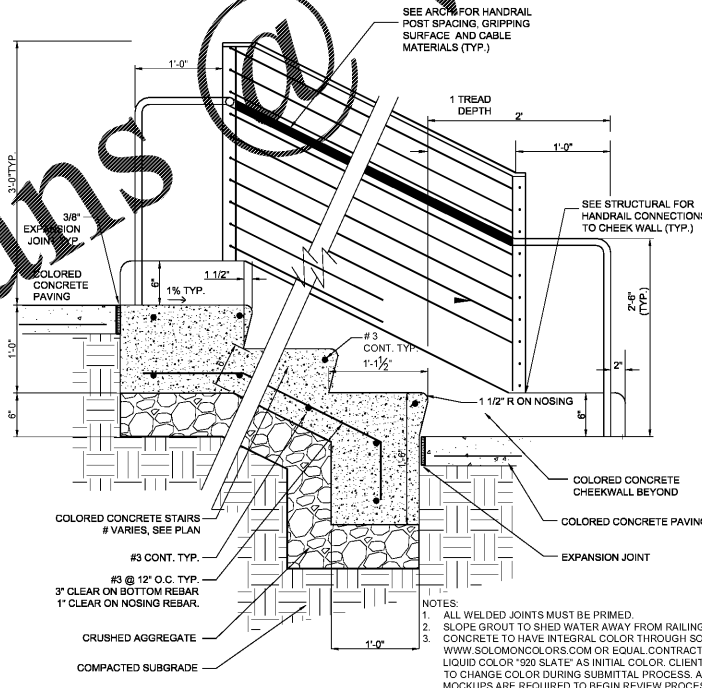
C-6.1 TRASH RECEPTACLE  
NOT TO SCALE



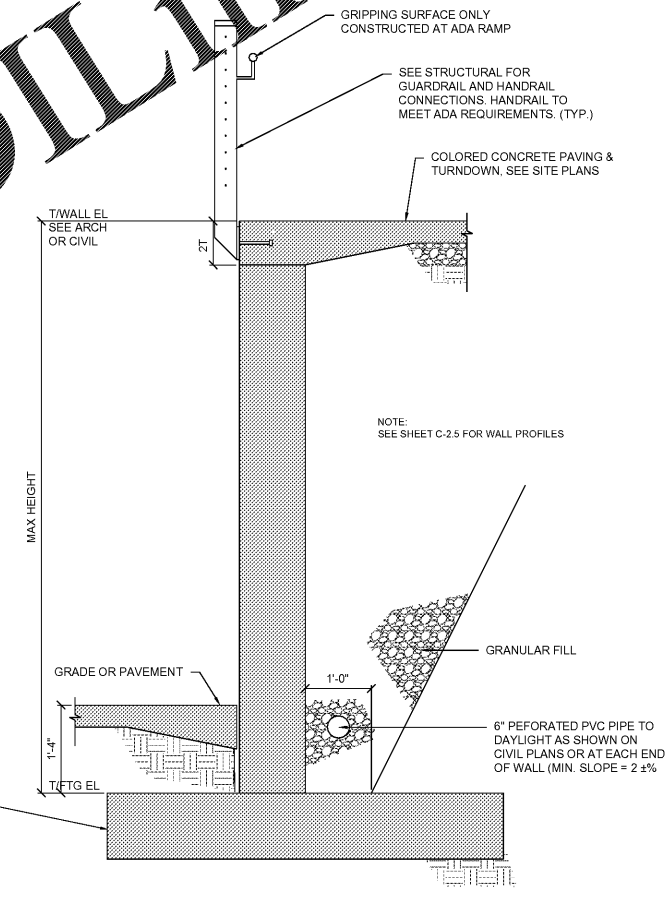
C-6.1 POST AND CABLE FENCE  
NOT TO SCALE



C-6.1 DRINKING FOUNTAIN UTILITY CONNECTIONS  
NOT TO SCALE



C-6.1 COLORED CONCRETE STAIRS W/ CHEEKWALL  
NOT TO SCALE



C-6.1 COLORED POURED IN PLACE RETAINING WALL  
NOT TO SCALE

GWINNETT COUNTY STAMP AREA (4" X 4")  
PROJECT # CDP2019-00035



ENGINEER  
**FORESITE** group  
Foresite Group, Inc. | www.fg-inc.net  
3740 Davinci Ct. | 770.368.1399  
Suite 100 | f | 770.368.1944  
Peachtree Corners, GA 30092

DEVELOPER  
**GWINNETT COUNTY - GEORGIA**  
ESTABLISHED 1858  
75 LANGLEY DR.  
LAWRENCEVILLE, GEORGIA 30046  
770-822-8864  
CONTACT: MR. REX SCHUDER

PROJECT:  
**ELISHA WINN HOUSE**  
SITE IMPROVEMENTS  
908 DACULA RD  
DACULA, GA 30019  
LL # 1, DISTRICT 2, ZONE R-100  
PARCEL #R2001 158

SEAL:  
**GEORGIA REGISTERED**  
No. 038646  
PROFESSIONAL  
ENGINEER  
LUIGA C. MAZZEI  
4/08/19  
GEORGIA LEVEL II CERTIFIED  
PROFESSIONAL # 0000058923  
EXPIRATION DATED: 08/21/2021

REVISIONS	DATE
GWINNETT CO. RESUBMITTAL	03/20/2019

PROJECT MANAGER: AWP  
DRAWING BY: SSH  
JURISDICTION: GWINNETT COUNTY  
DATE: 08/10/2018  
SCALE: AS SHOWN  
TITLE:

**CONSTRUCTION DETAILS**

SHEET NUMBER: **C-6.1**  
COMMENTS: RELEASED FOR CONSTRUCTION  
JOB/FILE NUMBER: 223.082