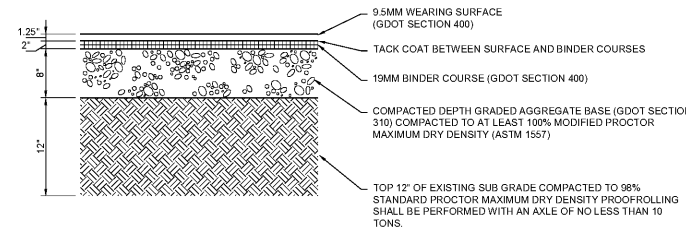
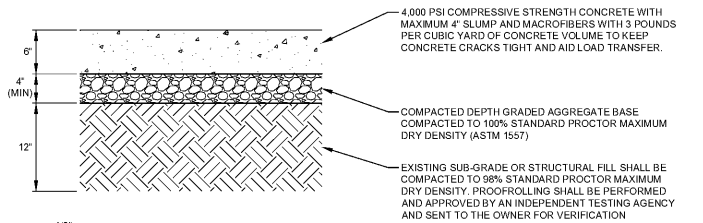


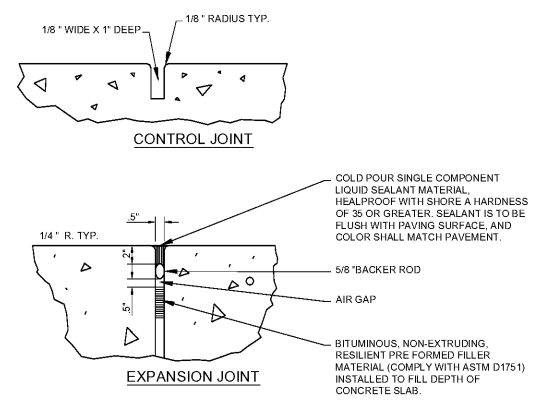
C-5 ROW CONCRETE SIDEWALK PAVING  
NOT TO SCALE



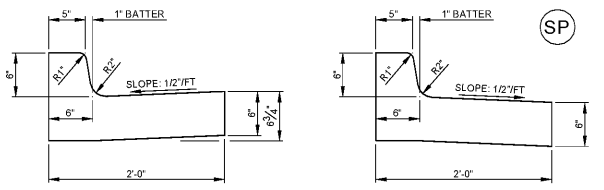
C-5 GWINNETT DOT ASPHALT PAVING  
NOT TO SCALE



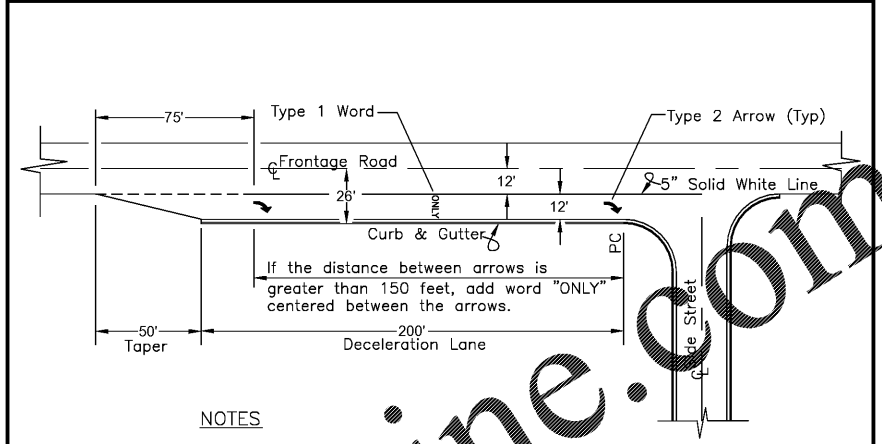
C-5 COLORED MEDIUM (STANDARD) DUTY CONCRETE PAVING  
NOT TO SCALE



C-5 CONTROL AND EXPANSION JOINTS FOR SIDEWALK  
NOT TO SCALE



C-5 24" CONCRETE CURB AND GUTTER  
NOT TO SCALE



NOTES

1. Deceleration lane shown for typical two lane rural road. A multi-lane road deceleration lane is similar.
2. Paint for pavement markings shall meet the requirements of Section 6.4 of the County Development Regulations.
3. Deceleration lanes less than 200 feet in length must be approved by the Gwinnett D.O.T and the Planning and Development Department.

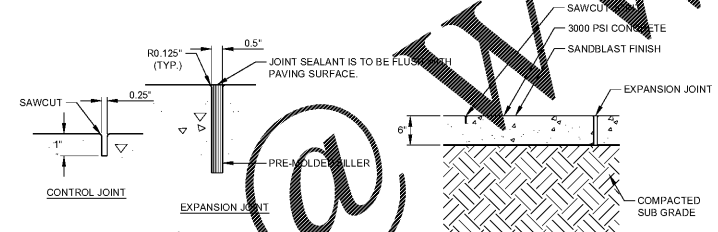
BY: \_\_\_\_\_

REVISION: \_\_\_\_\_

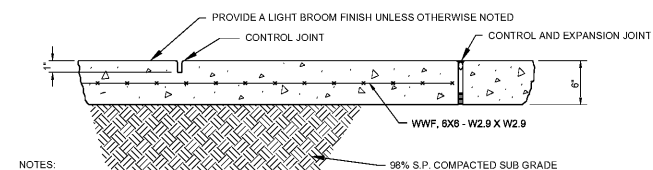
DATE: \_\_\_\_\_

GWINNETT COUNTY DEPARTMENT OF TRANSPORTATION STANDARD DECCELERATION LANE LAYOUT & PAVEMENT MARKINGS DATE: FEBRUARY, 2003 BY: EOP

C-5 DECEL LANE DETAIL  
NOT TO SCALE



C-5 COLORED EXPOSED AGGREGATE CONCRETE SIDEWALK PAVING  
NOT TO SCALE



C-5 COLORED REINFORCED CONCRETE SLAB  
NOT TO SCALE

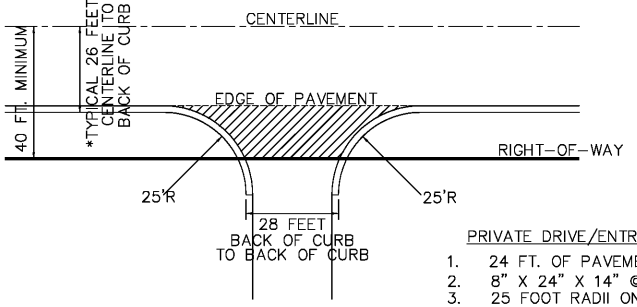
DRIVEWAY DETAIL 2 - 28 FT. WIDTH, 25 FT. RADIUS

COMMERCIAL SITES (80,000 SQ. FT. OR LESS)

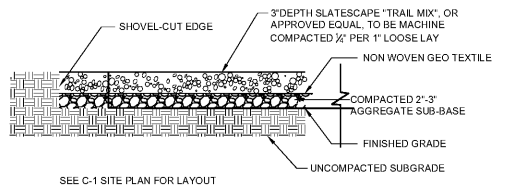
OFFICE/INSTITUTIONAL COMPLEXES (100,000 SQ. FT. OF LESS)

APARTMENT/CONDO COMPLEXES (200 UNITS OR LESS)

MOBILE HOME COMPLEXES (200 LOTS OR LESS)



C-5 FULL ACCESS DRIVE DETAIL  
NOT TO SCALE



C-5 SLATESCAPE  
NOT TO SCALE

ENGINEER

**FORESITE** group

Foresite Group, Inc. | www.fg-inc.net  
3740 Davinci Ct. | 770.368.1399  
Suite 100 | 770.368.1944  
Peachtree Corners, GA 30092

DEVELOPER

GWINNETT COUNTY - GEORGIA  
ESTABLISHED 1958

75 LANGLEY DR.  
LAWRENCEVILLE, GEORGIA 30046  
770-822-8864

CONTACT: MR. REX SCHUDER

PROJECT:

**ELISHA WINN HOUSE**  
SITE IMPROVEMENTS

908 DACULA RD  
DACULA, GA 30019  
LL # 1, DISTRICT 2, ZONE R-100  
PARCEL #R2001 158

SEAL:

GEORGIA REGISTERED PROFESSIONAL ENGINEER  
No. 038646  
LUISA C. MAZZISI  
4/08/19

GEORGIA LEVEL II CERTIFIED PROFESSIONAL # 0000058923  
EXPIRATION DATED: 08/21/2021

REVISIONS	DATE
GWINNETT CO. RESUBMITTAL	03/20/2019

PROJECT MANAGER: AWP

DRAWING BY: SSH

JURISDICTION: GWINNETT COUNTY

DATE: 08/10/2018

SCALE: AS SHOWN

TITLE:

PAVING DETAILS

SHEET NUMBER: C-5

COMMENTS: RELEASED FOR CONSTRUCTION

JOB/FILE NUMBER: 223.082

