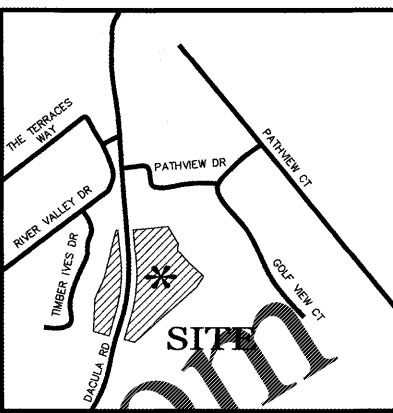


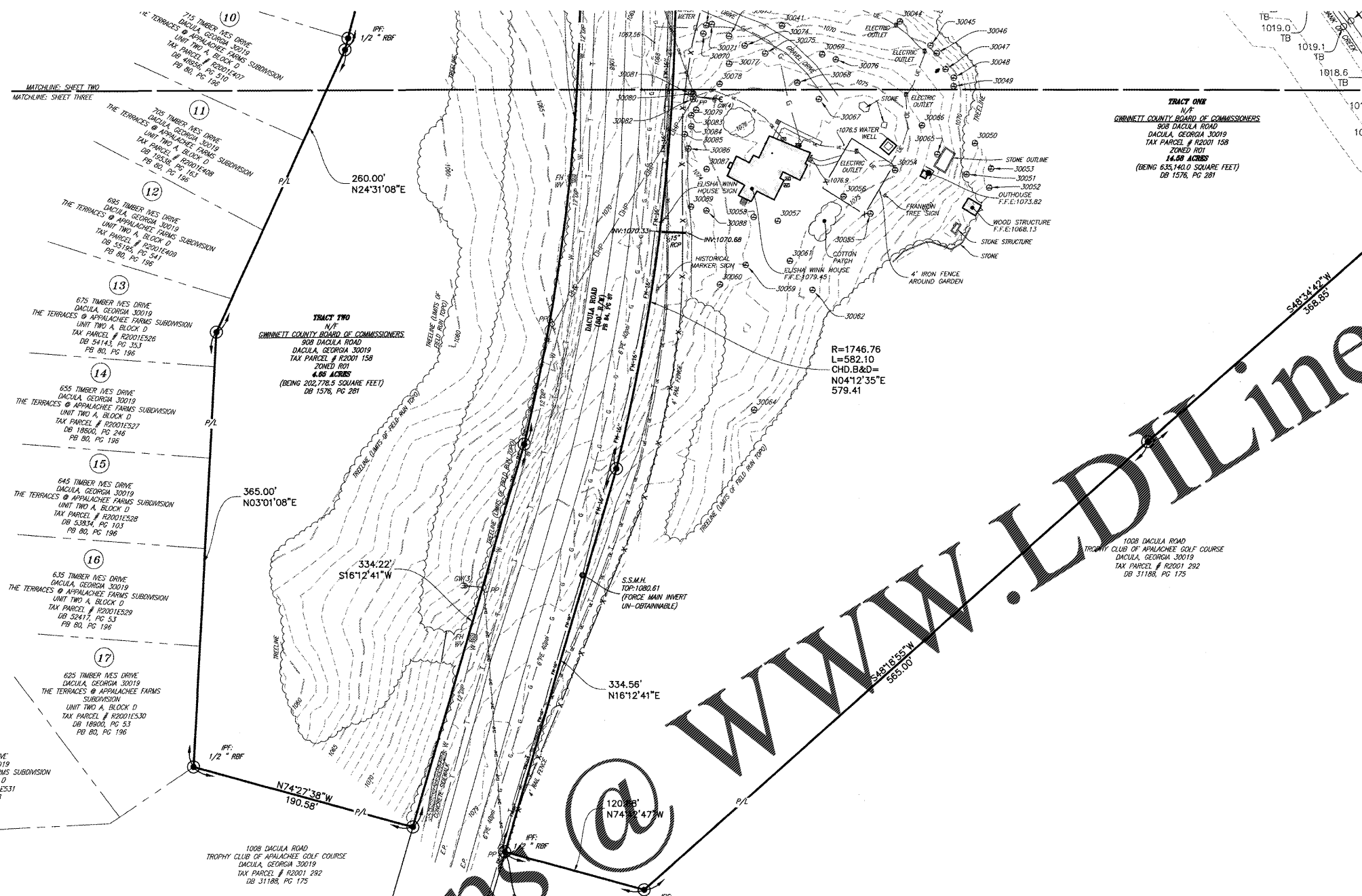


Hayes James

ENGINEERS, PLANNERS & SURVEYORS
4145 SHACKLEFORD ROAD
SUITE 300
NORCROSS, GEORGIA 30093
TEL: (770) 923-1600
FAX: (770) 923-4202
CERTIFICATE OF AUTHORIZATION:
NO. LSF000255



LOCATION MAP
(NOT TO SCALE)



LEGEND

- IPF = IRON PIN FOUND
- IPS = IRON PIN SET
- CMF = CONCRETE MONUMENT FOUND
- R/W = RIGHT OF WAY
- LL = LAND LOT LINE
- CL = CENTERLINE
- P = PROPERTY LINE
- PC = PROPERTY CORNER
- B/L = BUILDING LINE
- R = RADIUS
- P = POLE
- G = GAS LINE
- W = WATER LINE
- T = TELEPHONE LINE
- P = POWER LINE
- S = SANITARY SEWER LINE
- ST = STORM SEWER LINE
- X = FENCE
- SSE = SANITARY SEWER EASEMENT
- MH = MANHOLE
- WV = WATER VALVE
- F.H. = FIRE HYDRANT
- GM = GAS METER
- WM = WATER METER
- GI = GRATE INLET
- DI = DROP INLET
- CB = CATCH BASIN
- HW = HEADWALL
- OS = OUTLET STRUCTURE
- JB = JUNCTION BOX
- D.E. = DRAINAGE EASEMENT
- S.S.E. = SANITARY SEWER EASEMENT
- CO = CLEAN OUT
- OMP = CORRUGATED METAL PIPE
- ROP = REINFORCED CONCRETE PIPE
- DIP = DUCTILE IRON PIPE
- PVC = POLYVINYL CHLORIDE PIPE
- F.I.R.M. = FEDERAL INSURANCE RATE MAP
- P.O.B. = POINT OF BEGINNING
- P.O.C. = POINT OF COMMENCEMENT
- FC = FDC (FIRE DEPT. CONNECTION)
- L.P. = LIGHT POLE
- ESMT. = EASEMENT
- P.B. = PLAT BOOK
- D.B. = DEED BOOK
- PG. = PAGE
- B & D = BEARING & DISTANCE
- ETB = ELECTRIC TRANSFORMER BOX
- N/F = NOW OR FORMERLY

BOUNDARY & TOPOGRAPHIC SURVEY FOR:

ELISHA WINN HOUSE PROPERTY
GWINNETT HISTORICAL SOCIETY, INC.
GWINNETT COUNTY PARKS AND RECREATION

PROJECT LOCATION

LAND LOT(S): 1
DISTRICT: 2ND
SECTION: N/A
COUNTY: GWINNETT
STATE: GEORGIA

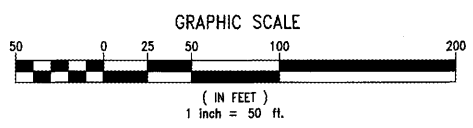


PROJECT NO: 17-0725
DRAWN BY: CFJ
CHECKED BY: DAH
SCALE: 1" = 50'
DATE: OCTOBER 25, 2017

NO.	REVISIONS	DATE	BY	APPR.



Know what's below.
Call before you dig.
Dial 811 or Call 1-800-282-7411



Order Plans @

WWW.LDILine.com

