



Hayes James

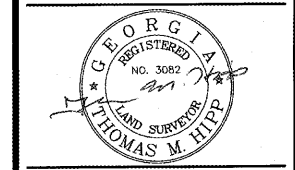
ENGINEERS, PLANNERS & SURVEYORS

4145 SHACKLEFORD ROAD
SUITE 300
NORCROSS, GEORGIA 30093
TEL: (770) 923-1600
FAX: (770) 923-4202

CERTIFICATE OF AUTHORIZATION:
NO. LSF000255

BOUNDARY & TOPOGRAPHIC SURVEY FOR:
ELISHA WINN HOUSE PROPERTY
GWINNETT HISTORICAL SOCIETY, INC.
GWINNETT COUNTY PARKS AND RECREATION

PROJECT LOCATION
LAND LOT(S): 1
DISTRICT: 2ND
SECTION: N/A
COUNTY: GWINNETT
STATE: GEORGIA



PROJECT NO: 17-072S
DRAWN BY: CFJ
CHECKED BY: DAH
SCALE: 1" = 50'
DATE: OCTOBER 25, 2017

Table with columns: NO., REVISIONS, DESCRIPTION, DATE, BY, APPR. (17-072S-1R)

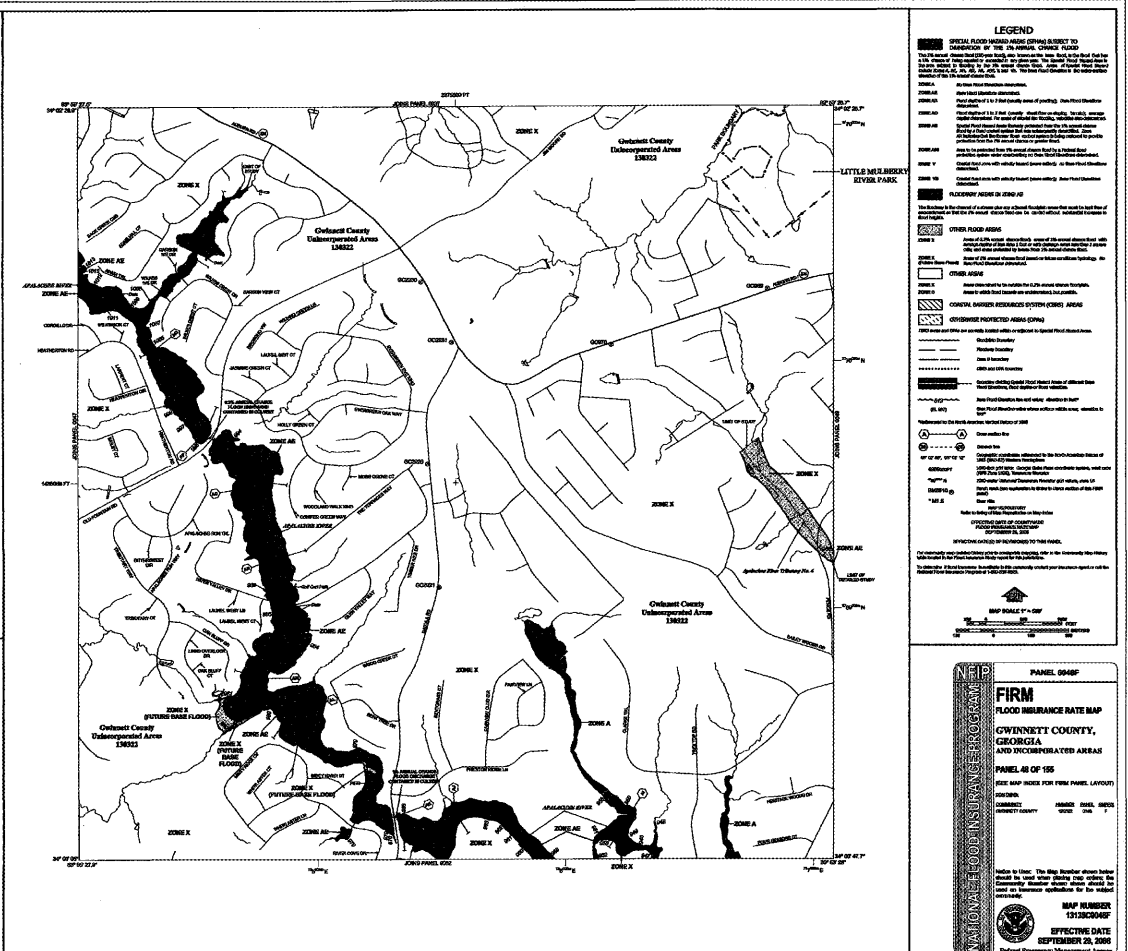
© Copyright 2017 HAYES, JAMES & ASSOCIATES, INC.
This drawing and its reproductions are the property of the engineer and may not be reproduced, published, or used in whole or in part without the written permission of the engineer.

GENERAL NOTES:

- 1. REFERENCE FOR THIS SURVEY SHOULD BE MADE TO THE LIMITED WARRANTY DEED FROM BAPTIST FOUNDATION OF TEXAS AND OLYN S. SIMS, SR. TO GWINNETT HISTORICAL SOCIETY, INC., DATED SEPTEMBER 14, 1987, RECORDED IN DEED BOOK 1576, PAGE 281, BEING ON FILE WITH THE CLERK OF SUPERIOR COURT, GWINNETT COUNTY, GEORGIA.
- 2. THE BEARING STRUCTURE FOR THIS SURVEY IS BASED UPON MONUMENTATION FOUND IN THE FIELD AND REFERENCED TO THE SURVEY IN GENERAL NOTE NO. 1 ABOVE.
- 3. NO PORTION OF THE PROPERTY LIES WITHIN A DESIGNATED FLOOD HAZARD AREA AS PER FIRM COMMUNITY PANEL NO. 1312100048F GWINNETT COUNTY, GEORGIA; EFFECTIVE DATE SEPTEMBER 9, 2006.
- 4. THE FIRM OF HAYES, JAMES AND ASSOCIATES, INC. DOES NOT CERTIFY TO THE ACCURACY OR THE LOCATION OF ANY UNDERGROUND UTILITIES EITHER SHOWN OR NOT SHOWN HEREON. CONTACT THE UTILITIES PROTECTION CENTER AT 1-800-282-7411 PRIOR TO ANY CONSTRUCTION.
- 5. NO ATTEMPT WAS MADE TO SHOW ALL OF THE INTERIOR IMPROVEMENTS.
- 6. NO ATTEMPT WAS MADE TO IDENTIFY/SHOW WETLANDS AND/OR STREAM BUFFER DELINEATIONS.
- 7. PURSUANT TO RULE 180-6.09 OF THE GEORGIA STATE BOARD OF REGISTRATION FOR PROFESSIONAL ENGINEERS AND LAND SURVEYORS, THE TERM "CERTIFY" OR "CERTIFICATION" RELATING TO LAND SURVEYING SERVICES SHALL MEAN A SIGNED STATEMENT BASED UPON FACTS AND KNOWLEDGE KNOWN TO THE REGISTRANT AND IS NOT A GUARANTEE OR WARRANTY, EITHER EXPRESSED OR IMPLIED.
- 8. THE PUBLIC RECORDS SHOWN HEREON REFLECTS THOSE RECORDS NECESSARY TO ESTABLISH THE BOUNDARIES SHOWN HEREON AND REFERENCE TO THE SAME DOES NOT AND IS NOT INTENDED TO CONSTITUTE A TITLE SEARCH OR TITLE OPINION. THIS SURVEY REFLECTS ONLY THOSE MATTERS OF TITLE OF RECORD FURNISHED TO THE SURVEYOR AT THIS TIME.
- 9. USERS OF A CADD FILE ARE CAUTIONED THAT CRITICAL DIMENSIONS OBTAINED BY ELECTRONIC INQUIRY CAN NOT BE RELIED UPON WITHOUT VERIFICATION. HAYES, JAMES & ASSOCIATES, INC. SHOULD BE CONSULTED PRIOR TO ISSUANCE OF CONSTRUCTION DRAWINGS FOR INPUT AND VERIFICATION.
- 10. I.P.S. INDICATES THAT A ONE-HALF INCH REBAR TYPE PIN WAS SET.
- 11. THE FIELD WORK FOR THIS SURVEY WAS CONDUCTED IN SEPTEMBER OF 2017.
- 12. IT IS UNDETERMINED IF THERE ARE SPECIAL ZONING CONDITIONS ASSOCIATED WITH THIS PROPERTY.
- 13. THIS PLAT WAS PREPARED AND CERTIFIED FOR THE INDIVIDUAL, INDIVIDUALS OR GROUP LISTED ON THIS DOCUMENT. THE CERTIFICATION DOES NOT EXTEND TO OTHER INDIVIDUALS OR GROUPS WITHOUT RE-CERTIFICATION BY THE SURVEYOR OF RECORD LISTING NEW OR ADDITIONAL INDIVIDUALS OR GROUPS.
- (ii) THIS PLAT IS A RE-TRACEMENT OF AN EXISTING PARCEL OF LAND AND DOES NOT SUBDIVIDE OR CREATE A NEW PARCEL OR MAKE ANY CHANGES TO ANY REAL PROPERTY BOUNDARIES. THE RECORDING INFORMATION IN THE DOCUMENTS, MAPS, PLATS, OR OTHER INSTRUMENTS WHICH CREATED THE PARCELS OR PARCELS ARE STATED HEREON. RECOMMENDATIONS OF THIS PLAT DOES NOT REQUIRE APPROVAL OF ANY LOCAL JURISDICTION, AVAILABILITY OF PERMITS, COMPLIANCE WITH LOCAL REGULATIONS OR REQUIREMENTS, OR LIABILITY FOR ANY USE OR PURPOSE OF THE LAND. FURTHERMORE, HAYES, JAMES & ASSOCIATES, INC. CERTIFIES THAT THIS PLAT COMPLIES WITH THE MINIMUM TECHNICAL STANDARDS FOR PROPERTY SURVEYS IN GEORGIA AS SET FORTH IN THE RULES AND REGULATIONS OF THE STATE OF GEORGIA BOARD OF REGISTRATION FOR PROFESSIONAL ENGINEERS AND LAND SURVEYORS AS SET FORTH IN O.C.G.A. SECTION 47-2-67.

Thomas M. Hipp, Georgia Registered Land Surveyor No. 3082
of State of Georgia, December 3, 2018.

NOTES TO USERS
This map is to be used in conjunction with the Survey Plat...
The map is to be used in conjunction with the Survey Plat...
The map is to be used in conjunction with the Survey Plat...



ELISHA WINN HOUSE - TREE INVENTORY

ID #	SPECIES	CALIPER	NOTES
30001	TULIP POPLAR	24"	
30002	PINE	25"	
30003	PINE	27"	
30004	PINE	25"	
30005	PINE	15"	
30006	PINE	29"	
30007	DOGWOOD	6"	
30008	PINE	17"	
30009	PINE	21"	
30010	CHERRY	11"	
30011	PINE	19"	
30012	PINE	24"	
30013	CRAPE MYRTLE	3", 3", 3", 3", 2"	MULTI-TRUNK
30014	PINE	17"	
30015	SWEETGUM	15"	
30016	TULIP POPLAR	17"	
30017	SWEETGUM	16"	
30018	CHERRY	8"	
30019	PECAN	14"	
30020	TULIP POPLAR	21"	
30021	PAPER MULBERRY	6"	
30022	PAPER MULBERRY	6", 7"	MULTI-TRUNK
30023	PINE	28"	
30024	PINE	27"	
30025	SWEETGUM	18"	
30026	PINE	26"	
30027	PERSIMMON	7"	
30028	PINE	26"	
30029	PINE	25"	
30030	PECAN	11"	
30031	PECAN	11"	

ELISHA WINN HOUSE - TREE INVENTORY

NOTES ID #	SPECIES	CALIPER	NOTES
30032	PECAN	14"	
30033	WALNUT	13"	
30034	WALNUT	17"	
30035	WALNUT	17"	
30036	WALNUT	22"	
30037	PECAN	14"	
30038	PECAN	24"	
30039	PINE	30"	
30040	PECAN	19"	
30041	PECAN	18"	
30042	PECAN	12"	
30043	WALNUT	10"	
30044	WALNUT	10"	
30045	UNKNOWN	10"	
30046	WALNUT	6"	
30047	SUGARBERRY	22"	
30048	WALNUT	16"	
30049	SUGARBERRY	5", 4", 2"	MULTI-TRUNK
30050	HONEY LOCUST	8"	
30051	CHINABERRY	6", 11", 8"	MULTI-TRUNK
30052	WALNUT	15"	
30053	WALNUT	9"	MULTI-TRUNK
30054	WALNUT	21"	
30055	BRADFORD PEAR	23"	
30056	UNKNOWN	5", 5"	MULTI-TRUNK
30057	BLACKGUM	8"	
30058	CRAPE MYRTLE	AVERAGE 4" (30 TRUNKS)	MULTI-TRUNK
30059	WALNUT	11", 12"	MULTI-TRUNK
30060	CRAPE MYRTLE	AVERAGE 4" (42 TRUNKS)	MULTI-TRUNK
30061	CRAPE MYRTLE	12", 12", 6"	MULTI-TRUNK
30062	OAK	17"	

ELISHA WINN HOUSE - TREE INVENTORY

NOTES ID #	SPECIES	CALIPER	NOTES
30063	SUGARBERRY	6", 5", 4"	MULTI-TRUNK
30064	OAK	9", 7"	MULTI-TRUNK
30065	UNKNOWN	17", 11", 11"	MULTI-TRUNK
30066	MAPLE	2"	
30067	DOGWOOD	7", 5", 5", 9", 5", 7"	MULTI-TRUNK
30068	MAGNOLIA	17"	
30069	PECAN	23"	
30070	PECAN	12"	
30071	HYDRANGEA	2"	TREE FORM
30072	HYDRANGEA	AVE 2" (6 TRUNKS)	TREE FORM (MULTI TRUNKS)
30073	PECAN	16"	
30074	PINE	25"	
30075	PECAN	11"	
30076	PERSIMMON	13"	
30077	PECAN	13"	
30078	PECAN	15"	
30079	PECAN	12"	
30080	CRAPE MYRTLE	2"	
30081	CRAPE MYRTLE	2", 2", 2"	MULTI-TRUNK
30082	CRAPE MYRTLE	AVE 2" (10 TRUNKS)	MULTI-TRUNK
30083	CRAPE MYRTLE	AVE 3.5" (10 TRUNKS)	MULTI-TRUNK
30084	CRAPE MYRTLE	4" (3 TRUNKS) 2" (1 TRUNK)	MULTI-TRUNK
30085	CRAPE MYRTLE	3" (4 TRUNKS) 2" (3 TRUNK)	MULTI-TRUNK
30086	PECAN	14"	
30087	PERSIMMON	12"	
30088	PECAN	13"	
30089	BLACKGUM	24"	
30090	PINE	28"	

ID #	SPECIES	CALIPER IN	ID #	SPECIES	CALIPER IN
2156	SWEETGUM	15	2452	PINE	10
2157	SWEETGUM	8	2453	POPLAR	10
2158	SWEETGUM	8	2454	SWEETGUM	16
2159	PINE	18	2455	PINE	16
2160	PINE	14	2456	PINE	10
2161	PINE	11	2457	OAK	18
2162	PINE	14	2458	SWEETGUM	17
2163	PINE	9	2459	MAPLE	14 & 12
2164	PINE	13	2460	POPLAR	14
			2461	POPLAR	18
2168	PINE	11	2462	POPLAR	14
2169	PINE	11	2463	PINE	11
			2464	PINE	11
			2465	OAK	11
2181	PINE	16	2466	PEECH	8
2182	PINE	19	2467	OAK	10
2183	PINE	16	2468	OAK	10
2184	SWEETGUM	10	2469	PINE	20
2185	PINE	13	2470	OAK	14 & 10
2186	PINE	29	2471	MAPLE	17
2187	PINE	11	2472	POPLAR	18
2188	PINE	21	2473	PINE	11
2189	POPLAR	11	2474	PINE	24
			2475	PINE	27
2191	PINE	24	2476	PINE	16
2192	OAK	16	2477	POPLAR	16
2193	OAK	14	2478	PINE	9
			2479	PINE	17
2196	PINE	12	2480	OAK	12
2197	PINE	17	2481	PINE	16
2198	BEECH	12	2482	PINE	16
2199	PINE	11	2483	PINE	15
2200	OAK	13	2484	PINE	12
2201	PINE	15	2485	PINE	17
2202	PINE	9	2486	OAK	15
2203	OAK	22	2487	OAK	8
			2488	PINE	14
2285	SWEETGUM	10	2489	PINE	10
2286	PINE	24	2490	PINE	14
2287	PINE	11	2491	PINE	14
			2492	PINE	16
			2493	PINE	22
2391	PINE	8	2494	PINE	20
2396	PINE	16	2495	PINE	12
2398	PINE	16	2496	PINE	18
2400	PINE	8	2497	OAK	8
2402	POPLAR	10	2498	PINE	8
2404	PINE	17	2499	PINE	9
2406	PINE	11	2500	PINE	11
2408	PINE	14	2501	PINE	14
2409	POPLAR	11			
2410	ELM	9			
2411	PINE	10	2562	OAK	45
2412	PINE	19	2563	OAK	41
2413	PINE	13			
2414	SWEETGUM	10	2566	POPLAR	38
2415	SWEETGUM	13	2564	OAK	44
2416	PINE	13	2565	PINE	28
2417	PINE	9	2567	POPLAR	28
2418	POPLAR	13	2568	OAK	38
2419	POPLAR	11	2569	OAK	43
2420	POPLAR	13	2570	POPLAR	28
2421	SWEETGUM	10	2571	POPLAR	28
2422	SWEETGUM	10	2572	OAK	45
2423	SWEETGUM	17	2573	POPLAR	36
2424	PINE	25	2574	OAK	29
2425	SWEETGUM	11	2575	POPLAR	28
2426	SWEETGUM	10	2576	POPLAR	30
2427	SWEETGUM	14			
2428	POPLAR	8	5045	POPLAR	18
2429	SWEETGUM	8	5046	POPLAR	22
2430	PINE	22	5059	OAK	21
2431	SWEETGUM	11	5060	OAK	21
2432	PINE	18	5061	OAK	18
2433	PINE	20	5062	OAK	16&19
2434	POPLAR	9	5063	POPLAR	22
2435	POPLAR	10	5065	PINE	21
2436	PINE	12	5075	POPLAR	19
2437	PINE	16	5080	OAK	18
2438	POPLAR	12	5081	PINE	21
2439	PINE	14	5082	PINE	22
2440	PINE	15	5083	OAK	18
2441	POPLAR	9	5084	OAK	18
2442	PINE	17	5085	POPLAR	20
2443	PINE	12	5086	POPLAR	24
2444	POPLAR	14	5087	POPLAR	21
2445	SWEETGUM	11	5088	PINE	18
2446	OAK	17	5089	POPLAR	18
2447	SWEETGUM	8	5121	PINE	19
2448	SWEETGUM	11	5122	PINE	20
2449	PINE	25	5123	POPLAR	19
2450	PINE	12	5124	POPLAR	19
2451	SWEETGUM	14	5125	POPLAR	18