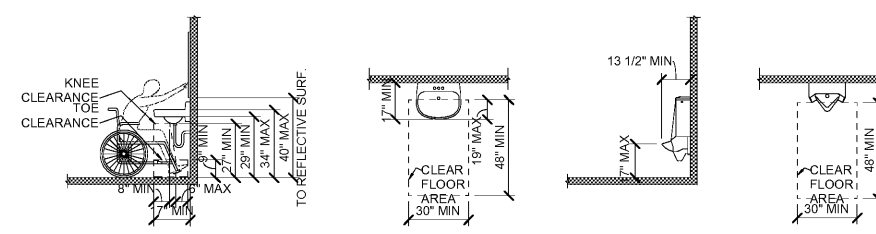
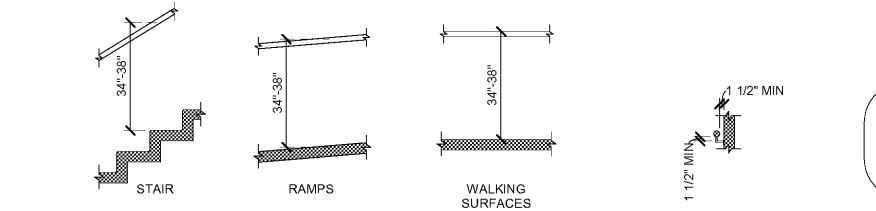


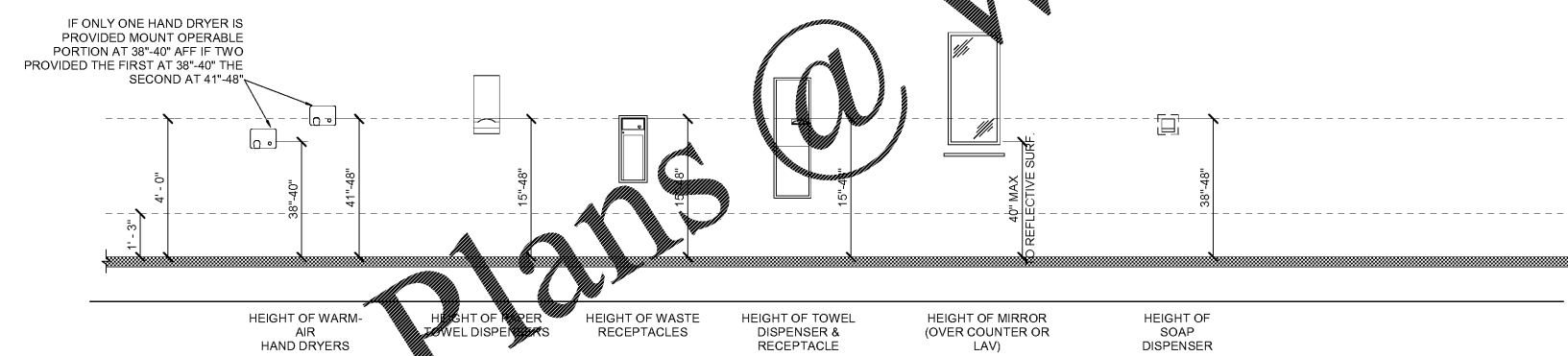
DRINKING FOUNTAIN CLEARANCES  
 WHEELCHAIR ACCESSIBLE WATER CLOSET CLEARANCES (ELEVATIONS)  
 WHEELCHAIR ACCESSIBLE TOILET COMPARTMENT (WALL HUNG)



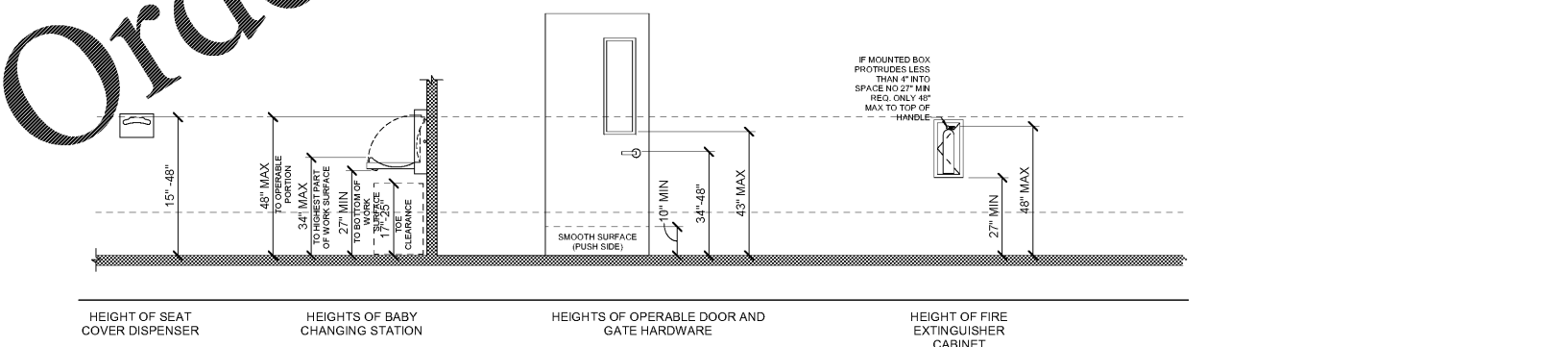
WHEELCHAIR ACCESSIBLE SINK CLEARANCES (ELEVATION)  
 WHEELCHAIR ACCESSIBLE SINK CLEARANCES (PLAN)  
 WHEELCHAIR ACCESSIBLE URINAL (ELEVATION)  
 WHEELCHAIR ACCESSIBLE URINAL (PLAN)



HANDRAIL HEIGHT  
 HANDRAIL CLEARANCE & PROJECTIONS  
 HANDRAIL NON-CIRCULAR CROSS SECTIONS  
 HANDRAIL CIRCULAR CROSS SECTION  
 HANDRAIL EXTENSIONS AT RAMP  
 HANDRAIL EXTENSIONS AT STAIRS



HEIGHT OF WARM-AIR HAND DRYERS  
 HEIGHT OF PAPER TOWEL DISPENSERS  
 HEIGHT OF WASTE RECEPTACLES  
 HEIGHT OF TOWEL DISPENSER & RECEPTACLE  
 HEIGHT OF MIRROR (OVER COUNTER OR LAV)  
 HEIGHT OF SOAP DISPENSER



HEIGHT OF SEAT COVER DISPENSER  
 HEIGHTS OF BABY CHANGING STATION  
 HEIGHTS OF OPERABLE DOOR AND GATE HARDWARE  
 HEIGHT OF FIRE EXTINGUISHER CABINET

MATERIAL KEYNOTES

GENERAL NOTES

SHEET SPECIFIC NOTES

GWINNETT CO. STAMP CDP2019-00035 KEY PLAN SEAL PROJECT NORTH

STATE OF GEORGIA  
 JACK H. PYBURN  
 REGISTERED ARCHITECT

JOB NAME: GWINNETT COUNTY ELISHA WINN HOUSE SITE IMPROVEMENTS  
 LOCATION: DACULA, GEORGIA 30019  
 SHEET TITLE: 2010 ADA STANDARD DETAILS AND MOUNTING HEIGHTS  
 SCALE: (N.O.)

ISSUE DATE: 02/12/2019  
 JOB NO.: 10958-00  
 DWG. NO.: G011

**LORD AECK SARGENT**  
 © 2018 Lord Aeck Sargent  
 LordAeckSargent.com  
 Unless otherwise agreed in writing this document is the sole property of Lord Aeck Sargent and is to be returned upon demand. The information herein is confidential and may not be used or divulged without the written permission of Lord Aeck Sargent.

REVISION:

SHEET TITLE: 2010 ADA STANDARD DETAILS AND MOUNTING HEIGHTS  
 SCALE: (N.O.)

FOR CONSTRUCTION