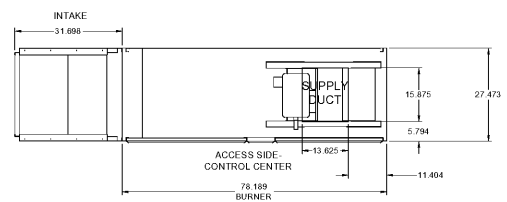
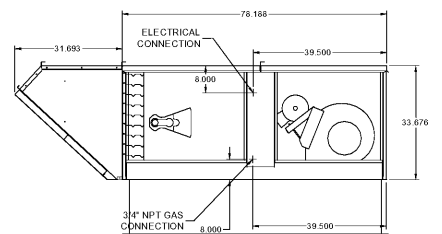


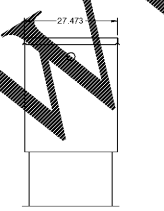
EQUIPMENT SCHEDULE										OPTIONS AND ACCESSORIES
Tempered Make-Up Air Unit										Air Flow Arrangement: Outdoor Air Only Weatherhood: Aluminum Mesh, 24x25x2 (-1), 16x25x2 (-1) Damper: Inlet Outdoor Air Intake Position: End Discharge Position: Bottom Coating: Galvanized Insulation: Duct Liner - Heat Source On Access Side: Right-Hand Control Center: Heat Inlet Air Sensor Unit Controls: Terminal Strip Temperature Control: Discharge Direct Gas Options/Accessories: Approvals: ETL and IRI Flame Spacing: Flame Rod Ignition Control: Pilot Unit Rated Gas Pressure: 1/2 PSI Mounting: Unit Warranty: 1 Yr. (Standard)
Qty	Accurex Model	Volume	External SP	Total SP	FRPM	Operating Power	Weight	Mark: M-4E - MAU1		
1	XDG-112-1-H10	4,000 CFM	0.4 in. wg	1.728 in. wg	1160	2.81 hp	573 lb.			
Motor Information Motor VFD: No Motor RPM: 1725 Windings: 1 MCA: 21.6 MOP: 35										
Heating Type: Direct Gas Gas Type: Natural Winter CO: 20.7 F Max. A: 49.0 F Max. LAT: 70.0 F Inlet: 231.5 MBH Output: 213.0 MBH Efficiency: 92% Connection: 3/4" Building Gas Pressure: 1/2 PSI Control Access: 11a										
Outlet Sound Power By Octave Band Octave Band: 63.5, 125, 250, 500, 1000, 2000, 4000, 8000 LWA: 83.3, dBA: 72.3, Sone: 21.6										
* Unit is a standard model unless noted. Details are subject to change without notice. ** Unit is a standard model unless noted. Details are subject to change without notice. *** Unit is a standard model unless noted. Details are subject to change without notice.										



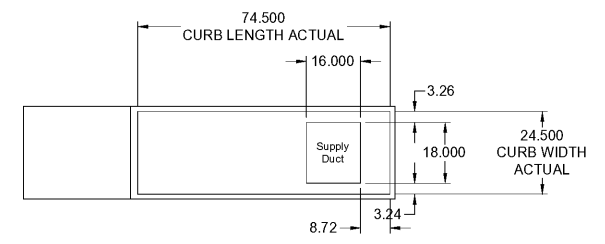
PLAN VIEW



ELEVATION VIEW

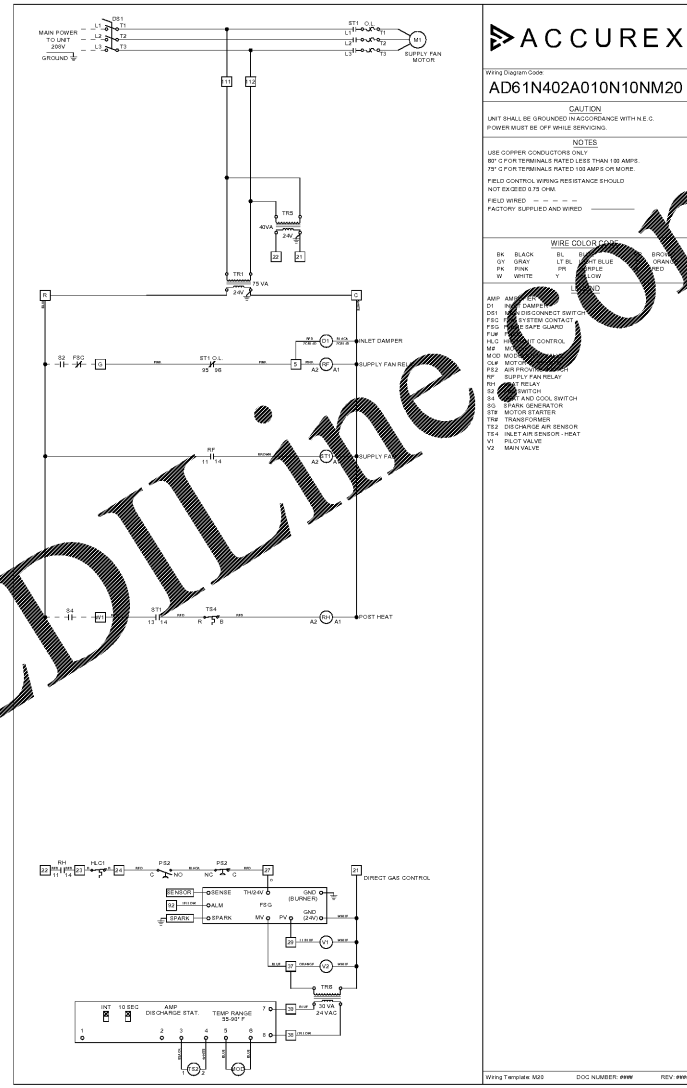


END VIEW



FOOTPRINT

NOTE: Roof Opening Requirements:
 Minimum Roof Opening: The minimum roof opening size is the duct diameter plus 0.25 in. on all sides. For example: If the duct size is 14 x 14 in. square, the minimum roof opening size is 14.5 x 14.5 in. square.
 Maximum Roof Opening: There must be a minimum clearance of 1 in. between the roof opening and the roof curb. For example: If the roof curb is 75 x 26 in. square, the maximum roof opening is 71.5 x 26.5 in. inches square.
NOTE: The weatherhood and gasket sections of the make-up air unit are not supported by the curb. This is by design, in order to help alleviate water infiltration issues. MUA Unit supports are shipped loose with unit.



ACCUREX
 AD61N402A010N10NM20
 WIRE COLOR CODE
 BK BLACK, GR GRAY, BK BROWN, WH WHITE, BL BLUE, LT LT BLUE, YN YELLOW, RD RED, GN GREEN, LG LIGHT GREEN, BK BLACK, GR GRAY, BK BROWN, WH WHITE, BL BLUE, LT LT BLUE, YN YELLOW, RD RED, GN GREEN, LG LIGHT GREEN, BK BLACK, GR GRAY, BK BROWN, WH WHITE, BL BLUE, LT LT BLUE, YN YELLOW, RD RED, GN GREEN, LG LIGHT GREEN

ACCUREX
 PROJECT: 5/31/2019
 MARK: M-4E - MAU1
 PROJECT: 5/31/2019
 MARK: M-4E - MAU1
 ACCUREX KS NE WESTERN MO
 BENJAMIN OBRIEN@ACCUREX.COM
 (816)888-9742

Consultant:
ARWIN PRIEST P.E., P.Eng.
 MECHANICAL * ENGINEER * ELECTRICAL
 242 MOUNTAIN CLOUD CIRCLE
 HIGHLANDS RANCH, CO 80126
 (303) 898-2664 pc5744@gmail.com

5280 Engineering
 www.DesignMEP.com
 720-320-7744 rjg@5280engineering.com

SEAL
 DATE :

GOOD TIMES RESTAURANTS, INC.
 141 Union Blvd, Suite 400
 Lakewood, CO 80228
 tel: (303) 384-1430

BAD DADDY'S BURGER BAR
 "SANDY PLAINS"
 3460 SANDY PLAINS RD
 SUITE 110
 MARIETTA, GA 30062

Issue Record:
 06.07.2019 FOR PLAN REVIEW
Revisions:
 08.01.2019 BAR FIX TO GREASE WST
 08.28.2019 QCR
Drawn:
 DRAWN BY: F Long
Checked:
 CHECKED BY: R Blank
Project No.:
 PROJ.FCI#: 2019-041
Contractor:
 ACCUREX HOOD DESIGN

THESE DRAWINGS WERE OBTAINED FROM ACCUREX. VERIFY LATEST DRAWINGS PRIOR TO ORDERING EQMT