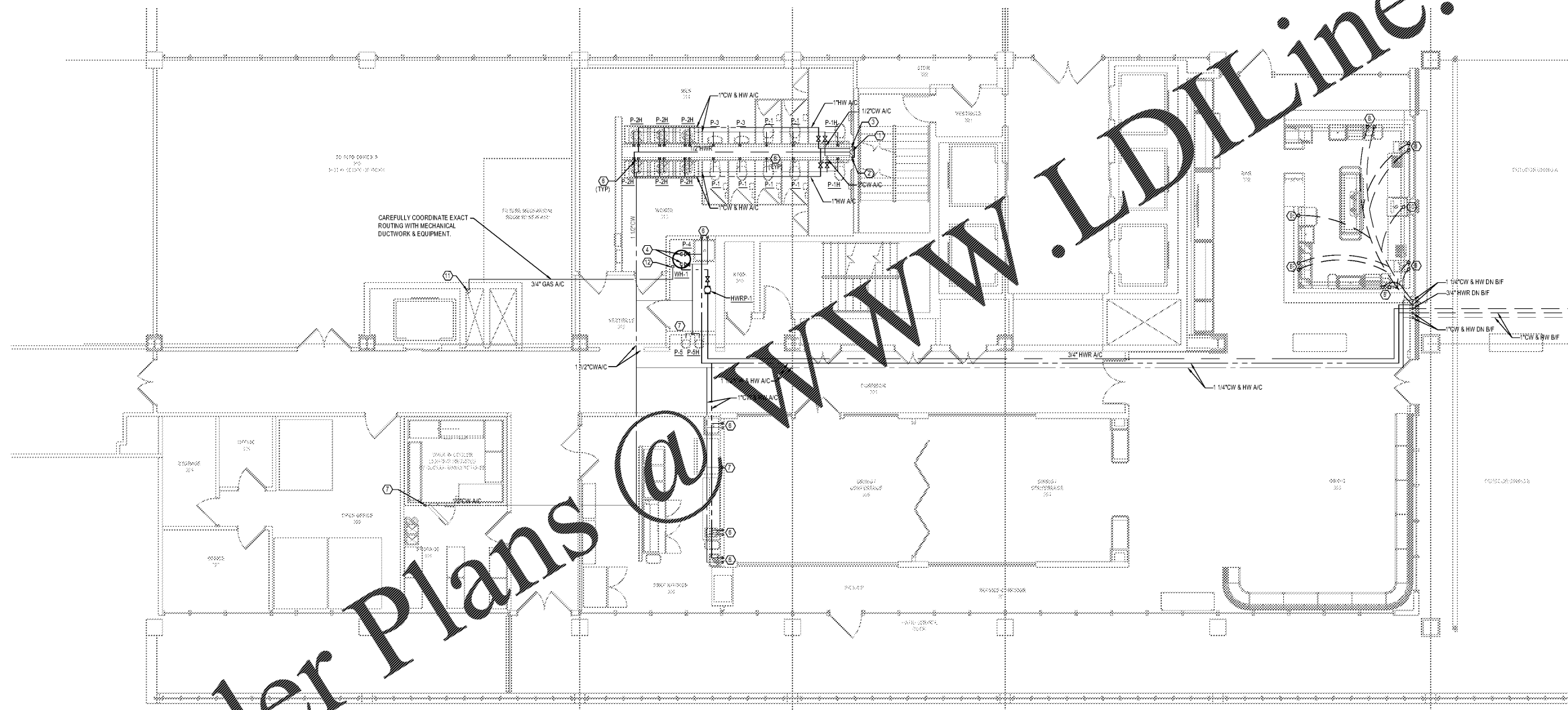




Consultant  
**WESTSIDE**  
 5525 Interstate North Pkwy  
 Suite 200  
 Atlanta, GA 30328  
 404-965-1287 tel  
 404-601-9859 fax  
 westside@westside-engineering.com

**EDGAR'S ABOVE BROAD  
 699 BROAD ST.  
 AUGUSTA, GEORGIA 30901**



Order Plans @ [www.LDILine.com](http://www.LDILine.com)

**1 PLUMBING PLAN - WATER**  
 P201 SCALE: 3/16" = 1'-0"

- KEY NOTES:**
- EXISTING CW, HW AND HWR RISERS. FIELD VERIFY EXACT LOCATION.
  - CONNECT NEW 2" CW TO EXISTING CW RISER. FIELD VERIFY EXACT LOCATION.
  - CONNECT NEW 1" HW TO EXISTING HW RISER. FIELD VERIFY EXACT LOCATION.
  - 1 1/2" CW & HW DN TO WH-1.
  - 1" CW DN.
  - 1/2" CW & HW DN.
  - 1/2" HW DN.
  - 1/2" CW & HW UP.
  - 1/2" HW UP.
  - 1/2" CW UP.
  - CONNECT NEW 3/4" GAS (2 PSI) TO EXISTING 3" GAS RISER. GAS PIPING SIZED FOR 2 PSI DELIVERY PRESSURE AND 500' FROM GAS METER TO MOST REMOTE APPLIANCE.
  - PROVIDE GAS COCK, DRIP TEE AND 199 MBH, VENTLESS, GAS REGULATOR (2 PSI TO 14" W.C.) AT WATER HEATER CONNECTION. FIELD VERIFY EXACT LOCATION OF EXISTING GAS RISER.

Project Number		1817
Revisions		
Revision History		
Number	Date	Description
	08/30/19	ISSUED FOR CONSTRUCTION
Drawing Title		PLUMBING PLAN - WATER
Drawing Status		ISSUED FOR CONSTRUCTION
Drawing Number		P201