

HARDWARE FINISH TO BE BLACK AS COMMERCIALY AVAILABLE

HARDWARE HEADINGS

- A1 DOORS: 300, 301B, 301D EACH PAIR TO HAVE:
 - 2 CONTINUOUS HINGES SL1HD x BK SEL
 - 1 EXIT DEVICE 5547EO x 622 BLK V-DUPRN
 - 1 CYLINDER TO MATCH NEW SYSTEM
 - 2 PULLS VP4261 x 9 MTG x FBPC BURNS
 - 2 CLOSERS 4040 x RAH0 x BLK LCN
 - 2 DOOR STOPS 522 x FBPC BURNS
 - 1 THRESHOLD 545 BLK REESE
 - 1 SET DOOR SEALS BY FRAME MANUFACTURER
 - 2 DOOR BOTTOM SEALS BY DOOR MANUFACTURER
 - 1 ASTRAGAL SET BY DOOR MANUFACTURER

NOTE: MOUNT PULL TO COORDINATE WITH CYLINDER. ADAPTOR PLATES AS REQUIRED FOR CLOSER.

- A2 DOORS: 302A, 307 EACH DOOR TO HAVE:
 - 1 CONTINUOUS HINGE SL1HD x BK SEL
 - 1 DEADLOCK M415505 x 456 x BLK A RITE
 - 1 CYLINDER TO MATCH NEW SYSTEM
 - 1 PUSH/PULL SET VP4261 x VP4261 x 5/9 MTG x FBPC BURNS
 - 1 CLOSER 4040 x HCNS x BLK LCN
 - 1 THRESHOLD 545 BLK REESE
 - 1 SET DOOR SEALS BY FRAME MANUFACTURER
 - 1 DOOR BOTTOM SEAL BY DOOR MANUFACTURER

NOTE: MOUNT PULL TO COORDINATE WITH CYLINDER. ADAPTOR PLATES AS REQUIRED FOR CLOSER.

- A3 DOORS: 302B, 302C

NOTE: ALL HARDWARE BY DOOR SUPPLIER.

- 1 DOORS: 301A, 303A EACH PAIR TO HAVE:
 - 8 HINGES 4B81 x 800 FBB
 - 2 EXIT DEVICES 8837L-F x 02 LEVER x 622 BLK V-DUPRN
 - 2 CYLINDERS TO MATCH NEW SYSTEM
 - 2 CLOSERS 4040 x CNS x BLK LCN
 - 1 SET DOOR SEALS 791B REESE
 - 1 EDGE SEAL 792B REESE

- 2 DOORS: 304

NOTE: ALL HARDWARE BY DOOR SUPPLIER.

- 5 DOORS: 305A, 310 EACH PAIR TO HAVE:
 - 8 HINGES 4B81 x 800 FBB
 - 1 SET ALTO F BOLTS 7862 x 545 x FBPC BURNS
 - 1 COORDINATOR 7672 x BRACKETS x FBPC BURNS
 - 1 LOCKSET-ENTRANCE RA101 720-C19 INOX (ACT)
 - 2 CLOSERS 4040 x RA x BLK LCN
 - 2 DOOR STOPS 565222 x FBPC (AS REQ) BURNS
 - 1 SET DOOR SEALS 791B REESE
 - 1 EDGE SEAL 792B REESE

- 3 DOORS: 306

- 8 HINGES 4B81 x 800 FBB
- 2 EXIT DEVICES 8837L-F BE x 02 LEVER x 622 BLK V-DUPRN
- 2 CLOSERS 4040 x CNS x BLK LCN
- 1 KICK PLATE KP50 x B4E x CSK x FBPC BURNS
- 1 SET DOOR SEALS 791B REESE
- 1 EDGE SEAL 792B REESE

- 4 DOORS: 308

- 1 CONTINUOUS HINGE SL84HD x BK SEL
- 1 LOCKSET-CLASSROOM RA101 705-C19 INOX
- 1 CLOSER 4040 x PA x BLK LCN
- 1 KICK PLATE KP50 x B4E x CSK x FBPC BURNS
- 1 DOOR STOP 565222 x FBPC (AS REQ) BURNS
- 1 SET SEALS 791B REESE

- 6 DOORS: 313, 314

- 4 HINGES BB81 x 800 FBB
- 1 PASSAGE SET RA101 701-C19 INOX
- 1 CLOSER 4040 x PA x BLK LCN
- 1 KICK PLATE KP50 x B4E x CSK x FBPC BURNS
- 1 DOOR STOP 565222 x FBPC (AS REQ) BURNS
- 1 SET SEALS 791B REESE

- 7 DOORS: 315, 322, 325

- 4 HINGES BB81 x 800 FBB
- 1 LOCKSET-CLASSROOM RA101 705-C19 INOX
- 1 OVERHEAD STOP 4124 ABH (@ 315)
- 1 DOOR STOP 565222 x FBPC (AS REQ) BURNS

- 8 DOORS: 316

- 4 HINGES 4B81 x 800 FBB
- 1 LOCKSET-CLASSROOM RA101 705-C19 INOX
- 1 OVERHEAD STOP 4124 x 54 BLK ABH (@ 322)
- 1 KICK PLATE KP50 x B4E x CSK x FBPC BURNS
- 1 DOOR STOP 565222 x FBPC (AS REQ) BURNS

- 9 DOORS: 317, 318

- 4 HINGES 4B81 x 800 FBB
- 1 EXIT DEVICE 8837L-F BE x 02 LEVER x 622 BLK V-DUPRN
- 1 CLOSER 4040 x RA x BLK LCN
- 1 KICK PLATE KP50 x B4E x CSK x FBPC BURNS
- 1 DOOR STOP 565222 x FBPC (AS REQ) BURNS
- 1 SET DOOR SEALS 791B REESE

- 10 DOORS: 319, 320

- 8 HINGES 4B81 x 800 FBB
- 1 SET ALTO F BOLTS 7862 x 545 x FBPC BURNS
- 1 SET COORDINATOR RA101 707-C19 INOX (ACT)
- 1 CLOSER 4040 x PA x BLK LCN
- 2 DOOR STOPS 565222 x FBPC (AS REQ) BURNS
- 1 SET DOOR SEALS 791B REESE
- 1 EDGE SEAL 792B REESE

- 11 DOORS: 323

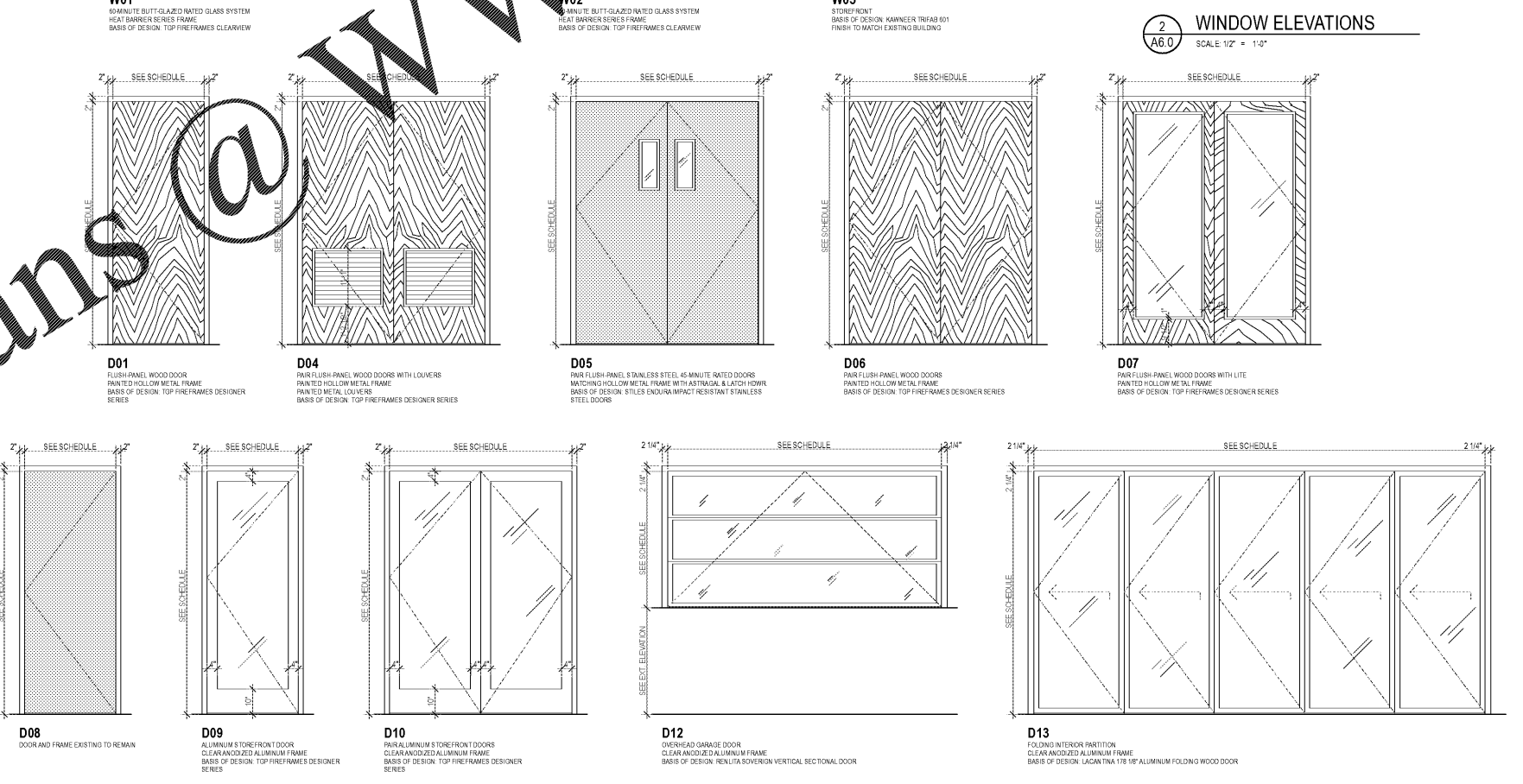
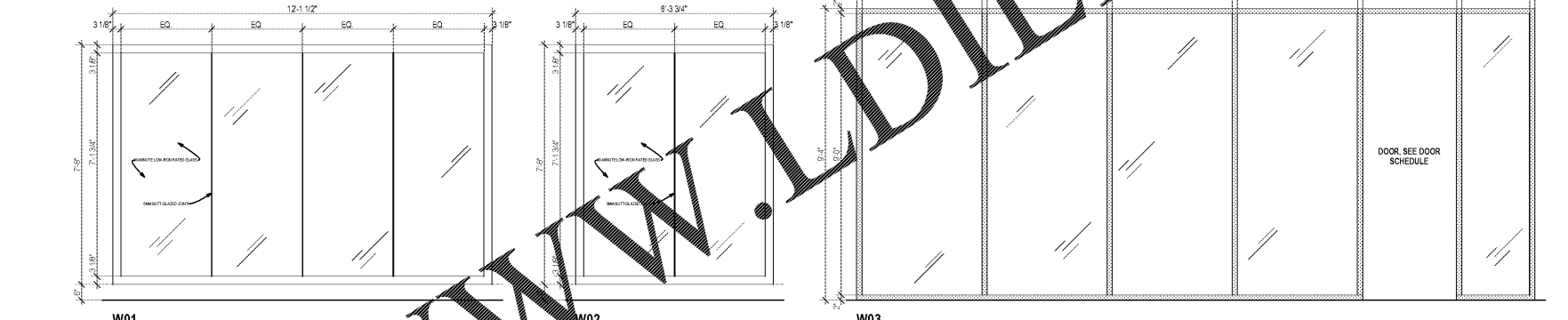
- 4 HINGES 4B81 x 800 FBB
- 1 LOCKSET-ENTRANCE RA101 720-C19 INOX
- 1 CLOSER 4040 x RA x BLK LCN
- 1 KICK PLATE KP50 x B4E x CSK x FBPC BURNS
- 1 DOOR STOP 565222 x FBPC (AS REQ) BURNS
- 1 SET DOOR SEALS 791B REESE

- 12 DOORS: 324, 326

- 4 HINGES BB81 x 800 FBB
- 1 LOCKSET-ENTRANCE RA101 720-C19 INOX
- 1 DOOR STOP 565222 x FBPC (AS REQ) BURNS

| DOOR # | LOCATION | NEW / EXISTING | WIDTH | HEIGHT | LEAF THICKNESS | LEAF MATERIAL | LEAF FINISH | FRAME MATERIAL | FRAME FINISH | DOOR ELEVATION | HARDWARE SET | FIRE RATING | NOTES |
|--------|----------------------------------|----------------|-------------|--------|----------------|------------------|-----------------|-----------------|-----------------|----------------|--------------|-------------|---|
| 300 | ELEVATOR LOBBY | New | 7'-6 3/4" | 9'-2" | 1 3/4" | ALUMINUM / GLASS | MATCH EX SYSTEM | ALUMINUM | MATCH EX SYSTEM | D10 | A1 | NOT RATED | CORRIDOR-FACING SIDE TO BE LOCKED. PROVIDE PANIC HARDWARE |
| 301A | BRIDGE TO PARKING DECK | New | 5'-0" | 8'-0" | 1 3/4" | WD / GLASS | WD-02GLASS | HOLLOW METAL | PAINT, PT-13 | D07 | 1 | 45 MINUTE | PROVIDE PANIC HARDWARE |
| 301B | SIDE CORRIDOR | New | 6'-0" | 8'-10" | 1 3/4" | ALUMINUM / GLASS | MATCH EX SYSTEM | ALUMINUM | MATCH EX SYSTEM | D10 | A1 | NOT RATED | CORRIDOR-FACING SIDE TO BE LOCKED. PROVIDE PANIC HARDWARE |
| 302A | BAR SERVICE DOOR | New | 3'-6 3/4" | 9'-2" | 1 3/4" | ALUMINUM / GLASS | MATCH EX SYSTEM | ALUMINUM | MATCH EX SYSTEM | D09 | A2 | NOT RATED | |
| 302B | OUTDOOR BAR | New | 9'-0" | 4'-6" | 1 3/4" | BY MFGR | TBD | BY MFGR | TBD | D12 | A3 | NOT RATED | GARAGE DOOR. DOOR HARDWARE TO BE PROVIDED BY DOOR MANUFACTURER |
| 302C | OUTDOOR BAR | New | 9'-0" | 4'-6" | 1 3/4" | BY MFGR | TBD | BY MFGR | TBD | D12 | A3 | NOT RATED | GARAGE DOOR. DOOR HARDWARE TO BE PROVIDED BY DOOR MANUFACTURER |
| 303A | MAIN DINING ENTRANCE | New | 5'-0" | 8'-0" | 1 3/4" | WOOD / GLASS | WD-02GLASS | HOLLOW METAL | PAINT, PT-13 | D07 | 1 | 45 MINUTE | |
| 303B | MAIN TERRACE ENTRANCE | New | 5'-0" | 8'-0" | 1 3/4" | ALUMINUM / GLASS | MATCH EX SYSTEM | HOLLOW METAL | PAINT, PT-13 | D10 | A1 | NOT RATED | PROVIDE PANIC HARDWARE |
| 304 | DINING / CONFERENCE FOLDING DOOR | New | 14'-10 1/8" | 8'-0" | 1 3/4" | BY MFGR | BY MFGR, TBD | BY MFGR | BY MFGR, TBD | D13 | 2 | NOT RATED | FOLDING DOOR. DOOR HARDWARE TO BE PROVIDED BY DOOR MANUFACTURER |
| 305A | DINING / CONFERENCE TO CORRIDOR | New | 5'-0" | 8'-0" | 1 3/4" | WOOD / GLASS | WD-02 | HOLLOW METAL | PAINT, PT-13 | D07 | 5 | 45 MINUTE | |
| 306 | PREP KITCHEN | New | 6'-0" | 8'-0" | 1 3/4" | STAINLESS STEEL | STAINLESS STEEL | STAINLESS STEEL | STAINLESS STEEL | D05 | 3 | 45 MINUTE | DOUBLE-ACTING DOOR. PROVIDE ASTRAGAL |
| 307 | PATIO SERVICE DOOR | New | 3'-6 3/4" | 8'-10" | 1 3/4" | ALUMINUM / GLASS | MATCH EXISTING | ALUMINUM | MATCH EXISTING | D09 | A2 | NOT RATED | RE-USE EXISTING OPENING |
| 308 | STORAGE / WALK-IN COOLER | New | 3'-6" | 8'-0" | 1 3/4" | WOOD | WD-02 | HOLLOW METAL | PAINT, PT-13 | D01 | 4 | 45 MINUTE | |
| 310 | FUTURE OFFICE A | New | 6'-0" | 8'-0" | 1 3/4" | WOOD | WD-02 | HOLLOW METAL | PAINT, PT-13 | D06 | 5 | 45 MINUTE | |
| 313 | WOMEN'S RESTROOM | New | 3'-0" | 8'-0" | 1 3/4" | WOOD | WD-02 | HOLLOW METAL | PAINT, PT-13 | D01 | 6 | 45 MINUTE | |
| 314 | MEN'S RESTROOM | New | 3'-0" | 8'-0" | 1 3/4" | WOOD | WD-02 | HOLLOW METAL | PAINT, PT-13 | D01 | 6 | 45 MINUTE | |
| 315 | JANITOR | New | 3'-0" | 8'-0" | 1 3/4" | WOOD | WD-02 | HOLLOW METAL | PAINT, PT-13 | D01 | 7 | 45 MINUTE | |
| 316 | STAIR 2 | Existing | 2'-8" | 7'-0" | 1 3/4" | E.T.R. | PAINT, PT-14 | HOLLOW METAL | PAINT, PT-13 | E.T.R. | 8 | NOT RATED | RE-USE EXISTING DOOR AND FRAME |
| 317 | STAIR 2 | Existing | 3'-0" | 7'-0" | 1 3/4" | E.T.R. | PAINT, PT-14 | HOLLOW METAL | PAINT, PT-13 | E.T.R. | 9 | 90 MINUTE | RE-USE EXISTING DOOR AND FRAME |
| 318 | STAIR 1 | Existing | 3'-0" | 7'-0" | 1 3/4" | E.T.R. | PAINT, PT-14 | HOLLOW METAL | PAINT, PT-13 | E.T.R. | 9 | 90 MINUTE | RE-USE EXISTING DOOR AND FRAME |
| 319A | ELECTRICAL | New | 4'-0" | 8'-0" | 1 3/4" | WOOD | WD-02 | HOLLOW METAL | PAINT, PT-13 | D04 | 10 | 45 MINUTE | |
| 319B | ELECTRICAL | New | 4'-0" | 8'-0" | 1 3/4" | WOOD | WD-02 | HOLLOW METAL | PAINT, PT-13 | D04 | 10 | 45 MINUTE | |
| 320 | TELEPHONE | New | 4'-0" | 8'-0" | 1 3/4" | WOOD | WD-02 | HOLLOW METAL | PAINT, PT-13 | D01 | 10 | 45 MINUTE | |
| 322 | STORAGE | New | 3'-0" | 8'-0" | 1 3/4" | WOOD | WD-02 | HOLLOW METAL | PAINT, PT-13 | D01 | 7 | NOT RATED | |
| 323 | OPEN OFFICE | New | 3'-6" | 8'-0" | 1 3/4" | WOOD | WD-02 | HOLLOW METAL | PAINT, PT-13 | D01 | 11 | 45 MINUTE | |
| 324 | OFFICE | New | 3'-0" | 8'-0" | 1 3/4" | WOOD | WD-02 | HOLLOW METAL | PAINT, PT-13 | D01 | 12 | NOT RATED | |
| 325 | STORAGE | New | 3'-0" | 8'-0" | 1 3/4" | WOOD | WD-02 | HOLLOW METAL | PAINT, PT-13 | D01 | 7 | NOT RATED | |
| 326 | OFFICE | New | 3'-0" | 8'-0" | 1 3/4" | WOOD | WD-02 | HOLLOW METAL | PAINT, PT-13 | D01 | 7 | NOT RATED | |
| 327 | MECHANICAL ROOM | New | 6'-0" | 8'-0" | 1 3/4" | WOOD | WD-02 | HOLLOW METAL | PAINT, PT-13 | D06 | 7 | 45 MINUTE | |

NOTE: CONTACT PHILLIPS-LANGLEY ASSOCIATES FOR DOOR HARDWARE: MARK PHILLIPS, (770) 614-0630, mark@phillips-langley.com



Order Plans @ www.wldilme.com

seiberdesign
675 Dewey St. NE
Studio 10
Atlanta GA 30308
404.875.8785
www.seiberdesign.com

8/30/19

EDGAR'S ABOVE BROAD + LANDLORD BUILDOUT
699 BROAD ST.
AUGUSTA, GEORGIA 30901

Project Number: 1817
Revisions:
Revision History:
Number Date Description
1 <DATE ISSUE> RELEASE FOR
2
3
4
5
6
7
8
9
10
11
12
13
14
15
16
17
18
19
20
21
22
23
24
25
26
27
28
29
30
31
32
33
34
35
36
37
38
39
40
41
42
43
44
45
46
47
48
49
50
51
52
53
54
55
56
57
58
59
60
61
62
63
64
65
66
67
68
69
70
71
72
73
74
75
76
77
78
79
80
81
82
83
84
85
86
87
88
89
90
91
92
93
94
95
96
97
98
99
100

DOOR & WINDOW SCHEDULES
Drawing Title
Drawing Status
ISSUED FOR CONSTRUCTION
Drawing Number

1 A6.0 DOOR AND FRAME ELEVATIONS
SCALE: 1/2" = 1'-0"

A6.0
Printed: 8/30/19