



COOPER CARRY
THE CENTER FOR CONNECTIVE ARCHITECTURE

191 Peachtree Street NE
Suite 2400
Atlanta, GA 30303-1770
(404) 237-2000
coopercarry.com

ATLANTA NEW YORK WASHINGTON

©2018 COOPER CARRY

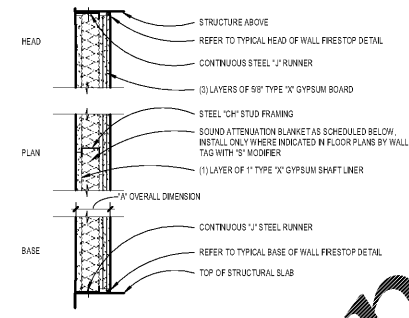
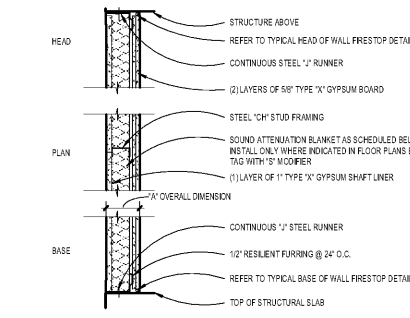
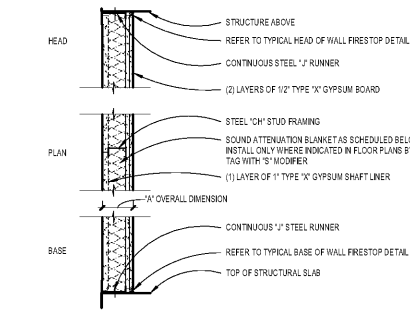
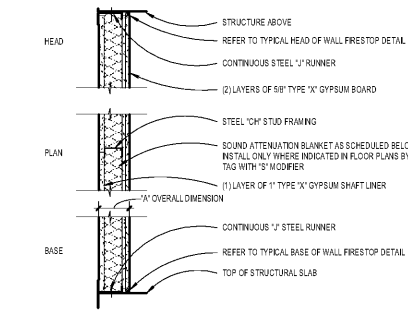
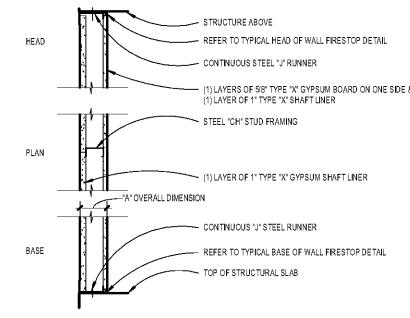
SCOPE DOCUMENTS
The Contract Documents issued for (Conceptual Design, Schematic Design, Design Development, Partial Construction Documents or Other Issuance up to Issued for Construction) are intended to be at that level of completion and as such, may be neither complete nor coordinated. The (Construction Manager, Contractor, Design/Builder) is responsible for complete and coordinated pricing (and execution) of the Work, and shall include items necessary for the proper execution and completion of the Work, as shown, specified, reasonably inferred or required for a complete Project. For Work of ongoing design, systems, assemblies, components and materials shall comply with national, state and local code requirements. The (Construction Manager, Contractor, Design/Builder) shall inform the Owner and Architect in timely fashion of any discovered omissions, inconsistencies or errors in the Contract Documents.

ISSUANCES			
No.	Drawing	Issue Description	Date
51	INTERIORS PRICING SET		08/13/19

SHAFT WALL PARTITIONS

CHASE WALL PARTITIONS

FURRING WALLS - STEEL STUD



1X 1-HOUR RATED STEEL FRAMED SHAFT WALL
NON-LOAD BEARING - (1) LAYERS 5/8" GYPSUM BOARD

DESIGNATION	NO.	STUD SIZE	"A" DIM.	GA	O.C. (MAX)	FIRE TEST	LIMITING HEIGHT (NOTE 1)				DEFL.	STC CLASS	SOUN D (NOTE)	SAB TEST
							5 pcf	7.5 pcf	10 pcf	15 pcf				
1X310	2-1/2	3-1/8	25	24"	1416 S15/8"	5-9"	9-9"	7-9"	9-9"	L240				
			25	24"	1416 S15/8"	12-3"	10-6"	9-3"	8-6"	L06				
1X458	4"	4-5/8	25	24"	1416 S15/8"	15-10	13-4"	10-4"	8-11"	L240	30	USG-04 1001		
			20	24"	1416 S15/8"	15-3"	13-4"	12-2"	10-7"	L060				
1X650	6"	6-5/8	20	24"	1416 S15/8"	24-3"	21-2"	19-3"	15-6"	L240				
			20	24"	1416 S15/8"	21-2"	18-6"	16-9"	13-6"	L060				

EDIT NOTE: SPAN TABLES AVAILABLE ONLY FOR 20 GA 6" STUDS

2X 2-HOUR RATED STEEL FRAMED SHAFT WALL
NON-LOAD BEARING - (2) LAYERS 5/8" GYPSUM BOARD

DESIGNATION	NO.	STUD SIZE	"A" DIM.	GA	O.C. (MAX)	FIRE TEST	LIMITING HEIGHT (NOTE 1)				DEFL.	STC CLASS	SOUN D (NOTE)	SAB TEST
							5 pcf	7.5 pcf	10 pcf	15 pcf				
2X324	2-1/2	3-3/4	25	24"	1416 S15/8"	12-11"	10-9"	9-9"	7-9"	L240	40	RA-07-04.7 150	1"	
			20	24"	1416 S15/8"	10-4"	11-7"	10-7"	9-3"	L06				
2X514	4"	5-1/4	25	24"	1416 S15/8"	16-11"	13-10"	11-11"	9-8"	L240	50	RA-07-04.4 110	3"	
			20	24"	1416 S15/8"	15-10"	13-10"	12-3"	11-4"	L060				
2X714	6"	7-1/4	20	24"	1416 S15/8"	20-11"	21-11"	19-11"	17-9"	L240				
			20	24"	1416 S15/8"	21-11"	19-2"	17-9"	15-2"	L060				

EDIT NOTE: SPAN TABLES AVAILABLE ONLY FOR 20 GA 6" STUDS

2X 2-HOUR RATED STEEL FRAMED SHAFT WALL
NON-LOAD BEARING - (2) LAYERS 1/2" GYPSUM BOARD

DESIGNATION	NO.	STUD SIZE	"A" DIM.	GA	O.C. (MAX)	FIRE TEST	LIMITING HEIGHT (NOTE 1)				DEFL.	STC CLASS	SOUN D (NOTE)	SAB TEST
							5 pcf	7.5 pcf	10 pcf	15 pcf				
2X312	2-1/2	3-1/2	25	24"	1416 S15/8"	12-4"	10-9"	9-9"	7-9"	L240	40	RA-07-04.6 150	1"	
			20	24"	1416 S15/8"	10-4"	11-7"	10-7"	9-3"	L06				
2X508	4"	5"	25	24"	1416 S15/8"	16-11"	13-10"	11-11"	9-8"	L240	50	RA-07-04.3 110	3"	
			20	24"	1416 S15/8"	15-10"	13-10"	12-3"	11-4"	L060				
2X706	6"	7"	20	24"	1416 S15/8"	20-11"	21-11"	19-11"	17-9"	L240				
			20	24"	1416 S15/8"	21-11"	19-2"	17-9"	15-2"	L060				

EDIT NOTE: SPAN TABLES AVAILABLE ONLY FOR 20 GA 6" STUDS

2X 2-HOUR RATED STEEL FRAMED SHAFT WALL
NON-LOAD BEARING - (2) LAYERS 5/8" GYPSUM BOARD W/ RESILIENT FURRING

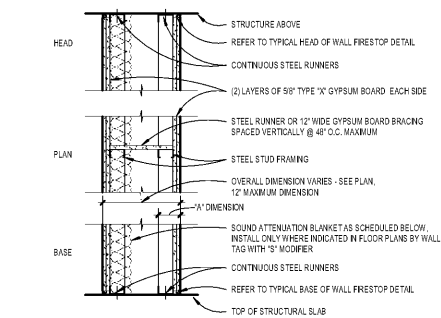
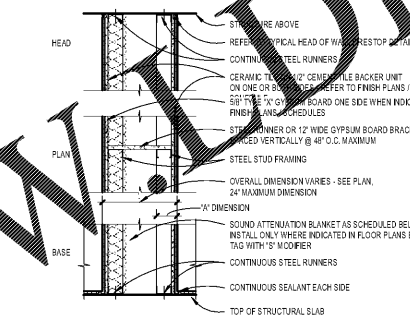
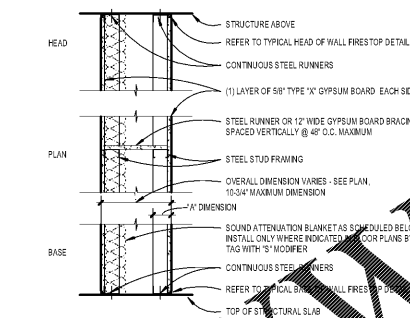
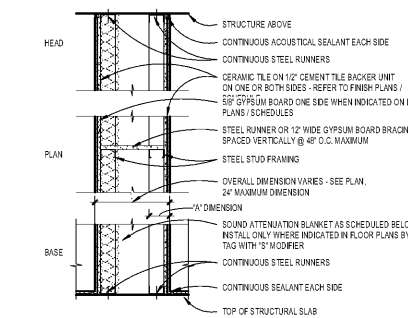
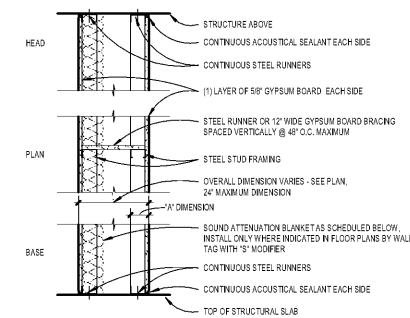
DESIGNATION	NO.	STUD SIZE	"A" DIM.	GA	O.C. (MAX)	FIRE TEST	LIMITING HEIGHT (NOTE 1)				DEFL.	STC CLASS	SOUN D (NOTE)	SAB TEST
							5 pcf	7.5 pcf	10 pcf	15 pcf				
2X414	2-1/2	4-1/4	25	24"	1416 S15/8"	12-4"	10-9"	9-9"	7-9"	L240				
			20	24"	1416 S15/8"	10-4"	11-7"	10-7"	9-3"	L06				
2X534	4"	5-3/4	25	24"	1416 S15/8"	16-11"	13-10"	11-11"	9-8"	L240	50	USG-04 1000	3"	
			20	24"	1416 S15/8"	15-10"	13-10"	12-3"	11-4"	L060				
2X734	6"	7-3/4	20	24"	1416 S15/8"	20-11"	21-11"	19-11"	17-9"	L240				
			20	24"	1416 S15/8"	21-11"	19-2"	17-9"	15-2"	L060				

EDIT NOTE: SPAN TABLES AVAILABLE ONLY FOR 20 GA 6" STUDS

3X 3-HOUR RATED STEEL FRAMED SHAFT WALL
NON-LOAD BEARING - (3) LAYERS 5/8" GYPSUM BOARD

DESIGNATION	NO.	STUD SIZE	"A" DIM.	GA	O.C. (MAX)	FIRE TEST	LIMITING HEIGHT (NOTE 1)				DEFL.	STC CLASS	SOUN D (NOTE)	SAB TEST
							5 pcf	7.5 pcf	10 pcf	15 pcf				
3X438	2-1/2	4-3/8	25	24"	1416 S15/8"	12-11"	10-9"	9-9"	7-9"	L240				
			20	24"	1416 S15/8"	10-4"	11-7"	10-7"	9-3"	L06				
3X578	4"	5-7/8	25	24"	1416 S15/8"	16-11"	13-10"	11-11"	9-8"	L240	51	RA-07-04.6 110	3"	
			20	24"	1416 S15/8"	15-10"	13-10"	12-3"	11-4"	L060				
3X778	6"	7-7/8	20	24"	1416 S15/8"	20-11"	21-11"	19-11"	17-9"	L240				
			20	24"	1416 S15/8"	21-11"	19-2"	17-9"	15-2"	L060				

EDIT NOTE: SPAN TABLES AVAILABLE ONLY FOR 20 GA 6" STUDS



OC NON-RATED STEEL FRAMED CHASE WALL
NON-LOAD BEARING - (1) LAYER 5/8" GYPSUM BOARD, EACH SIDE

DESIGNATION	NO.	STUD SIZE	"A" DIM.	GA	O.C. (MAX)	FIRE TEST	LIMITING HEIGHT (NOTE 1)				DEFL.	STC CLASS	SOUN D (NOTE)	SAB TEST
							5 pcf	7.5 pcf	10 pcf	15 pcf				
OC1	4	1-5/8	2-1/4	25	24"	11-6"	11-6"	11-6"	11-6"	L240	52	RA-TL-76-150	3-1/2"	
			25	18"	11-6"					L06				
OC318	2-1/2	3-1/8	25	24"	15-6"	15-6"	15-6"	15-6"	15-6"	L240	52	RA-TL-76-150	3-1/2"	
			20	18"	15-6"					L060				
OC4	4	3-5/8	4-1/4	25	24"	19-3"	19-3"	19-3"	19-3"	L240	52	RA-TL-76-150	3-1/2"	
			25	18"	19-3"					L060				

OC NON-RATED STEEL FRAMED CHASE WALL
NON-LOAD BEARING - TILE ON 1/2" CEMENT BACKER BOARD

DESIGNATION	NO.	STUD SIZE	"A" DIM.	GA	O.C. (MAX)	FIRE TEST	LIMITING HEIGHT (NOTE 1)				DEFL.	STC CLASS	SOUN D (NOTE)	SAB TEST
							5 pcf	7.5 pcf	10 pcf	15 pcf				
OC2	1-5/8	2-5/8	20	18"	11-6"	11-6"	11-6"	11-6"	11-6"	L06	60	SA-840 324	3"	
			20	16"	11-6"					L06				
OC312	2-1/2	3-1/2	25	24"	15-6"	15-6"	15-6"	15-6"	15-6"	L240	57	RA-TL-76-150	3-1/2"	
			20	18"	15-6"					L060				
OC6	3-5/8	4-5/8	25	18"	19-3"	19-3"	19-3"	19-3"	19-3"	L240	60	SA-840 324	3"	
			25	16"	19-3"					L060				

1C 1-HOUR RATED STEEL FRAMED CHASE WALL
NON-LOAD BEARING - (1) LAYER 5/8" GYPSUM BOARD, EACH SIDE

DESIGNATION	NO.	STUD SIZE	"A" DIM.	GA	O.C. (MAX)	FIRE TEST	LIMITING HEIGHT (NOTE 1)				DEFL.	STC CLASS	SOUN D (NOTE)	SAB TEST
							5 pcf	7.5 pcf	10 pcf	15 pcf				
1C214	1-5/8	2-5/8	25	24"	1420	11-6"	11-6"	11-6"	11-6"	L240	52	RA-TL-76-150	3-1/2"	
			25	18"	1420	11-6"				L06				
1C318	2-1/2	3-1/8	25	24"	1420	15-6"	15-6"	15-6"	15-6"	L240	52	RA-TL-76-150	3-1/2"	
			20	18"	1420	15-6"				L060				
1C40	3-5/8	4-5/8	25	24"	1420	19-3"	19-3"	19-3"	19-3"	L240	52	RA-TL-76-150	3-1/2"	
			25	18"	1420	19-3"				L060				

1C 1-HOUR RATED STEEL FRAMED CHASE WALL
NON-LOAD BEARING - TILE ON 1/2" CEMENT BACKER BOARD

DESIGNATION	NO.	STUD SIZE	"A" DIM.	GA	O.C. (MAX)	FIRE TEST	LIMITING HEIGHT (NOTE 1)				DEFL.	STC CLASS	SOUN D (NOTE)	SAB TEST
							5 pcf	7.5 pcf	10 pcf	15 pcf				
1C28	1-5/8	2-5/8	20	18"	11-6"	11-6"	11-6"	11-6"	11-6"	L06	60	SA-840 324	3"	
			20	16"	11-6"					L06				
1C312	2-1/2	3-1/2	25	24"	1420	15-6"	15-6"	15-6"	15-6"	L240	57	RA-TL-76-150	3-1/2"	
			20	18"	1420	15-6"				L060				
1C40	3-5/8	4-5/8	25	18"	19-3"	19-3"	19-3"	19-3"	19-3"	L240	60	SA-840 324	3"	
			25	16"	19-3"					L060				

2C 2-HOUR RATED STEEL FRAMED CHASE WALL
NON-LOAD BEARING - (2) LAYERS 5/8" GYPSUM BOARD, EACH SIDE

DESIGNATION	NO.	STUD SIZE	"A" DIM.	GA	O.C. (MAX)	FIRE TEST	LIMITING HEIGHT (NOTE 1)				DEFL.	STC CLASS	SOUN D (NOTE)	SAB TEST
							5 pcf	7.5 pcf	10 pcf	15 pcf				
2C78	1-5/8	2-7/8	25	24"	1420	12-6"	12-6"	12-6"	12-6"	L240	57	RA-TL-76-150	3-1/2"	
			25	18"	1420	12-6"				L06				
2C314	2-1/2	3-3/4	25	24"	1420	16-0"	16-0"	16-0"	16-0"	L240	57	RA-TL-76-150	3-1/2"	
			20	18"	1420	16-0"				L060				
2C47	3-5/8	4-7/8	25	24"	1420	19-3"	19-3"	19-3"	19-3"	L240	57	RA-TL-76-150	3-1/2"	
			25	18"	1420	21-3"				L060				

