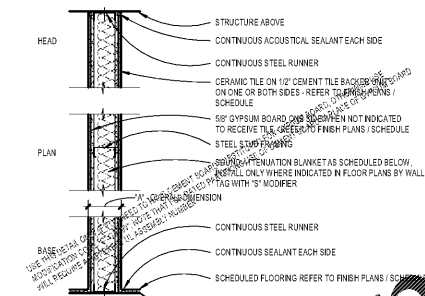
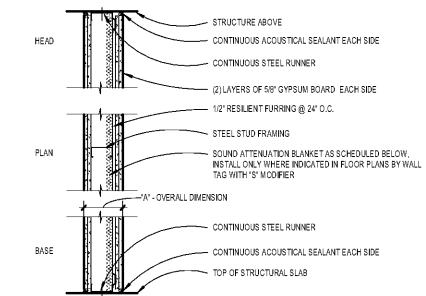
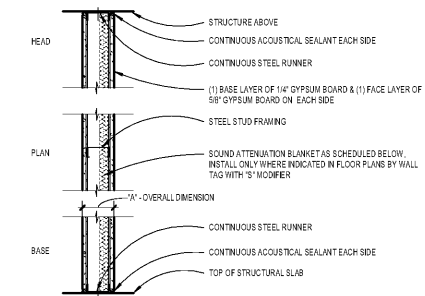
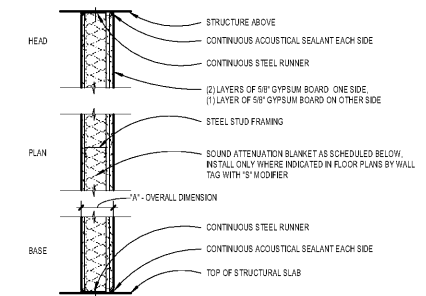
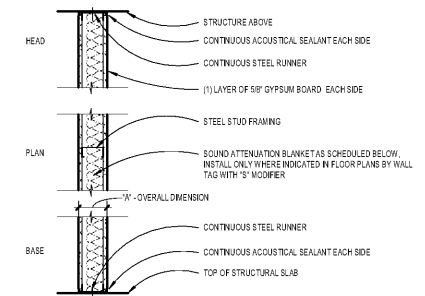




SCOPE DOCUMENTS
The Contract Documents issued for (Conceptual Design, Schematic Design, Design Development, Partial Construction Documents or Other Issuance up to Issued for Construction) are intended to be at that level of completion and as such, may be neither complete nor coordinated. The (Construction Manager, Contractor, Design/Builder) is responsible for complete and coordinated pricing (and execution) of the Work, and shall include items necessary for the proper execution and completion of the Work, as shown, specified, reasonably inferred or required for a complete Project. For work of ongoing design, systems, assemblies, components and materials shall comply with national, state and local code requirements. The (Construction Manager, Contractor, Design/Builder) shall inform the Owner and Architect in timely fashion of any discovered omissions, inconsistencies or errors in the Contract Documents.

ISSUANCES		
No.	Drawing Issue Description	Date
1	INTERIORS PRICING SET	08/13/19



OS NON-RATED STEEL FRAMED PARTITION
NON-LOAD BEARING - (1) LAYER 5/8\" GYPSUM BOARD, EACH SIDE

DESIGNATION	NO.	STUD SIZE	\"A\" DIM.	GA	O.C. (MAX)	FIRE TEST	LIMITING HEIGHT (NOTE 1)				DEFL.	\"S\" MODIFIER		
							5 paf	7.5 paf	10 paf	15 paf		STC CLASS	SOUN D NOTE 2	SAB TEST
0833 4	2-1/2	5-3/4	25	24	10-7	10-7	9-3	9-3	9-3	L240	47	SA-801001	1-1/2	
							11-2	9-8	9-8	L300				
0847 5	3-5/8	4-7/8	25	24	13-5	11-2	9-3	9-3	9-3	L240	51	RA-1L-50-185	3	
							14-3	12-4	11-4	L300				
0854 4	4	5-1/4	25	24	14-2	12-1	10-5	10-5	10-5	L240	51	RA-1L-50-185	3	
							15-11	13-9	12-8	L300				
0874 6	7-1/4	25	24	16-8	13-9	11-5	11-5	11-5	11-5	L240	51	RA-1L-50-185	3	
							12-4	12-4	12-4	L300				

OS NON-RATED STEEL FRAMED PARTITION
NON-LOAD BEARING - (1) & (2) LAYER(S) 5/8\" GYPSUM BOARD, ASYMMETRICAL

DESIGNATION	NO.	STUD SIZE	\"A\" DIM.	GA	O.C. (MAX)	FIRE TEST	LIMITING HEIGHT (NOTE 1)				DEFL.	\"S\" MODIFIER		
							5 paf	7.5 paf	10 paf	15 paf		STC CLASS	SOUN D NOTE 2	SAB TEST
0848 2	2-1/2	4-3/8	25	24	10-7	10-7	9-3	9-3	9-3	L240	50	SA-80054	1-1/2	
							11-2	9-8	9-8	L300				
0852 3	3-5/8	5-1/2	25	24	13-5	11-2	9-3	9-3	9-3	L240	50	WP-103	3-1/2	
							14-3	12-4	11-4	L300				
0853 4	4	5-7/8	25	24	14-2	12-1	10-5	10-5	10-5	L240	50	WP-103	3-1/2	
							15-11	13-9	12-8	L300				
0878 6	7-7/8	25	24	16-8	13-9	11-5	11-5	11-5	11-5	L240	50	WP-103	3-1/2	
							12-4	12-4	12-4	L300				

OS NON-RATED STEEL FRAMED PARTITION
NON-LOAD BEARING - (1) LAYER 1/4\" GYPSUM BOARD, EACH SIDE

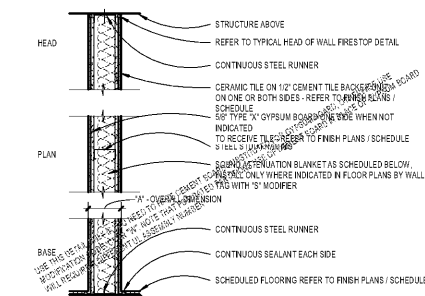
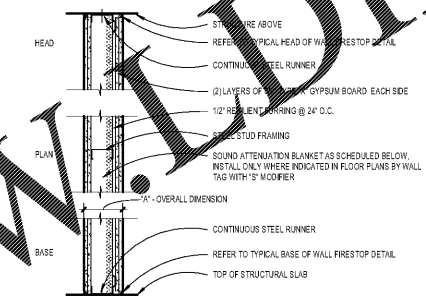
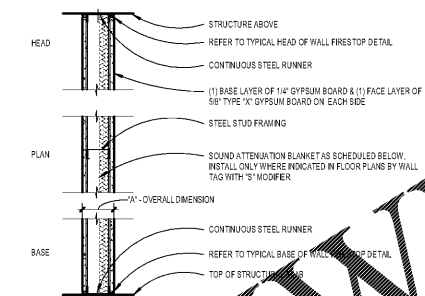
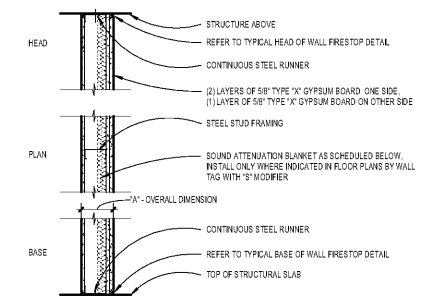
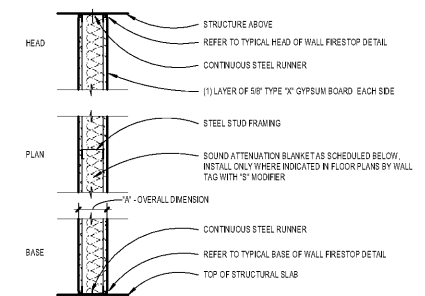
DESIGNATION	NO.	STUD SIZE	\"A\" DIM.	GA	O.C. (MAX)	FIRE TEST	LIMITING HEIGHT (NOTE 1)				DEFL.	\"S\" MODIFIER		
							5 paf	7.5 paf	10 paf	15 paf		STC CLASS	SOUN D NOTE 2	SAB TEST
0841 2	2-1/2	4-1/4	25	24	10-7	10-7	9-3	9-3	9-3	L240	55	WP-103	1-1/2	
							11-2	9-8	9-8	L300				
0858 3	3-5/8	5-3/8	25	24	13-5	11-2	9-3	9-3	9-3	L240	55	WP-103	1-1/2	
							14-3	12-4	11-4	L300				
0859 4	4	5-3/4	25	24	14-2	12-1	10-5	10-5	10-5	L240	55	WP-103	1-1/2	
							15-11	13-9	12-8	L300				
0873 6	7-3/4	25	24	16-8	13-9	11-5	11-5	11-5	11-5	L240	55	WP-103	1-1/2	
							12-4	12-4	12-4	L300				

OS NON-RATED STEEL FRAMED PARTITION
NON-LOAD BEARING - (2) LAYERS 5/8\" GYPSUM BOARD, EACH SIDE W/ 1/2\" FURRING

DESIGNATION	NO.	STUD SIZE	\"A\" DIM.	GA	O.C. (MAX)	FIRE TEST	LIMITING HEIGHT (NOTE 1)				DEFL.	\"S\" MODIFIER		
							5 paf	7.5 paf	10 paf	15 paf		STC CLASS	SOUN D NOTE 2	SAB TEST
0891 2	2-1/2	5-1/2	25	24	10-7	10-7	9-3	9-3	9-3	L240	51	RA-1L-50-214	1	
							11-2	9-8	9-8	L300				
0898 3	3-5/8	5-5/8	25	24	13-5	11-2	9-3	9-3	9-3	L240	61	RA-1L-50-214	1	
							14-3	12-4	11-4	L300				
0870 4	4	7	25	24	14-2	12-1	10-5	10-5	10-5	L240	61	RA-1L-50-214	1	
							15-11	13-9	12-8	L300				
0890 6	6	9	25	24	16-8	13-9	11-5	11-5	11-5	L240	61	RA-1L-50-214	1	
							12-4	12-4	12-4	L300				

OS NON-RATED STEEL STUD PARTITION
NON-LOAD BEARING - TILE ON 1/2\" CEMENT BACKER BOARD

DESIGNATION	NO.	STUD SIZE	\"A\" DIM.	GA	O.C. (MAX)	FIRE TEST	LIMITING HEIGHT (NOTE 1)				DEFL.	\"S\" MODIFIER		
							5 paf	7.5 paf	10 paf	15 paf		STC CLASS	SOUN D NOTE 2	SAB TEST
1855 3	3-5/8	5-5/8	25	24	14-3	12-4	11-4	10-1	10-1	L300	48	SA-84001	3	
							12-4	12-4	12-4	L300				
1858 6	6	9	25	24	16-8	13-9	11-5	11-5	11-5	L300	48	SA-84001	3	
							12-4	12-4	12-4	L300				



1S 1-HOUR RATED STEEL FRAMED PARTITION
NON-LOAD BEARING - (1) LAYER 5/8\" GYPSUM BOARD, EACH SIDE

DESIGNATION	NO.	STUD SIZE	\"A\" DIM.	GA	O.C. (MAX)	FIRE TEST	LIMITING HEIGHT (NOTE 1)				DEFL.	\"S\" MODIFIER		
							5 paf	7.5 paf	10 paf	15 paf		STC CLASS	SOUN D NOTE 2	SAB TEST
1834 2	2-1/2	5-3/4	25	24	10-7	10-7	9-3	9-3	9-3	L240	45	RA-1L-50-185	1-1/2	
							11-2	9-8	9-8	L300				
1847 5	3-5/8	4-7/8	25	24	13-5	11-2	9-3	9-3	9-3	L240	51	RA-1L-50-185	3	
							14-3	12-4	11-4	L300				
1854 4	4	5-1/4	25	24	14-2	12-1	10-5	10-5	10-5	L240	51	RA-1L-50-185	3	
							15-11	13-9	12-8	L300				
1874 6	7-1/4	25	24	16-8	13-9	11-5	11-5	11-5	11-5	L240	51	RA-1L-50-185	3	
							12-4	12-4	12-4	L300				

1S 1-HOUR RATED STEEL FRAMED PARTITION
NON-LOAD BEARING - (1) & (2) LAYER(S) 5/8\" GYPSUM BOARD, ASYMMETRICAL

DESIGNATION	NO.	STUD SIZE	\"A\" DIM.	GA	O.C. (MAX)	FIRE TEST	LIMITING HEIGHT (NOTE 1)				DEFL.	\"S\" MODIFIER		
							5 paf	7.5 paf	10 paf	15 paf		STC CLASS	SOUN D NOTE 2	SAB TEST
1848 2	2-1/2	4-3/8	25	24	10-7	10-7	9-3	9-3	9-3	L240	50	SA-80054	1-1/2	
							11-2	9-8	9-8	L300				
1852 3	3-5/8	5-1/2	25	24	13-5	11-2	9-3	9-3	9-3	L240	50	SA-80054	1-1/2	
							14-3	12-4	11-4	L300				
1853 4	4	5-7/8	25	24	14-2	12-1	10-5	10-5	10-5	L240	50	SA-80054	1-1/2	
							15-11	13-9	12-8	L300				
1878 6	7-7/8	25	24	16-8	13-9	11-5	11-5	11-5	11-5	L240	50	SA-80054	1-1/2	
							12-4	12-4	12-4	L300				

1S 1-HOUR RATED STEEL FRAMED PARTITION
NON-LOAD BEARING - (1) LAYER 1/4\" GYPSUM BOARD, EACH SIDE

DESIGNATION	NO.	STUD SIZE	\"A\" DIM.	GA	O.C. (MAX)	FIRE TEST	LIMITING HEIGHT (NOTE 1)				DEFL.	\"S\" MODIFIER		
							5 paf	7.5 paf	10 paf	15 paf		STC CLASS	SOUN D NOTE 2	SAB TEST
1841 2	2-1/2	4-1/4	25	24	10-7	10-7	9-3	9-3	9-3	L240	55	WP-103	1-1/2	
							11-2	9-8	9-8	L300				
1858 3	3-5/8	5-3/8	25	24	13-5	11-2	9-3	9-3	9-3	L240	55	WP-103	1-1/2	
							14-3	12-4	11-4	L300				
1859 4	4	5-3/4	25	24	14-2	12-1	10-5	10-5	10-5	L240	55	WP-103	1-1/2	
							15-11	13-9	12-8	L300				
1873 6	7-3/4	25	24	16-8	13-9	11-5	11-5	11-5	11-5	L240	55	WP-103	1-1/2	
							12-4	12-4	12-4	L300				

1S 1-HOUR RATED STEEL FRAMED PARTITION
NON-LOAD BEARING - (2) LAYERS 5/8\" GYPSUM BOARD, EACH SIDE W/ 1/2\" FURRING

DESIGNATION	NO.	STUD SIZE	\"A\" DIM.	GA	O.C. (MAX)	FIRE TEST	LIMITING HEIGHT (NOTE 1)				DEFL.	\"S\" MODIFIER		
							5 paf	7.5 paf	10 paf	15 paf		STC CLASS	SOUN D NOTE 2	SAB TEST
1891 2	2-1/2	5-1/2	25	24	10-7	10-7	9-3	9-3	9-3	L240	51	RA-1L-50-214	1	
							11-2	9-8	9-8	L300				
1898 3	3-5/8	5-5/8	25	24	13-5	11-2	9-3	9-3	9-3	L240	61	RA-1L-50-214	1	
							14-3	12-4	11-4	L300				
1870 4	4	7	25	24	14-2	12-1	10-5	10-5	10-5	L240	61	RA-1L-50-214	1	
							15-11	13-9	12-8	L300				
1890 6	6	9	25	24	16-8	13-9	11-5	11-5	11-5	L240	61	RA-1L-50-214	1	
							12-4	12-4	12-4	L300				

1S 1-HOUR RATED STEEL STUD PARTITION
NON-LOAD BEARING - 1/4\" TILE & 1/2\" CEMENT BACKER UNITS

DESIGNATION	NO.	STUD SIZE	\"A\" DIM.	GA	O.C. (MAX)	FIRE TEST	LIMITING HEIGHT (NOTE 1)				DEFL.	\"S\" MODIFIER		
							5 paf	7.5 paf	10 paf	15 paf		STC CLASS	SOUN D NOTE 2	SAB TEST
1855 3	3-5/8	5-5/8	25	24	14-3	12-4	11-4	10-1	10-1	L300	48	SA-84001	3	
							12-4	12-4	12-4	L300				
1880 6	6	9	25	24										