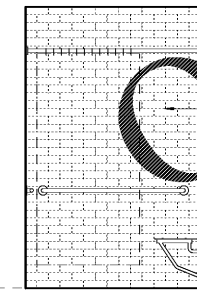


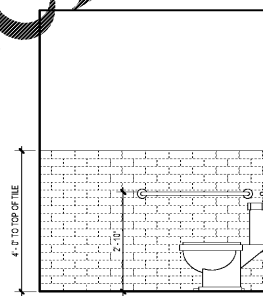


SCOPE DOCUMENTS
The Contract Documents issued for [Conceptual Design, Schematic Design, Design Development, Partial Construction Documents or Other Issuance up to Issued for Construction] are intended to be at that level of completion and as such, may be neither complete nor coordinated. The [Construction Manager, Contractor, Design/Builder] is responsible for complete and coordinated pricing [and execution] of the Work, and shall include items necessary for the proper execution and completion of the Work, as shown, specified, reasonably inferred or required for a complete Project. For Work of delegated designs, systems, assemblies, components and materials shall comply with national, state and local code requirements. The [Construction Manager, Contractor, Design/Builder] shall inform the Owner and Architect, in timely fashion, of any discovered omissions, inconsistencies or errors in the Contract Documents.

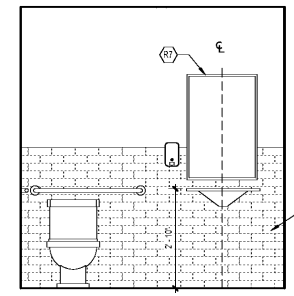
ISSUANCES		
No.	Drawing Issue Description	Date
	INTERIORS PRICING SET	08/13/19



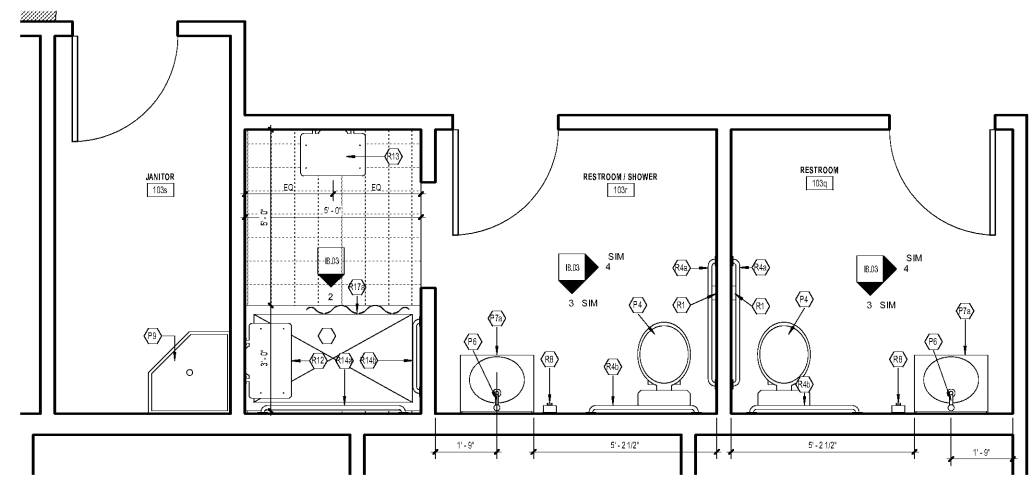
2 SHOWER ELEVATION
SCALE: 1/2" = 1'-0"



4 OFFICE RESTROOM ELEVATION
SCALE: 1/2" = 1'-0"



3 OFFICE RESTROOM ELEVATION
SCALE: 1/2" = 1'-0"



1 ENLARGED PLAN - OFFICE RESTROOM & SHOWER
SCALE: 1/2" = 1'-0"

**St Vincent de Paul Georgia
Council Headquarters**

2050 Chamblee Tucker Rd
Unit C D & E
Chamblee, GA 30314

St Vincent de Paul Georgia

**TYPICAL RESTROOM PLANS
AND ELEVATIONS**

BRIAN PARKER	20180316
Principal Designer	Project No.
GIVENETH KOVAR	08/13/2019
Project Manager	Date
M.S. & M.B.	
Project Architect	
WVIAN MOGWANJA	
Staff Architect	

18.03

PROJECT NUMBER: 20180316 PROJECT NAME: St Vincent de Paul Georgia Council Headquarters
SHEET NUMBER: 18.03, TYPICAL RESTROOM PLANS AND ELEVATIONS
M:\2018\20180316\7-Drawings\18.03-7-1 Revit\Users\20180316_2017_SVDP_07302019_baird02244.rvt
8/14/2019 10:40:13 AM

Order Plans @ www.LDILine.com