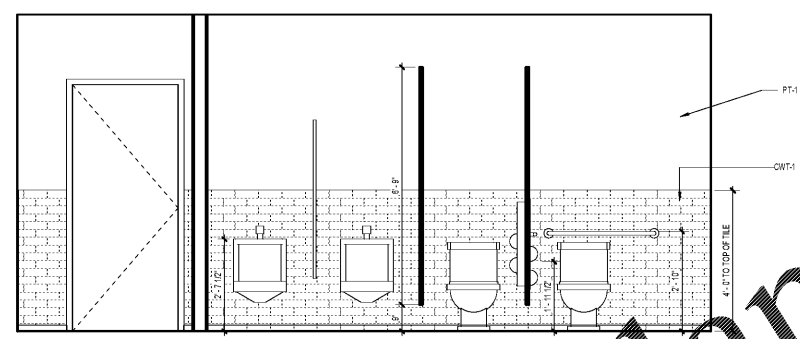




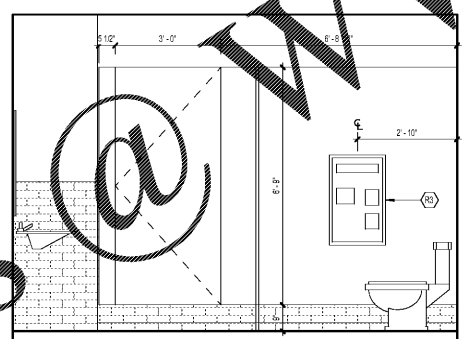
SCOPE DOCUMENTS

The Contract Documents Issued for [Conceptual Design, Schematic Design, Design Development, Partial Construction Documents or Other Issuance up to Issued for Construction] are intended to be at that level of completion and as such, may be neither complete nor coordinated. The [Construction Manager, Contractor, Design/Builder] is responsible for complete and coordinated pricing [and execution] of the Work, and shall include items necessary for the proper execution and completion of the Work, as shown, specified, reasonably inferred or required for a complete Project. For Work of designed designs, systems, assemblies, components and materials shall comply with national, state and local code requirements. The [Construction Manager, Contractor, Design/Builder] shall inform the Owner and Architect, in timely fashion, of any discovered omissions, inconsistencies or errors in the Contract Documents.

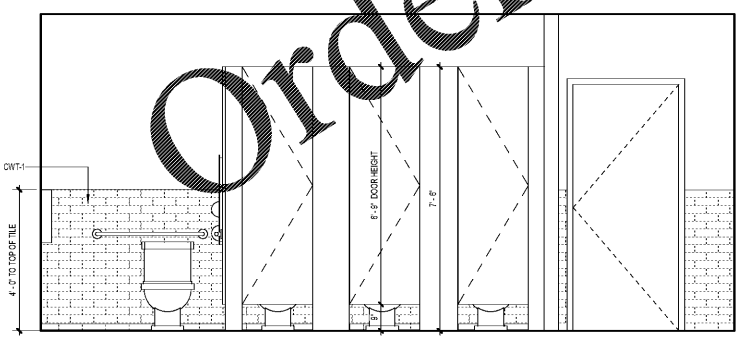
ISSUANCES		
No.	Drawing Issue Description	Date
	INTERIORS PRICING SET	08/13/19



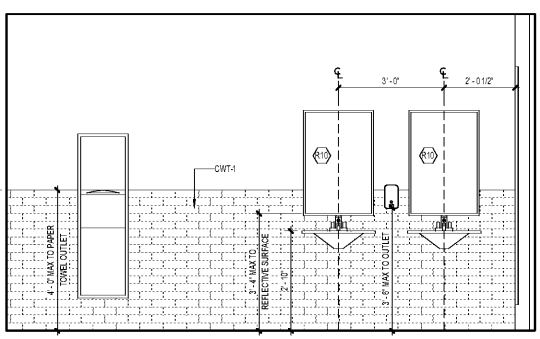
5 ELEVATION - MEN'S RESTROOM
18.02 SCALE: 1/2" = 1'-0"



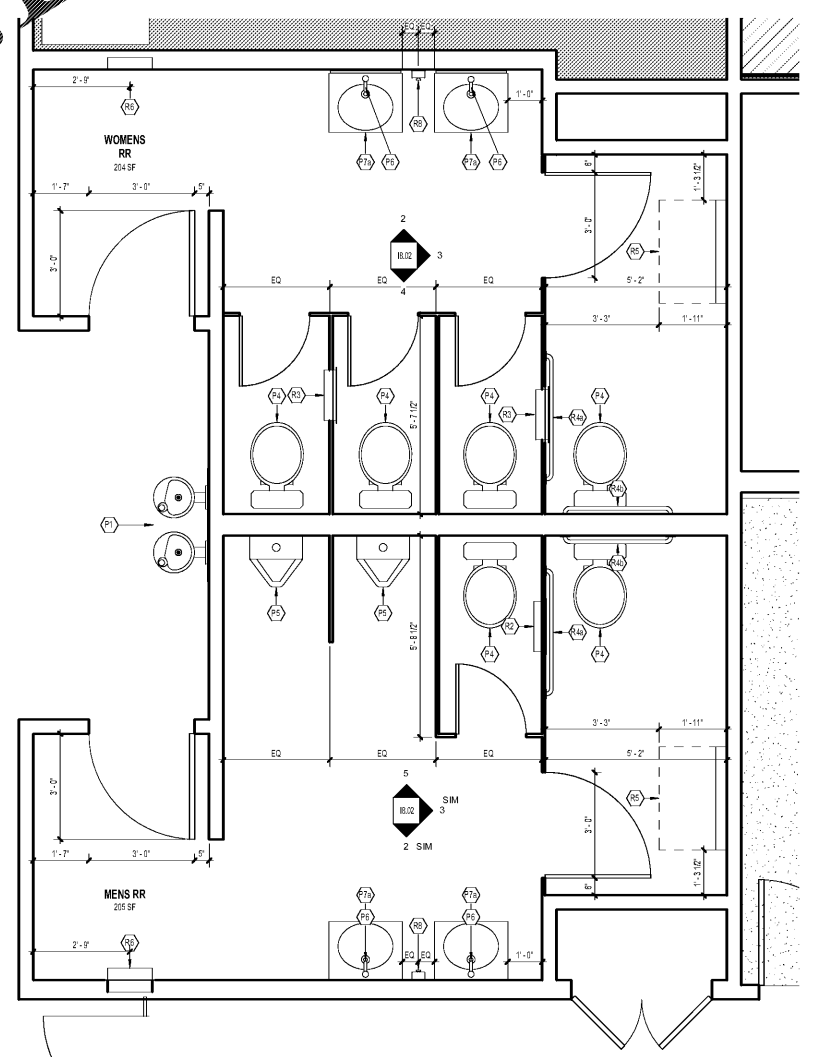
3 TYPICAL RESTROOM ELEVATION
18.02 SCALE: 1/2" = 1'-0"



4 TYPICAL RESTROOM ELEVATION - LAVATORY
18.02 SCALE: 1/2" = 1'-0"



2 TYPICAL RESTROOM ELEVATION - LAVATORY
18.02 SCALE: 1/2" = 1'-0"



1 TYPICAL RESTROOM PARTITION PLAN
18.02 SCALE: 1/2" = 1'-0"

Order Plans @ WWW.LDILine.com

PROJECT NUMBER: 20180316 PROJECT NAME: St Vincent de Paul Georgia Council Headquarters
SHEET NUMBER: 18.02 TYPICAL RESTROOM PARTITION AND ELEVATIONS
M:\2018\20180316\07 Drawings\18.02-7 Revit\Users\20180316_2017_SVDP_07302019_baird022414.rvt
8/14/2019 10:40:12 AM

St Vincent de Paul Georgia
Council Headquarters

2050 Chamblee Tucker Rd
Unit C D & E
Chamblee, GA 30314

St Vincent de Paul Georgia

TYPICAL RESTROOM PLANS AND ELEVATIONS

BRIAN PARKER 20180316
Principal Designer
GHENETH KOVAR 08/13/2019
Project Manager
M.S. & M.B.
Project Architect
WIVIAN MOGWANJA
Staff Architect

18.02