

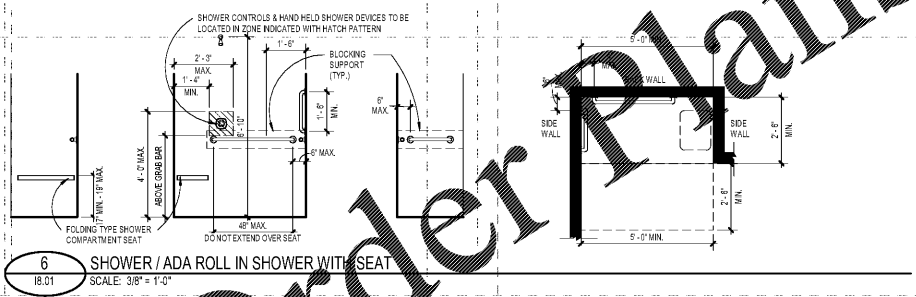


**SCOPE DOCUMENTS**  
The Contract Documents issued for (Conceptual Design, Schematic Design, Design Development, Partial Construction Documents or Other Issuance up to Issued for Construction) are intended to be at that level of completion and as such, may be neither complete nor coordinated. The (Construction Manager, Contractor, Design/Builder) is responsible for complete and coordinated pricing (and execution) of the Work, and shall include items necessary for the proper execution and completion of the Work, as shown, specified, reasonably inferred or required for a complete Project. For Work of designed design, systems, assemblies, components and materials shall comply with national, state and local code requirements. The (Construction Manager, Contractor, Design/Builder) shall inform the Owner and Architect, in timely fashion, of any discovered omissions, inconsistencies or errors in the Contract Documents.

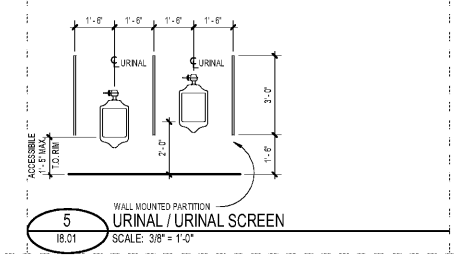
ISSUANCES		
No.	Drawing Issue Description	Date
1	INTERIORS PRICING SET	08/13/19

MARK	DESCRIPTION	MANUFACTURER	MODEL	FINISH	NOTES
R1	Toilet Seat/Cover, Dispenser, Napkin Disposal and Toilet Tissue Dispenser	Boonick	B-5574	Stainless Steel, Satin Finish	Recessed Wall Mounted
R2	Toilet Seat/Cover and Toilet Dispenser	Boonick	B-5471	Stainless Steel, Satin Finish	Toilet Partition Mounted
R3	Seat-Cover Dispenser, Sanitary Napkin Disposal and Toilet Tissue Dispenser	Boonick	B-5571	Stainless Steel, Satin Finish	Toilet Partition Mounted
R4a	Grab Bars with Snap Flange	Boonick	B-6806-42"	Stainless Steel, Satin Finish	Surface Mounted, 1 1/4" Diameter
R4b	Grab Bars with Snap Flange	Boonick	B-6806-36"	Stainless Steel, Satin Finish	Surface Mounted, 1 1/4" Diameter
R5	Changing Station	Boonick	K8201-03	Plastic, Color: Cream	Surface Mounted
R6	Hand Towel Dispenser	Boonick	B-5544	Stainless Steel, Satin Finish	Recessed Wall Mounted
R7	Hand Mirror	Boonick	B-2012438	Stainless Steel	Surface Mounted
R8	Dispenser	Boonick	B-2111	Stainless Steel, Satin Finish	Surface Mounted, Rear facing LED lighting illuminates wall
R9	Mirror	Boonick	Maso Design	Frameless Mirror	Surface Mounted
R10	Hand Soap Dispenser	Boonick	B-6180	Plastic, Matte Ivory	Surface Mounted
R11	Hand Soap Dispenser	Boonick	B-6182	Plastic, Matte Ivory	Surface Mounted
R12	Grab Bars with Snap Flange	Boonick	B-6806-48"	Stainless Steel, Satin Finish	Surface Mounted, 1 1/4" Diameter
R13	Grab Bars with Snap Flange	Boonick	B-6806-24"	Stainless Steel, Satin Finish	Surface Mounted, 1 1/4" Diameter
R17a	Vinyl Shower Curtain	Boonick	B-2543	White	Provide with R70 Boonick Stainless Steel Curtain Hook, Model 2041
R18	Shower Curtain Rod	Boonick	B-2543-80	Stainless Steel, Satin Finish	Surface Mounted

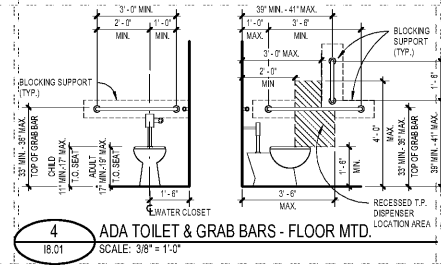
MARK	DESCRIPTION	MANUFACTURER	MODEL	NOTES / COMMENTS:
P1	Water Cooler	Ekoy	ERPM20K	H-Lo water fountain
P4	Water Closet	Slone	WETS-8025-B110	Floor Mounted
P5	Urinal	Slone	UP-9-1000	Wall Mounted
P6	Lavatory Faucet	Slone	SLF-200	Recessed, sensor-activated, 8 1/2" Lithium battery included
P7a	Lavatory	Kohler	K-1907-R	Provide with P7b Ceramic Pop Shower-K-1908
P8a	Double Basin Sink	Slone	30" Lx 21" W, Provide w/ P8b Faucet-KR22643-80	
P9	Wp Sink			



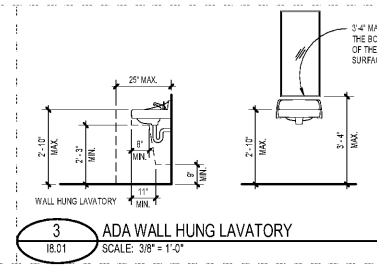
**6 SHOWER / ADA ROLL IN SHOWER WITH SEAT**  
18.01 SCALE: 3/8" = 1'-0"



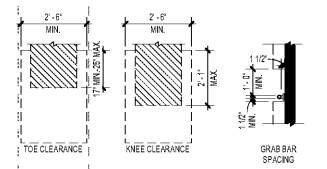
**5 WALL MOUNTED PARTITION URINAL / URINAL SCREEN**  
18.01 SCALE: 3/8" = 1'-0"



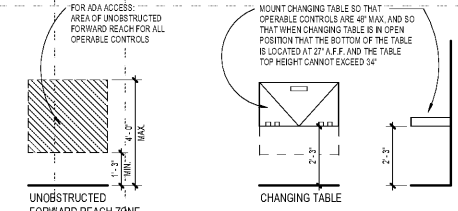
**4 ADA TOILET & GRAB BARS - FLOOR MTD.**  
18.01 SCALE: 3/8" = 1'-0"



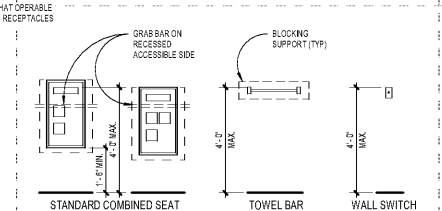
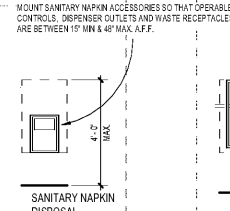
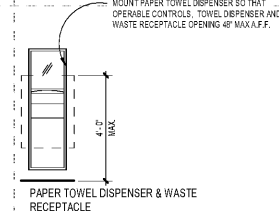
**3 ADA WALL HUNG LAVATORY**  
18.01 SCALE: 3/8" = 1'-0"



**2 CLEARANCES**  
18.01 SCALE: 3/8" = 1'-0"



**1 MOUNTING HEIGHTS**  
18.01 SCALE: 3/8" = 1'-0"



**STANDARD COMBINED SEAT COVER & TOILET TISSUE DISPENSERS**

Order Plans @ WWW.IDIline.com

PROJECT NUMBER: 20180316 PROJ: ST VINCENT DE PAUL COUNCIL HEADQUARTERS  
SHEET NUMBER: 18.01 PLUMBING STANDARDS & FIXTURE SCHEDULES  
M:\2018\20180316\7-Drawings\18.01-7-1 Revit\Users\20180316\_2017\_SVOP\_07302019\_baird022414.rvt  
8/14/2019 10:40:11 AM

**St Vincent de Paul Georgia Council Headquarters**  
2050 Chamblee Tucker Rd  
Unit C D & E  
Chamblee, GA 30314  
St Vincent de Paul Georgia

**PLUMBING STANDARDS & FIXTURE SCHEDULES**

BRIAN PARKER 20180316  
Principal Designer  
GIVENETH KOVAR 08/13/2019  
Project Manager  
M.S. & M.B. Date  
Project Architect  
WIVAN MOGWANJA  
Staff Architect

18.01