

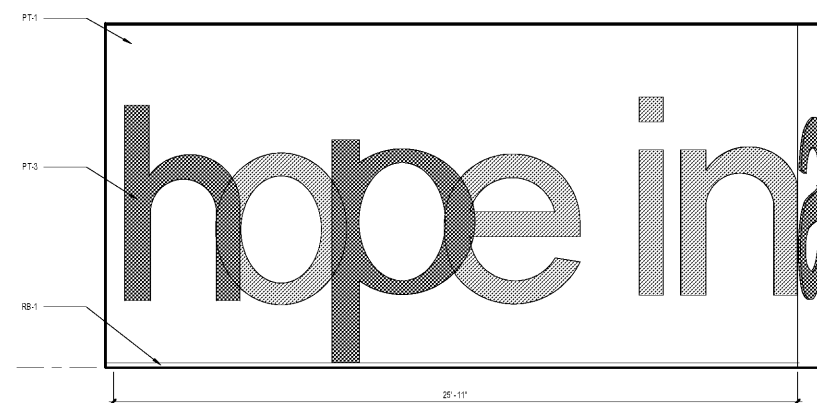


SCOPE DOCUMENTS

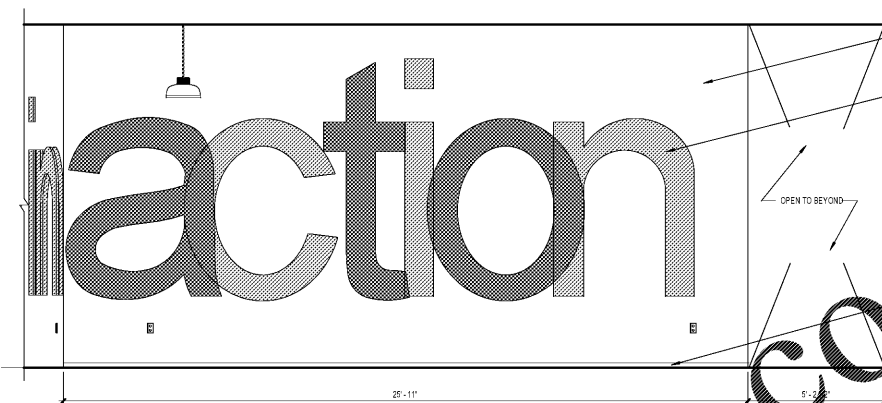
The Contract Documents issued for (Conceptual Design, Schematic Design, Design Development, Partial Construction Documents or Other Issuance up to Issued for Construction) are intended to be at that level of completion and as such, may be neither complete nor coordinated. The (Construction Manager, Contractor, Design/Builder) is responsible for complete and coordinated pricing (and execution) of the Work, and shall include items necessary for the proper execution and completion of the Work, as shown, specified, reasonably inferred or required for a complete Project. For Work of designed designs, systems, assemblies, components and materials shall comply with national, state and local code requirements. The (Construction Manager, Contractor, Design/Builder) shall inform the Owner and Architect, in timely fashion, of any discovered omissions, inconsistencies or errors in the Contract Documents.

ISSUANCES

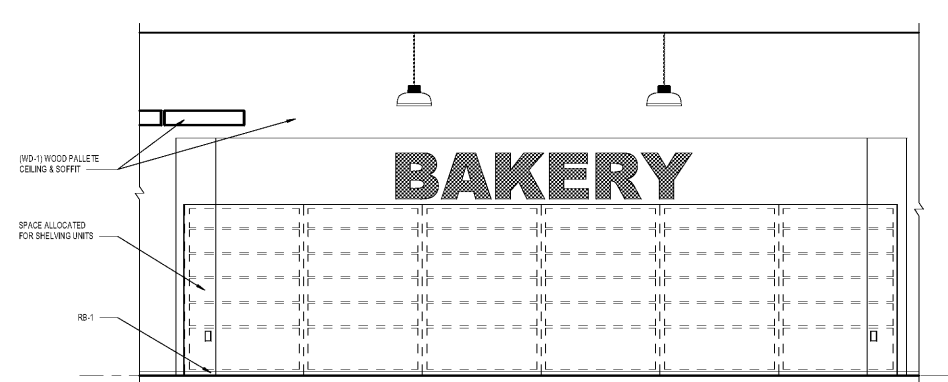
No.	Drawing Issue Description	Date
1	INTERIORS PRICING SET	08/13/19



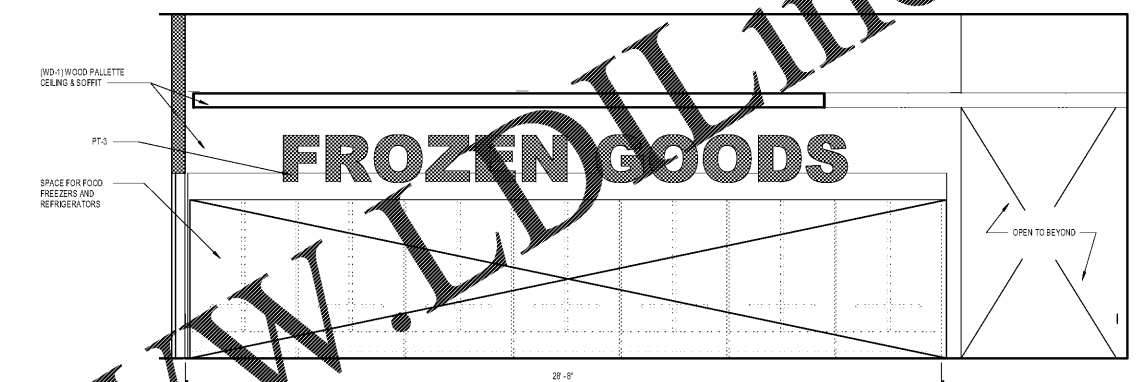
5 FOOD PANTRY - ENTRY WALL ELEVATION
SCALE: 3/8" = 1'-0"



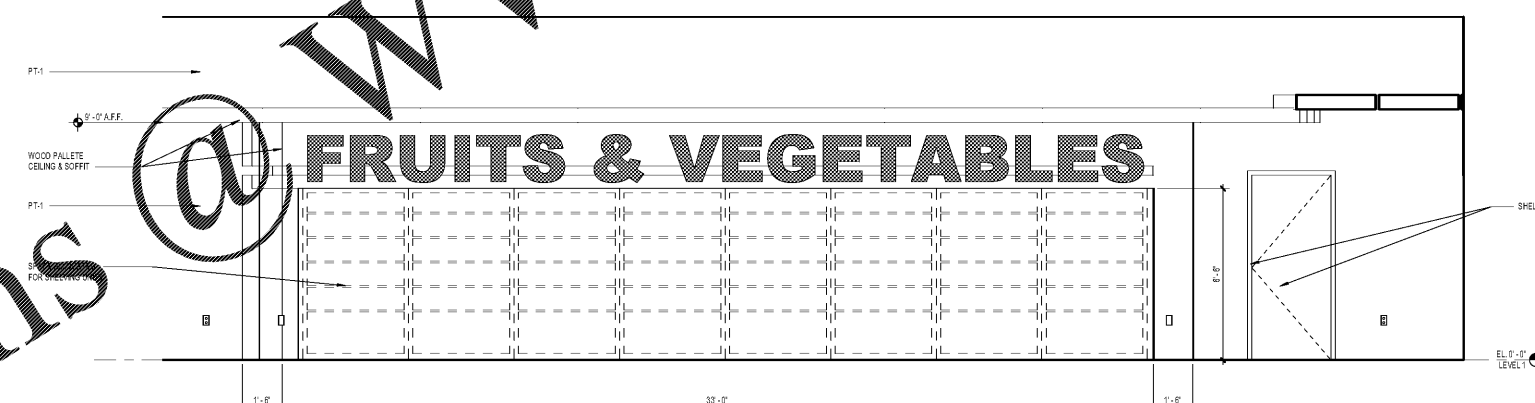
4 FOOD PANTRY - OUTDOOR ENTRANCE WALL ELEVATION
SCALE: 3/8" = 1'-0"



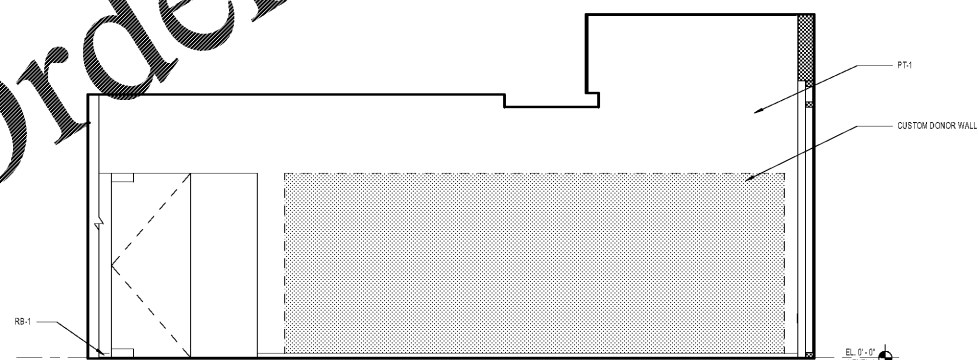
3 FOOD PANTRY - BAKERY WALL ELEVATION
SCALE: 3/8" = 1'-0"



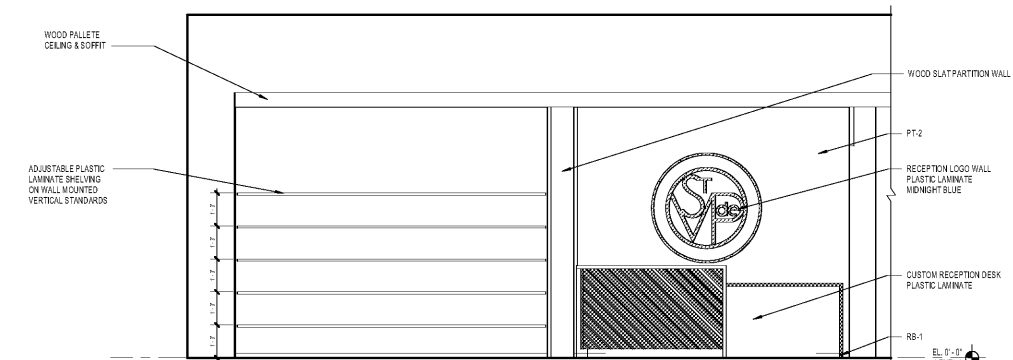
2 FOOD PANTRY - FROZEN GOODS WALL ELEVATION
SCALE: 3/8" = 1'-0"



1 FOOD PANTRY - FRUITS AND VEGETABLES WALL ELEVATION
SCALE: 3/8" = 1'-0"



6 RECEPTION - DONOR WALL
SCALE: 3/8" = 1'-0"



7 RECEPTION WALL ELEVATION
SCALE: 3/8" = 1'-0"

Order Plans @ WWW.LDOnline.com

PROJECT NUMBER: 20180316 PROJ: ST VINCENT DE PAUL GEORGIA COUNCIL HEADQUARTERS
SHEET NUMBER: 12.10 INTERIORS ELEVATIONS
M:\2018\20180316\7 Drawings\12.10_2017_SVDP_07302019_baird02244.rvt
8/14/2019 10:40:05 AM

St Vincent de Paul Georgia
Council Headquarters

2050 Chamblee Tucker Rd
Unit C D & E
Chamblee, GA 30314

St Vincent de Paul Georgia

INTERIOR ELEVATIONS

BRIAN PARKER	20180316
Principal Designer	Project No.
GHENETH KOVAR	08/13/2019
Project Manager	Date
M.S. & M.B.	
Project Architect	
WIVIAN MOGWANJA	
Staff Architect	

12.10