



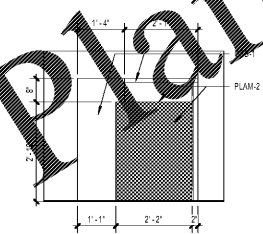
SCOPE DOCUMENTS

The Contract Documents issued for [Conceptual Design, Schematic Design, Design Development, Partial Construction Documents or Other Issuance up to Issued for Construction] are intended to be at that level of completion and as such, may be neither complete nor coordinated. The [Construction Manager, Contractor, Design/Builder] is responsible for complete and coordinated pricing [and execution] of the Work, and shall include items necessary for the proper execution and completion of the Work, as shown, specified, reasonably inferred or required for a complete Project. For Work of designed design, systems, assemblies, components and materials shall comply with national, state and local code requirements. The [Construction Manager, Contractor, Design/Builder] shall inform the Owner and Architect, in timely fashion, of any discovered omissions, inconsistencies or errors in the Contract Documents.

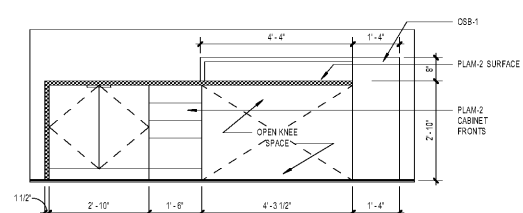
ISSUANCES

No.	Drawing Issue Description	Date
	INTERIORS PRICING SET	08/13/19

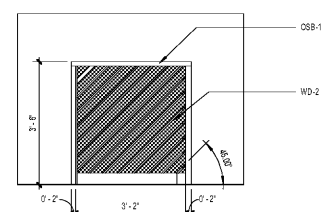
Order Plans @ www.LDILine.com



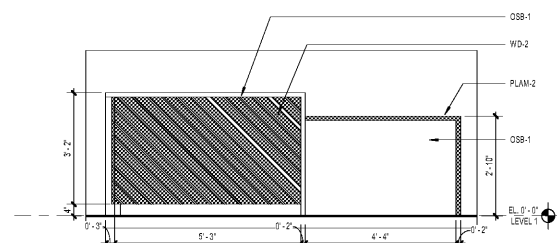
5 ELEVATION @ RECEPTION DESK
SCALE: 1/2" = 1'-0"



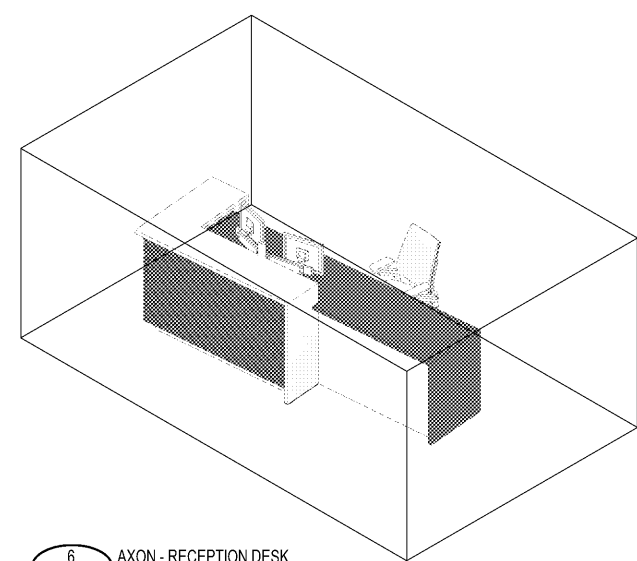
4 ELEVATION @ RECEPTION DESK
SCALE: 1/2" = 1'-0"



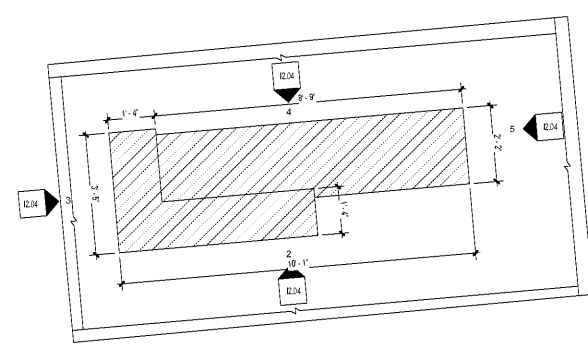
3 ELEVATION @ RECEPTION DESK
SCALE: 1/2" = 1'-0"



2 ELEVATION @ RECEPTION DESK
SCALE: 1/2" = 1'-0"



6 AXON - RECEPTION DESK
SCALE:



1 ENLARGED PLAN - RECEPTION DESK
SCALE: 1/2" = 1'-0"

PROJECT NUMBER: 20180316 PROJECT NAME: St Vincent de Paul Georgia Council Headquarters
SHEET NUMBER: 044 - ENLARGED PLANS AND AXONOMETRIC VIEWS - RECEPTION DESK
M:\2018\20180316\044-7 Drawings\044-7-1 Revit\Users\j0180316_2017_SVOP_07302019_baird02244.rvt
8/14/2019 10:40:00 AM

St Vincent de Paul Georgia
Council Headquarters

2050 Chamblee Tucker Rd
Unit C D & E
Chamblee, GA 30314

St Vincent de Paul Georgia

ENLARGED PLANS AND
AXONOMETRIC VIEWS -
RECEPTION DESK

BRIAN PARKER 20180316
Principal Designer
GHENEETH KOVAR 07/22/13
Project Manager
M.S. & M.B. Date
Project Architect
WIVIAN MOGWANJA
SAP Architect

12.04